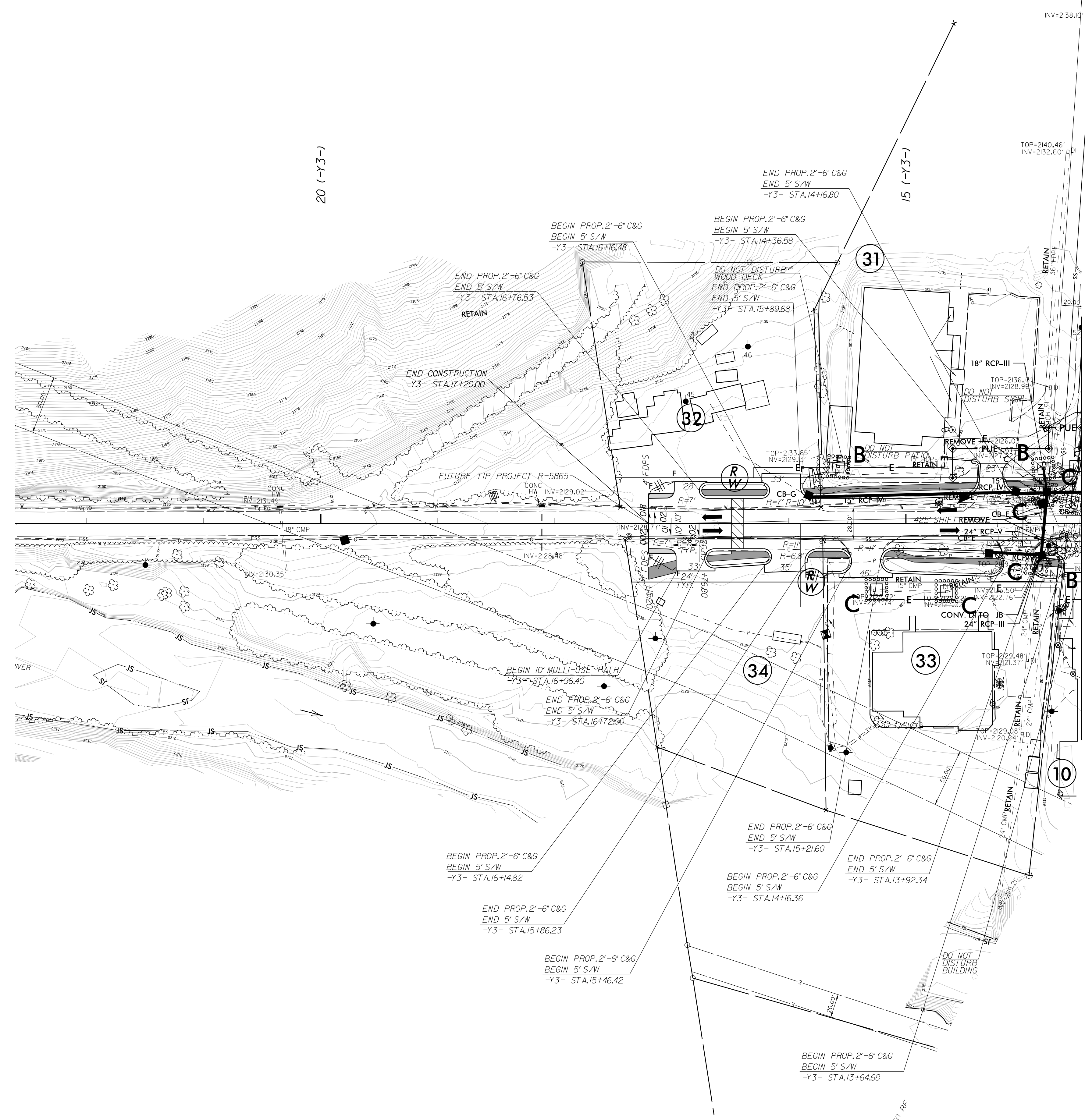


NAD 83/NA 2011



MATCH LINE -Y3- STA 13 + 50 SHEET 5

**CLEARING AND GRUBBING
EROSION CONTROL FOR
CONSTRUCTION SHEET 8**

NOTE: EXCELSIOR OR OTHER MESH TYPE NETTING IS NOT ALLOWED IN OR ON STREAM BANKS.

NOTE: UTILIZE FABRIC INSERT INLET PROTECTION DEVICES IN LIEU OF ROCK INLET SEDIMENT TRAPS, TYPE-C AS DIRECTED TO AVOID IMPOUNDMENT OF RUNOFF IN ROADWAY OPEN TO TRAFFIC.

NOTE: PLACE TEMPORARY ROCK SEDIMENT DAMS TYPE - B AND TEMPORARY ROCK SILT CHECKS TYPE - A AT DRAINAGE OUTLETS.

NOTES: ANY DEVIATION FROM OPTIONS GIVEN WILL REQUIRE PRIOR APPROVAL BY ENGINEER.

ADDITIONAL EROSION CONTROL DEVICES MAY NEED TO BE INSTALLED AS DIRECTED BY THE ENGINEER.

8/17/99
R-5799-2003.10.06
P:\Projects\Design\Plan_Sheets\R-5799_EC_C&G_EC-11.dgn
PLT: JSM