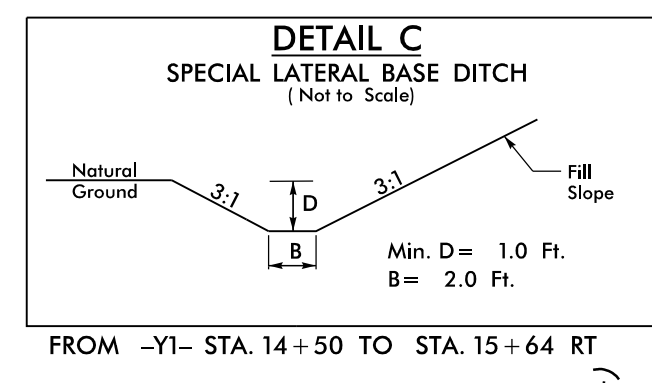
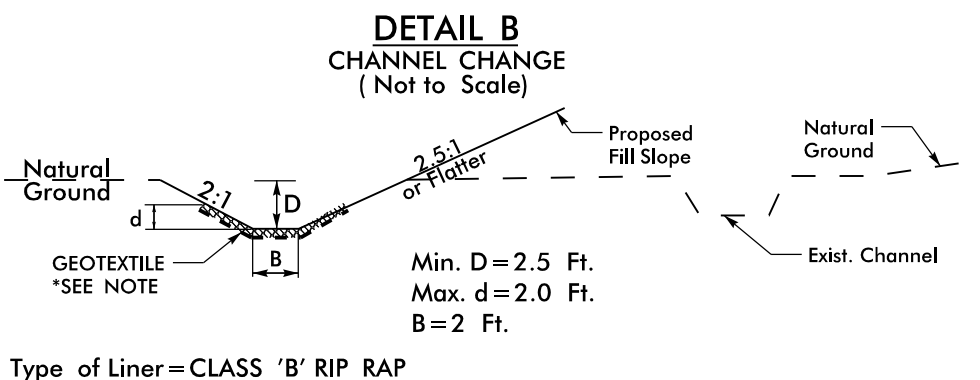
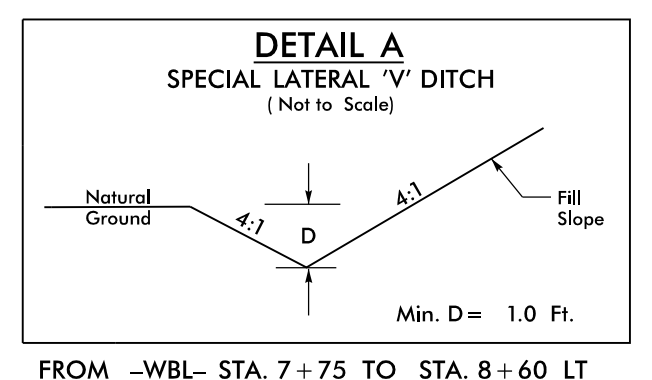


PROJECT REFERENCE NO. <b>R-5799</b>	SHEET NO. <b>4</b>
ROADWAY DESIGN ENGINEER <b>ELSON C. DRAKE</b> PROFESSIONAL SEAL NO. 118540423074 EXPIRES 12/31/2023	HYDRAULICS ENGINEER <b>ALEXANDER R. JINION</b> PROFESSIONAL SEAL NO. 118540423074 EXPIRES 12/31/2023
7/12/2023	7/12/2023

**DOCUMENT NOT CONSIDERED FINAL  
UNLESS ALL SIGNATURES COMPLETED**

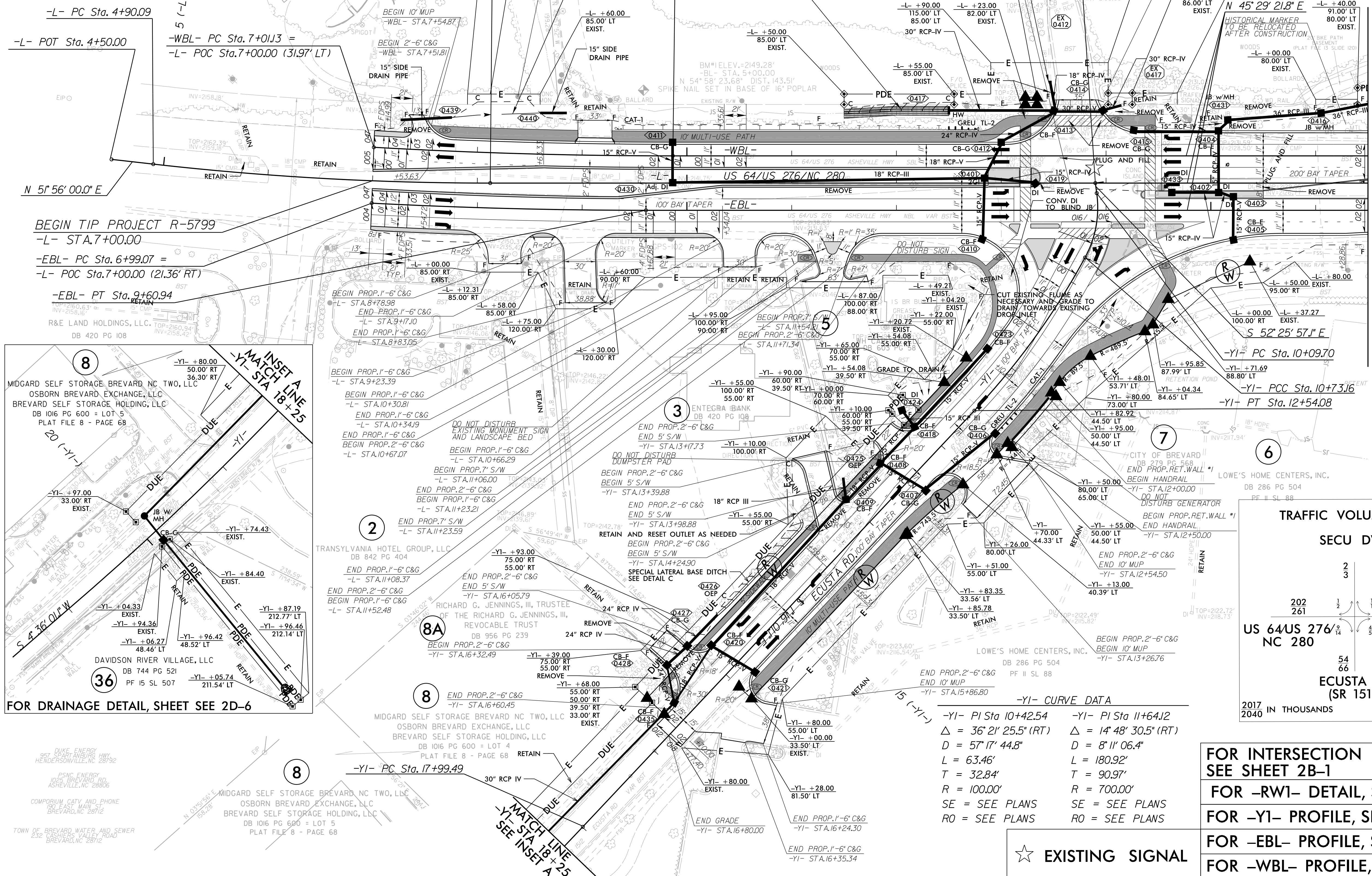


MATCH LINE -L- STA 16 + 50 SHEET 5



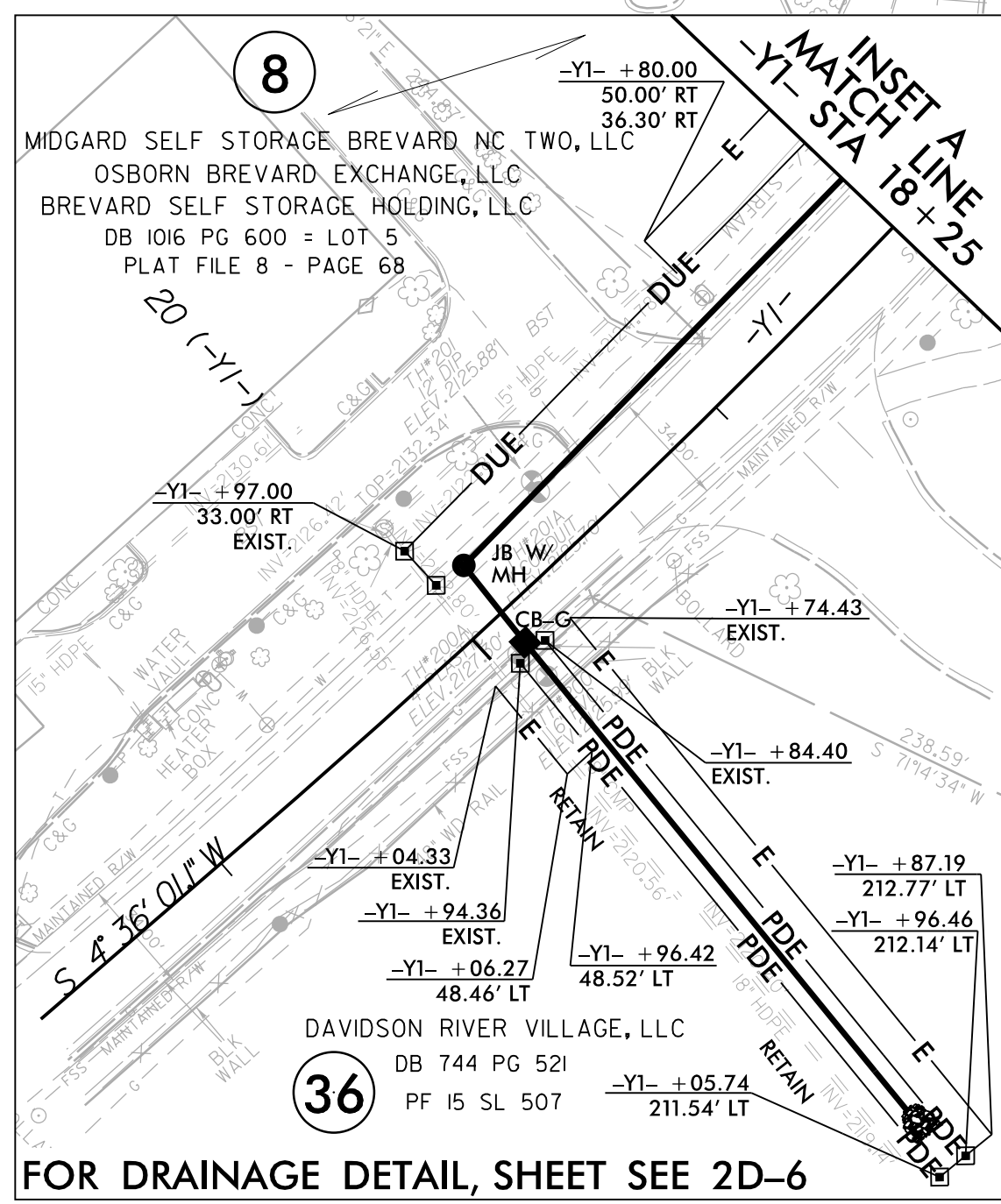
**\*DESIGN NOTE:**  
DURING CONSTRUCTION OF THE CHANNEL CHANGE, REMOVE GEOTEXTILE FABRIC AS NECESSARY TO EMBED THE RIP RAP IN THE STREAM BED.

-L- CURVE DATA	-EBL- CURVE DATA	-WBL- CURVE DATA
-L- PI Sta 6+51.37	-EBL- PI Sta 8+30.04	-WBL- PI Sta 8+43.89
$\Delta = 6^{\circ} 26' 38.2''$ (LT)	$\Delta = 3^{\circ} 00' 02.8''$ (LT)	$\Delta = 3^{\circ} 16' 15.9''$ (LT)
$D = 1^{\circ} 59' 59.5''$	$D = 1^{\circ} 08' 45.3''$	$D = 1^{\circ} 08' 45.3''$
$L = 322.22'$	$L = 261.87'$	$L = 285.46'$
$T = 161.28'$	$T = 130.96'$	$T = 142.77'$
$R = 2,865.00'$	$R = 5,000.00'$	$R = 5,000.00'$
	$SE = 02$	$SE = 02$
	$RO = 42'$	$RO = 42'$



**BEGIN TIP PROJECT R-5799**  
-L- STA. 7+00.00  
-EBL- PC Sta. 6+99.07 =  
-L- POC Sta. 7+00.00 (21.36' RT)

-EBL- PT Sta. 9+60.94



**TRAFFIC VOLUME DATA**  
SECU DWY

202	261	238	298
54	66		

ECUSTA RD (SR 1512)  
2017 IN THOUSANDS  
2040

**FOR INTERSECTION DETAIL, SEE SHEET 2B-1**  
**FOR -RWI- DETAIL, SEE SHEET W-1**  
**FOR -YI- PROFILE, SEE SHEET NO. 12**  
**FOR -EBL- PROFILE, SEE SHEET NO. 9**  
**FOR -WBL- PROFILE, SEE SHEET NO. 9**

☆ EXISTING SIGNAL

8.17.799  
8.17.2023 14:37 R5799\_Rdy\_psh\_04.dgn  
PSNC ENERGY 1025 BREVARD RD ASHEVILLE, NC 28806  
COMPTON CATV AND PHONE 232 CASHIERS VALLEY ROAD BREVARD, NC 28712  
TOWN OF BREVARD WATER AND SEWER 232 CASHIERS VALLEY ROAD BREVARD, NC 28712