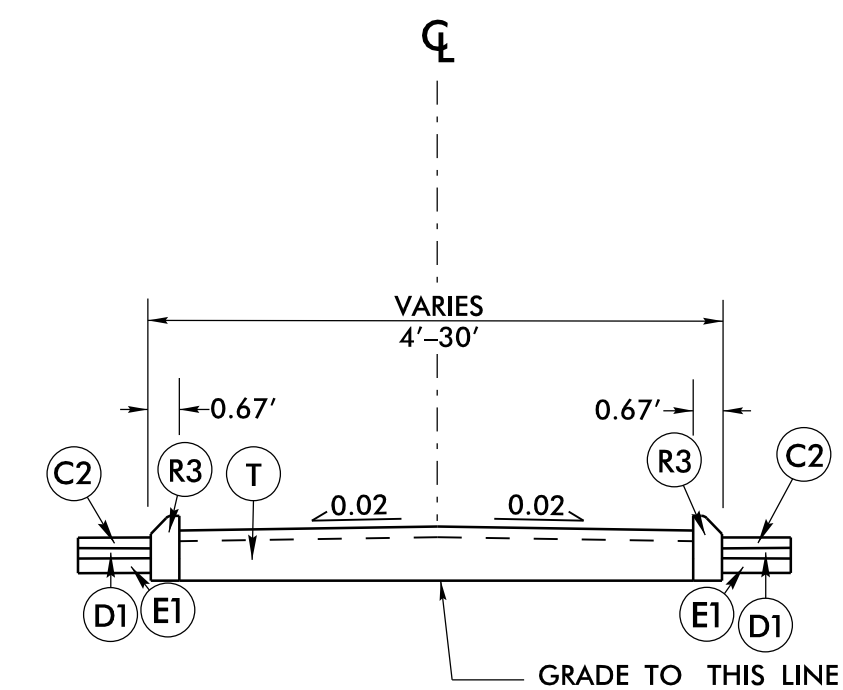
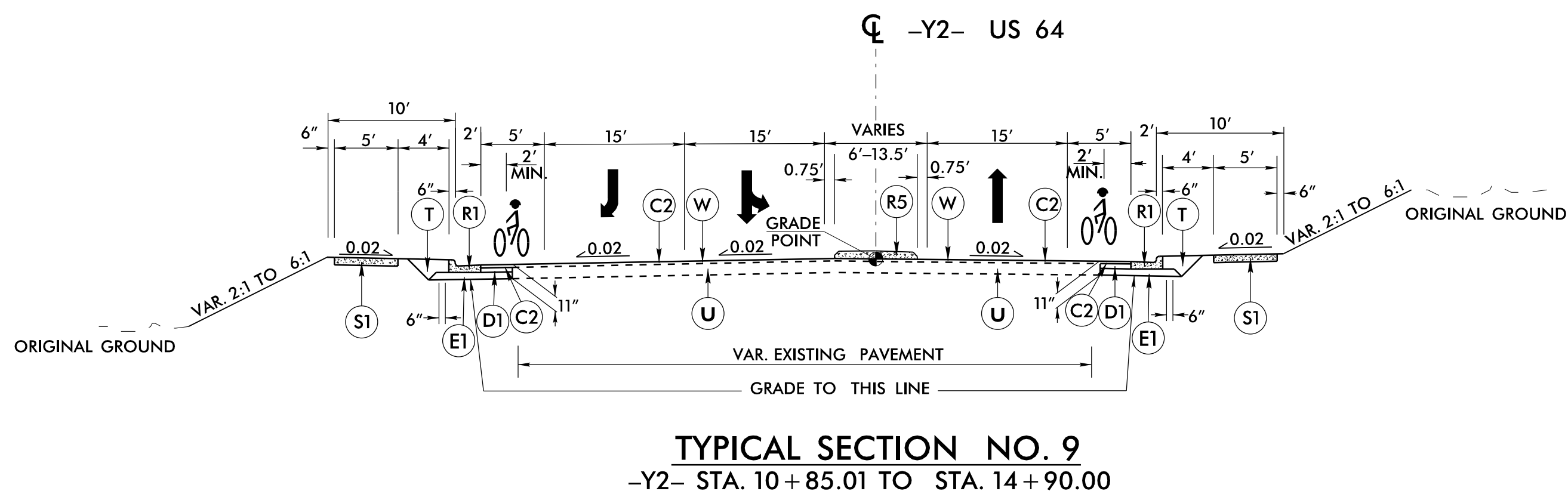
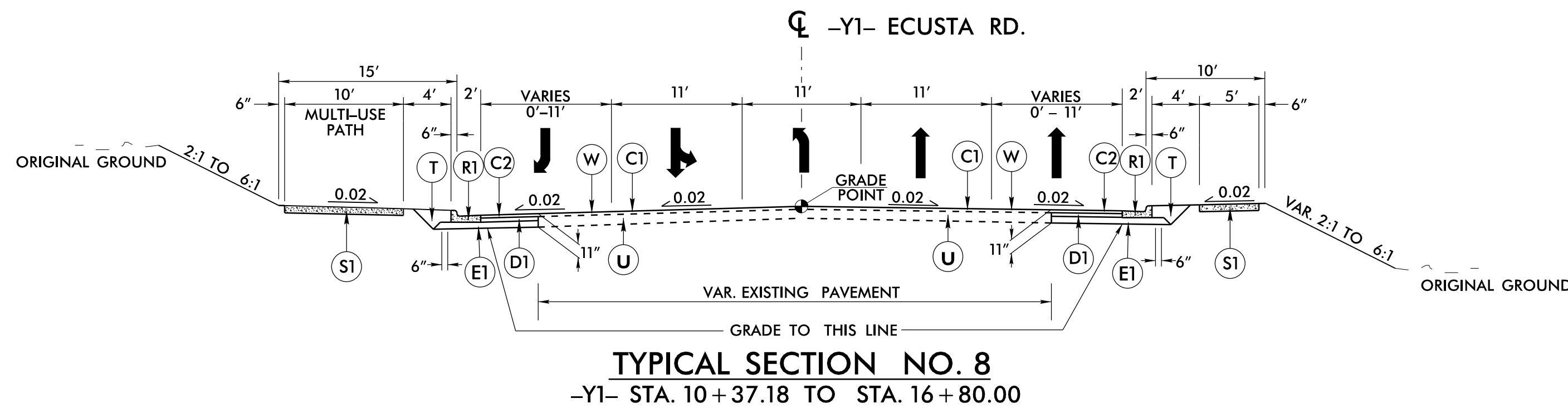
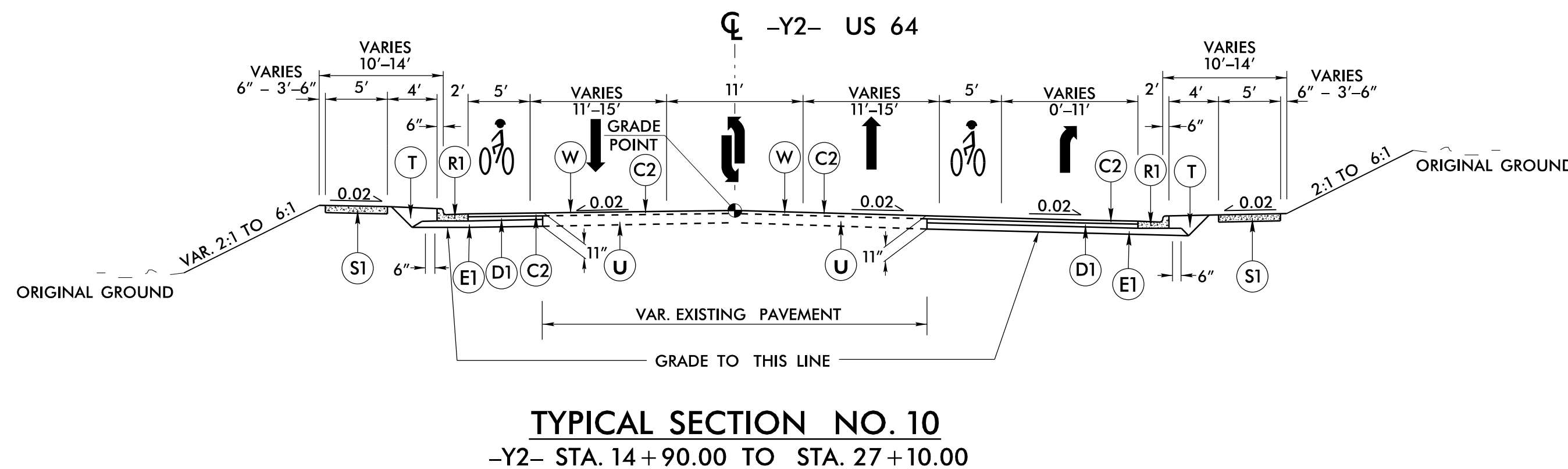


FINAL PAVEMENT SCHEDULE	
C1	1.5" S9.5B
C2	3" S9.5B
D1	4" I19.0C
E1	4" B25.0C
R1	2'-6" C&G
R3	8"X18" CURB
R5	5" ISLAND
S1	4" SIDEWALK
T	EARTH MATERIAL
U	EXIST. PAVEMENT
W	WEDGING

NOTE: PAVEMENT EDGES ARE 1:1 UNLESS SHOWN OTHERWISE



- L- STA. 22+17.62 TO STA. 22+46.93
- L- STA. 23+86.65 TO STA. 24+16.30
- L- STA. 27+71.19 TO STA. 27+91.25
- L- STA. 29+31.69 TO STA. 29+58.25
- Y2- STA. 10+86.28 TO STA. 11+44.08
- Y3- STA. 10+86.56 TO STA. 11+50.25
- Y4- STA. 10+86.27 TO STA. 11+11.33



PROJECT REFERENCE NO. <i>R-5799</i>	SHEET NO. <i>2A-5</i>
ROADWAY DESIGN ENGINEER <i>(Signature)</i>	PAVEMENT DESIGN ENGINEER <i>(Signature)</i>
7/12/2023	7/13/2023

DOCUMENT NOT CONSIDERED FINAL UNLESS ALL SIGNATURES COMPLETED

