

### DECK UNDERSIDE REPAIR QUANTITY TABLE

SPAN B	QUANTITIES			
	ESTIMATE		ACTUAL	
SHOTCRETE REPAIRS	AREA SF	VOLUME CF	AREA SF	VOLUME CF
UNDERSIDE OF DECK	0	0		
CONCRETE DIAPHRAGM	0	0		
OVERHANG	0	0		
CONCRETE GIRDER	0	0		
<b>CONCRETE REPAIRS</b>	<b>AREA SF</b>	<b>VOLUME CF</b>	<b>AREA SF</b>	<b>VOLUME CF</b>
UNDERSIDE OF DECK	0	0		
CONCRETE DIAPHRAGM	0	0		
OVERHANG	0	0		
CONCRETE GIRDER	0	0		
<b>EPOXY COATING</b>		<b>AREA SF</b>		<b>AREA SF</b>
GIRDER ENDS		416		

VALUES IN CHART REPRESENT ESTIMATED REPAIR TOTALS AFTER REMOVAL OF UNSOUND CONCRETE, MIN. OF 1" BEHIND REBAR AND MIN. 2" CLEAR TO SAWCUT. SEE REPAIR DETAILS.



#### NOTES

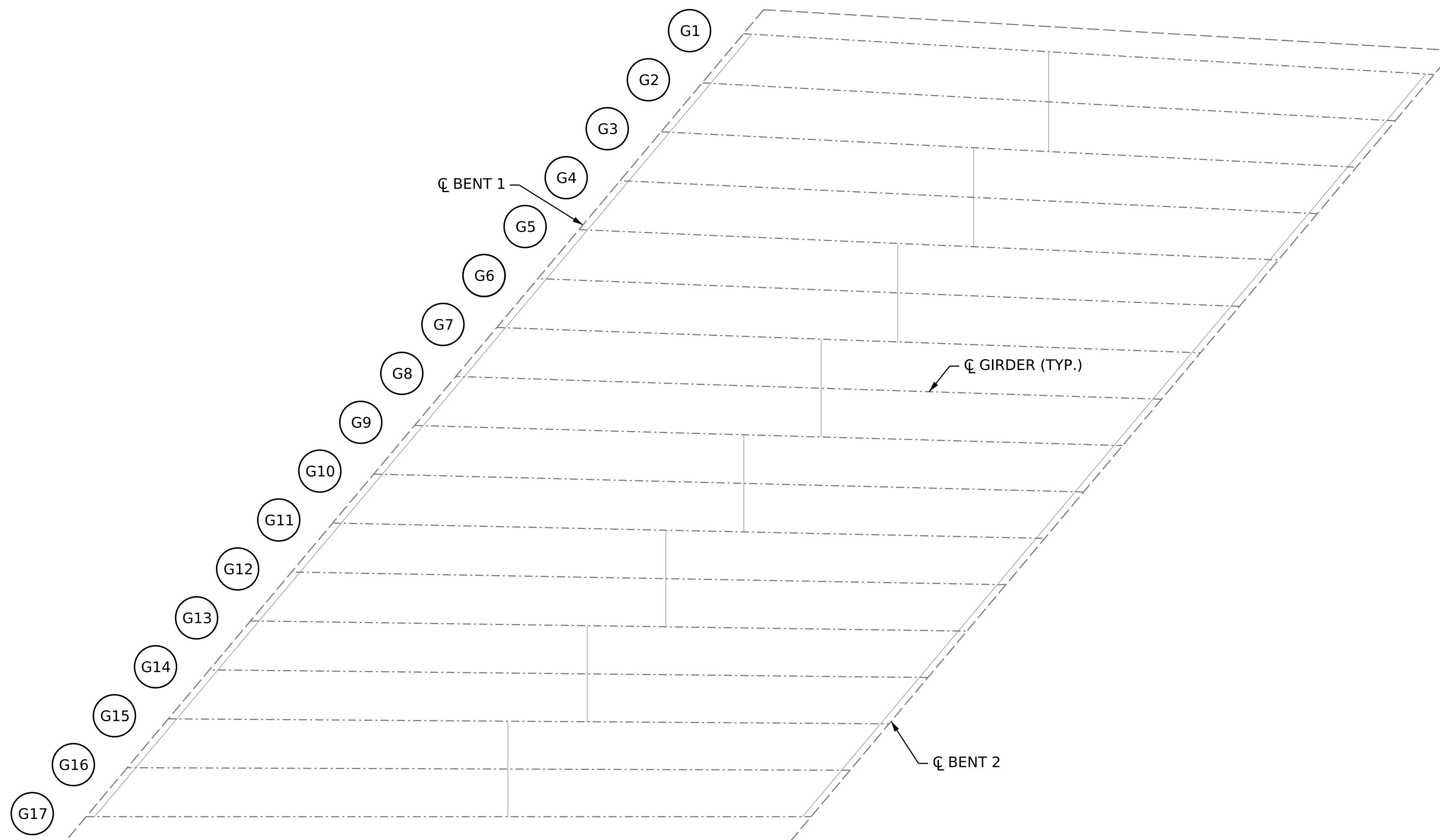
REPAIR LOCATIONS AND ESTIMATE OF QUANTITIES ARE GIVEN BASED ON THE BEST INFORMATION AVAILABLE. IF ADDITIONAL REPAIRS NOT SHOWN ON THE DRAWINGS ARE DEEMED NECESSARY BY THE ENGINEER, THE ENGINEER SHALL NOTE ON THE DRAWINGS THE APPROXIMATE LOCATION AND DESCRIPTION OF THE REPAIRS AND ENTER THE ACTUAL QUANTITIES INTO THE REPAIR QUANTITY TABLE.

CONCRETE REPAIRS MAYBE SUBSTITUTED IN LIEU OF SHOTCRETE REPAIRS WITH THE APPROVAL OF THE ENGINEER.

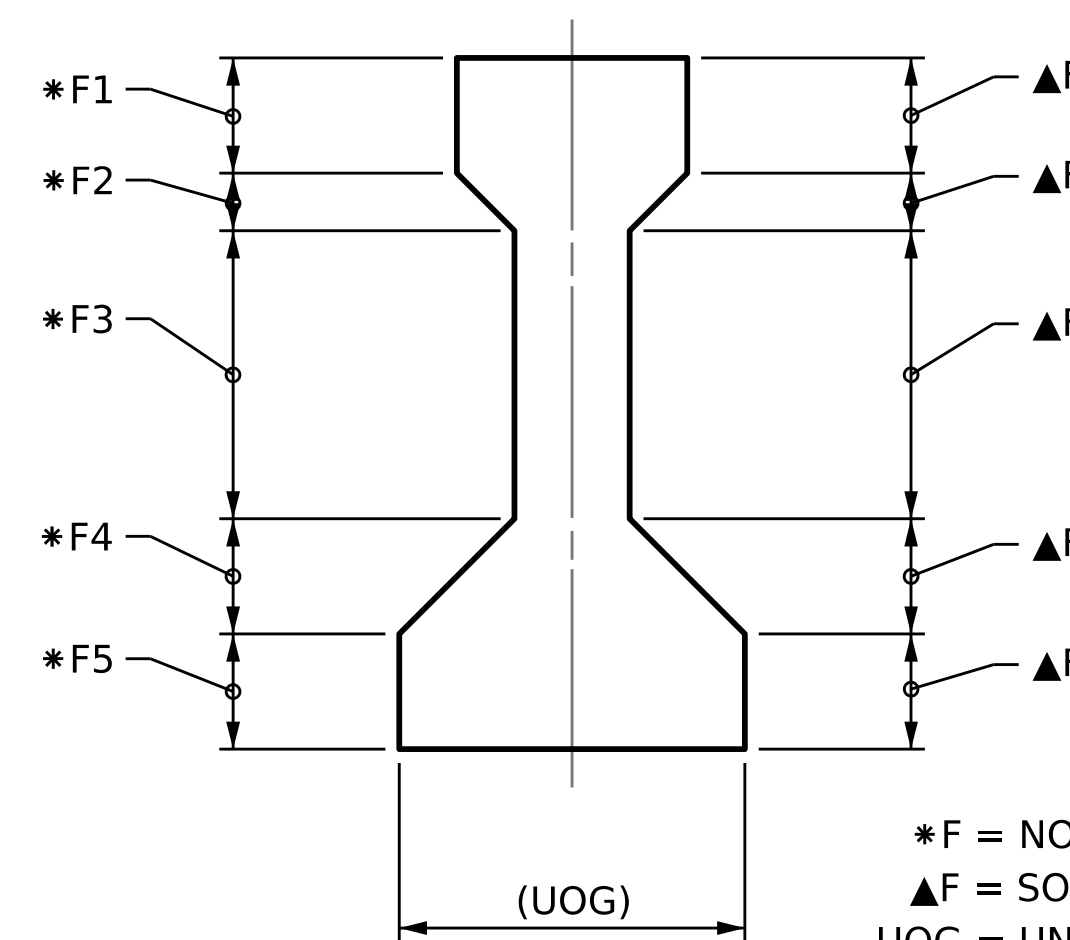
EPOXY COAT THE ENDS OF ALL CONCRETE GIRDERS.

FOR PRESTRESSED CONCRETE GIRDER REPAIR DETAILS AND LIMITS OF EPOXY COATING CONCRETE GIRDER ENDS, SEE PRESTRESSED CONCRETE GIRDER REPAIRS DETAIL SHEET.

-  SHOTCRETE REPAIR AREA
-  CONCRETE REPAIR AREA



PLAN

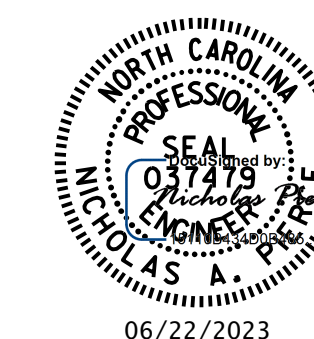


\* F = NORTH/WEST FACE  
 ▲ F = SOUTH/EAST FACE  
 UOG = UNDERSIDE OF GIRDER

GIRDER SECTION

GIRDER DAMAGE LOCATIONS

PROJECT NO. **15BPR.124.3**  
**WAKE** COUNTY  
 BRIDGE NO. **911084**



STATE OF NORTH CAROLINA  
 DEPARTMENT OF TRANSPORTATION  
 RALEIGH  
 DECK UNDERSIDE REPAIR  
**SPAN B**

REVISIONS						SHEET NO.
NO.	BY:	DATE:	NO.	BY:	DATE:	S4-09
1			3			TOTAL SHEETS
2			4			21

DOCUMENT NOT CONSIDERED FINAL UNLESS ALL SIGNATURES COMPLETED

DRAWN BY : D.A. CANTRELL DATE : 03/2021  
 CHECKED BY : N.A. PIERCE DATE : 10/2022  
 DESIGN ENGINEER OF RECORD: N.A. PIERCE DATE : 12/2022