

**SECTION A-A**  
(TYP. AT END BENTS)

| JOINT REPAIR QUANTITY TABLE       |               |        |
|-----------------------------------|---------------|--------|
|                                   | ESTIMATED     | ACTUAL |
| FOAM JOINT SEALS FOR PRESERVATION | 325.0 LN. FT. |        |

| LOCATION   | SAWED JT. OPENING (PERPENDICULAR TO JT.) |        |        |
|------------|--|--------|--------|
|            | AT 45°                                   | AT 60° | AT 90° |
| END BENT 1 | 2 1/2"                                   | 2 3/4" | 1 7/8" |
| END BENT 2 | 2 1/2"                                   | 2 3/4" | 1 7/8" |

| ELASTOMERIC CONCRETE FOR PRESERVATION |                     |                  |
|---------------------------------------|---------------------|------------------|
| LOCATION                              | ESTIMATED (CU.F.T.) | ACTUAL (CU.F.T.) |
| END BENT 1                            | 42.8                |                  |
| END BENT 2                            | 38.6                |                  |
| TOTAL                                 | 81.4                |                  |

**NOTES**

FINAL JOINT SEALS SHALL NOT BE INSTALLED UNTIL THE OVERLAY OR SEALANT WORK IS COMPLETE.

THE CONTRACTOR SHALL FIELD VERIFY THE EXISTING JOINT OPENING PRIOR TO ORDERING JOINT SEAL MATERIAL. IF THE ACTUAL JOINT OPENING VARIES FROM THE OPENING INDICATED IN THE DETAILS BY MORE THAN 1/4", NOTIFY THE ENGINEER.

THE MANUFACTURER IS TO PROVIDE THE NOMINAL UNCOMPRESSED SEAL WIDTH OF THE FOAM JOINT SEAL FOR THE SIZE OF THE OPENING ON THE PLANS AND ACCOMMODATE THE MINIMUM EXPANSION SHOWN ON THE PLANS.

FOAM JOINTS SHALL BE INSTALLED AS PER THE MANUFACTURER'S RECOMMENDATIONS.

THE CONTRACTOR SHALL TAKE CARE DURING JOINT REHAB OPERATIONS NOT TO DROP ANY MATERIAL BELOW THE BRIDGE, WITHOUT PROTECTIVE DEVICES BELOW TO CATCH THE MATERIAL. ANY MATERIAL THAT FALLS BELOW THE BRIDGE SHALL BE CONTAINED, REMOVED AND DISPOSED OF BY THE CONTRACTOR AT NO EXTRA COST TO THE DEPARTMENT. IF THE ENGINEER DETERMINES THAT THE PROTECTIVE DEVICES ARE NOT ADEQUATE OR NOT BEING EMPLOYED, THE WORK SHALL BE SUSPENDED UNTIL ADEQUATE PROTECTION IS PROVIDED.

THE CONTRACTOR WILL NOT BE PERMITTED TO FORM THE JOINTS IN LIEU OF SAWING THE JOINT.

THE INSTALLED FOAM JOINTS SHALL BE WATER TIGHT.

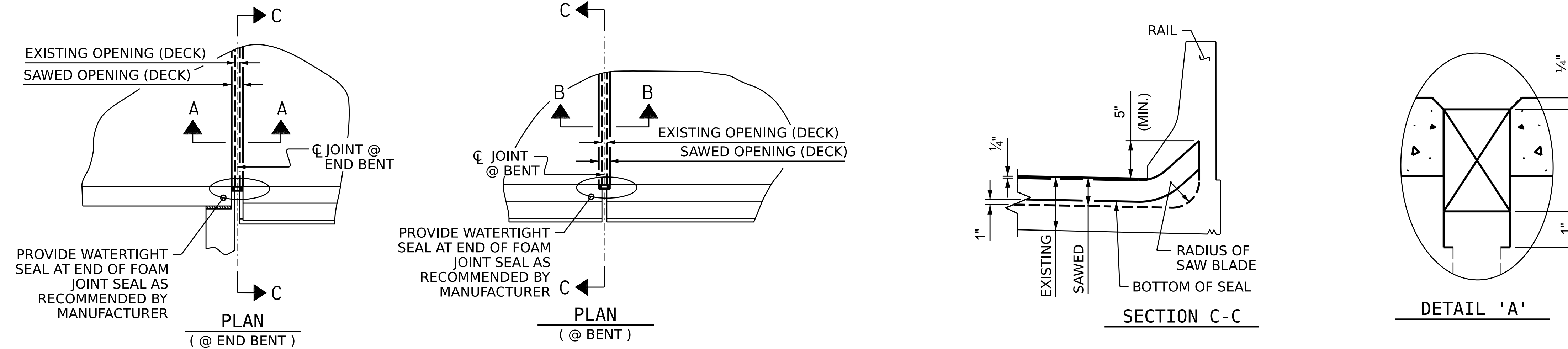
THE CONTRACTOR SHALL SAW CUT TO A NOMINAL DEPTH OF 1/2" BUT REINFORCING STEEL SHALL NOT BE DAMAGED. CONTRACTOR SHALL REMOVE SURFACE CONCRETE TO VERIFY THAT SAWCUT DEPTH WILL NOT DAMAGE EXISTING REINFORCING STEEL.

QUANTITIES SHOWN IN THE ELASTOMERIC CONCRETE FOR PRESERVATION TABLE ARE BASED ON THE MINIMUM JOINT DEMOLITION SHOWN.

FOR EXCAVATION BELOW THE BOTTOM OF PLANNED JOINT DEMOLITION, CONCRETE FOR DECK REPAIR SHALL BE PLACED IN THE EXCAVATED AREA TO THE ELEVATION AT THE BOTTOM OF THE PROPOSED ELASTOMERIC CONCRETE FOR PRESERVATION HEADERS SHOWN.

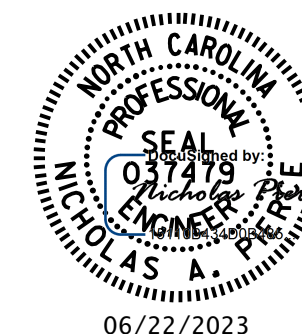
FINAL SURFACE OF THE JOINT DEMOLITION AREA PRIOR TO PLACEMENT OF CONCRETE REPAIR MATERIAL OR ELASTOMERIC CONCRETE SHOULD BE REASONABLY FLAT AND LEVEL. ENGINEER SHALL DETERMINE THE ACCEPTABILITY OF THE SURFACE PRIOR TO PLACEMENT OF REPAIR CONCRETE OR ELASTOMERIC CONCRETE.

RETAIN ALL EXISTING SIDEWALK AND RAILING COVER PLATES AND HARDWARE. CLEAN AND REPAIR AS NEEDED. CONTRACTOR SHALL REPLACE DAMAGED COVER PLATES AND/OR HARDWARE AS NEEDED OR AS DIRECTED BY THE ENGINEER AT NO EXTRA COST TO THE DEPARTMENT.



**JOINT SEAL DETAILS**

PROJECT NO. **15BPR.124.3**  
**WAKE** COUNTY  
 BRIDGE NO. **911084**



**FOAM JOINT SEALS FOR PRESERVATION DETAILS**

DRAWN BY : D.A. CANTRELL/A.Y. GODFREY DATE : 10/2022  
 CHECKED BY : N.A. PIERCE DATE : 10/2022  
 DESIGN ENGINEER OF RECORD : N.A. PIERCE DATE : 12/2022

DOCUMENT NOT CONSIDERED FINAL UNLESS ALL SIGNATURES COMPLETED

| REVISIONS |     |       |     |     |       | SHEET NO.<br>S4-07<br>TOTAL SHEETS<br>21 |
|-----------|-----|-------|-----|-----|-------|--|
| NO.       | BY: | DATE: | NO. | BY: | DATE: |  |
| 1         |     |       | 3   |     |       |  |
| 2         |     |       | 4   |     |       |  |