

DECK UNDERSIDE REPAIR QUANTITY TABLE

SPAN A	QUANTITIES			
	ESTIMATE		ACTUAL	
SHOTCRETE REPAIRS	AREA SF	VOLUME CF	AREA SF	VOLUME CF
UNDERSIDE OF DECK	0	0		
CONCRETE DIAPHRAGM	0	0		
OVERHANG	0	0		
CONCRETE REPAIRS	AREA SF	VOLUME CF	AREA SF	VOLUME CF
UNDERSIDE OF DECK	0	0		
CONCRETE DIAPHRAGM	0	0		
OVERHANG	0	0		



VALUES IN CHART REPRESENT ESTIMATED REPAIR TOTALS AFTER REMOVAL OF UNSOUND CONCRETE, MIN. OF 1" BEHIND REBAR AND MIN. 2" CLEAR TO SAWCUT. SEE REPAIR DETAILS.

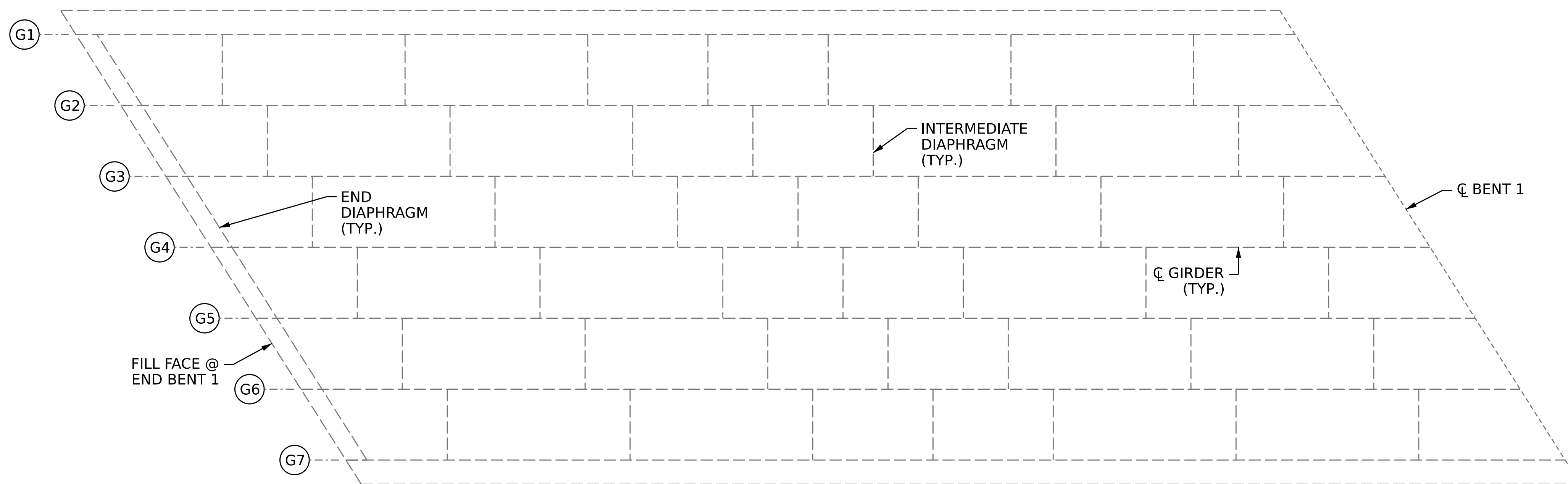
NOTES

REPAIR LOCATIONS AND ESTIMATE OF QUANTITIES ARE GIVEN BASED ON THE BEST INFORMATION AVAILABLE. IF ADDITIONAL REPAIRS NOT SHOWN ON THE DRAWINGS ARE DEEMED NECESSARY BY THE ENGINEER, THE ENGINEER SHALL NOTE ON THE DRAWINGS THE APPROXIMATE LOCATION AND DESCRIPTION OF THE REPAIRS AND ENTER THE ACTUAL QUANTITIES INTO THE REPAIR QUANTITY TABLE.

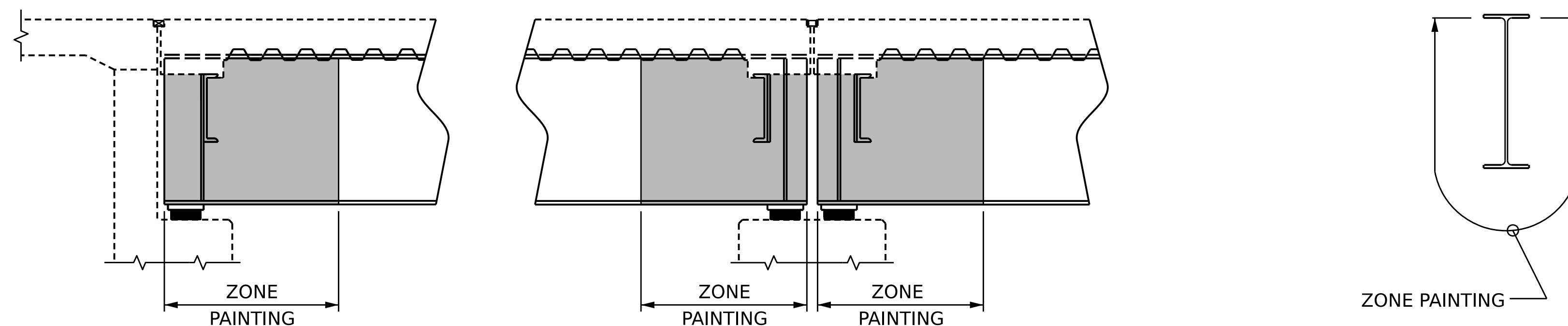
CONCRETE REPAIRS MAYBE SUBSTITUTED IN LIEU OF SHOTCRETE REPAIRS WITH THE APPROVAL OF THE ENGINEER.

ALL GIRDERS SHALL BE PAINTED IN ACCORDANCE WITH THE LIMITS OF ZONE PAINTING DETAIL.

-  SHOTCRETE REPAIR AREA
-  CONCRETE REPAIR AREA



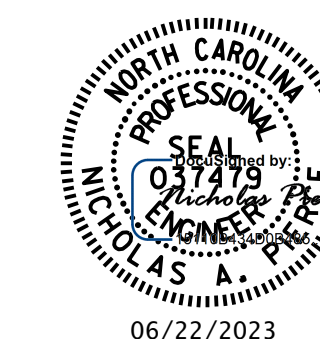
SPAN A
(UNDERSIDE)



LIMITS OF ZONE PAINTING

PROJECT NO. **15BPR.124.3**
WAKE COUNTY
 BRIDGE NO. **911039**

SHEET 1 OF 3



STATE OF NORTH CAROLINA
 DEPARTMENT OF TRANSPORTATION
 RALEIGH
 DECK UNDERSIDE REPAIR

SPAN A

DRAWN BY : D.A. CANTRELL/A.Y. GODFREY DATE : 09/2022
 CHECKED BY : N.A. PIERCE DATE : 10/2022
 DESIGN ENGINEER OF RECORD: N.A. PIERCE DATE : 12/2022

8/22/2023
 R:\Structures\Plans\15BPR124\402_023_15BPR124_SMU_DUR01_S2-12_911039.dgn
 aygodfrey

DOCUMENT NOT CONSIDERED
 FINAL UNLESS ALL
 SIGNATURES COMPLETED

REVISIONS						SHEET NO.
NO.	BY:	DATE:	NO.	BY:	DATE:	S2-12
1			3			TOTAL SHEETS
2			4			18