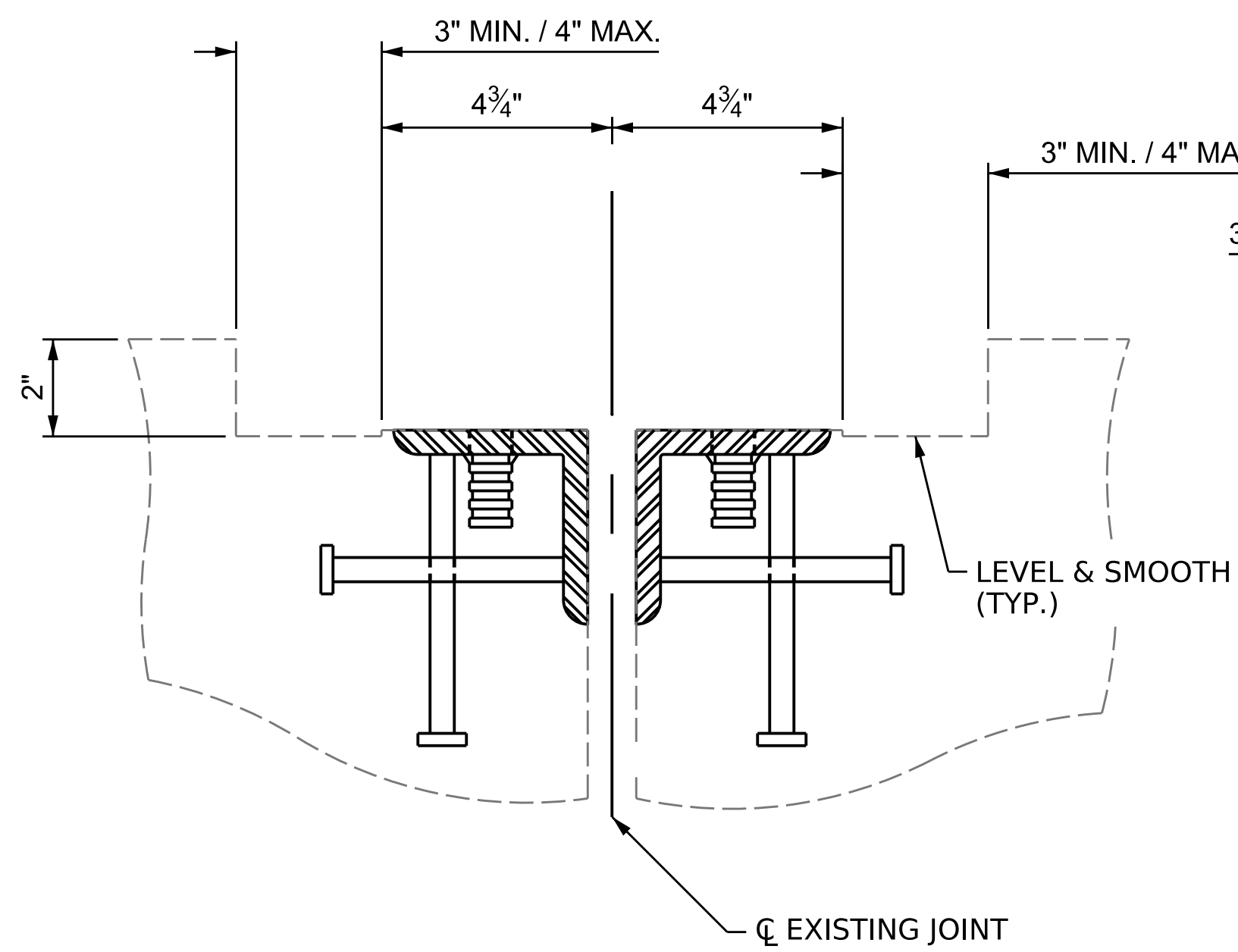
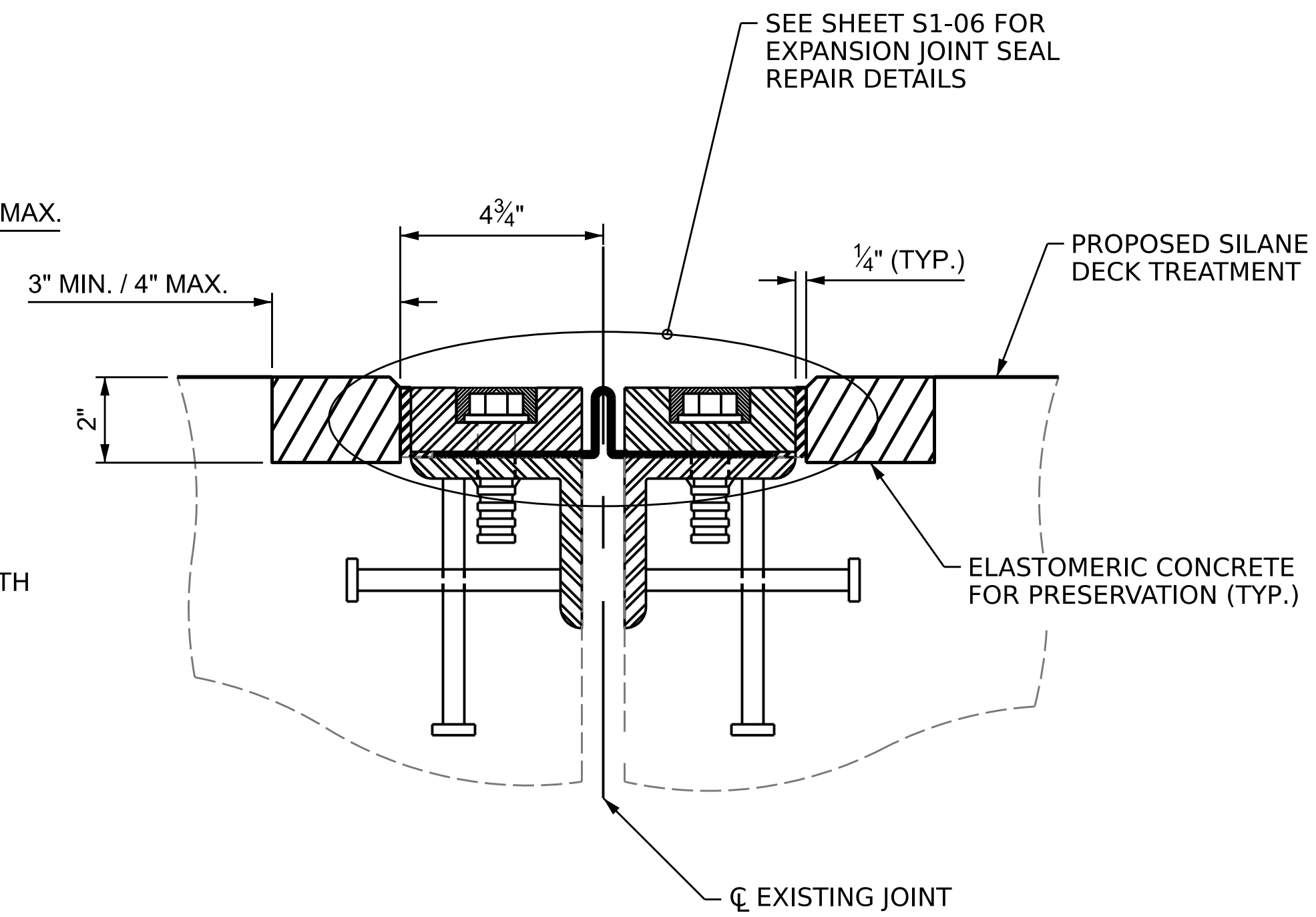


EXISTING EXPANSION JOINT SEAL



EXISTING JOINT AFTER DEMOLITION



PROPOSED EXPANSION JOINT SEAL

ELASTOMERIC CONCRETE FOR PRESERVATION

LOCATION	ESTIMATED (CU.FT.)	ACTUAL (CU.FT.)
BENT 1	15.2	
TOTAL	15.2	

NOTES:

MAKE CONTINUOUS PARALLEL SAW CUTS 2" DEEP ALONG EACH SIDE OF EXISTING JOINT.

EACH SAW CUT SHALL MEASURE A MINIMUM OF 7³/₄" FROM \varnothing JOINT TO A MAXIMUM OF 8³/₄" FROM \varnothing JOINT.

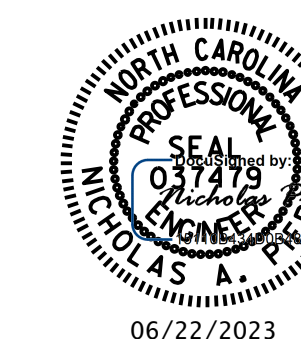
CONCRETE REMOVAL SHALL CREATE A CLEAN AND SMOOTH VOID AS SHOWN FOR THE LENGTH OF THE JOINT BETWEEN TRAFFIC CONTROL ISLANDS FOR THE PLACEMENT OF ELASTOMERIC CONCRETE FOR PRESERVATION.

PROJECT NO. **15BPR.124.3**

DURHAM COUNTY

BRIDGE NO. **310306**

SHEET 3 OF 3



STATE OF NORTH CAROLINA
DEPARTMENT OF TRANSPORTATION
RALEIGH

EXPANSION JOINT SEAL REPAIR DETAILS

DRAWN BY : R.L.PUTEK DATE : 10/2022
 CHECKED BY : A.Y.GODFREY DATE : 10/2022
 DESIGN ENGINEER OF RECORD : N.A. PIERCE DATE : 12/2022

6/22/2023
 R:\Structures\Plans\15BPR124\401.015_15BPR124_SMU_JT02B_S1-08_310306.dgn
 aygodfrey

DOCUMENT NOT CONSIDERED
 FINAL UNLESS ALL
 SIGNATURES COMPLETED

REVISIONS						SHEET NO.
NO.	BY:	DATE:	NO.	BY:	DATE:	S1-08
1			3			TOTAL SHEETS
2			4			15