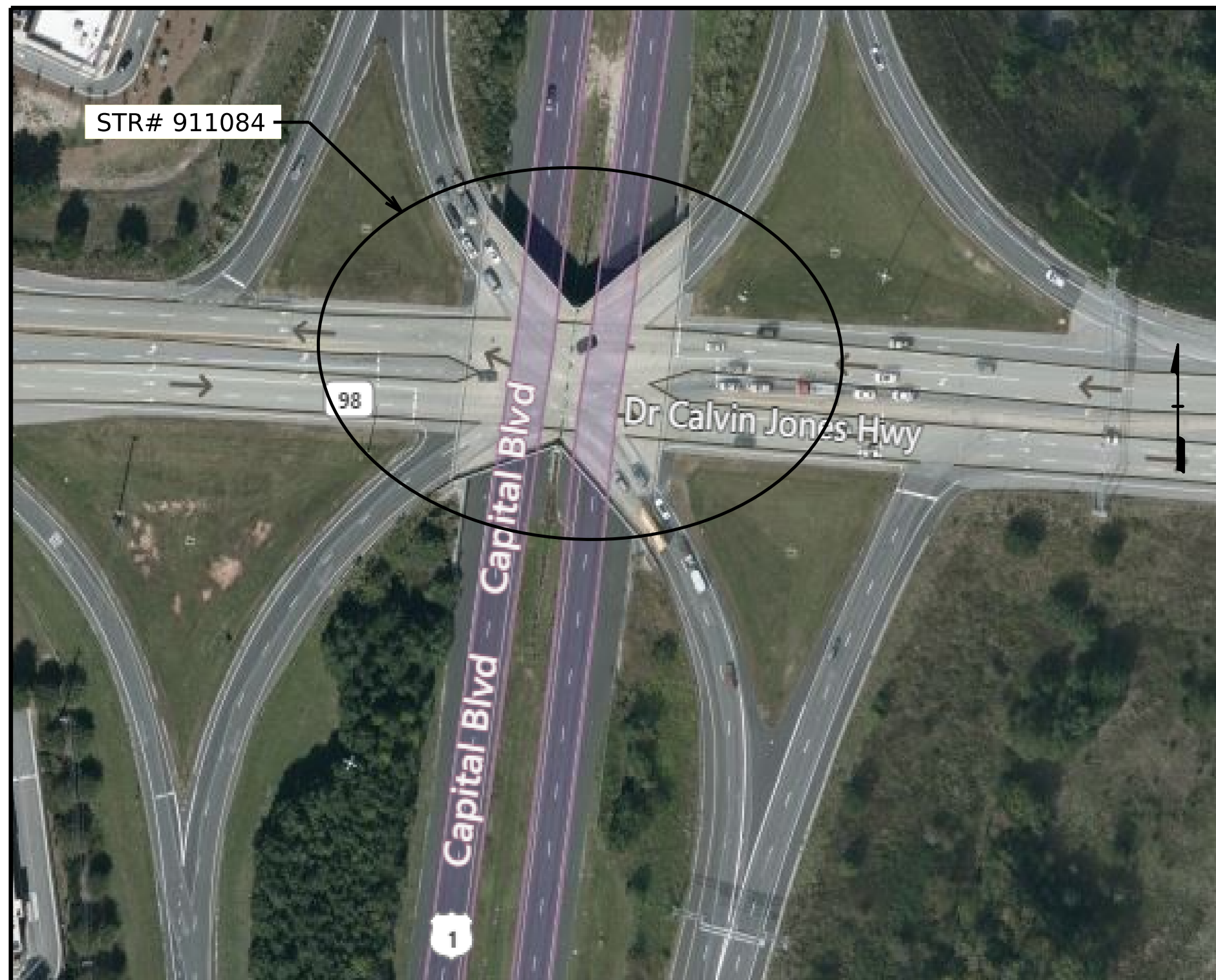


BRIDGE 310306 LOCATION SKETCH



BRIDGE 911039 LOCATION SKETCH



BRIDGE 911083 LOCATION SKETCH



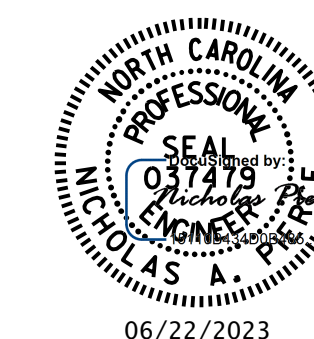
BRIDGE 911084 LOCATION SKETCH

NOTES

INFORMATION INDICATED ON THE LOCATION SKETCH SHALL BE CONSIDERED GENERAL INFORMATION ONLY. THE CONTRACTOR SHALL CONFIRM, THROUGH OTHER SOURCES, SPECIFIC INFORMATION REGARDING BRIDGES, ROADWAYS, UTILITIES, THE SURROUNDING AREA, AND ANY OTHER ASPECTS THAT MAY BE NECESSARY TO PERFORM AND COMPLETE THE PROJECT.

BRIDGE COORDINATES		
BRIDGE No.	LATITUDE	LONGITUDE
310306	35°-54' - 31.47"	78°-56' - 8.67"
911039	35°-46' - 26.39"	78°-32' - 56.61"
911083	35°-57' - 55.17"	78°-32' - 30.55"
911084	35°-57' - 54.40"	78°-32' - 17.67"

PROJECT NO. **15BPR.124.3**
DURHAM/WAKE COUNTY
 BRIDGE NO. **310306, 911039, 911083, 911084**



STATE OF NORTH CAROLINA
 DEPARTMENT OF TRANSPORTATION
 RALEIGH

GENERAL DRAWING
 LOCATION SKETCH

DRAWN BY : D.A. CANTRELL DATE : 03/2022
 CHECKED BY : A.Y. GODFREY DATE : 10/2022
 DESIGN ENGINEER OF RECORD : N.A. PIERCE DATE : 12/2022

DOCUMENT NOT CONSIDERED
 FINAL UNLESS ALL
 SIGNATURES COMPLETED

REVISIONS						SHEET NO.
NO.	BY:	DATE:	NO.	BY:	DATE:	S-01
1			3			TOTAL SHEETS
2			4			73