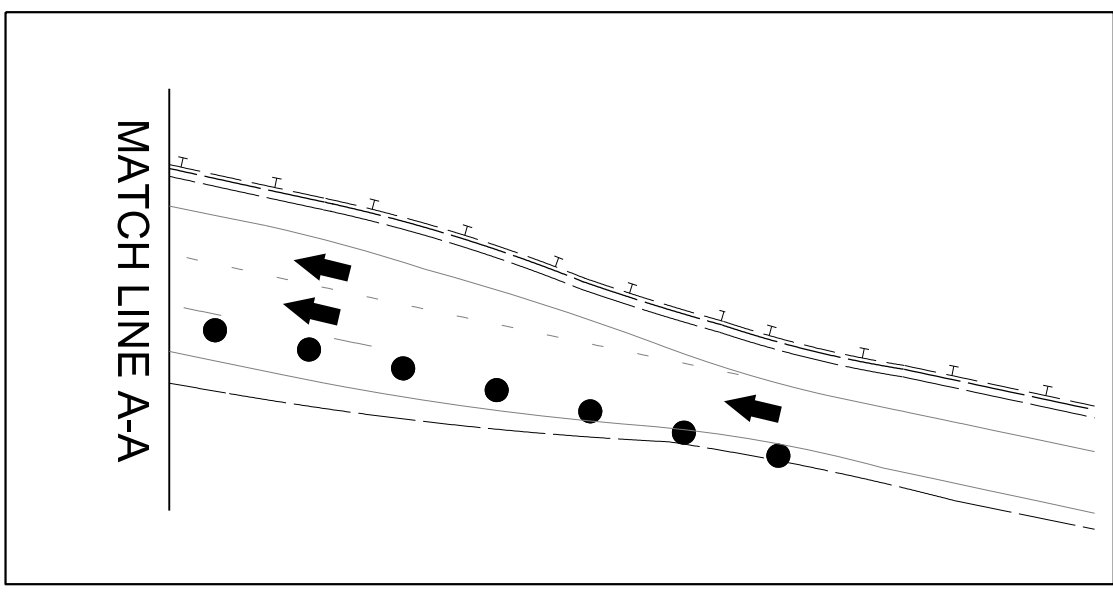


CHANGEABLE MESSAGE SIGN
 NC 98 EAST CLOSED
 DETOUR EXIT RIGHT



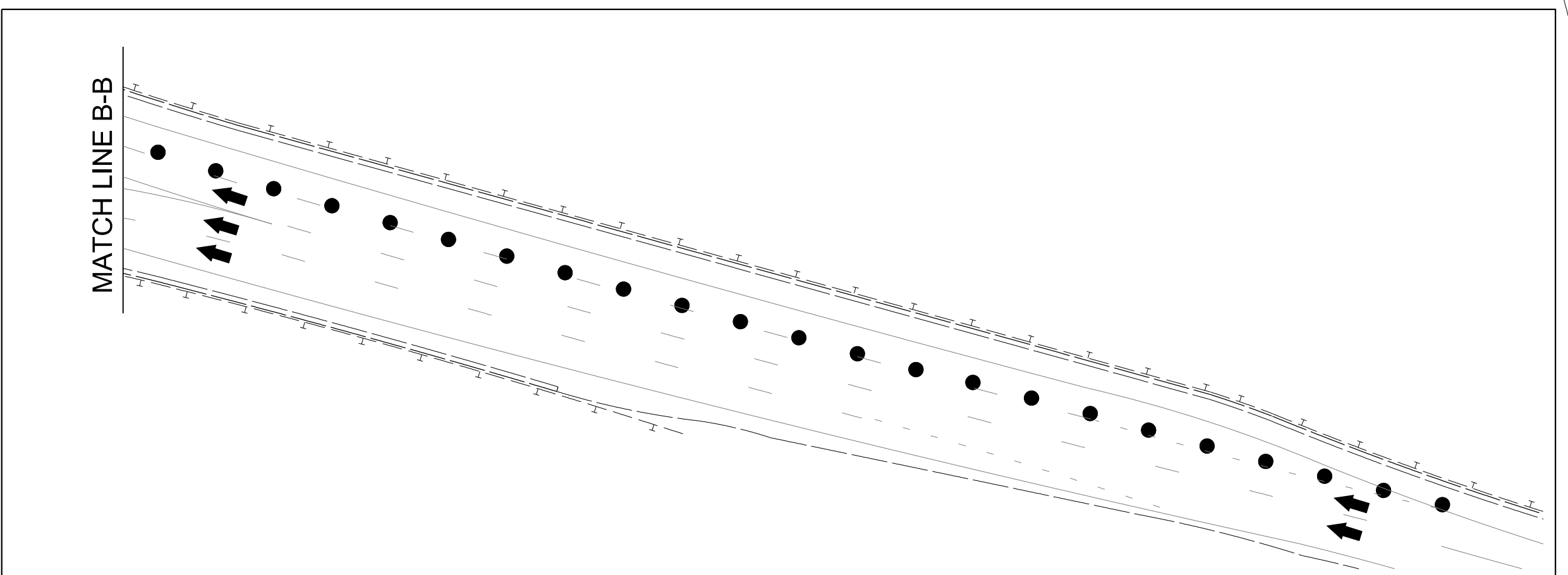
MATCH LINE SHEET TMP-7

270'

DR PARKHURSTON

SEE SHEET TMP-7C
 FOR NC 98 EAST
 DETOUR ROUTE

CHANGEABLE MESSAGE SIGN
 NC 98 EAST CLOSED
 DETOUR EXIT RIGHT

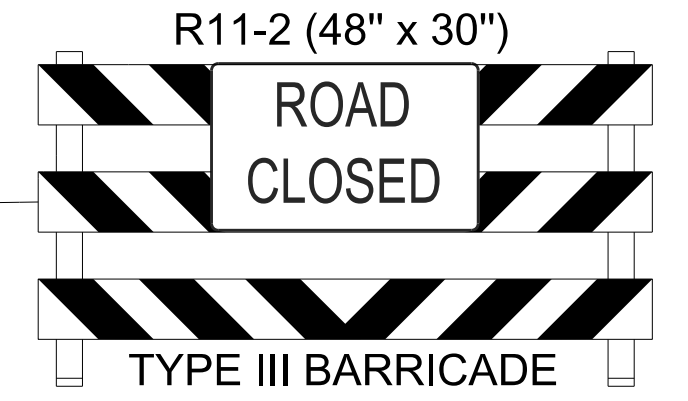


MATCH LINE A-A

US 1 (CAPITAL BLVD.)

BRIDGE #911083

NO TURN ON RED
 R10-11
 24" X 36"



MATCH LINE B-B

US 1 (CAPITAL BLVD.)

MATCH LINE SHEET TMP-7B

6/8/2023
 U:\Traffic\Transportation Management Plan\TCP\PLAN SHEETS\15BPR.124.3_TMP_07A_911084_PHASE_01.dgn
 angood

Stantec
 Stantec Consulting Services Inc.
 801 Jones Franklin Road
 Suite 300
 Raleigh, NC 27606
 Tel. 919.851.6866
 Fax. 919.851.7024
 www.stantec.com
 License No. F-0672

DocuSigned by
 Regina M. Muncy
 43239
 6/8/2023

REGINA M. MUNCY
 ENGINEER
 SEAL
 43239
 NORTH CAROLINA
 PROFESSIONAL ENGINEER

DIVISION OF HIGHWAYS
 NORTH CAROLINA
 DEPARTMENT OF TRANSPORTATION
 WORK ZONE TRAFFIC CONTROL

BRIDGE #911084
 NC 98 EAST
 PHASE I

DOCUMENT NOT CONSIDERED FINAL
 UNLESS ALL SIGNATURES COMPLETED