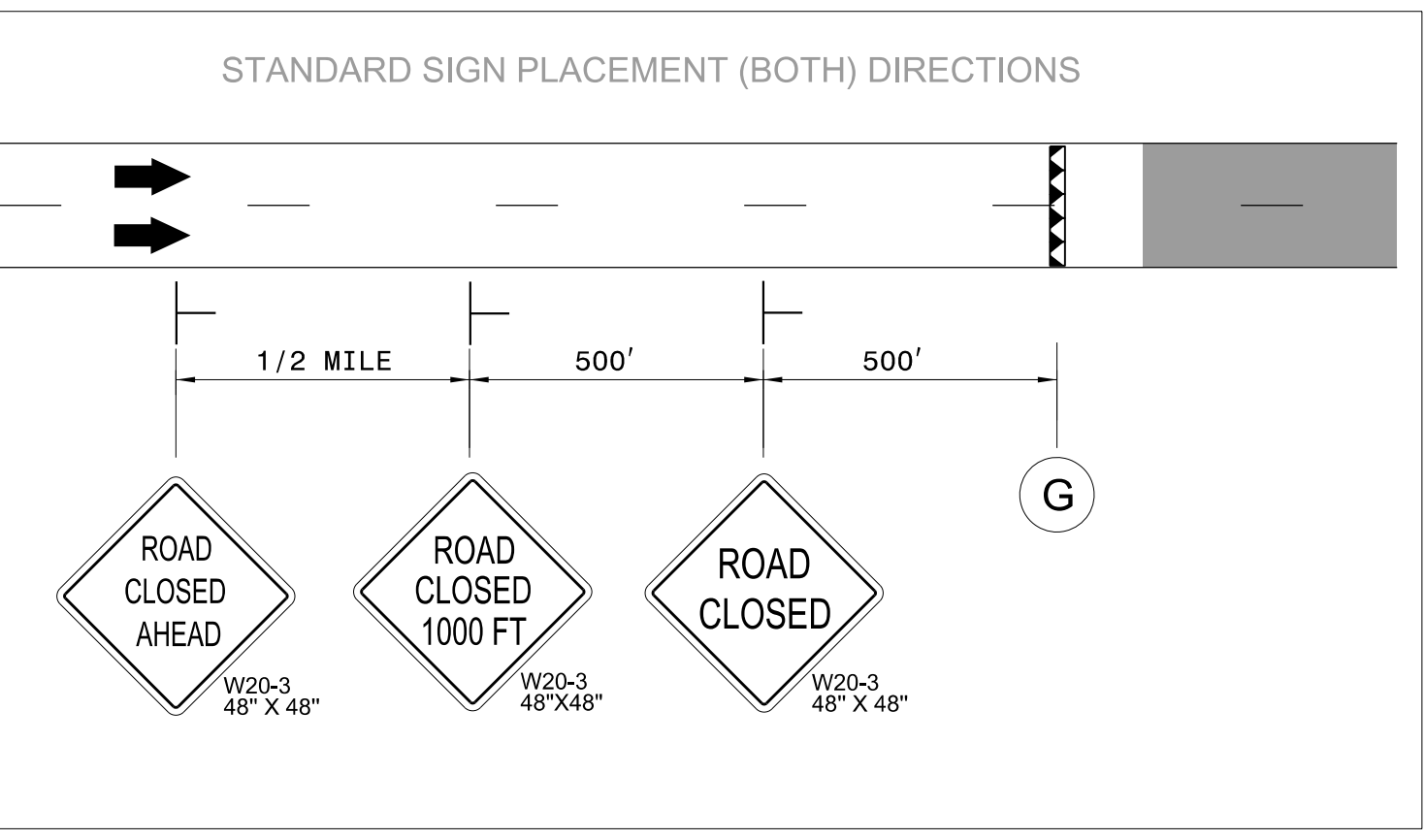
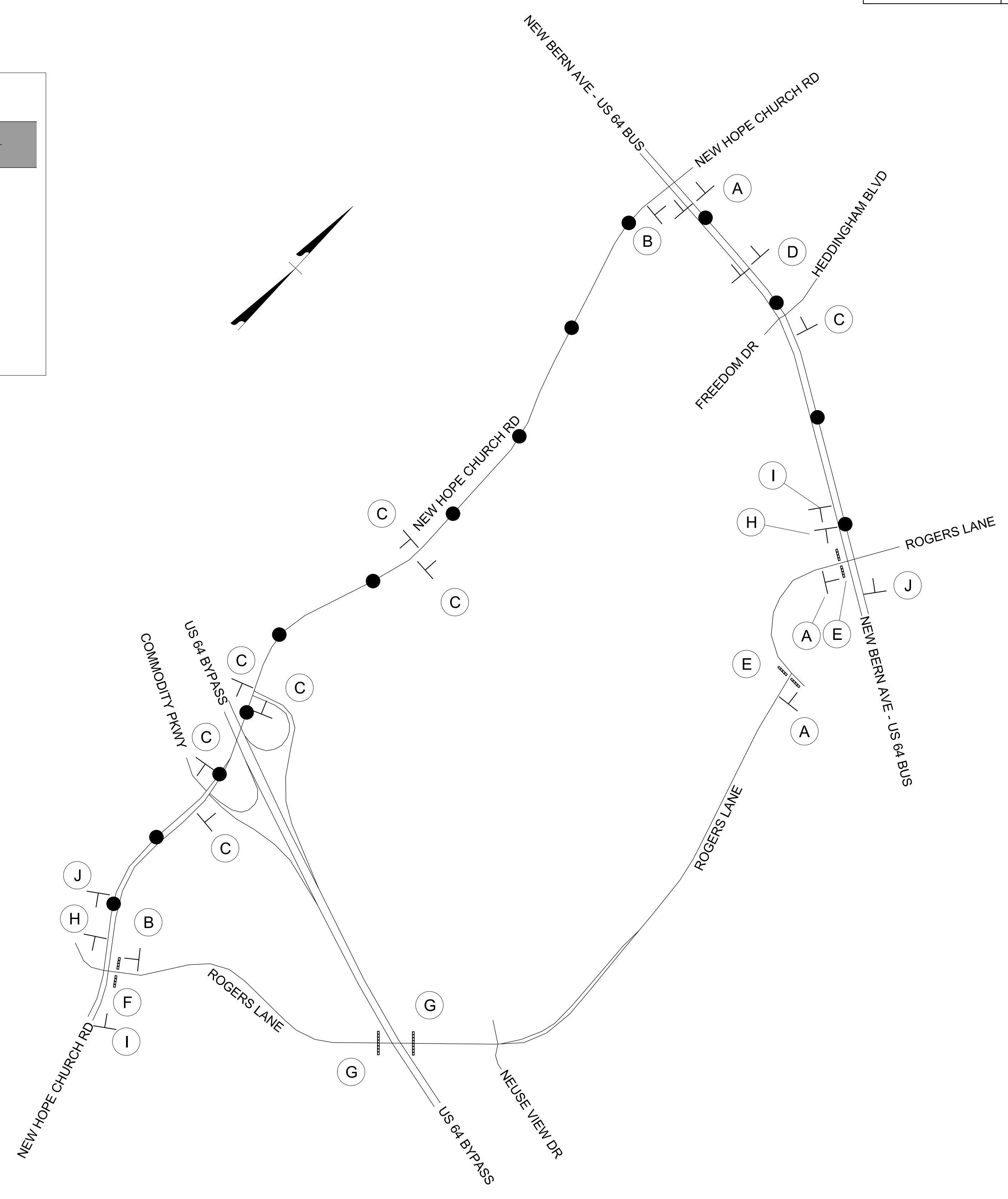


<p>(A) ROGERS LN SD-2 SEE TMP-2 DETOUR M4-8 24"x12" ← M6-1L 21"x15"</p>	<p>(B) ROGERS LN SD-2 SEE TMP-2 DETOUR M4-8 24"x12" → M6-1 21"x15"</p>
<p>(C) ROGERS LN SD-2 SEE TMP-2 DETOUR M4-8 24"x12" ↑ M6-3 21"x15"</p>	<p>(D) ROGERS LN SD-2 SEE TMP-2 DETOUR M4-8 24"x12" ↙ M5-1 21"x15"</p>
<p>(E) R11-3 (60" x 30") ROAD CLOSED XX MILES AHEAD LOCAL TRAFFIC ONLY DETOUR → M4-10R (48" x 18") TYPE III BARRICADE</p>	<p>(F) R11-4 (60" x 30") ROAD CLOSED TO THRU TRAFFIC DETOUR ← M4-10L (48" x 18") TYPE III BARRICADE</p>
<p>(G) R11-2 (48" x 30") ROAD CLOSED TYPE III BARRICADE</p>	<p>(H) END DETOUR M4-8a 24"x18"</p>
<p>(I) ROAD CLOSED AHEAD W20-3 48" X 48" NEXT RIGHT SP-4R 48" X 12"</p>	<p>(J) ROAD CLOSED AHEAD W20-3 48" X 48" NEXT LEFT SP-4L 48" X 12"</p>



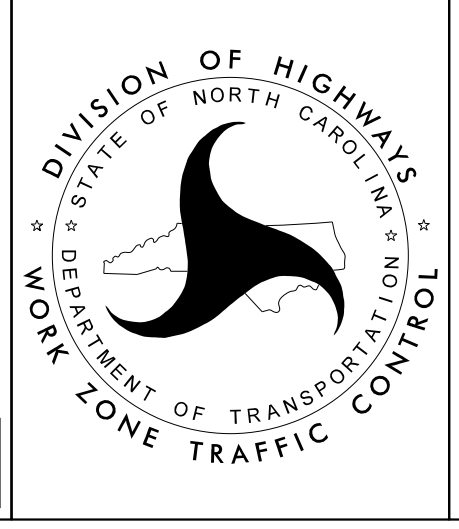
● = ROGERS LN DETOUR ROUTE



6/8/2023 Us:\Traffic\Transportation Management Plan\TCP\PLAN SHEETS\15BPR.124.3_TMP_05_91039-ROGERS-DETOUR.dgn angood

Stantec
Stantec Consulting Services Inc.
801 Jones Franklin Road
Suite 300
Raleigh, NC 27606
Tel. 919.851.6866
Fax. 919.851.7024
www.stantec.com
License No. F-0672

DocuSigned by
Regina M. Muncy
SEAL
43239
REGINA M. MUNCY
ENGINEER
6/8/2023
**DOCUMENT NOT CONSIDERED FINAL
UNLESS ALL SIGNATURES COMPLETED**



**BRIDGE 911039
ROGERS LANE
DETOUR ROUTE**