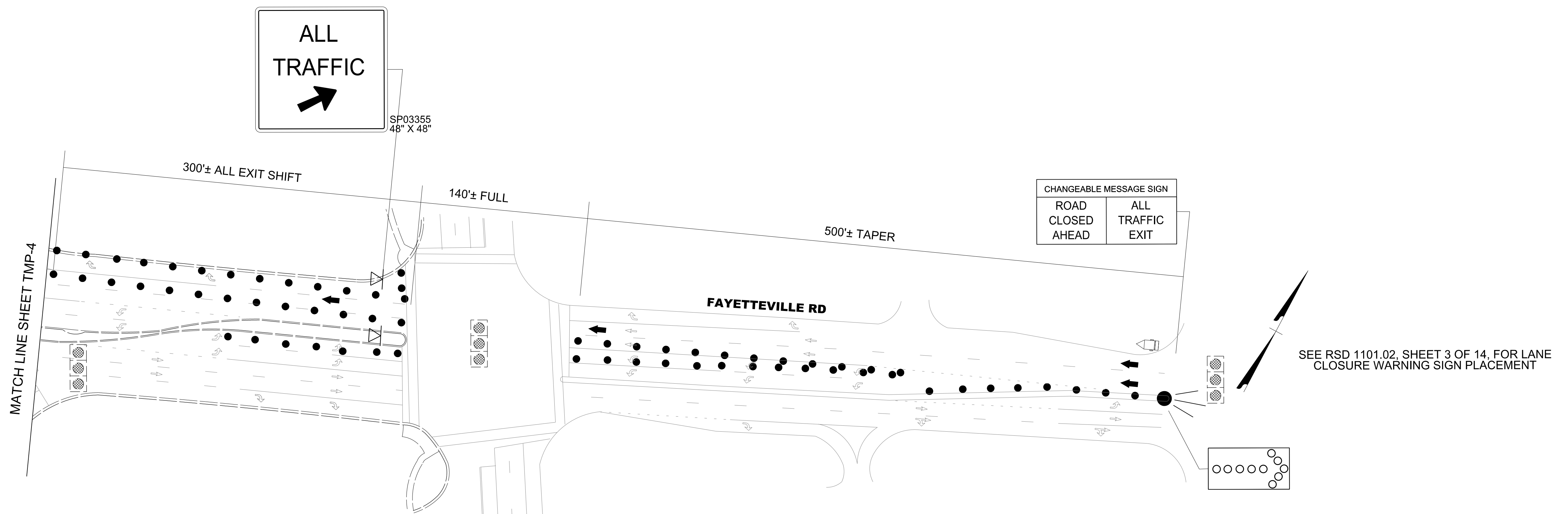


CHANGEABLE MESSAGE SIGN  
 ROAD CLOSED AHEAD    ALL TRAFFIC EXIT

SEE RSD 1101.02, SHEET 3 OF 14, FOR LANE CLOSURE WARNING SIGN PLACEMENT



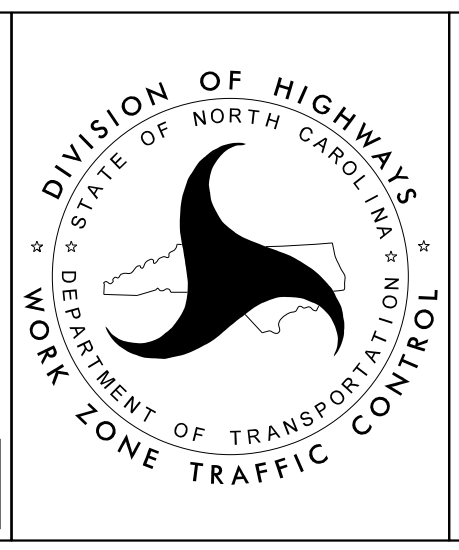
SEE RSD 1101.02, SHEET 3 OF 14, FOR LANE CLOSURE WARNING SIGN PLACEMENT

6/8/2023  
 U:\Traffic\Transportation Management\Plan\TCP\PLAN SHEETS\15BPR.124.3\_TMP\_04A\_310306\_PHASE\_01.dgn  
 angood

**Stantec**  
 Stantec Consulting Services Inc.  
 801 Jones Franklin Road  
 Suite 300  
 Raleigh, NC 27606  
 Tel. 919.851.6866  
 Fax. 919.851.7024  
 www.stantec.com  
 License No. F-0672

DocuSigned by  
 Regina M. Municy  
 SEAL  
 43239  
 REGINA M. MUNICY  
 ENGINEER  
 6/8/2023

**DOCUMENT NOT CONSIDERED FINAL  
 UNLESS ALL SIGNATURES COMPLETED**



**BRIDGE 310306  
 PHASE I**