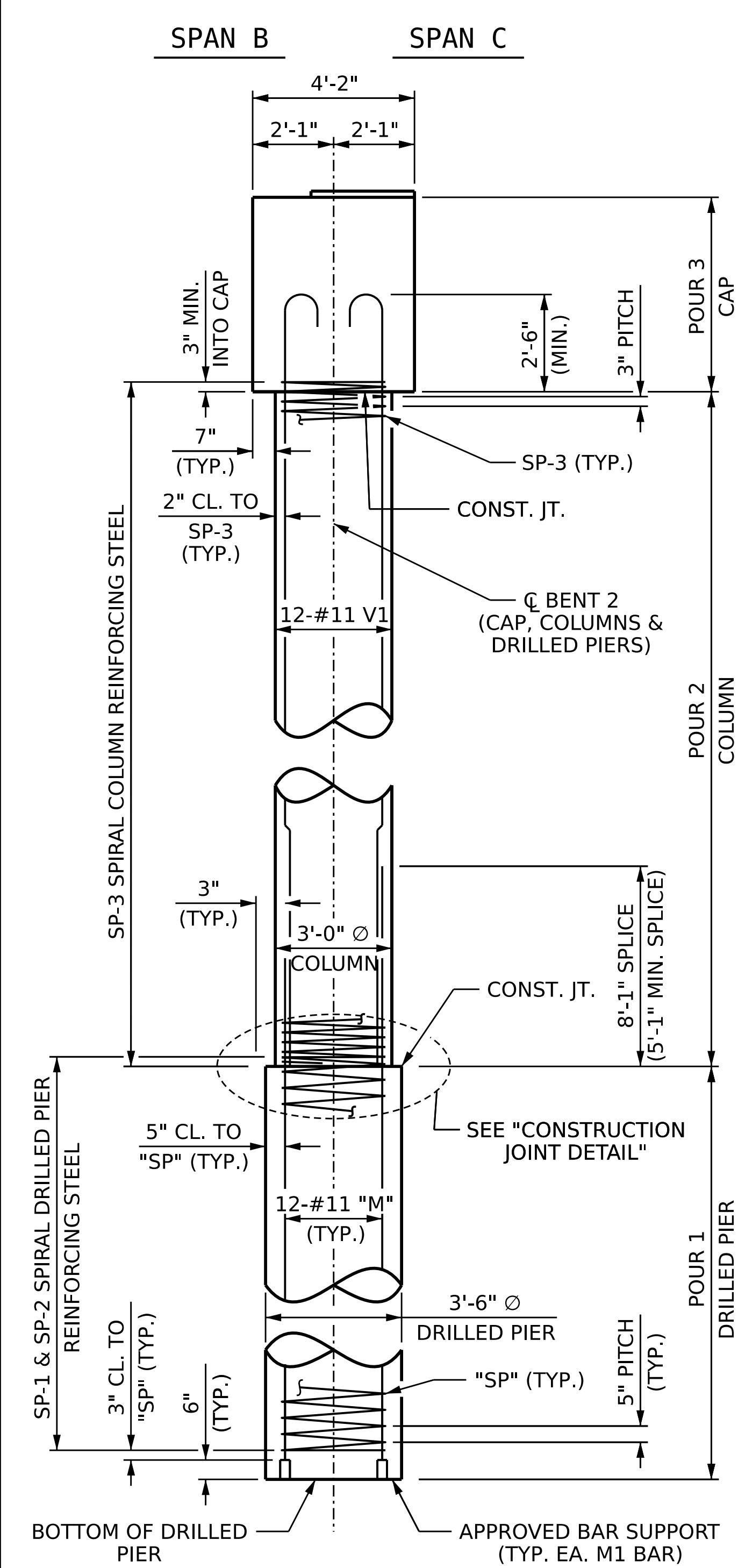
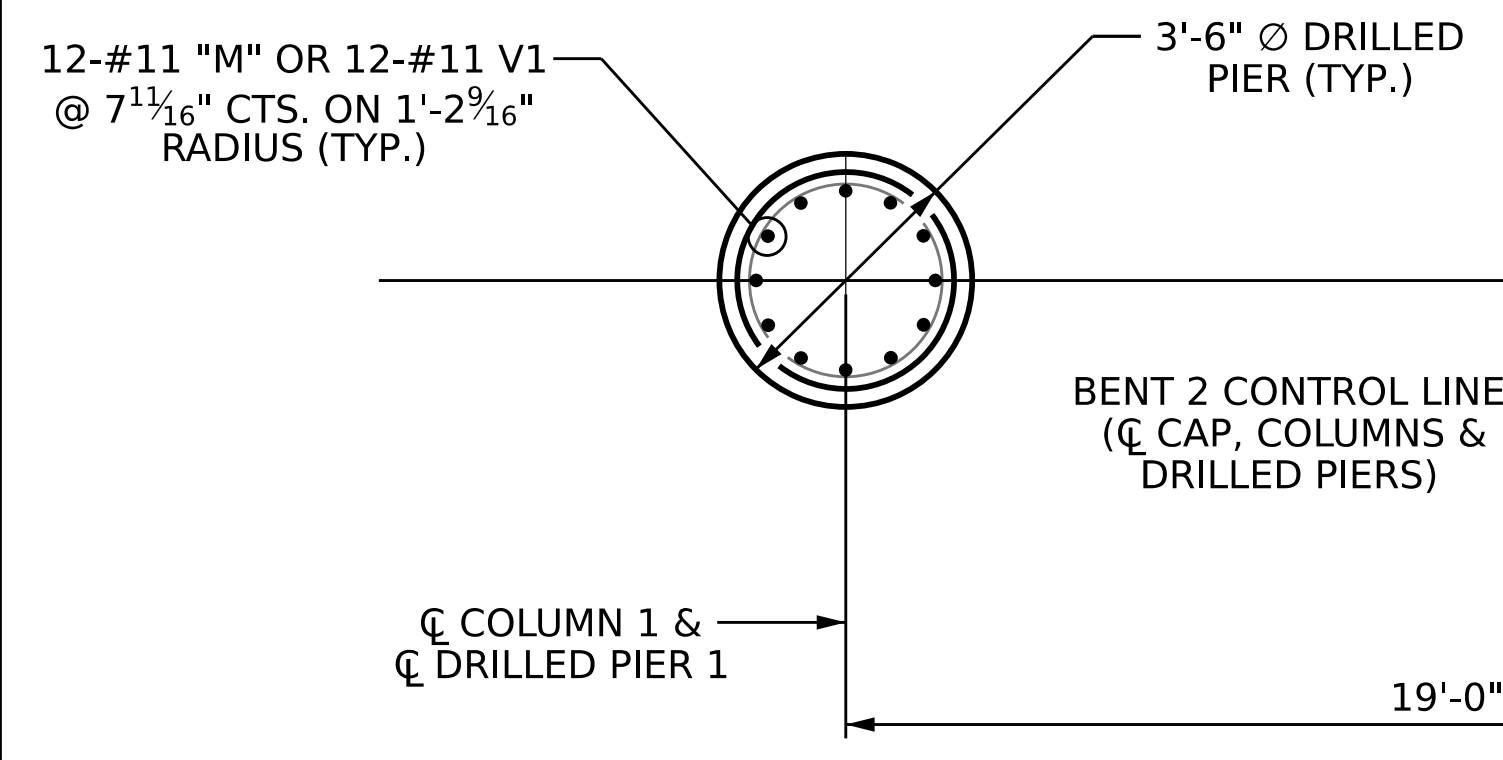


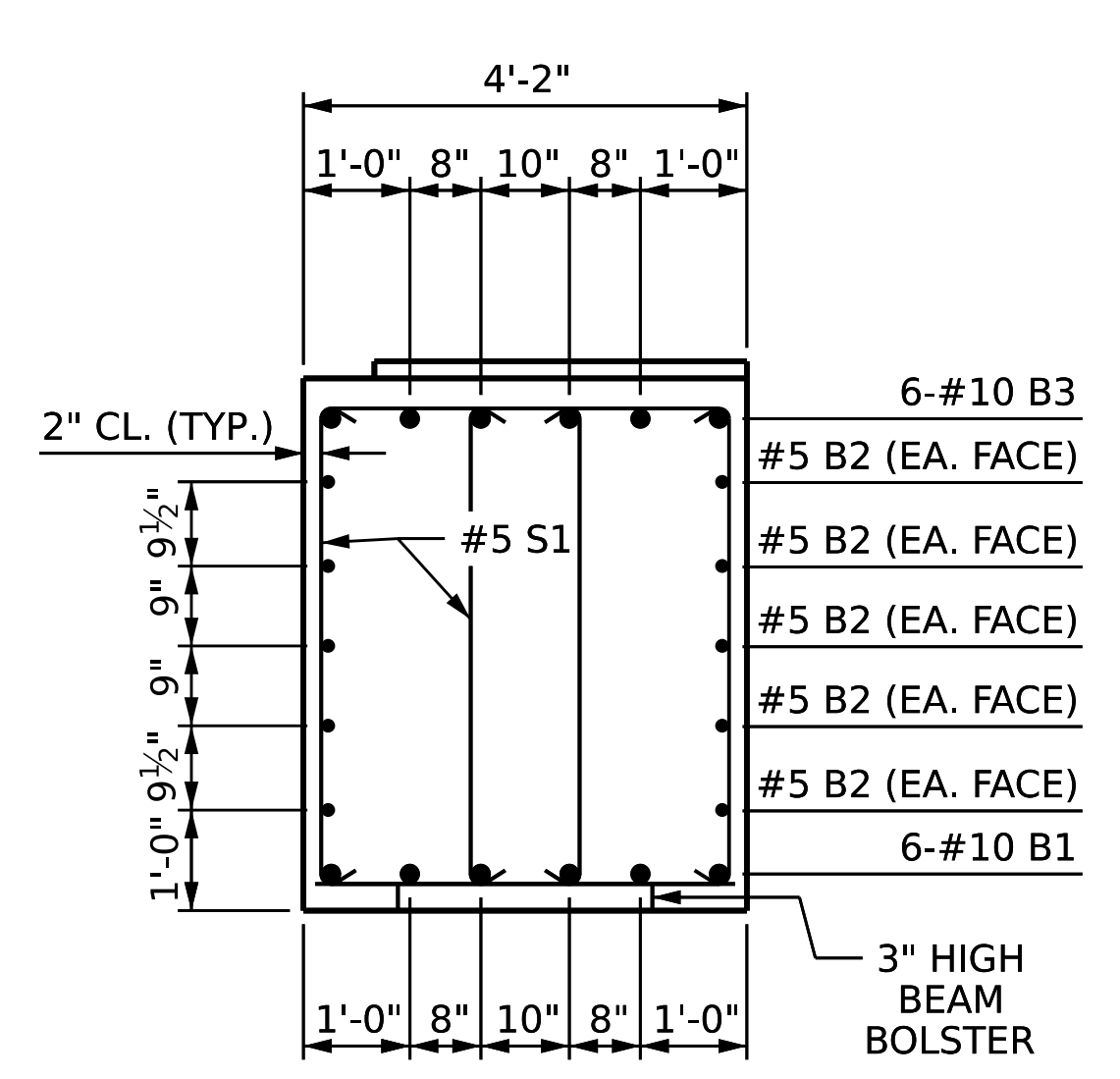
3/21/2023 8:16:29 AM P:\Raleigh\Projects\2019\Division 9 (Davenport)\B-5783\Structures\Drawings\NEW\280168\_SB\B-5783\_SMU\_B2\_280168.dgn



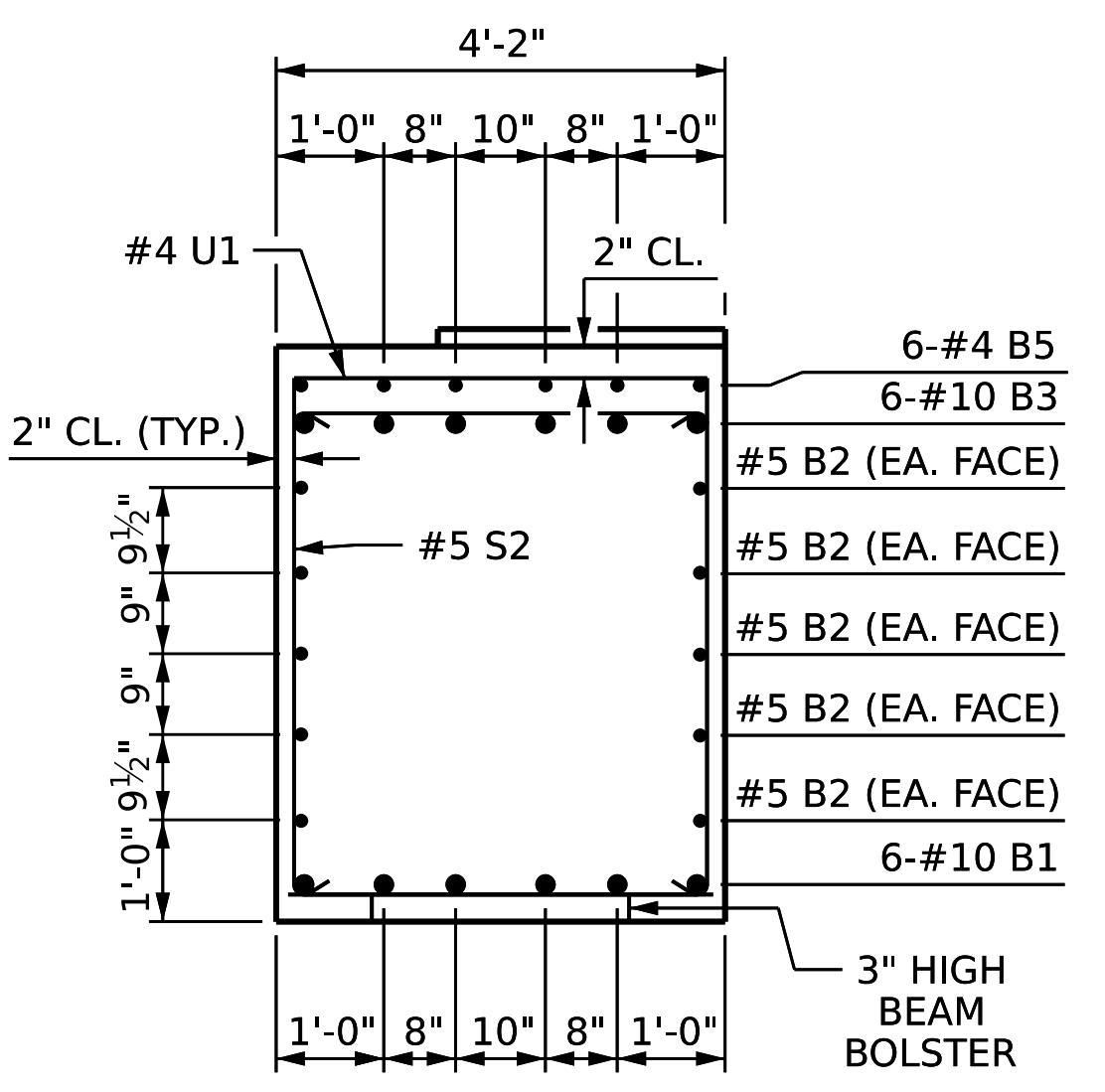
**END ELEVATION**



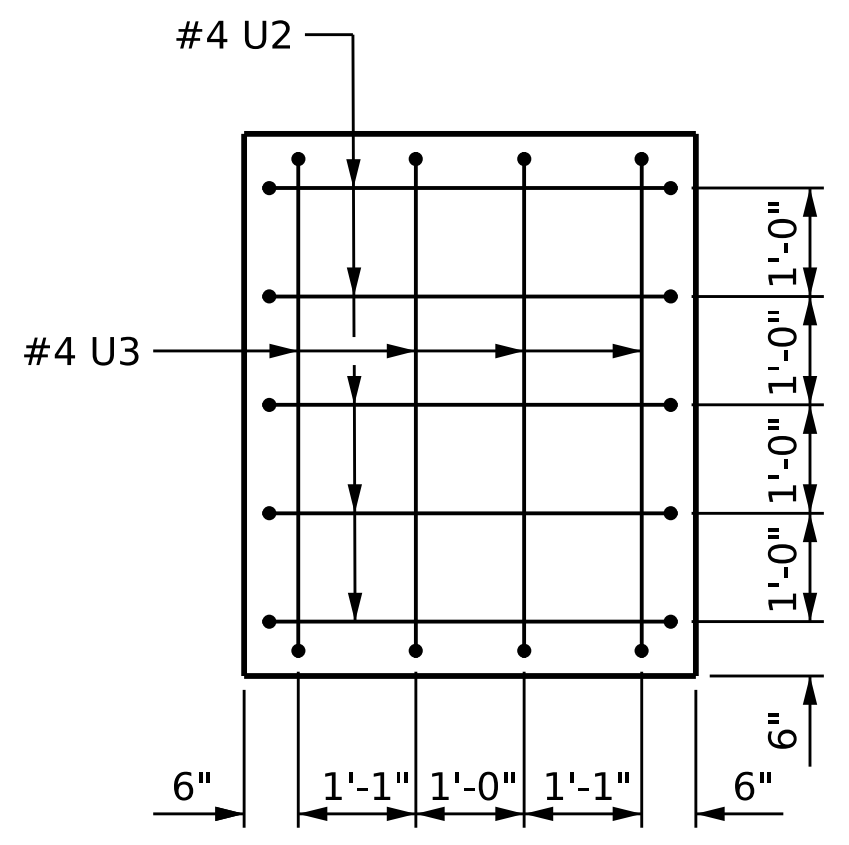
**PLAN OF DRILLED PIERS AND COLUMNS**



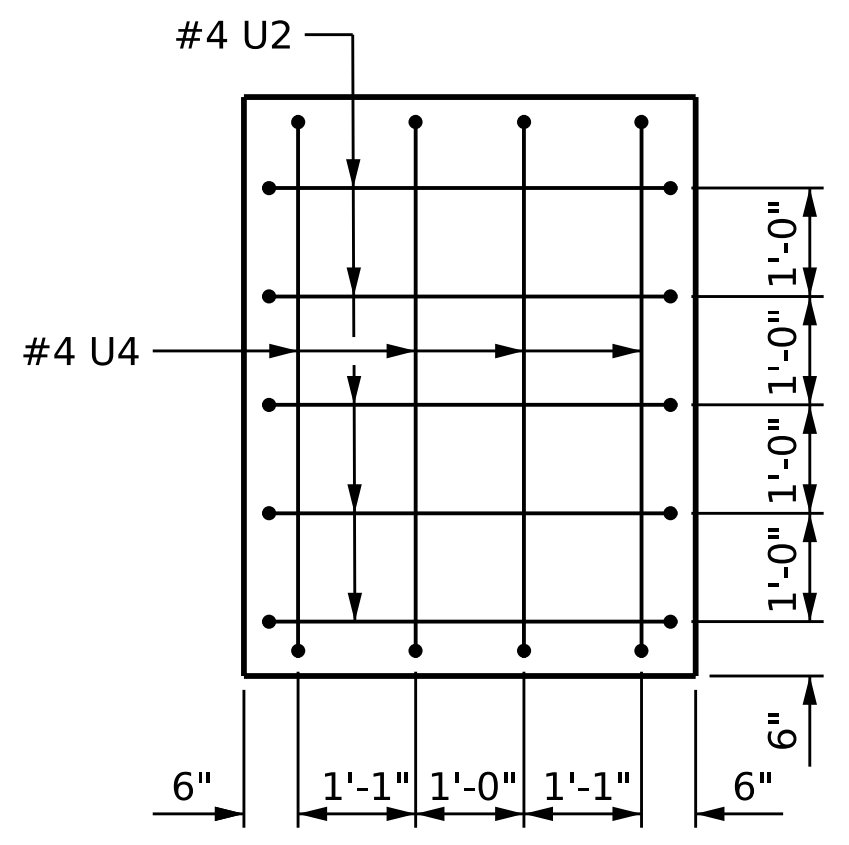
**SECTION A-A**



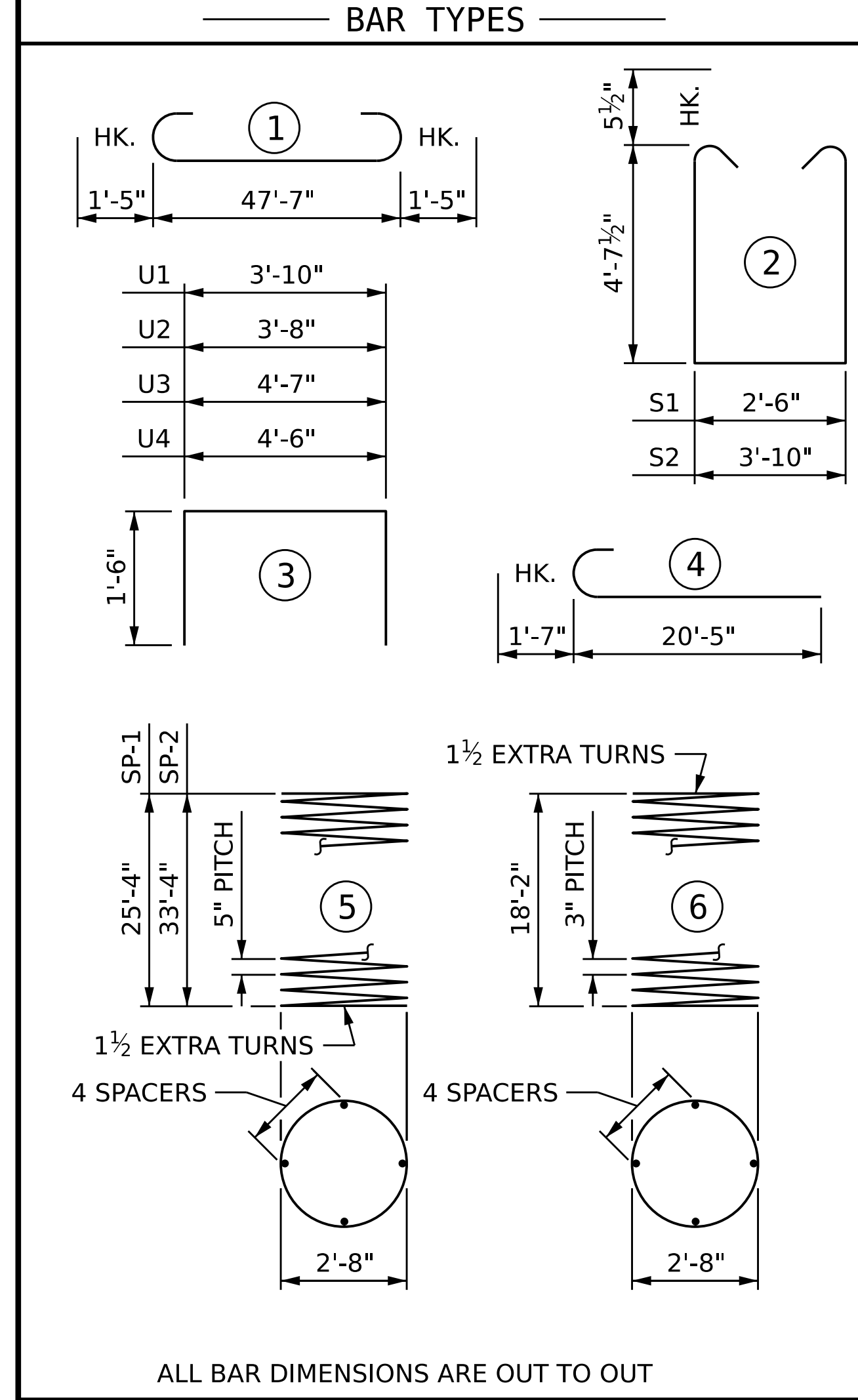
**SECTION B-B**



**VIEW X-X**

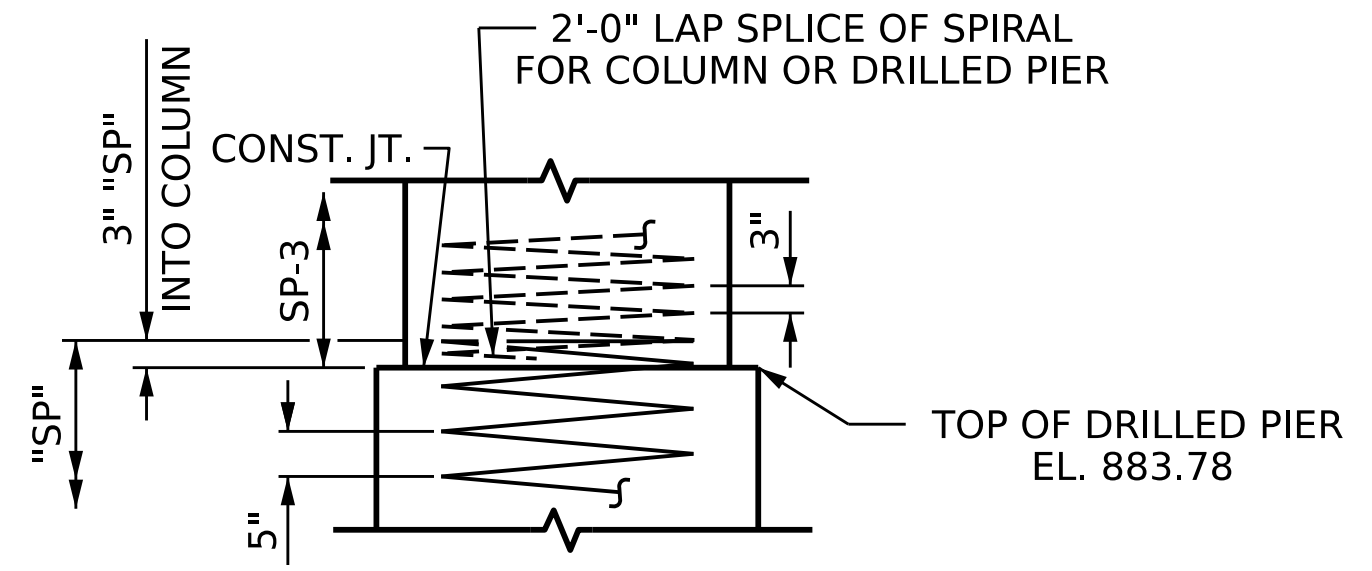


**VIEW Y-Y**



ALL BAR DIMENSIONS ARE OUT TO OUT

\* THE "SP-1" & "SP-2" SPIRAL REINFORCING STEEL SHALL BE W21 OR D-31 COLD DRAWN WIRE OR #5 PLAIN OR DEFORMED BAR.  
 \*\* THE "SP-3" SPIRAL REINFORCING STEEL SHALL BE W20 OR D-20 COLD DRAWN WIRE OR #4 PLAIN OR DEFORMED BAR.



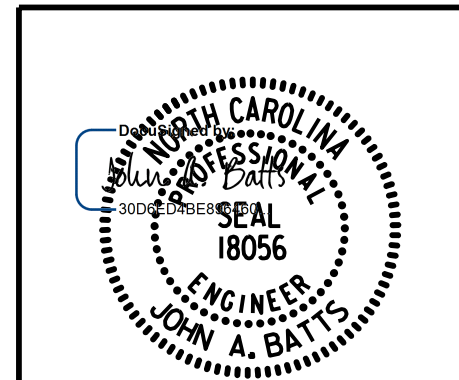
**CONSTRUCTION JOINT DETAIL**

| BILL OF MATERIAL             |     |      |      |         |          |
|------------------------------|-----|------|------|---------|----------|
| BENT 2                       |     |      |      |         |          |
| BAR                          | NO. | SIZE | TYPE | LENGTH  | WEIGHT   |
| B1                           | 6   | #10  | STR  | 47'-9"  | 1233     |
| B2                           | 10  | #5   | STR  | 47'-9"  | 498      |
| B3                           | 6   | #10  | 1    | 50'-5"  | 1302     |
| B4                           | 6   | #4   | STR  | 10'-9"  | 43       |
| B5                           | 6   | #4   | STR  | 15'-5"  | 62       |
| M1                           | 12  | #11  | STR  | 33'-5"  | 2131     |
| M2                           | 24  | #11  | STR  | 41'-5"  | 5281     |
| S1                           | 20  | #5   | 2    | 12'-8"  | 264      |
| S2                           | 44  | #5   | 2    | 14'-0"  | 642      |
| U1                           | 62  | #4   | 3    | 6'-10"  | 283      |
| U2                           | 10  | #4   | 3    | 6'-8"   | 45       |
| U3                           | 4   | #4   | 3    | 7'-7"   | 20       |
| U4                           | 4   | #4   | 3    | 7'-6"   | 20       |
| V1                           | 36  | #11  | 4    | 22'-0"  | 4208     |
| SP-1                         | 1   | *    | 5    | 520'-3" | 543      |
| SP-2                         | 2   | *    | 5    | 677'-2" | 1413     |
| SP-3                         | 3   | **   | 6    | 616'-4" | 1235     |
| REINFORCING STEEL            |     |      |      |         | 16032 LB |
| SPIRAL COL. REINF. STEEL     |     |      |      |         | 3191 LB  |
| CLASS "A" CONCRETE BREAKDOWN |     |      |      |         |          |
| POUR 2 (COLUMNS)             |     |      |      |         | 14.1 CY  |
| POUR 3 (CAP)                 |     |      |      |         | 38.6 CY  |
| TOTAL                        |     |      |      |         | 52.7 CY  |
| DRILLED PIERS:               |     |      |      |         |          |
| DRILLED PIER CONCRETE        |     |      |      |         |          |
| POUR 1 (DRILLED PIERS)       |     |      |      |         | 33.3 CY  |

PROJECT NO. B-5783  
 DAVIDSON COUNTY  
 STATION: 21+53.61 -SBL-  
 SHEET 2 OF 2

STATE OF NORTH CAROLINA  
 DEPARTMENT OF TRANSPORTATION  
 RALEIGH  
 SUBSTRUCTURE

**BENT 2**



**W WGI**  
 5640 Dillard Drive, Suite 200  
 Cary, NC 27518  
 LICENSURE NO. C-4434

DRAWN BY : S.D. COOPER DATE : 12-22  
 CHECKED BY : J.A. BATTS DATE : 12-22  
 DESIGN ENGINEER OF RECORD : J.A. BATTS DATE : 12-22

| REVISIONS |     |       |     | SHEET NO. |       |
|-----------|-----|-------|-----|-----------|-------|
| NO.       | BY: | DATE: | NO. | BY:       | DATE: |
| 1         |     |       | 3   |           |       |
| 2         |     |       | 4   |           |       |

DOCUMENT NOT CONSIDERED FINAL  
 UNLESS ALL SIGNATURES COMPLETED

TOTAL SHEETS: 40