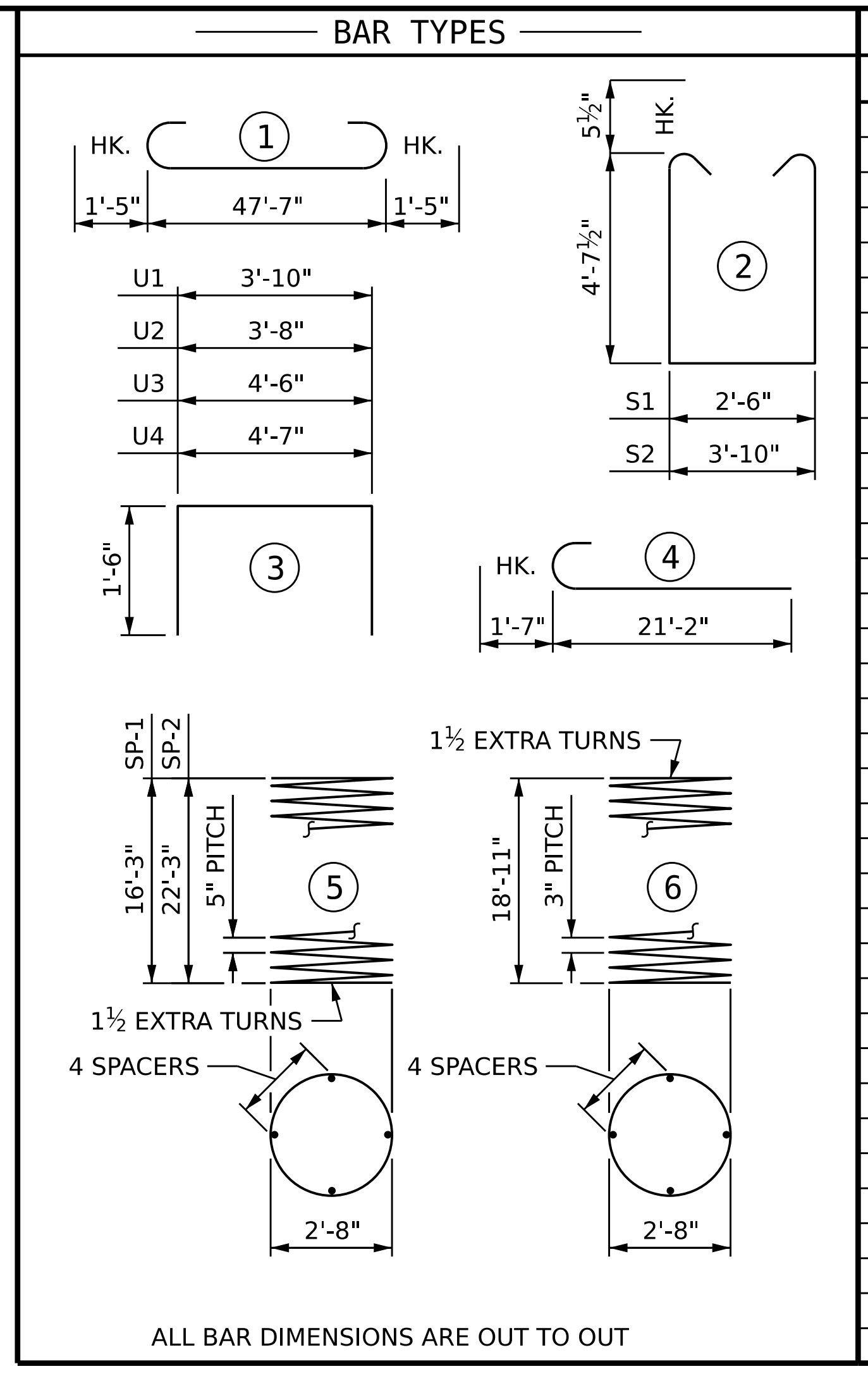
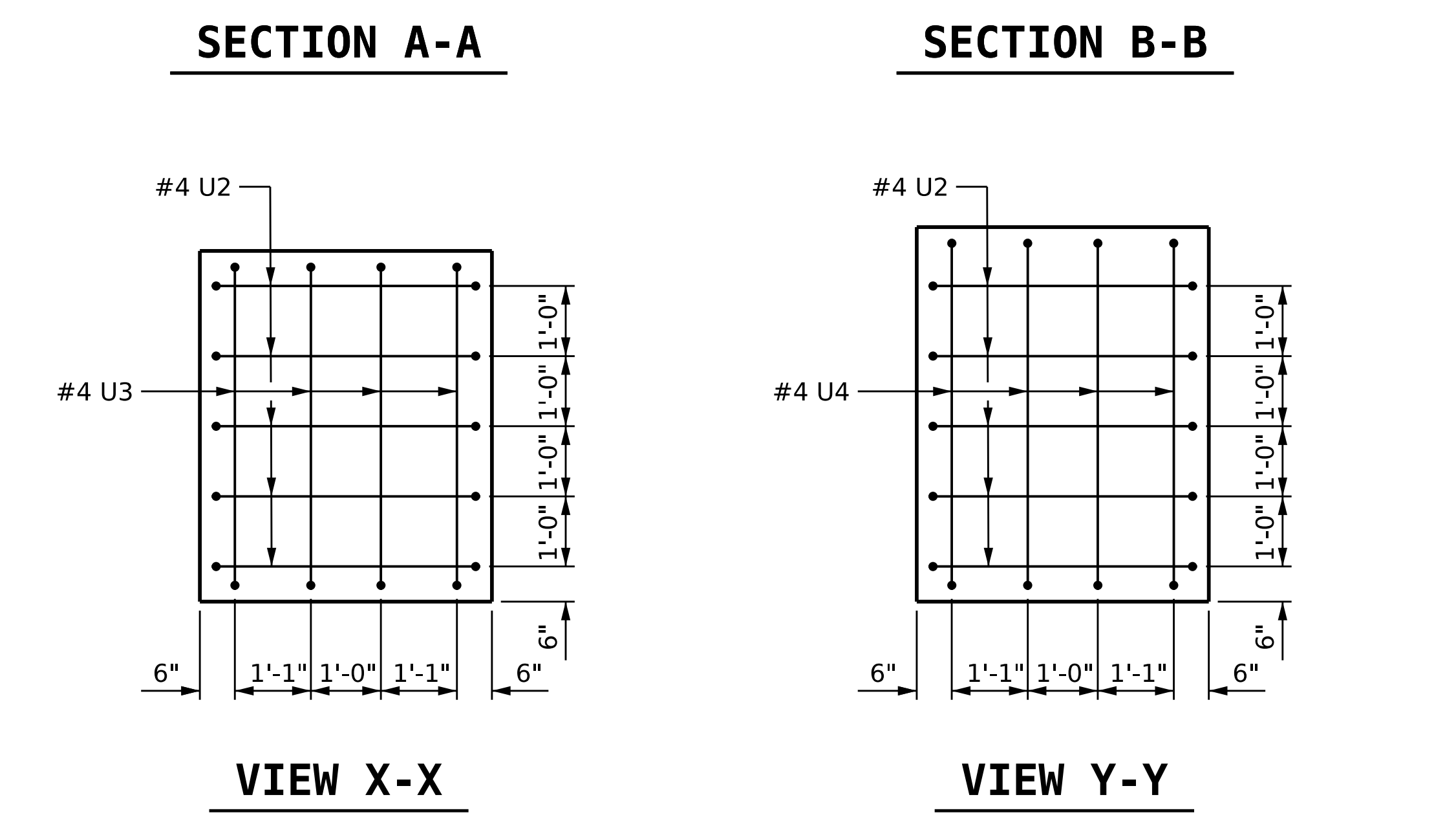
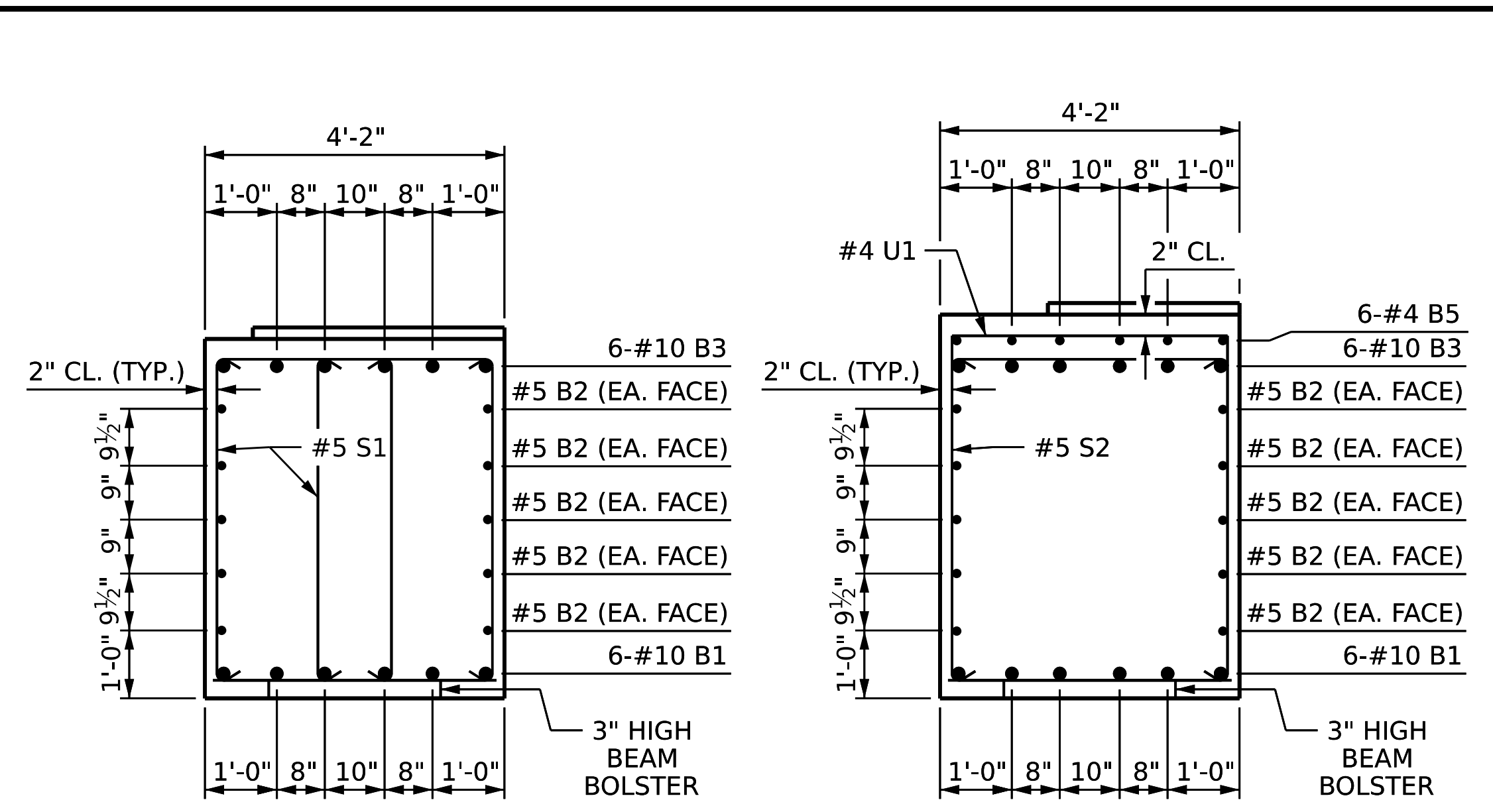
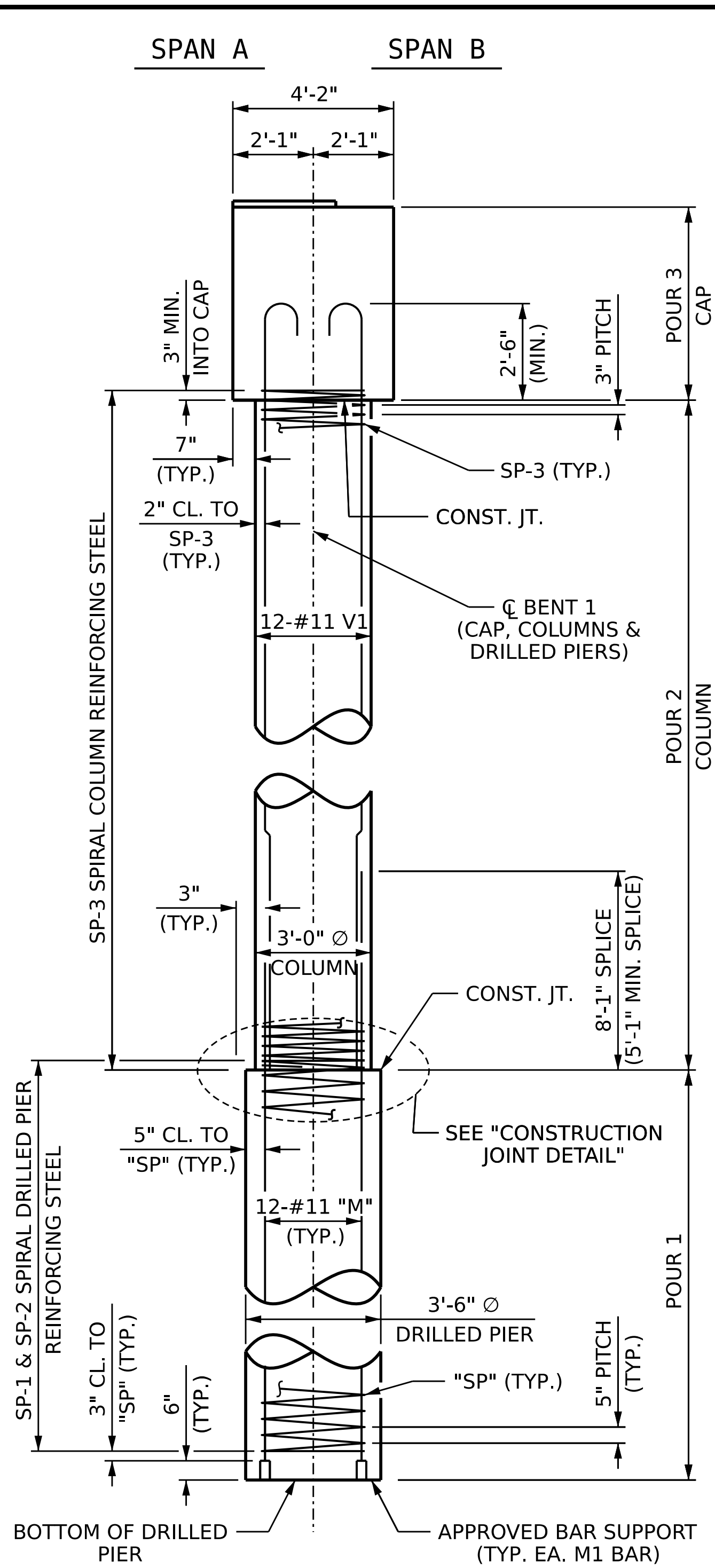
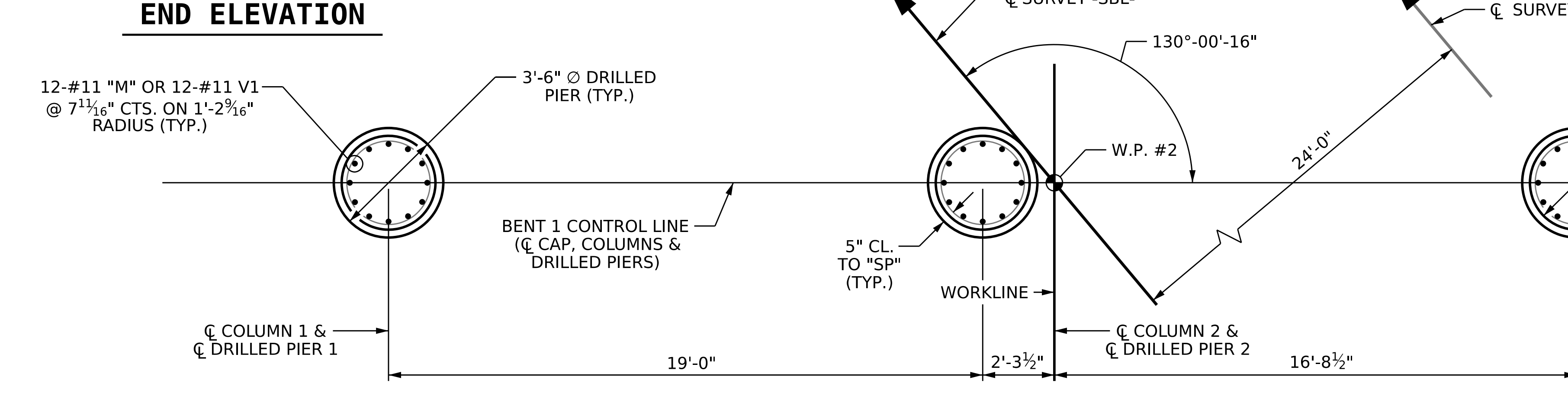
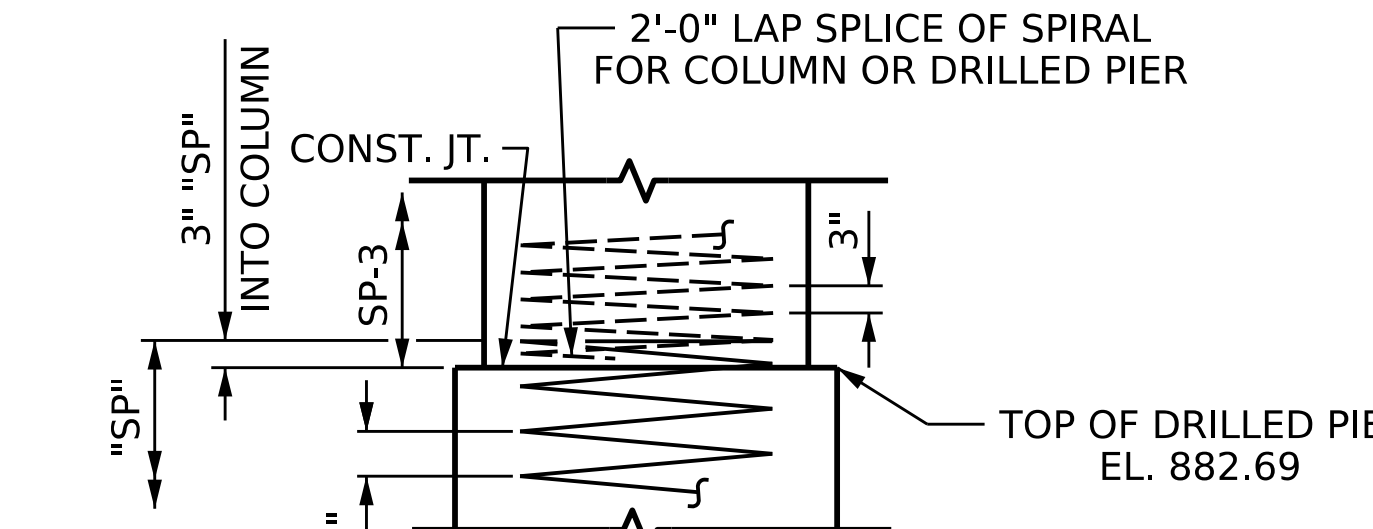


3/21/2023 8:16:26 AM P:\Raleigh\Projects\2019\Division 9 (Davenport)\B-5783\Structures\Drawings\NEW\280168_SB\B-5783_SMU_B1_280168.dgn



* THE "SP-1" & "SP-2" SPIRAL REINFORCING STEEL SHALL BE W21 OR D-31 COLD DRAWN WIRE OR #5 PLAIN OR DEFORMED BAR.

** THE "SP-3" SPIRAL REINFORCING STEEL SHALL BE W20 OR D-20 COLD DRAWN WIRE OR #4 PLAIN OR DEFORMED BAR.



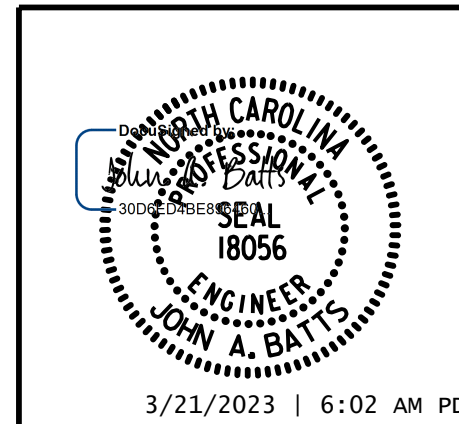
BILL OF MATERIAL					
BENT 1					
BAR	NO.	SIZE	TYPE	LENGTH	WEIGHT
B1	6	#10	STR	47'-9"	1233
B2	10	#5	STR	47'-9"	498
B3	6	#10	1	50'-5"	1302
B4	6	#4	STR	10'-7"	42
B5	6	#4	STR	15'-5"	62
M1	12	#11	STR	24'-4"	1551
M2	24	#11	STR	30'-4"	3868
S1	20	#5	2	12'-8"	264
S2	44	#5	2	14'-0"	642
U1	58	#4	3	6'-10"	265
U2	10	#4	3	6'-8"	45
U3	4	#4	3	7'-6"	20
U4	4	#4	3	7'-7"	20
V1	36	#11	4	22'-9"	4351
SP-1	1	*	5	337'-3"	352
SP-2	2	*	5	452'-5"	944
SP-3	3	**	6	643'-7"	1290
REINFORCING STEEL					14163 LB
SPIRAL COL. REINF. STEEL					2586 LB
CLASS "A" CONCRETE BREAKDOWN					
POUR 2 (COLUMNS)					14.7 CY
POUR 3 (CAP)					38.6 CY
TOTAL					53.3 CY
DRILLED PIERS:					
DRILLED PIER CONCRETE					
POUR 1 (DRILLED PIERS)					22.2 CY

PROJECT NO. B-5783
 DAVIDSON COUNTY
 STATION: 21+53.61 -SBL-

SHEET 2 OF 2

STATE OF NORTH CAROLINA
 DEPARTMENT OF TRANSPORTATION
 RALEIGH
 SUBSTRUCTURE

BENT 1



DRAWN BY: S.D. COOPER DATE: 12-22
 CHECKED BY: J.A. BATTS DATE: 12-22
 DESIGN ENGINEER OF RECORD: J.A. BATTS DATE: 12-22

PLAN OF DRILLED PIERS AND COLUMNS

REVISIONS				SHEET NO.	
NO.	BY:	DATE:	NO.	BY:	DATE:
1			3		
2			4		

DOCUMENT NOT CONSIDERED FINAL UNLESS ALL SIGNATURES COMPLETED

TOTAL SHEETS: 40