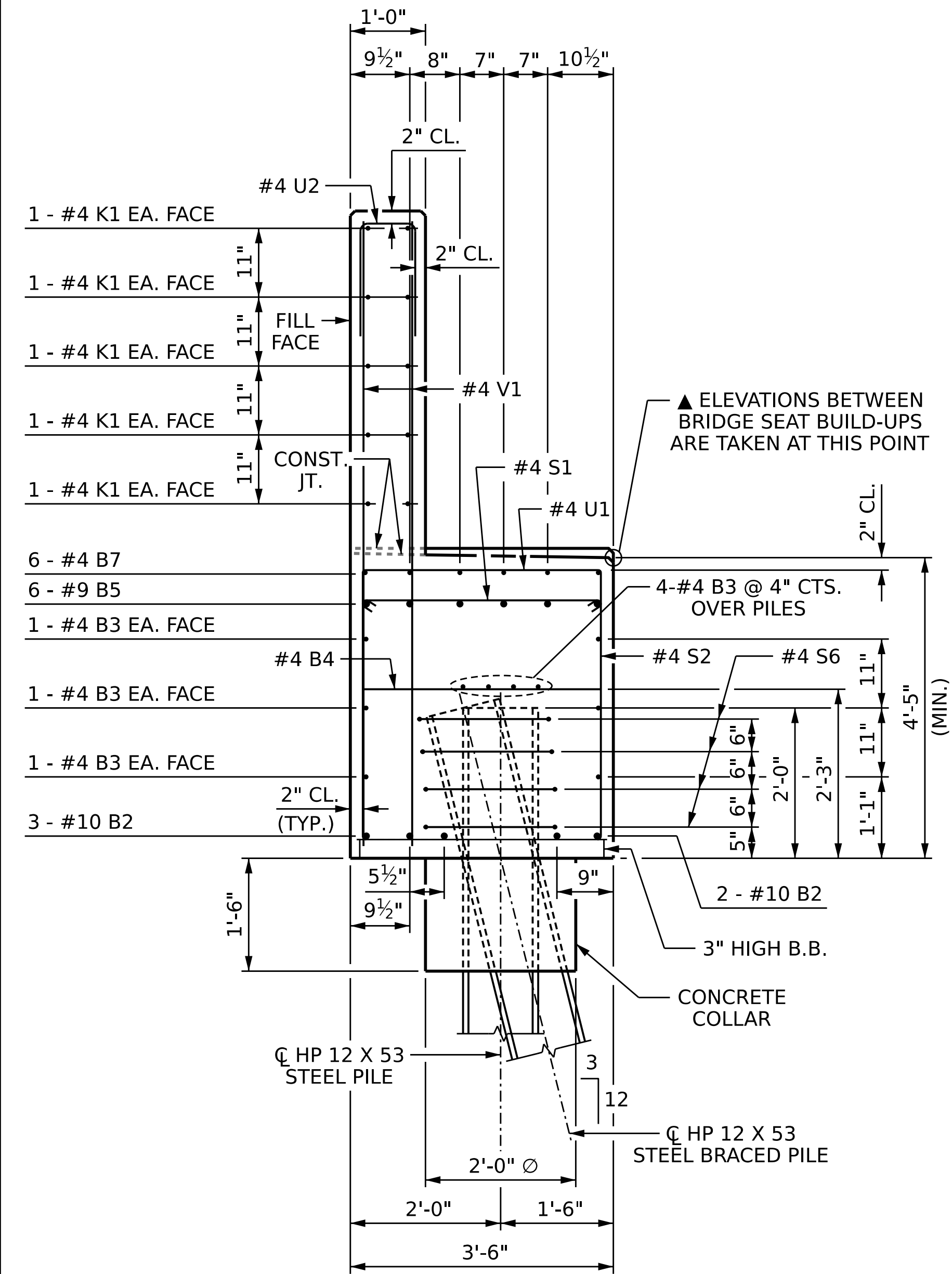
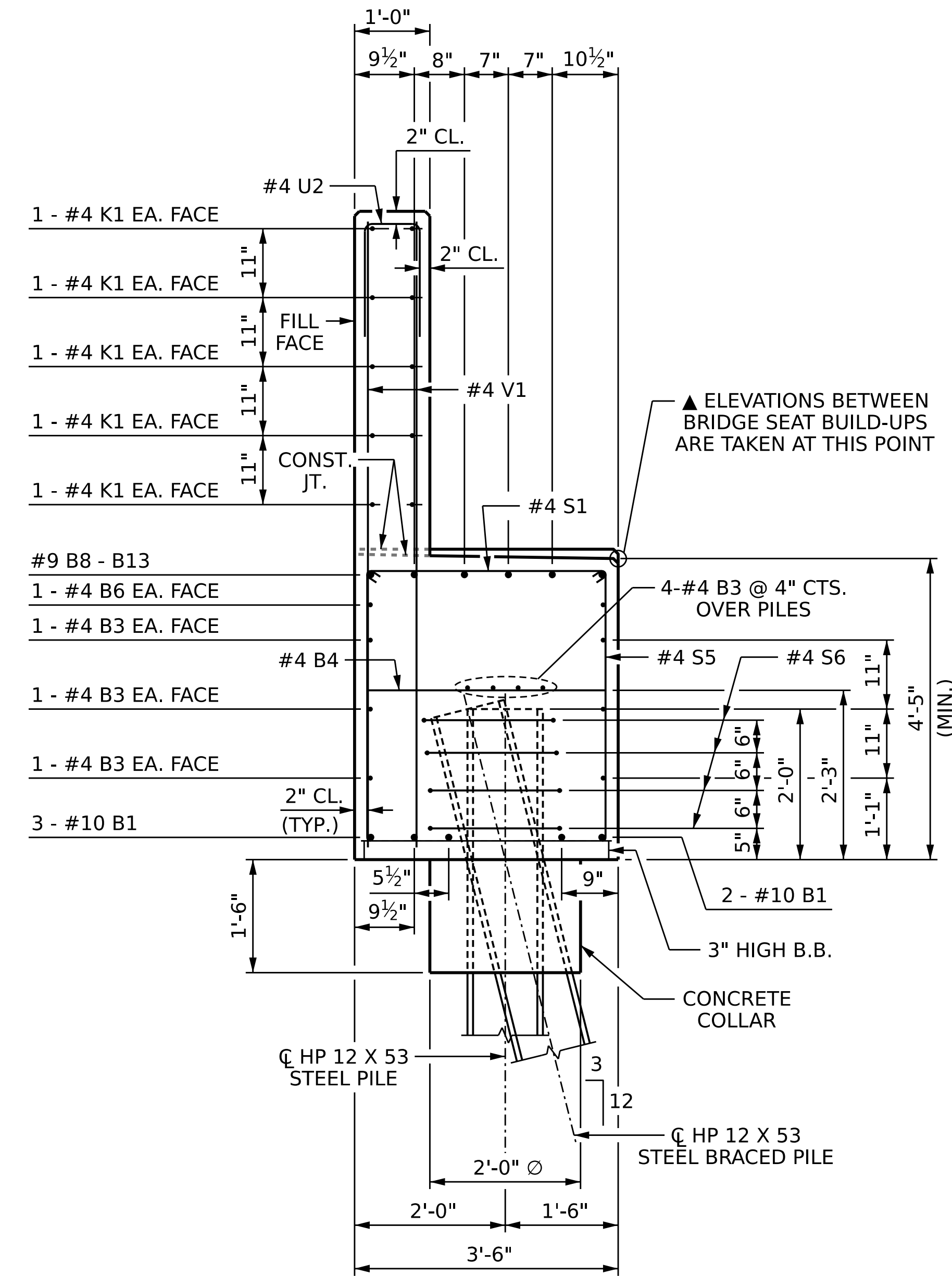


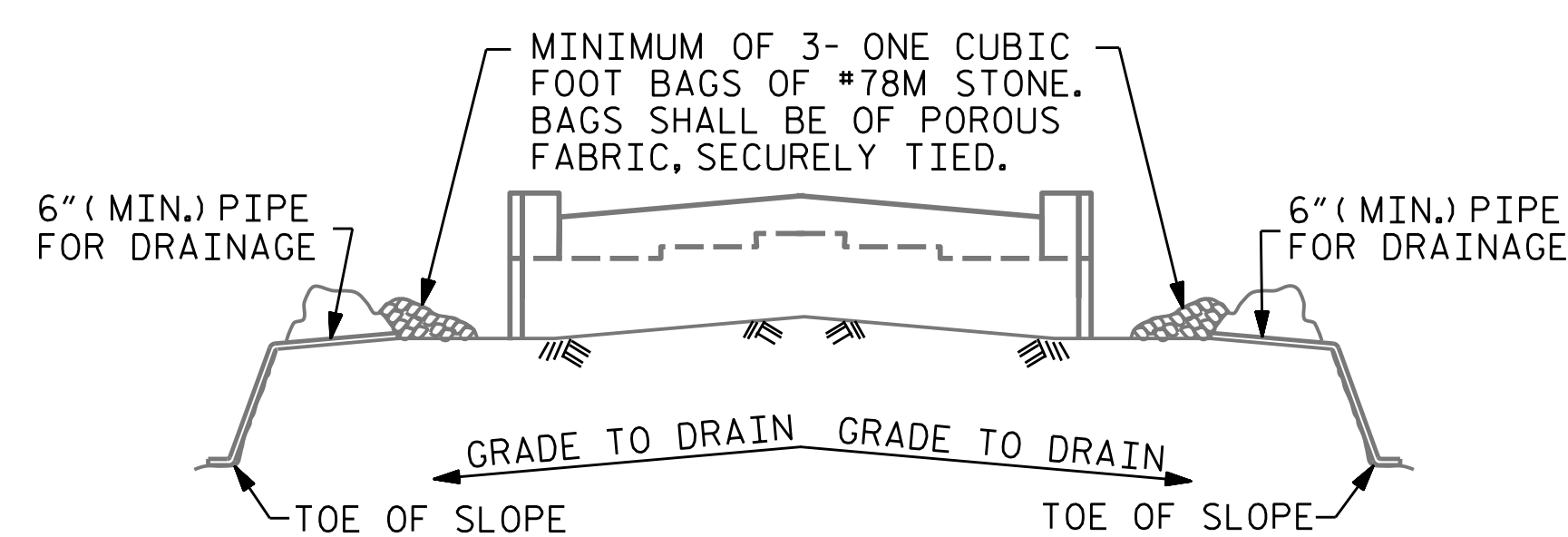
3/21/2023 8:16:24 AM P:\Raleigh\Projects\2019\Division 9 (Davenport)\B-5783\Structures\Drawings\NEW\280168_SB\B-5783_SMU_EI_280168.dgn



SECTION A-A



SECTION B-B



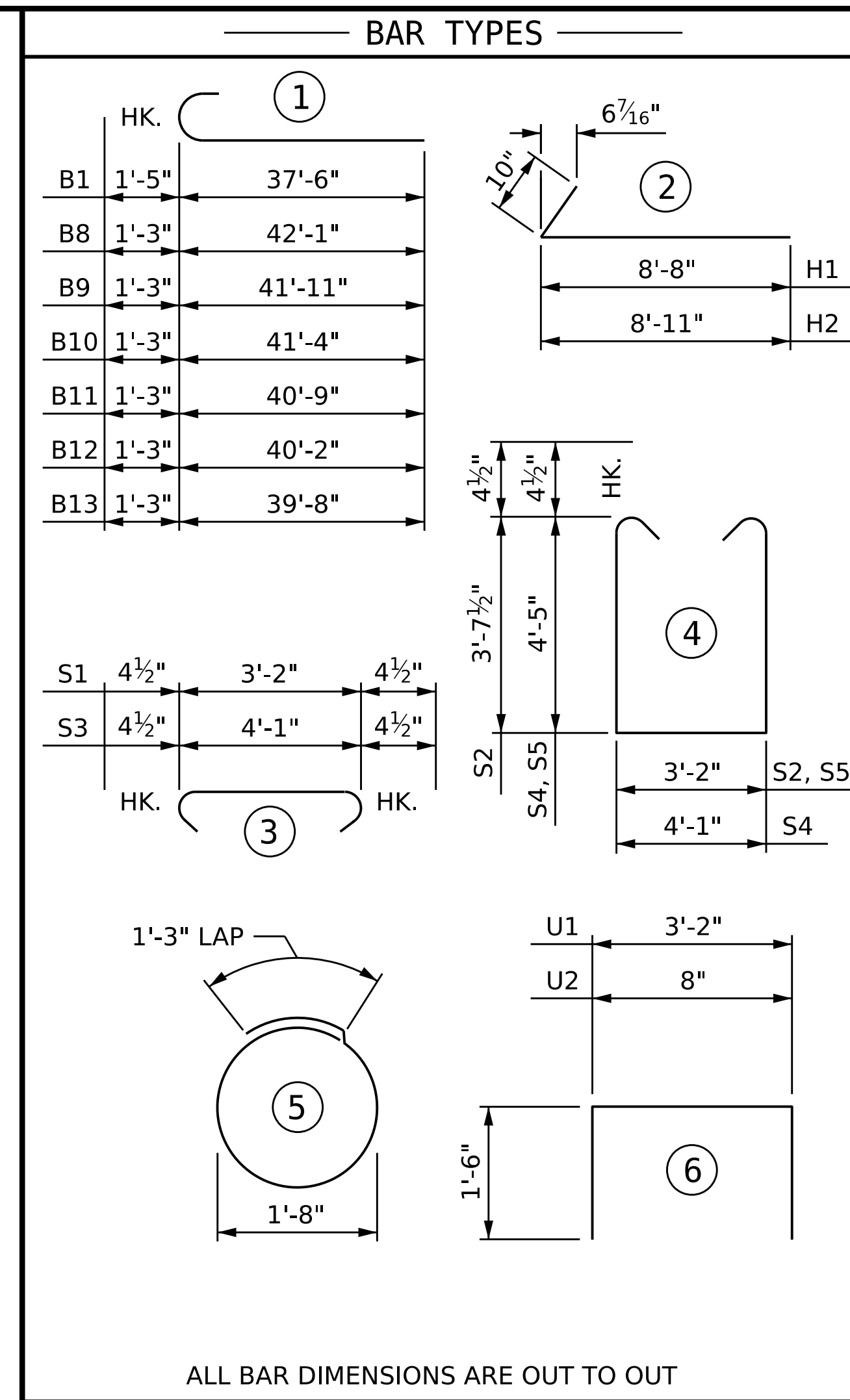
BAGGED STONE AND PIPE SHALL BE PLACED IMMEDIATELY AFTER COMPLETION OF END BENT EXCAVATION. PIPE MAY BE EITHER CONCRETE, CORRUGATED STEEL, CORRUGATED ALUMINUM ALLOY, OR CORRUGATED PLASTIC. PERFORATED PIPE WILL NOT BE ALLOWED.

BAGGED STONE SHALL REMAIN IN PLACE UNTIL THE ENGINEER DIRECTS THAT IT BE REMOVED. THE CONTRACTOR SHALL REMOVE AND DISPOSE OF SILT ACCUMULATIONS AT BAGGED STONE WHEN SO DIRECTED BY THE ENGINEER. BAGS SHALL BE REMOVED AND REPLACED WHENEVER THE ENGINEER DETERMINES THAT THEY HAVE DETERIORATED AND LOST THEIR EFFECTIVENESS.

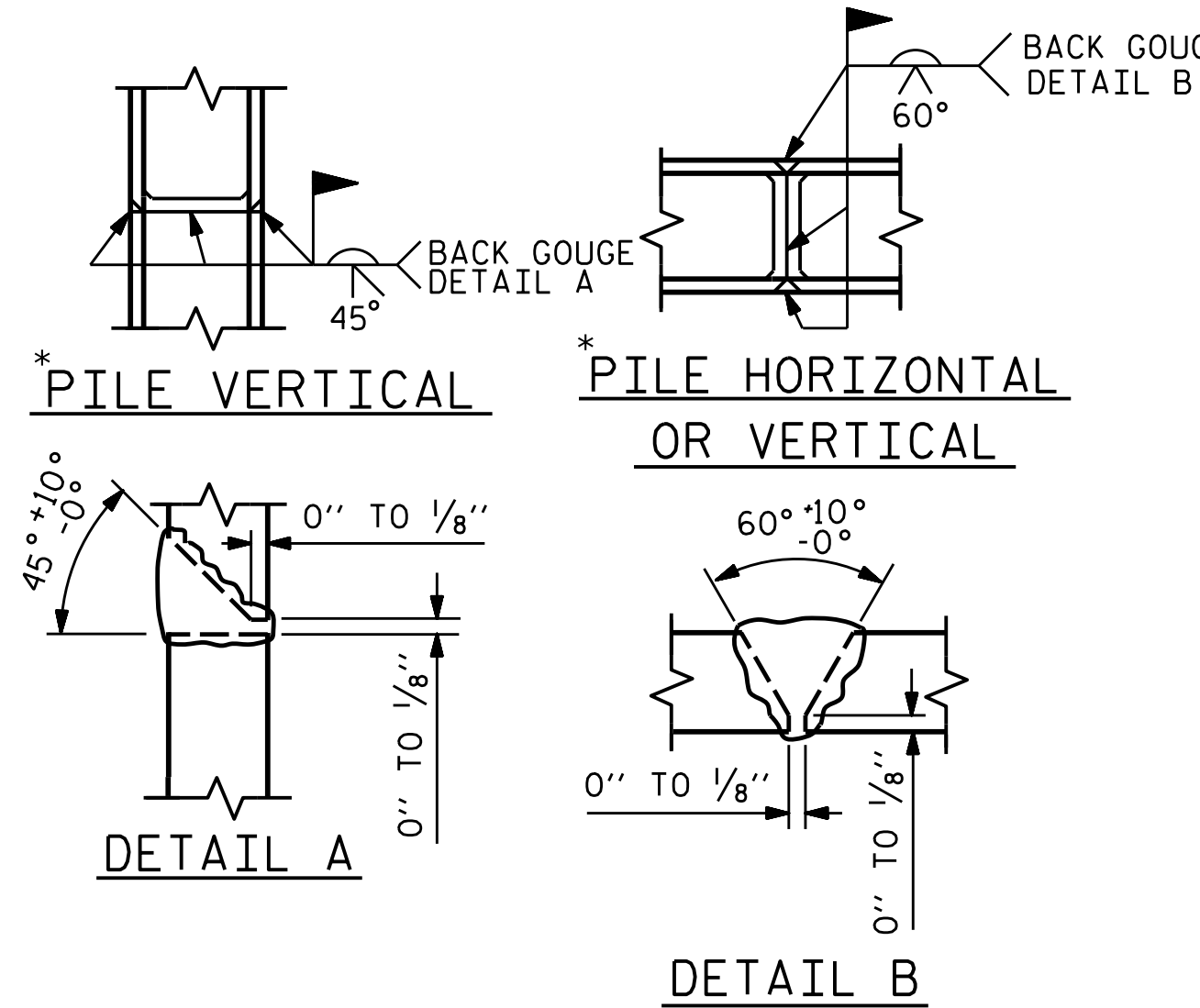
NO SEPARATE PAYMENT WILL BE MADE FOR THIS WORK AND THE ENTIRE COST OF THIS WORK SHALL BE INCLUDED IN THE UNIT CONTRACT PRICE BID FOR THE SEVERAL PAY ITEMS.

TEMPORARY DRAINAGE AT END BENT

DRAWN BY : S.D. COOPER DATE : 12-22
 CHECKED BY : J.A. BATTS DATE : 12-22
 DESIGN ENGINEER OF RECORD : J.A. BATTS DATE : 12-22



ALL BAR DIMENSIONS ARE OUT TO OUT



PILE SPLICE DETAILS

W.W.G.I.
 5640 Dillard Drive, Suite 200
 Cary, NC 27518
 LICENSURE NO. C-4434

STATE OF NORTH CAROLINA
 PROFESSIONAL ENGINEER
 J. A. BATTS
 18056

3/21/2023 | 6:02 AM PDT

BILL OF MATERIAL					
END BENT 1					
BAR	NO.	SIZE	TYPE	LENGTH	WEIGHT
B1	5	#10	1	38'-11"	837
B2	5	#10	STR	31'-2"	671
B3	20	#4	STR	33'-6"	448
B4	18	#4	STR	3'-2"	38
B5	6	#9	STR	29'-2"	595
B6	2	#4	STR	37'-4"	50
B7	12	#4	STR	10'-9"	86
B8	1	#9	1	43'-4"	147
B9	1	#9	1	43'-2"	147
B10	1	#9	1	42'-7"	145
B11	1	#9	1	42'-0"	143
B12	1	#9	1	41'-5"	141
B13	1	#9	1	40'-11"	139
H1	15	#5	2	9'-6"	149
H2	15	#5	2	9'-9"	153
K1	20	#4	STR	32'-6"	434
K2	4	#4	STR	3'-2"	8
K3	4	#4	STR	6'-0"	16
S1	66	#4	3	3'-11"	173
S2	24	#4	4	11'-2"	179
S3	2	#4	3	4'-10"	6
S4	2	#4	4	13'-8"	18
S5	42	#4	4	12'-9"	358
S6	28	#4	5	6'-6"	122
U1	14	#4	6	6'-2"	58
U2	54	#4	6	3'-8"	132
V1	108	#4	STR	8'-2"	589
V2	29	#5	STR	9'-10"	297
V3	12	#4	STR	9'-6"	76
TOTAL REINFORCING STEEL					6355 LB
CLASS A CONCRETE BREAKDOWN					
POUR 1 (CAP & LOWER WING)					41.0 CY
POUR 2 (BACKWALL & UPPER WING)					11.0 CY
TOTAL CLASS A CONCRETE					52.0 CY

PROJECT NO. **B-5783**
DAVIDSON COUNTY
 STATION: **21+53.61 -SBL-**

SHEET 3 OF 3

STATE OF NORTH CAROLINA
 DEPARTMENT OF TRANSPORTATION
 RALEIGH
 SUBSTRUCTURE

END BENT 1

REVISIONS					
NO.	BY:	DATE:	NO.	BY:	DATE:
1			3		
2			4		

SHEET NO. **S2-29**
 TOTAL SHEETS **40**

DOCUMENT NOT CONSIDERED FINAL
 UNLESS ALL SIGNATURES COMPLETED