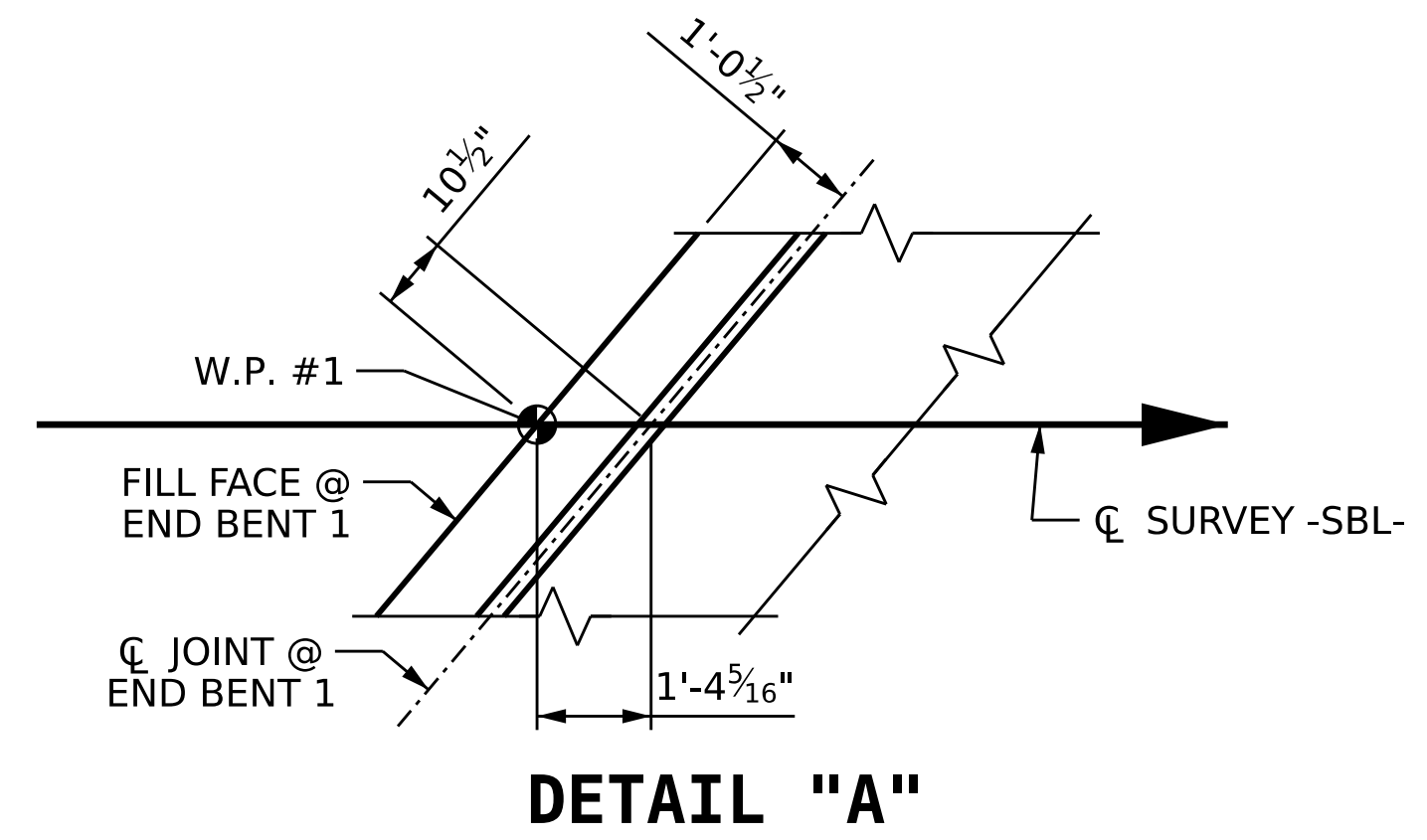
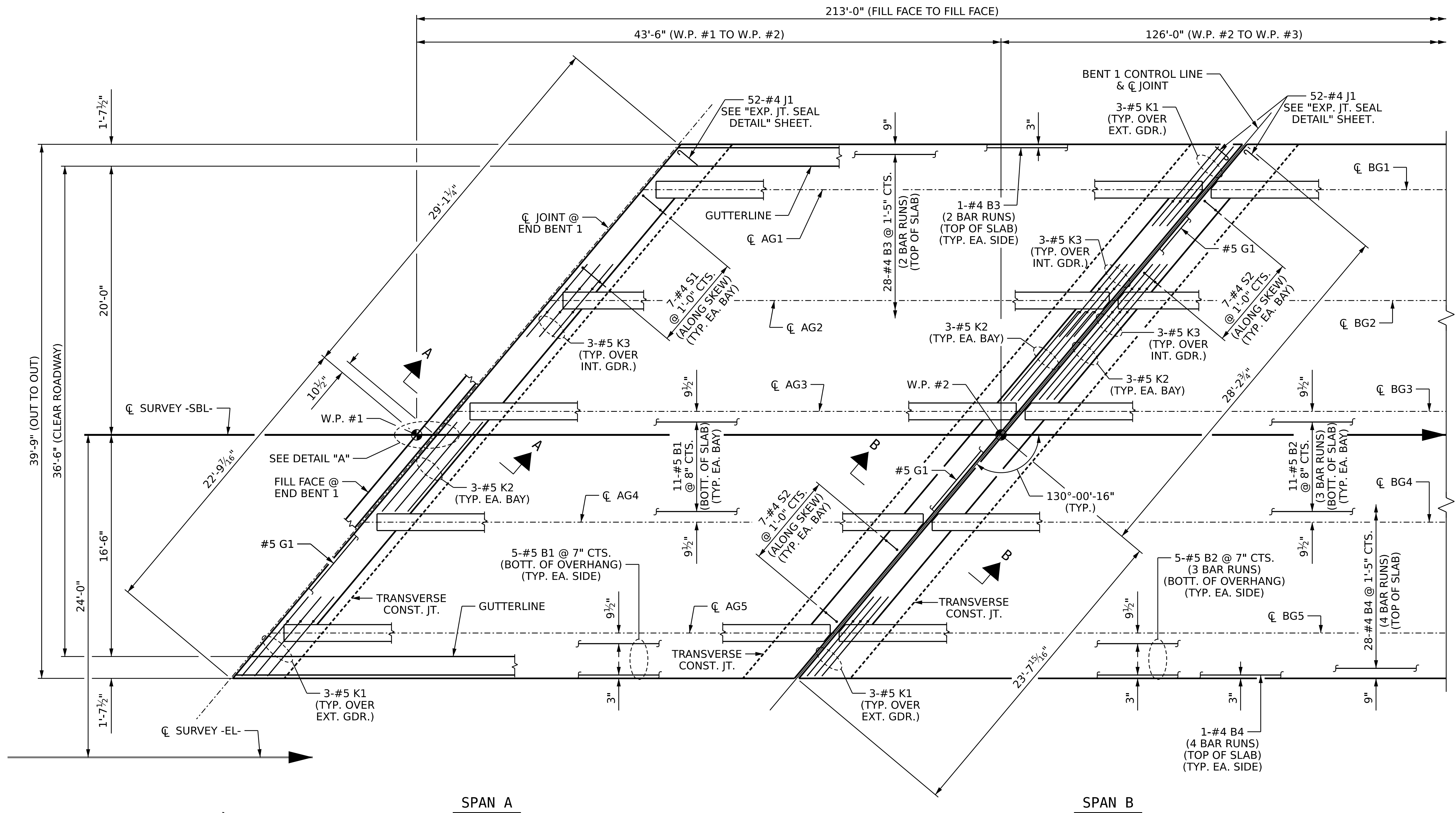


3/21/2023 8:16:02 AM P:\ Raleigh\Projects\2019\Division 9 (Davenport)\B-5783\Structures\Drawings\NEW\Final\280168\_SB\B-5783\_SMU\_PS\_280168.dgn



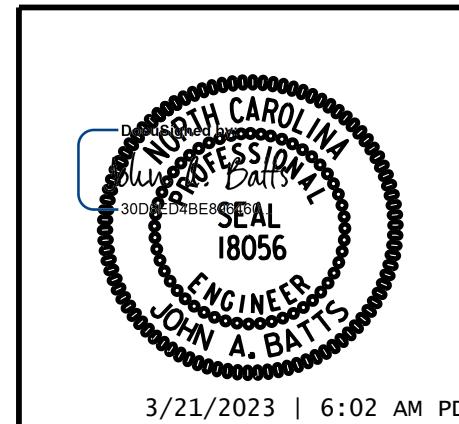
**NOTES:**  
 SEE "TYPICAL SECTION" SHEET 2 OF 2 FOR SECTION A-A AND SECTION B-B.  
 FOR LOCATION OF INTERMEDIATE DIAPHRAGMS, SEE "FRAMING PLAN" SHEET.  
 FOR POURING SEQUENCE AND LOCATION OF TRANSVERSE CONSTRUCTION JOINTS, SEE "BILL OF MATERIAL" SHEET 1 OF 2.  
 THE QUANTITY OF #4 J1 BARS ON THE BILL OF MATERIAL IS BASED ON 1'-0" CENTERS. J1 BARS SHALL BE PLACED AT EACH VERTICAL STUD ANCHOR BOLT. IN THE EVENT THAT THE NUMBER OF VERTICAL STUD ANCHORS EXCEEDS THE NUMBER OF J1 BARS SPECIFIED, ADDITIONAL J1 BARS WILL NOT BE REQUIRED.

PROJECT NO. B-5783  
DAVIDSON COUNTY  
 STATION: 21+53.61 -SBL-

SHEET 1 OF 2

STATE OF NORTH CAROLINA  
 DEPARTMENT OF TRANSPORTATION  
 RALEIGH  
 SUPERSTRUCTURE

**PLAN OF SPANS**



DRAWN BY : T. BANKOVICH DATE : 12-22  
 CHECKED BY : J.A. BATTS DATE : 12-22  
 DESIGN ENGINEER OF RECORD : J.A. BATTS DATE : 12-22

REVISIONS						SHEET NO.
NO.	BY:	DATE:	NO.	BY:	DATE:	S2-08
1			3			TOTAL SHEETS
2			4			40

DOCUMENT NOT CONSIDERED FINAL  
 UNLESS ALL SIGNATURES COMPLETED