

(+14.2986%      (-)2.2638%

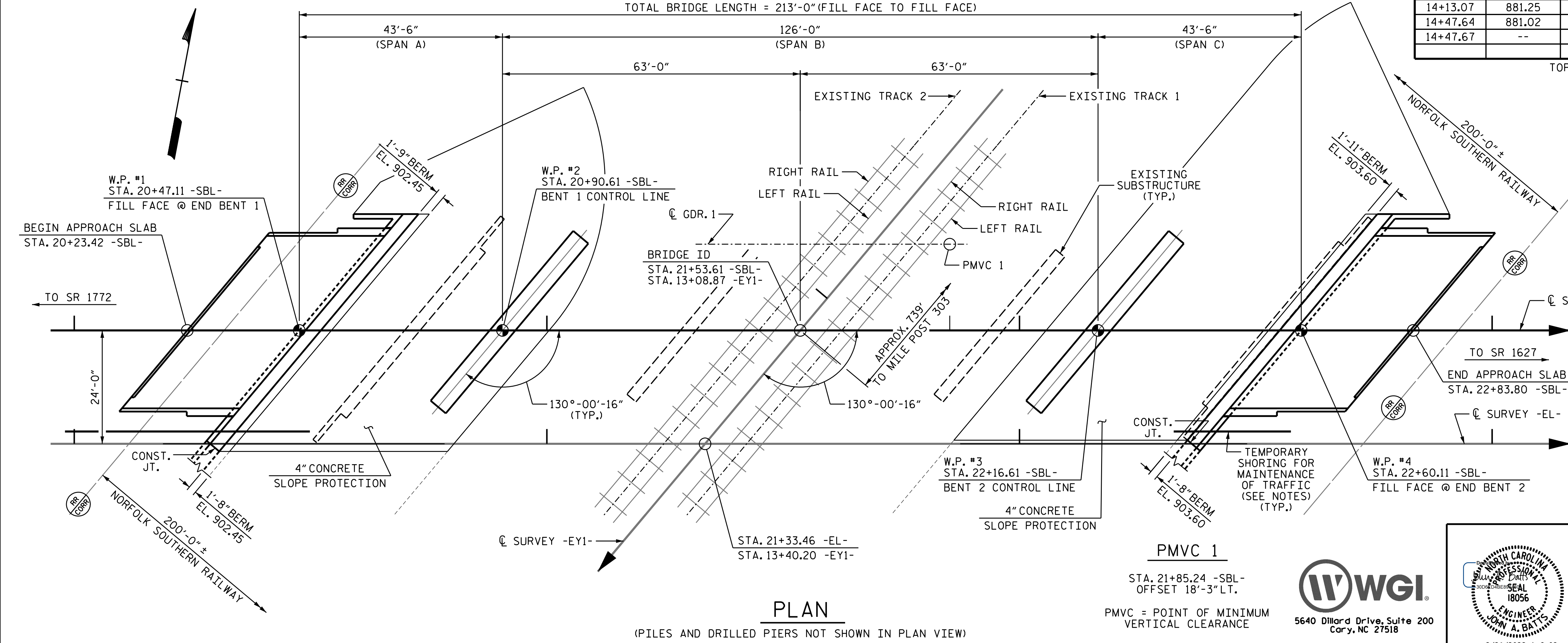
PVI STA. 20+42.00  
 EL. = 919.93  
 VC = 992.00'

GRADE DATA -SBL-

**TOP OF RAIL ELEVATIONS**

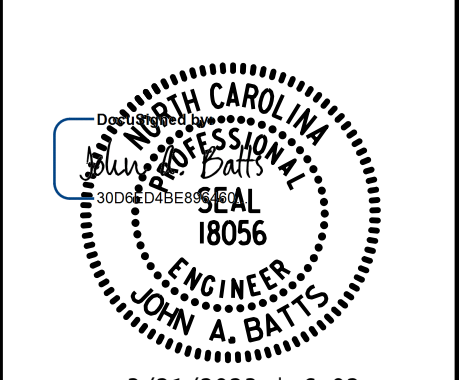
STA. -EY1-	TRACK 2		STA. -EY1-	TRACK 1	
	LEFT RAIL	RIGHT RAIL		LEFT RAIL	RIGHT RAIL
12+52.23	--	882.39	12+52.32	--	882.62
12+52.24	882.39	--	12+52.39	882.63	--
13+04.91	--	882.00	13+01.11	882.22	--
13+04.95	882.01	--	13+05.16	--	882.16
13+10.26	--	881.97	13+05.25	882.19	--
13+18.56	881.90	--	13+17.89	882.07	--
13+63.01	--	881.56	13+18.01	--	882.06
13+63.08	881.57	--	13+63.44	--	881.66
14+13.06	--	881.24	13+63.51	881.66	--
14+13.07	881.25	--	14+16.37	--	881.27
14+47.64	881.02	--	14+22.61	881.25	--
14+47.67	--	881.00	14+47.64	--	881.03
			14+64.01	880.94	--

TOP OF RAIL SURVEY 6-16-2020



PROJECT NO. **B-5783**  
 DAVIDSON COUNTY  
 STATION: **21+53.61 -SBL-  
 13+08.87 -EY1-**  
 SHEET 1 OF 4 REPLACES BRIDGE #280168  
 MILE POST 303.14

STATE OF NORTH CAROLINA  
 DEPARTMENT OF TRANSPORTATION  
 RALEIGH  
**GENERAL DRAWING**  
 FOR BRIDGE ON  
 I-85BUS./US 29/US 70 (-SBL-)  
 OVER NORFOLK SOUTHERN RAILWAY  
 BETWEEN SR 1772 AND SR 1627



DRAWN BY: **S.D. COOPER** DATE: **12-22**  
 CHECKED BY: **J.A. BATTS** DATE: **12-22**  
 DESIGN ENGINEER OF RECORD: **J.A. BATTS** DATE: **12-22**

LICENSURE NO. C-4434  
**DOCUMENT NOT CONSIDERED FINAL  
 UNLESS ALL SIGNATURES COMPLETED**

REVISIONS

NO.	BY:	DATE:	NO.	BY:	DATE:
1			3		
2			4		

SHEET NO. **S2-01**  
 TOTAL SHEETS **40**

3/21/2023 8:15:54 AM P:\Raleigh\Projects\2019\Division 9 (Davenport)\B-5783\Structures\Drawings\NEW\280168\_SB-5783\_SML\_GD\_280168.dgn