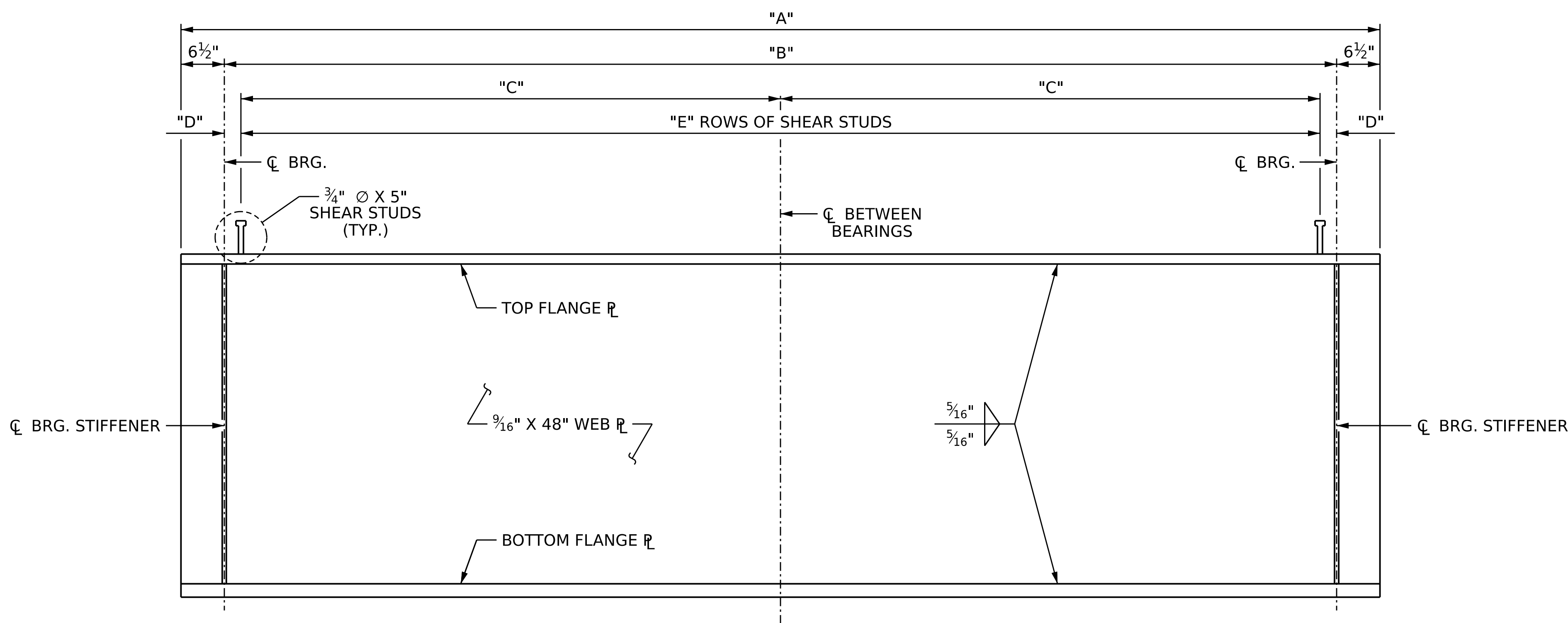


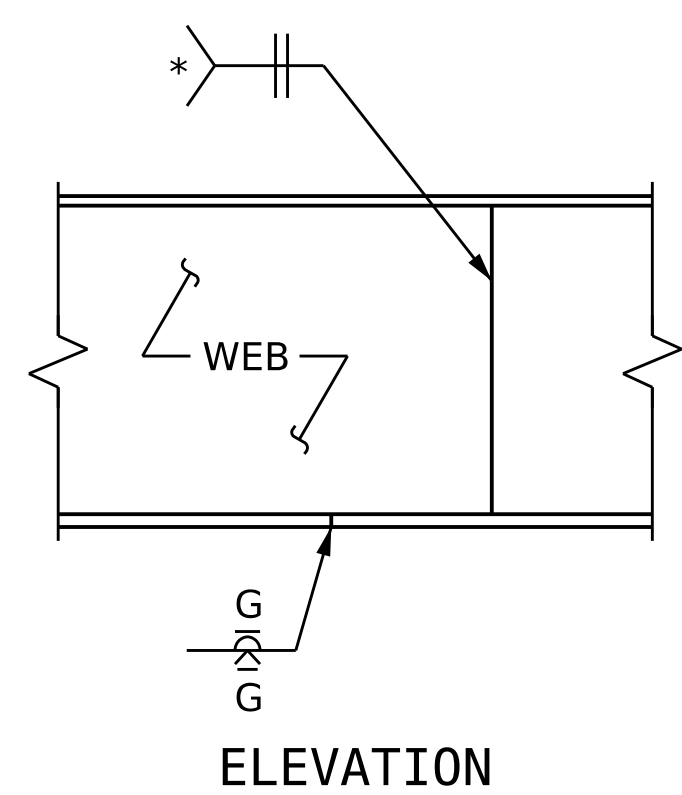
3/21/2023 8:05:29 AM P:\Raleigh\Projects\2019\Division 9 (Davenport)\B-5783\Structures\Drawings\NEW\Final\280164\_NB\B-5783\_SMU\_SS\_280164.dgn



**ELEVATION OF GIRDER**

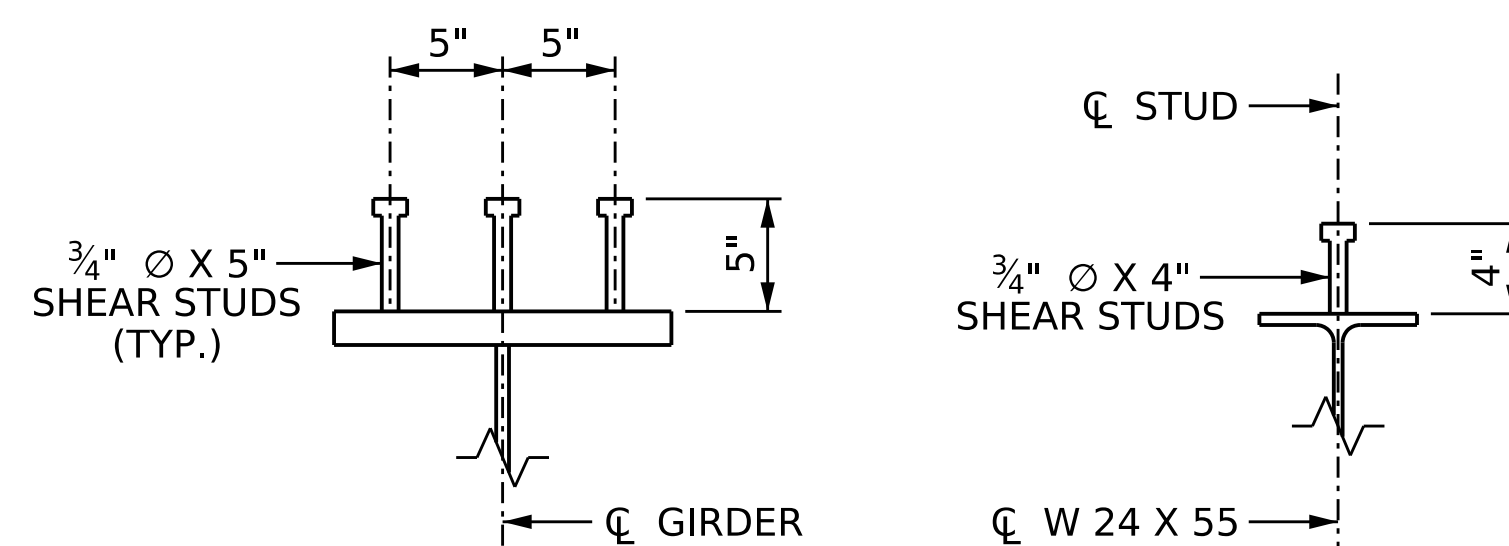
(FOR CLARITY, CONNECTOR PLATES FOR INTERMEDIATE DIAPHRAGMS NOT SHOWN, FOR PLACEMENT SEE "SUPERSTRUCTURE FRAMING PLAN" SHEETS.)  
(SEE "GIRDER DIMENSION TABLE" FOR DIMENSIONS)

GIRDER DIMENSION TABLE							
SPAN	"A"	"B"	"C"	"D"	"E"	TOP FLANGE	BOTTOM FLANGE
A	40'-8"	39'-7"	19'-8 1/2"	1"	87 ROWS @ 5 1/2" CTS. (3 STUDS PER ROW)	1" X 15" PL	1 1/2" X 15"
B	125'-4"	124'-3"	62'-1"	1/2"	299 ROWS @ 5" CTS. (3 STUDS PER ROW)	1 1/2" X 15" PL	2" X 20"
C	40'-8"	39'-7"	19'-8 1/2"	1"	87 ROWS @ 5 1/2" CTS. (3 STUDS PER ROW)	1" X 15" PL	1 1/2" X 15"

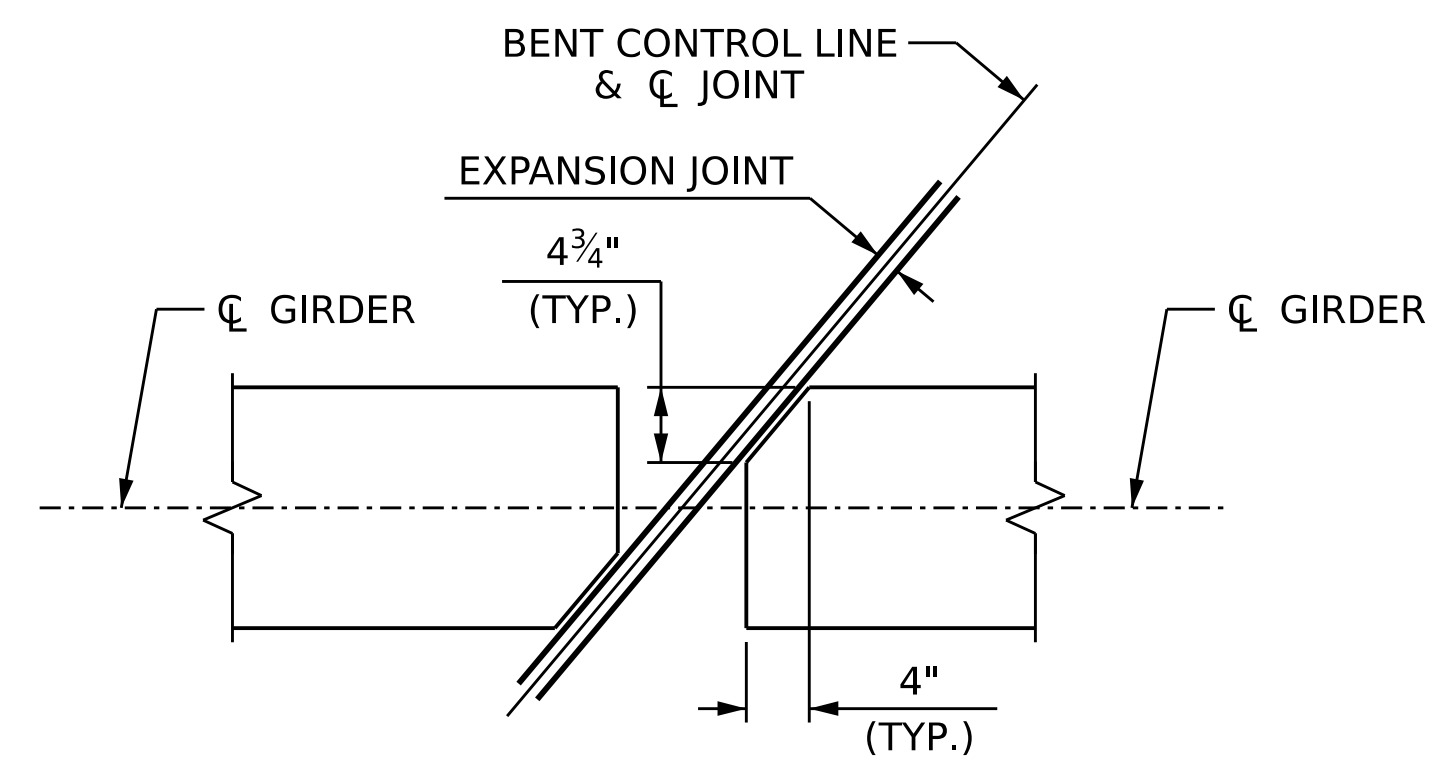


**TYPICAL FLANGE AND WEB BUTT JOINT**

\* GRIND SMOOTH AND FLUSH ON OUTER FACE OF EXTERIOR GIRDERS



**SHEAR STUD DETAILS**



**TOP FLANGE CLIP AT EXPANSION JOINT**

**NOTES:**

ALL STRUCTURAL STEEL SHALL BE AASHTO M270 GRADE 50W AND PAINTED IN ACCORDANCE WITH SYSTEM 5 OR SYSTEM 6 OF THE STRUCTURAL STEEL SHOP COATINGS PROGRAM AND SECTION 442-8 OF THE STANDARD SPECIFICATIONS UNLESS OTHERWISE NOTED ON THE PLANS.

ALL DIMENSIONS SHOWN ARE HORIZONTAL OR VERTICAL, UNLESS OTHERWISE NOTED.

ALL FIELD CONNECTIONS TO BE 7/8" DIA. HIGH STRENGTH BOLTS UNLESS OTHERWISE NOTED.

BEARING STIFFENERS ARE TO BE PLACED NORMAL TO BE THE WEB OF THE GIRDER AND SHALL BE PLUMB.

A CHARPY V-NOTCH TEST IS REQUIRED FOR WEB PLATES AND BOTTOM FLANGE PLATES FOR ALL GIRDERS AND IN ACCORDANCE WITH ARTICLE 1072-7 OF THE STANDARD SPECIFICATIONS.

PERMITTED FLANGE AND WEB SHOP SPLICES SHALL NOT BE LOCATED WITHIN 15 FEET OF MAXIMUM DEAD LOAD DEFLECTION. KEEP 2 FEET MINIMUM BETWEEN WEB AND FLANGE SHOP SPLICES, KEEP 6" MINIMUM BETWEEN CONNECTOR PLATE WELDS AND WEB OR FLANGE SHOP SPLICES.

STUDS ON GIRDERS MAY BE SHIFTED UP TO 1" IF NECESSARY TO CLEAR FLANGE SPLICE WELD.

TENSION ON THE AASHTO A325 BOLTS SHALL BE CALIBRATED USING DIRECT TENSION INDICATOR WASHERS IN ACCORDANCE WITH ARTICLE 440-8 OF THE STANDARD SPECIFICATIONS.

FABRICATORS SHALL DETAIL DIAPHRAGM MEMBERS AND CONNECTIONS FOR FULL DEAD LOAD FIT UP, GIRDERS SHALL BE PLUMB AFTER THE FULL AMOUNT OF DEAD LOAD IS APPLIED.

PROJECT NO. B-5783  
DAVIDSON COUNTY  
 STATION: 21+13.32 -NBL-

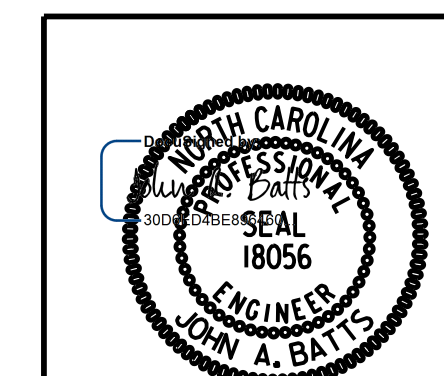
SHEET 1 OF 3

STATE OF NORTH CAROLINA  
 DEPARTMENT OF TRANSPORTATION  
 RALEIGH  
 SUPERSTRUCTURE

**STRUCTURAL STEEL DETAILS**

REVISIONS

NO.	BY:	DATE:	NO.	BY:	DATE:	SHEET NO.
1			3			S1-13
2			4			TOTAL SHEETS 40



LICENSURE NO. C-4434

DOCUMENT NOT CONSIDERED FINAL UNLESS ALL SIGNATURES COMPLETED

DRAWN BY : T. BANKOVICH DATE : 12-22  
 CHECKED BY : J.A. BATTS DATE : 12-22  
 DESIGN ENGINEER OF RECORD: J.A. BATTS DATE : 12-22