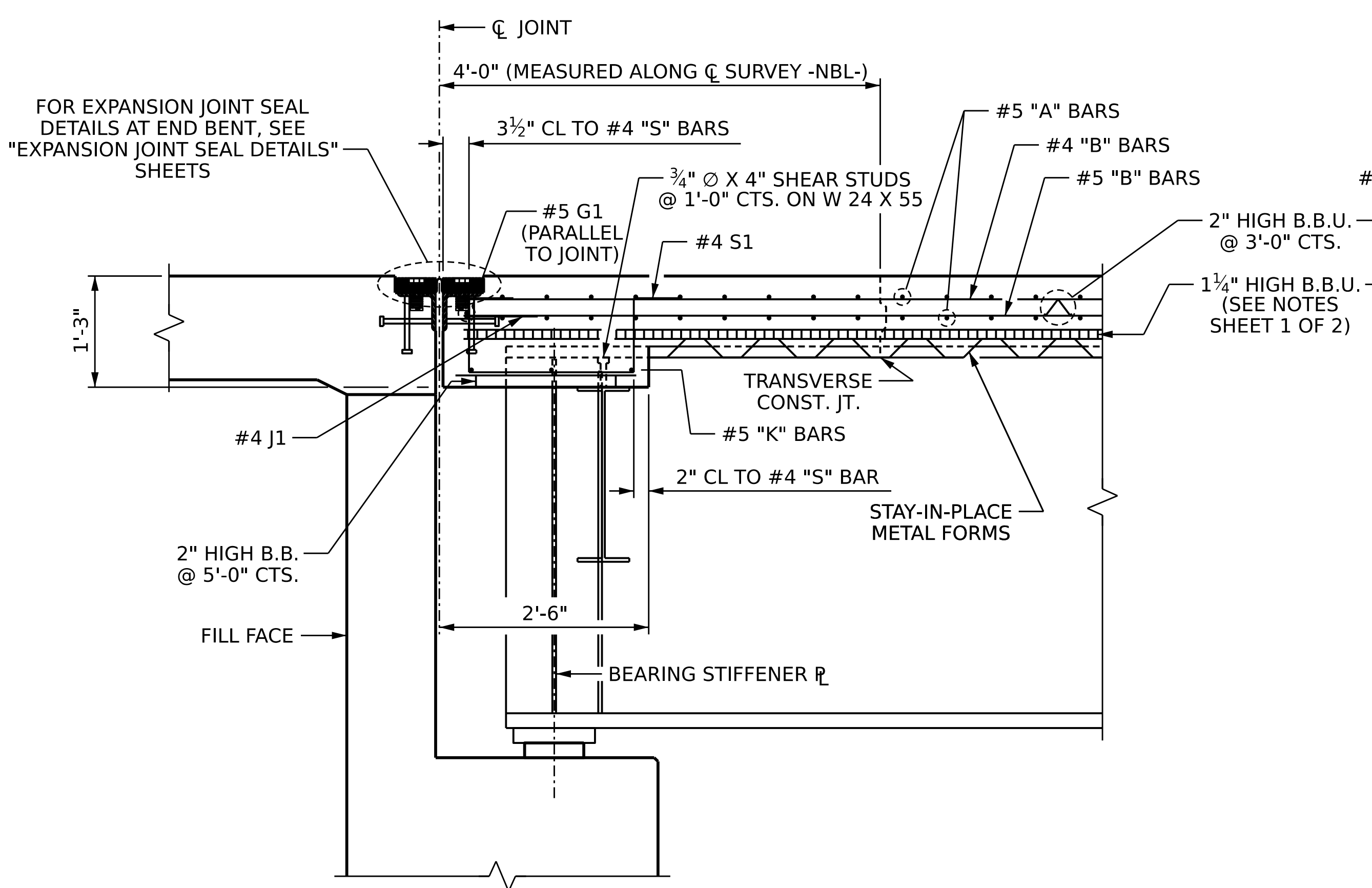


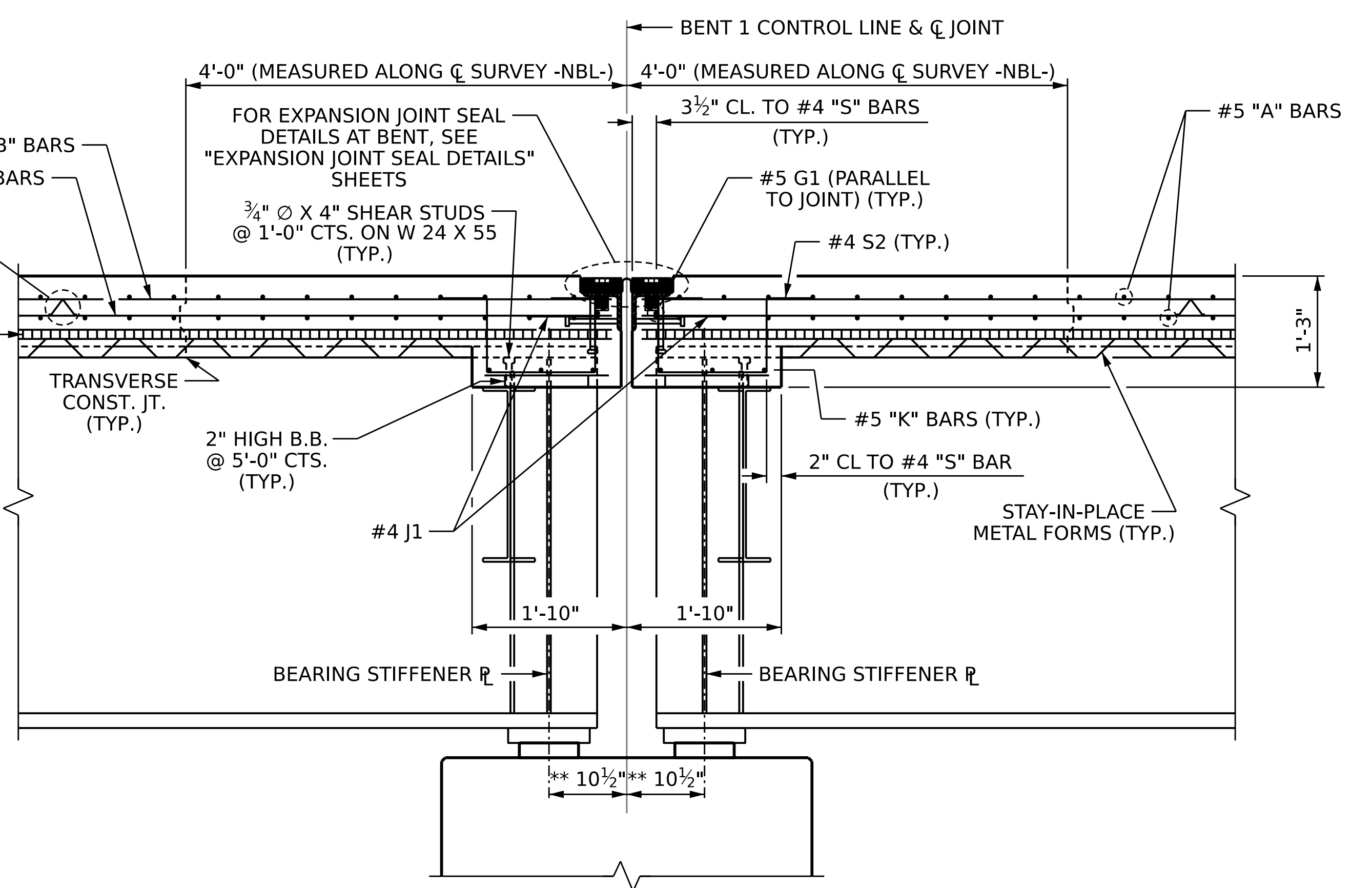
3/21/2023 8:05:22 AM P:\Raleigh\Projects\2019\Division 9 (Davenport)\B-5783\Structures\Drawings\NEW\280164_NB\B-5783_SMU_Ts_280164.dgn



SECTION A-A

(DIMENSIONS ARE NORMAL TO THE END BENT UNLESS OTHERWISE NOTED)
(END BENT 1 SHOWN, END BENT 2 SIMILAR)

* #5 G1 BAR MAY BE SHIFTED SLIGHTLY, AS NECESSARY, TO CLEAR REINFORCING STEEL AND STUDS.

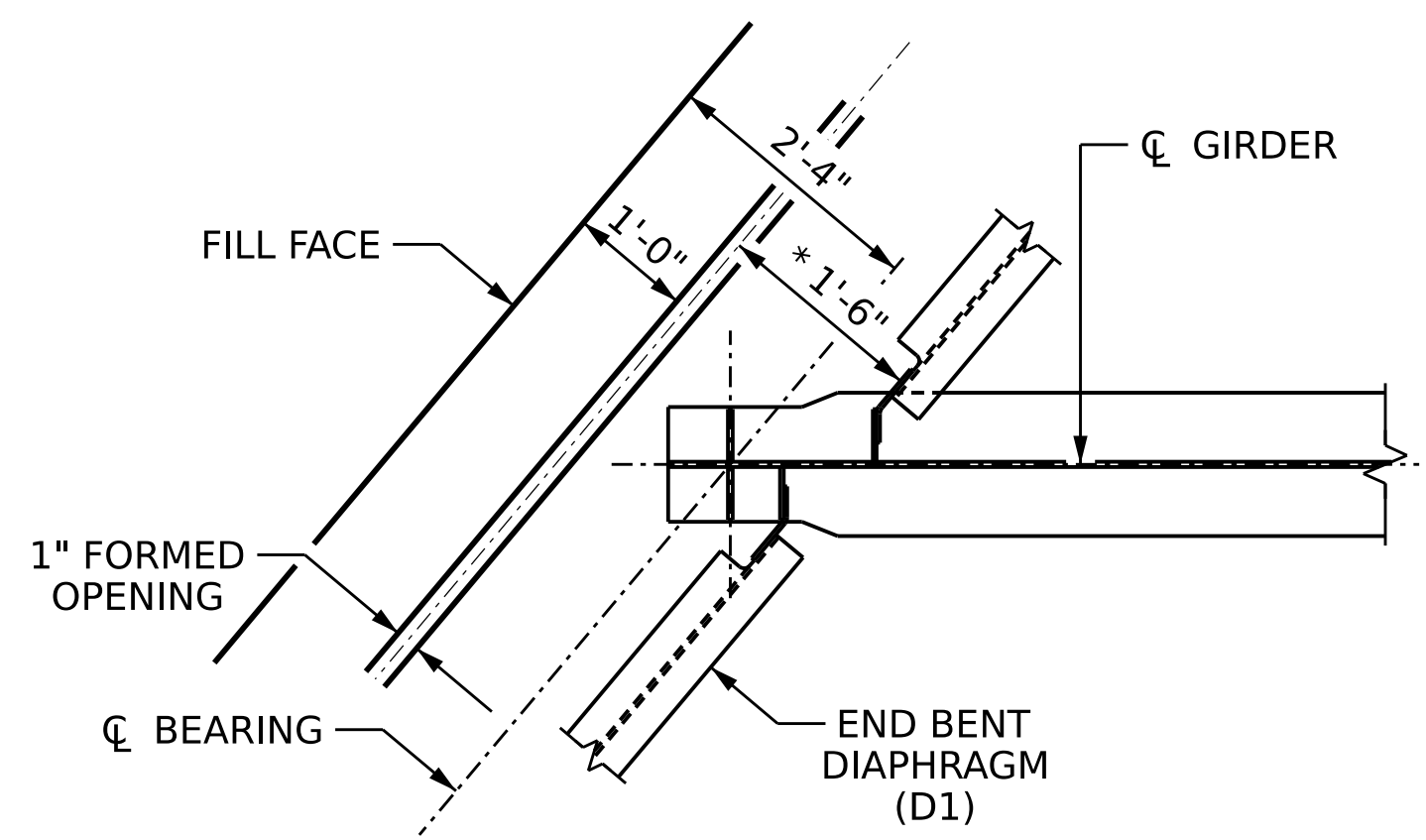


SECTION B-B

(DIMENSIONS ARE NORMAL TO THE BENT CONTROL LINE UNLESS OTHERWISE NOTED)
(BENT 1 SHOWN, BENT 2 SIMILAR)

* #5 G1 BARS MAY BE SHIFTED SLIGHTLY, AS NECESSARY, TO CLEAR REINFORCING STEEL AND STUDS.

** DIMENSIONS MEASURED ALONG \bar{C} GIRDER.



PLAN OF GIRDER AT END BENT JOINT

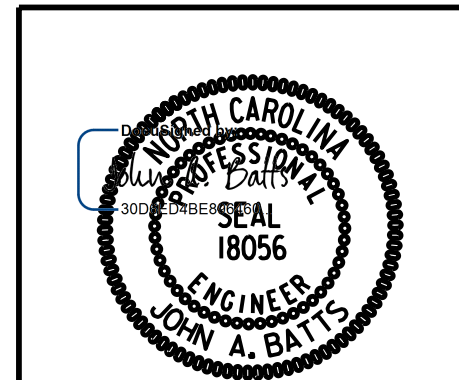
* OFFSET DISTANCE TO BENT GUSSET PLATE.

PROJECT NO. B-5783
DAVIDSON COUNTY
STATION: 21+13.32 -NBL-

SHEET 2 OF 2

STATE OF NORTH CAROLINA
DEPARTMENT OF TRANSPORTATION
RALEIGH
SUPERSTRUCTURE

TYPICAL SECTION



DRAWN BY :	T. BANKOVICH	DATE :	12-22
CHECKED BY :	J.A. BATTS	DATE :	12-22
DESIGN ENGINEER OF RECORD:	J.A. BATTS	DATE :	12-22

REVISIONS				SHEET NO.
NO.	BY:	DATE:	NO.	DATE:
1			3	
2			4	

SHEET NO. **S1-07**
TOTAL SHEETS **40**

**DOCUMENT NOT CONSIDERED FINAL
UNLESS ALL SIGNATURES COMPLETED**