

GRADE DATA -NBL-

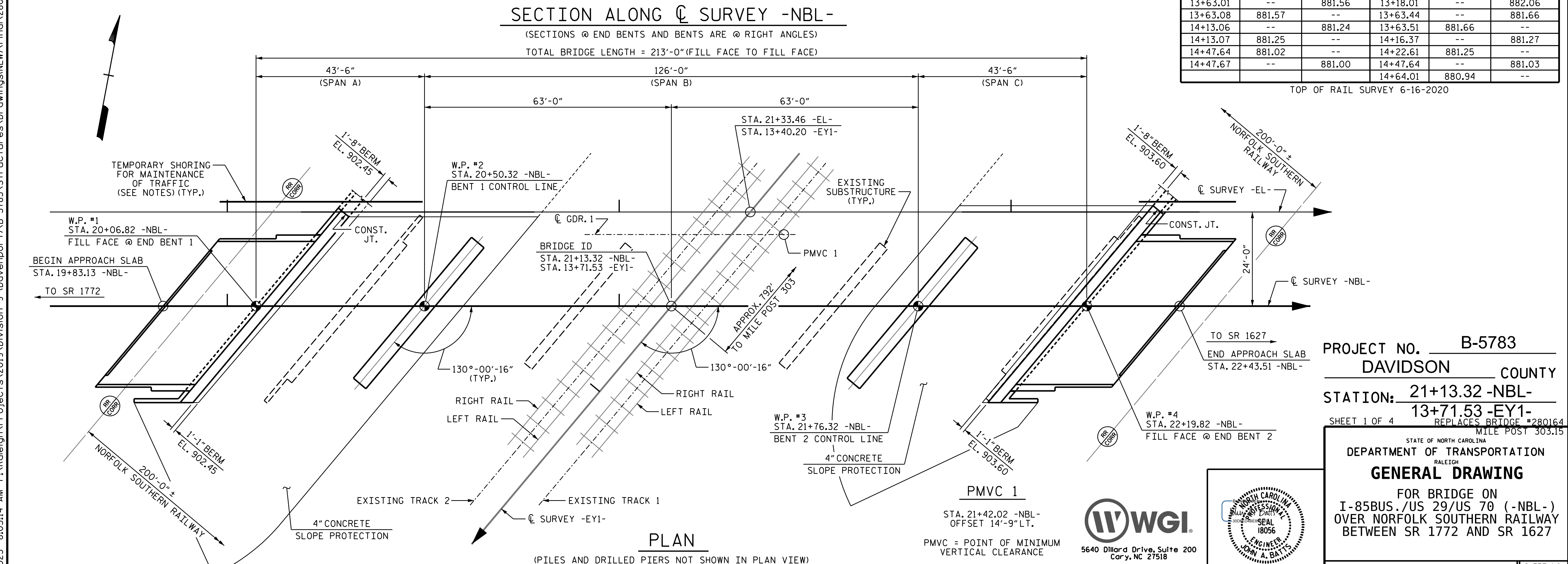
(+)4.2986% (-)2.2654%

PVI STA. 20+42.00
 EL. = 919.93
 VC = 992.00'

TOP OF RAIL ELEVATIONS

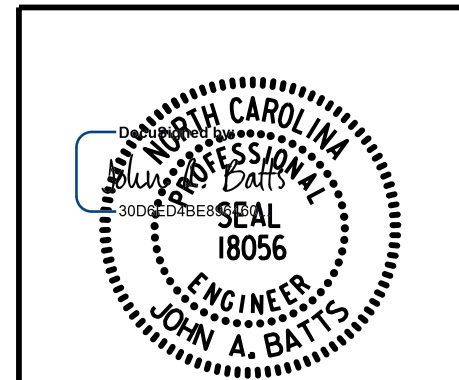
STA. -EY1-	TRACK 2		STA. -EY1-	TRACK 1	
	LEFT RAIL	RIGHT RAIL		LEFT RAIL	RIGHT RAIL
12+52.23	--	882.39	12+52.32	--	882.62
12+52.24	882.39	--	12+52.39	882.63	--
13+04.91	--	882.00	13+01.11	882.22	--
13+04.95	882.01	--	13+05.16	--	882.16
13+10.26	--	881.97	13+05.25	882.19	--
13+18.56	881.90	--	13+17.89	882.07	--
13+63.01	--	881.56	13+18.01	--	882.06
13+63.08	881.57	--	13+63.44	--	881.66
14+13.06	--	881.24	13+63.51	881.66	--
14+13.07	881.25	--	14+16.37	--	881.27
14+47.64	881.02	--	14+22.61	881.25	--
14+47.67	--	881.00	14+47.64	--	881.03
			14+64.01	880.94	--

TOP OF RAIL SURVEY 6-16-2020



PROJECT NO. **B-5783**
DAVIDSON COUNTY
 STATION: **21+13.32 -NBL-**
13+71.53 -EY1-
 SHEET 1 OF 4 REPLACES BRIDGE #280164
 MILE POST 303.15

STATE OF NORTH CAROLINA
 DEPARTMENT OF TRANSPORTATION
 RALEIGH
GENERAL DRAWING
 FOR BRIDGE ON
 I-85BUS./US 29/US 70 (-NBL-)
 OVER NORFOLK SOUTHERN RAILWAY
 BETWEEN SR 1772 AND SR 1627



DRAWN BY : **S.D. COOPER** DATE : **12-22**
 CHECKED BY : **J.A. BATTS** DATE : **12-22**
 DESIGN ENGINEER OF RECORD : **J.A. BATTS** DATE : **12-22**

REVISIONS

NO.	BY:	DATE:	NO.	BY:	DATE:
1			3		
2			4		

SHEET NO. **S1-01**
 TOTAL SHEETS **40**

**DOCUMENT NOT CONSIDERED FINAL
 UNLESS ALL SIGNATURES COMPLETED**

3/21/2023 8:05:14 AM P:\ Raleigh\Projects\2019\Division 9 (Davenport)\B-5783\Structures\Drawings\NEW\Final\280164_NB\B-5783_SMU_GD_280164.dgn