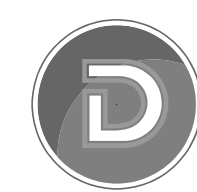
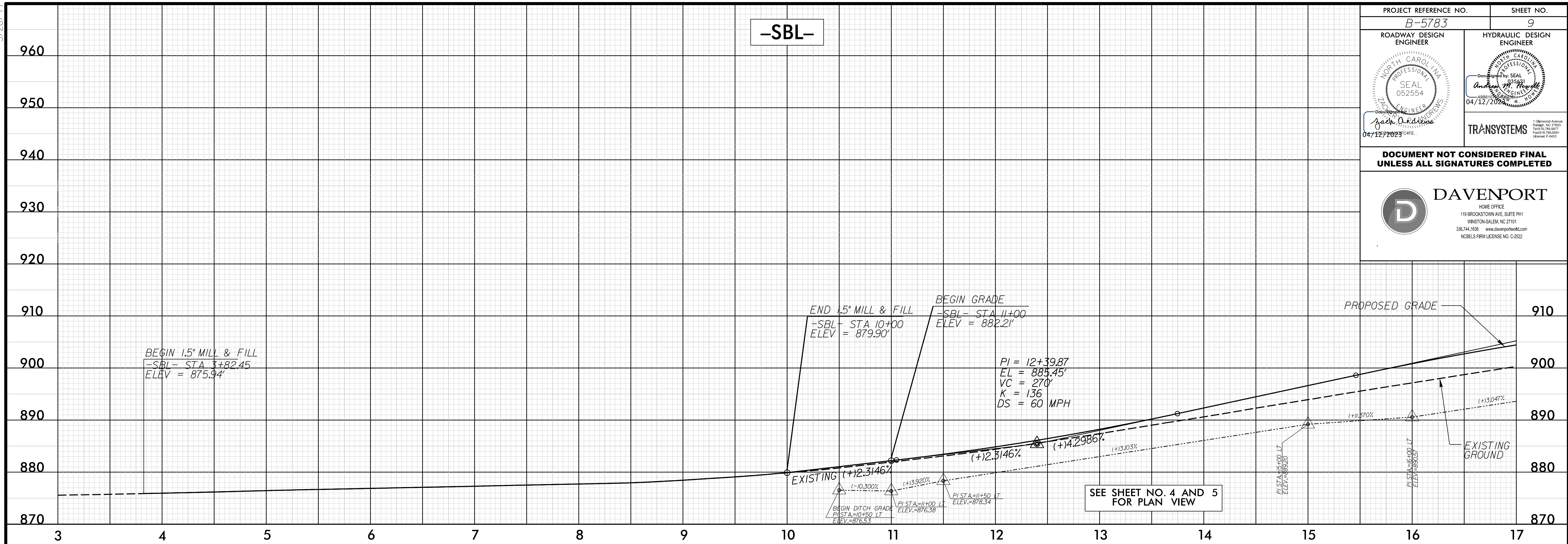
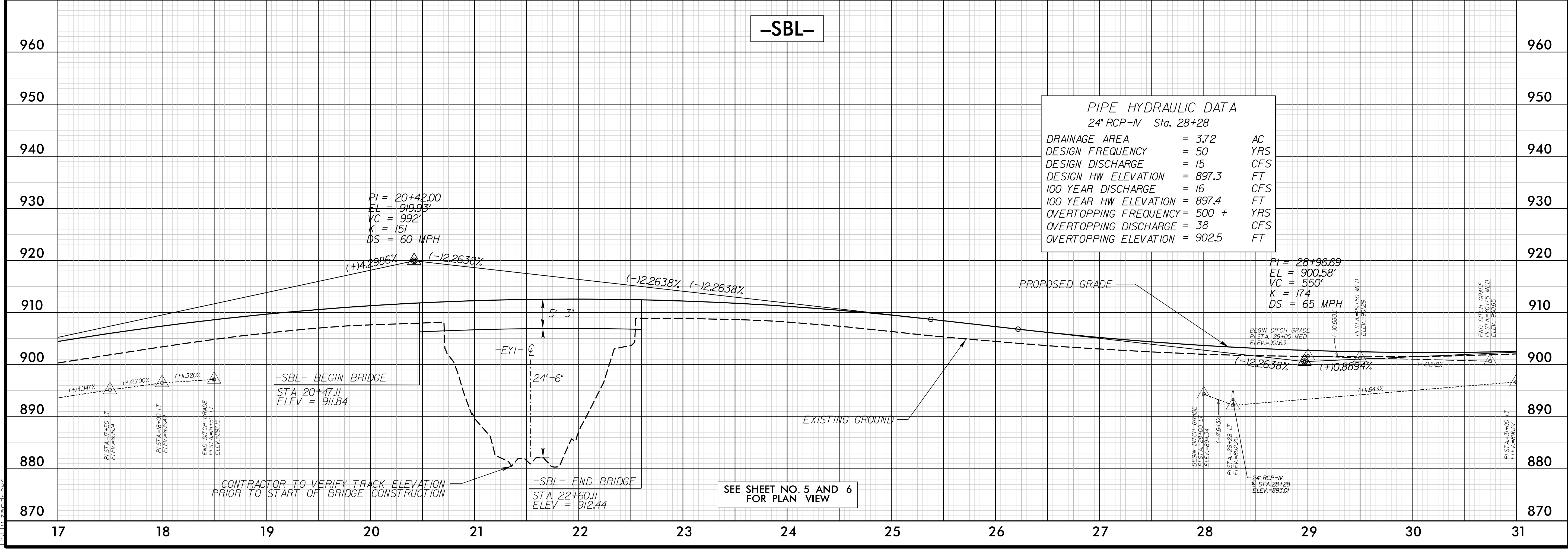


5/28/24

PROJECT REFERENCE NO. B-5783	SHEET NO. 9
ROADWAY DESIGN ENGINEER <i>Jack Ardine</i> SEAL 052554 04/12/2023	HYDRAULIC DESIGN ENGINEER <i>Andrew M. ...</i> SEAL 052554 04/12/2023
DOCUMENT NOT CONSIDERED FINAL UNLESS ALL SIGNATURES COMPLETED	
 DAVENPORT HOME OFFICE 119 BROOKSTOWN AVE. SUITE PH1 WINSTON-SALEM, NC 27101 336.744.1636 www.davenportnc.com NCBELS FIRM LICENSE NO. C-2522	



4:56:58 PM 7/1/2024 15:09:05 NCDOT_B5783_US29-70_DESIGN\B5783\Roadway\Sheets\B5783_R0Y_PSH_09.dgn



PIPE HYDRAULIC DATA
24" RCP-IV Sta. 28+28

DRAINAGE AREA	= 3.72	AC
DESIGN FREQUENCY	= 50	YRS
DESIGN DISCHARGE	= 15	CFS
DESIGN HW ELEVATION	= 897.3	FT
100 YEAR DISCHARGE	= 16	CFS
100 YEAR HW ELEVATION	= 897.4	FT
OVERTOPPING FREQUENCY	= 500 +	YRS
OVERTOPPING DISCHARGE	= 38	CFS
OVERTOPPING ELEVATION	= 902.5	FT

SEE SHEET NO. 5 AND 6 FOR PLAN VIEW

CONTRACTOR TO VERIFY TRACK ELEVATION PRIOR TO START OF BRIDGE CONSTRUCTION