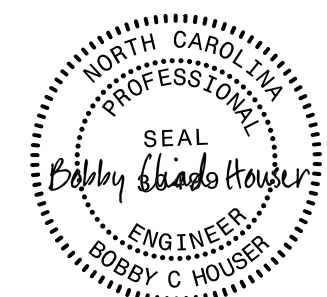


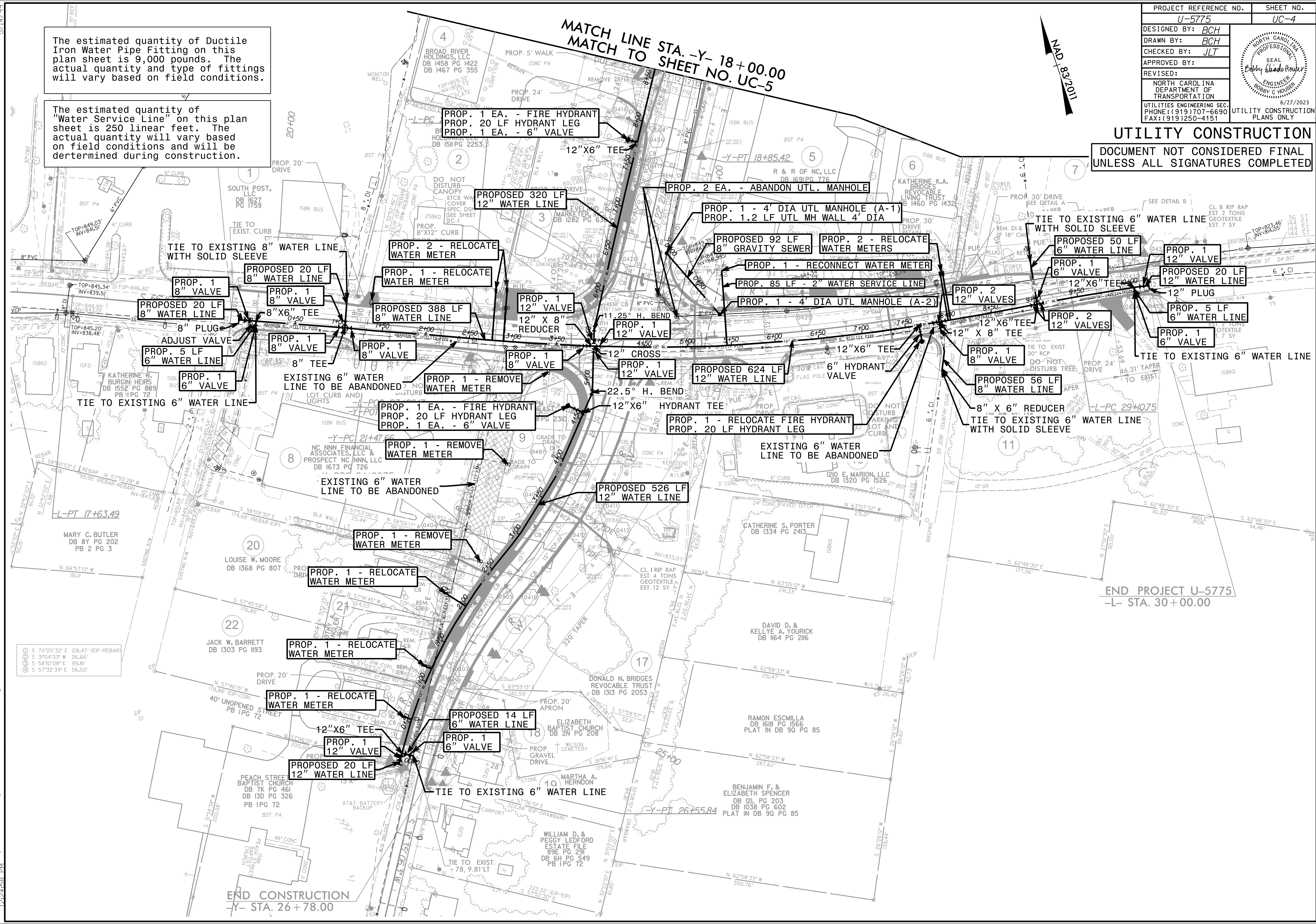
5/14/99

|  |   |
|--|---|
| PROJECT REFERENCE NO.  | SHEET NO.   |
| U-5775   | UC-4  |
| DESIGNED BY: BCH   |  |
| DRAWN BY: BCH  |   |
| CHECKED BY: JLT  |   |
| APPROVED BY:   |   |
| REVISED:   |   |
| NORTH CAROLINA DEPARTMENT OF TRANSPORTATION                          | 6/27/2023   |
| UTILITIES ENGINEERING SEC. PHONE: (919) 707-6690 FAX: (919) 250-4151 | UTILITY CONSTRUCTION PLANS ONLY   |

The estimated quantity of Ductile Iron Water Pipe Fitting on this plan sheet is 9,000 pounds. The actual quantity and type of fittings will vary based on field conditions.

The estimated quantity of "Water Service Line" on this plan sheet is 250 linear feet. The actual quantity and type of fittings will vary based on field conditions and will be determined during construction.

**UTILITY CONSTRUCTION**  
DOCUMENT NOT CONSIDERED FINAL UNLESS ALL SIGNATURES COMPLETED



- ① S 70°20'32" E 128.47' (EIP-REBAR)
- ② S 31°04'33" W 26.66'
- ③ S 58°10'08" E 99.81'
- ④ S 57°32'34" E 56.50'

END CONSTRUCTION  
-Y- STA. 26+78.00

END PROJECT U-5775  
-L- STA. 30+00.00

6/27/2023 10:51:11 AM C:\Users\jlt\OneDrive\Documents\U5775\_Ut.trdy.sht4.dgn