
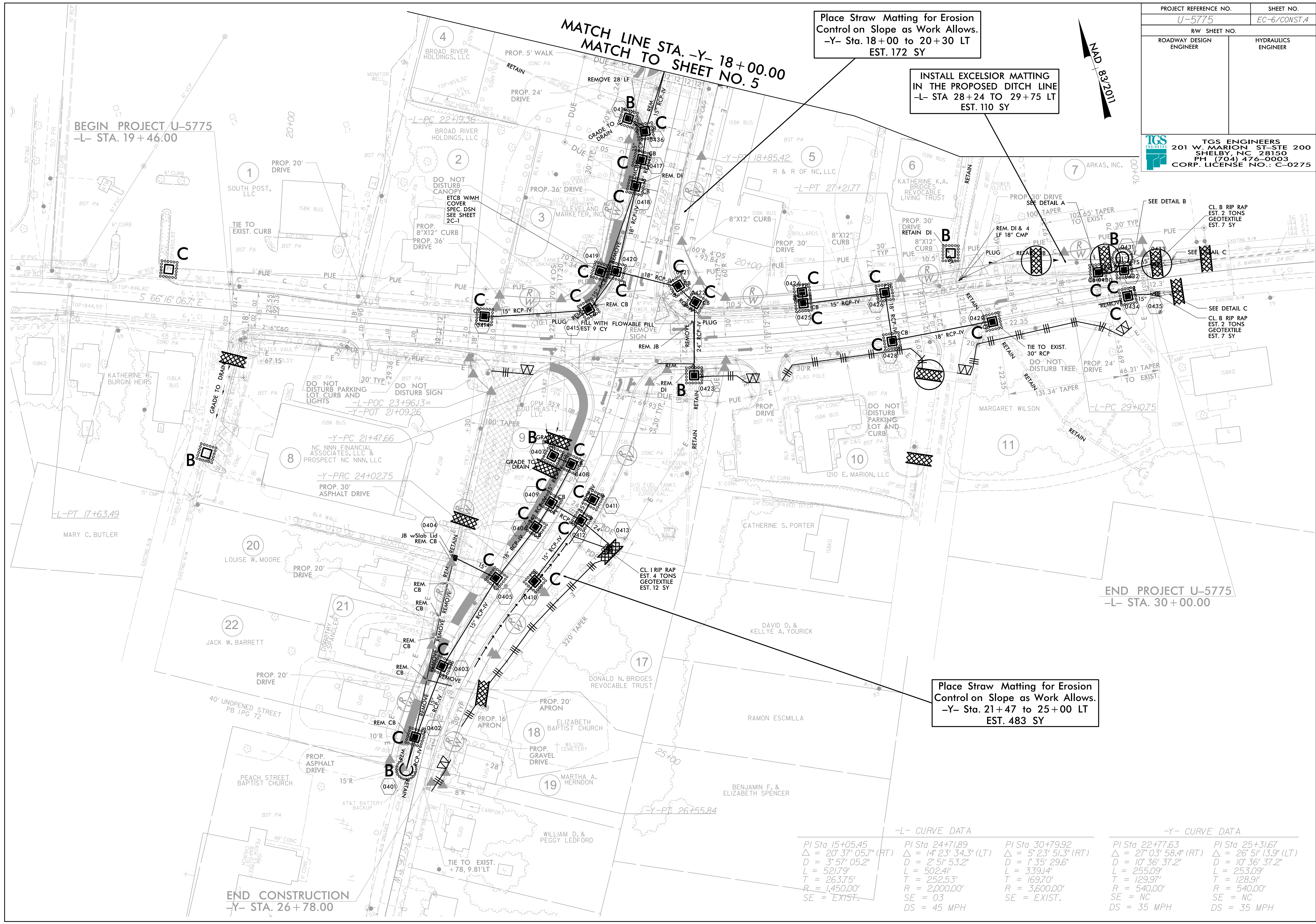


PROJECT REFERENCE NO.	SHEET NO.
U-5775	EC-6/CONST.4
RW SHEET NO.	
ROADWAY DESIGN ENGINEER	HYDRAULICS ENGINEER
 TGS ENGINEERS 201 W. MARION ST-STE 200 SHELBY, NC 28150 PH (704) 476-0003 CORP. LICENSE NO.: C-0275	



Place Straw Matting for Erosion Control on Slope as Work Allows.
 -Y- Sta. 18+00 to 20+30 LT
 EST. 172 SY

INSTALL EXCELSIOR MATTING
 IN THE PROPOSED DITCH LINE
 -L- STA 28+24 TO 29+75 LT
 EST. 110 SY

Place Straw Matting for Erosion Control on Slope as Work Allows.
 -Y- Sta. 21+47 to 25+00 LT
 EST. 483 SY

-L- CURVE DATA

PI Sta 15+05.45 Δ = 20° 37' 05.7" (RT) D = 3' 57' 05.2" L = 521.79' T = 263.75' R = 1,450.00' SE = EXIST.	PI Sta 24+71.89 Δ = 14° 23' 34.3" (LT) D = 2' 51' 53.2" L = 502.41' T = 252.53' R = 2,000.00' SE = 03 DS = 45 MPH	PI Sta 30+79.92 Δ = 5° 23' 51.3" (RT) D = 1' 35' 29.6" L = 339.14' T = 169.70' R = 3,600.00' SE = EXIST.
---	--	--

-Y- CURVE DATA

PI Sta 22+77.63 Δ = 27° 03' 58.4" (RT) D = 10' 36' 37.2" L = 255.09' T = 129.97' R = 540.00' SE = NC DS = 35 MPH	PI Sta 25+31.67 Δ = 26° 51' 13.9" (LT) D = 10' 36' 37.2" L = 253.09' T = 128.91' R = 540.00' SE = NC DS = 35 MPH
---	---

END CONSTRUCTION
 -Y- STA. 26+78.00

END PROJECT U-5775
 -L- STA. 30+00.00

BEGIN PROJECT U-5775
 -L- STA. 19+46.00