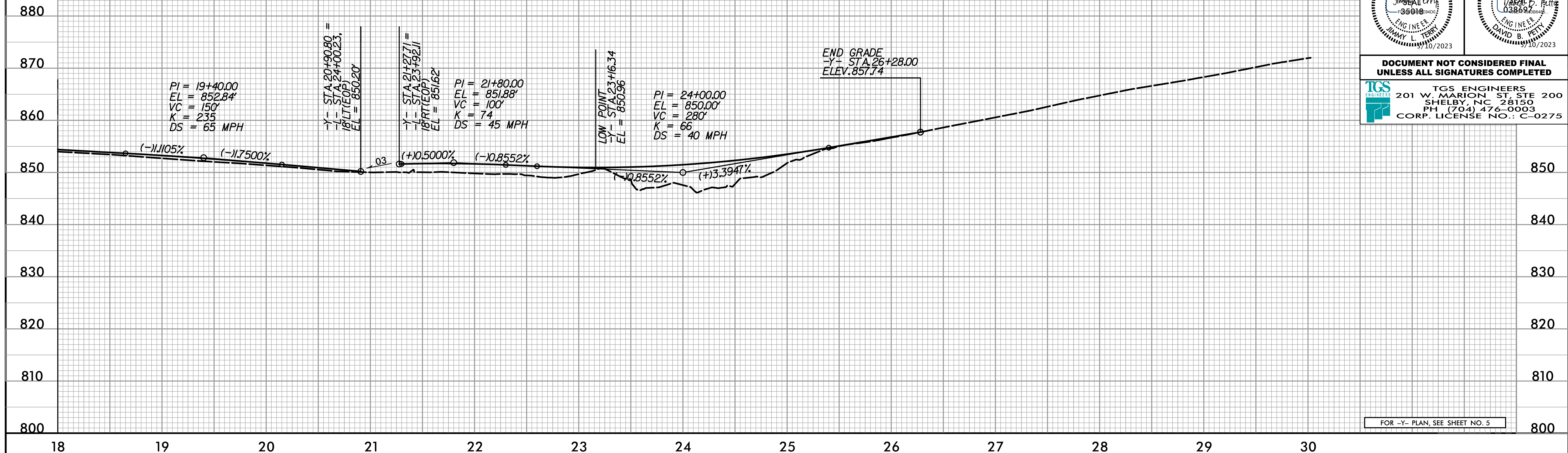


5/28/24

BM#3
RR SPIKE SET IN EAST SIDE
OF POWER POLE
RT 54.25' OF -Y- STA 13+28.29
ELEV. = 860.08'

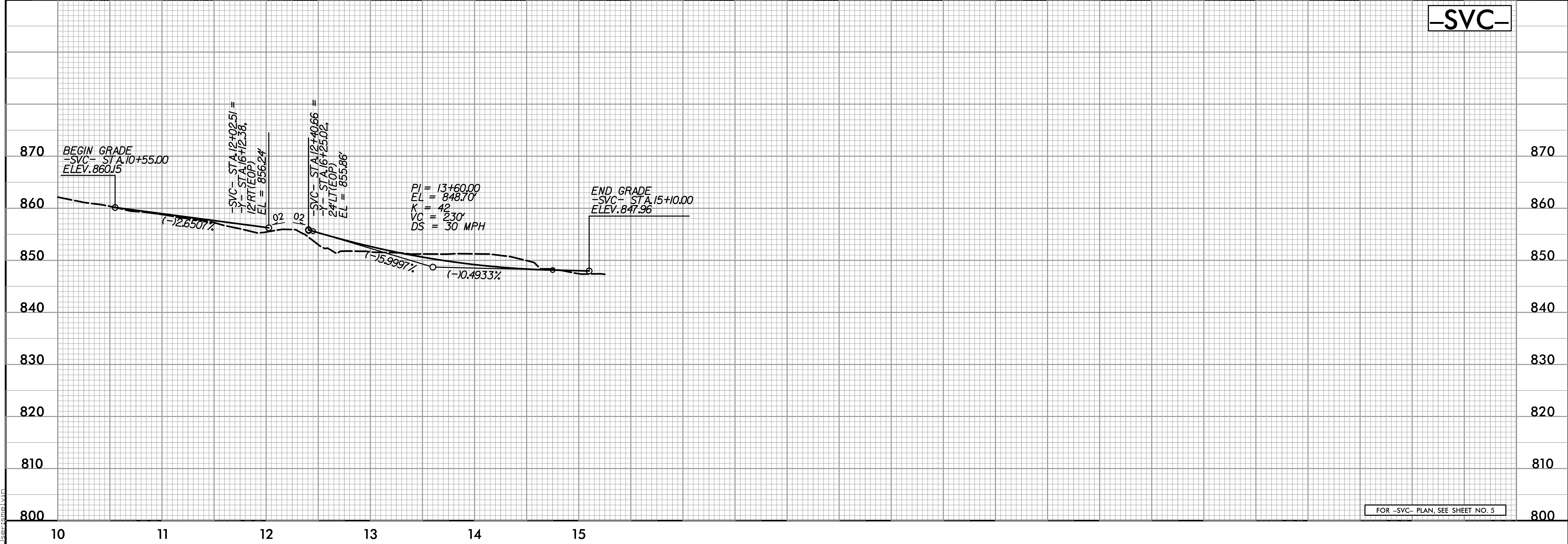
-Y-

PROJECT REFERENCE NO. U-5775	SHEET NO. 7
ROADWAY DESIGN ENGINEER	HYDRAULICS ENGINEER
DOCUMENT NOT CONSIDERED FINAL UNLESS ALL SIGNATURES COMPLETED	
TGS ENGINEERS 201 W. MARION ST. STE 200 SHELBY, NC 28150 PH (704) 476-0003 CORP. LICENSE NO.: C-0275	



FOR -Y- PLAN, SEE SHEET NO. 5

-SVC-



FOR -SVC- PLAN, SEE SHEET NO. 5

X:\2023\U-5775\Roadway\Proj\U-5775_Rdy_pfl.dgn