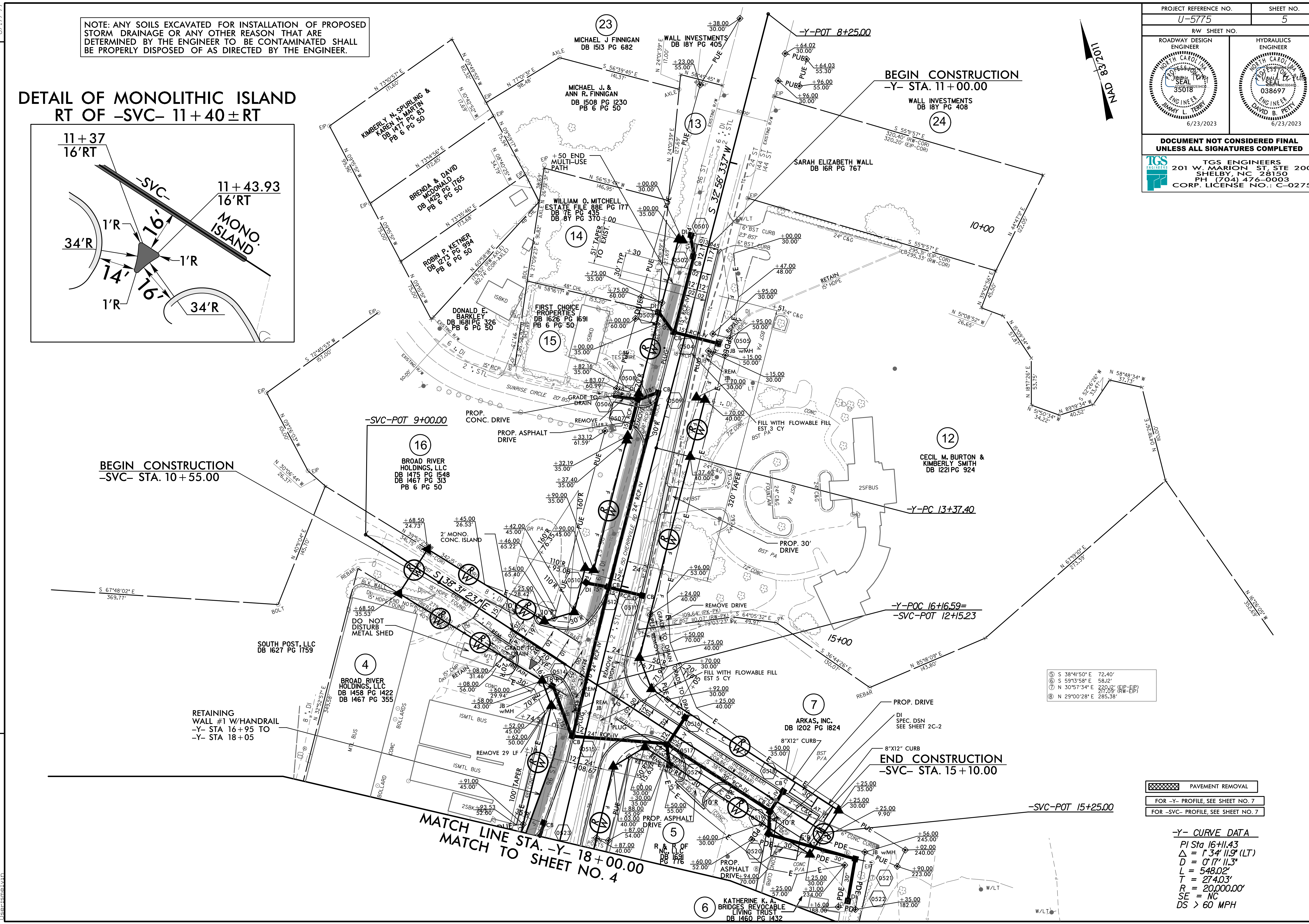
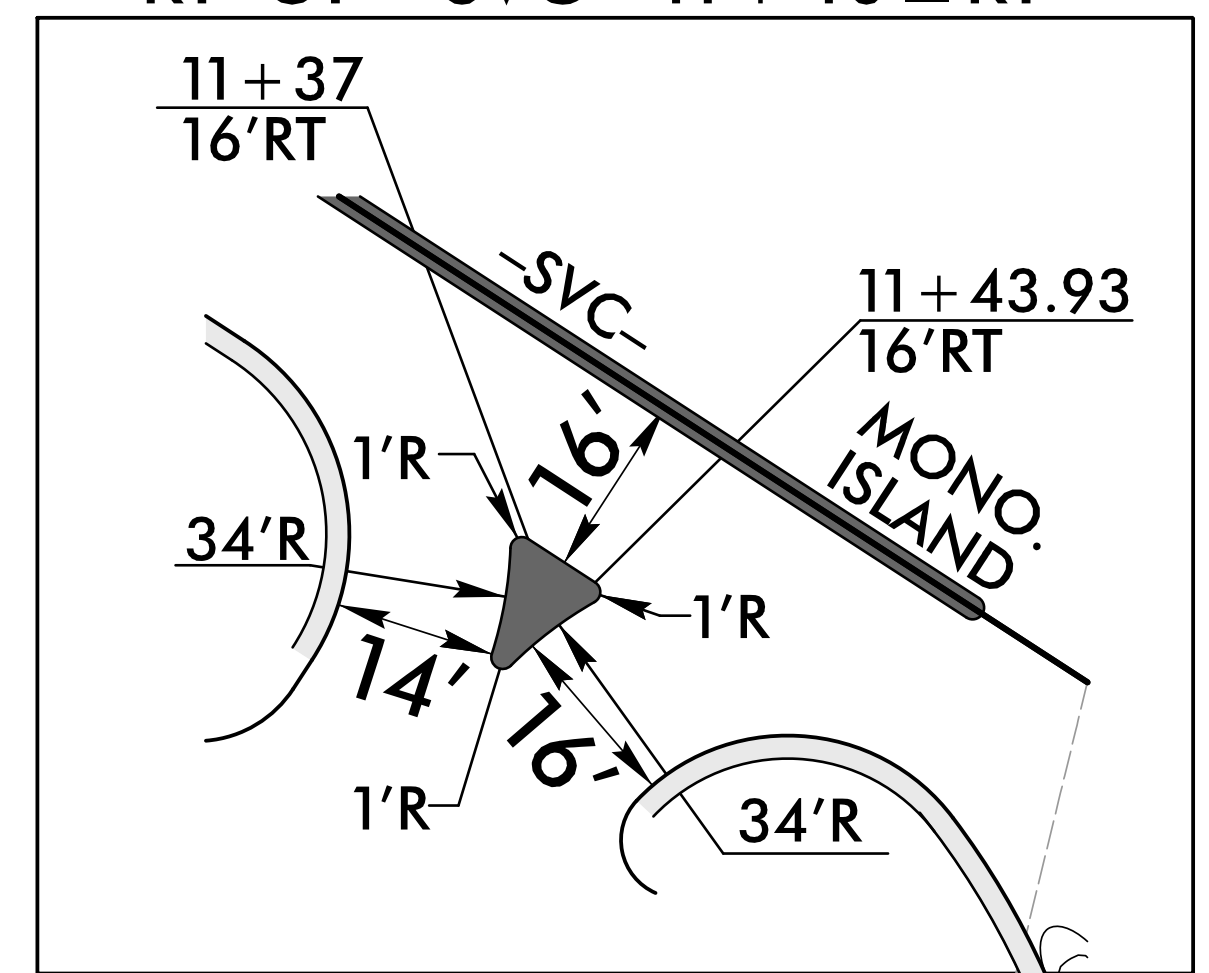


PROJECT REFERENCE NO. <b>U-5775</b>	SHEET NO. <b>5</b>
RW SHEET NO.	
ROADWAY DESIGN ENGINEER <b>JIMMY L. TERRY</b> 35018	HYDRAULICS ENGINEER <b>DAVID B. PERRY</b> 038697
6/23/2023	
<b>DOCUMENT NOT CONSIDERED FINAL UNLESS ALL SIGNATURES COMPLETED</b>	
<b>TGS ENGINEERS</b> 201 W. MARION ST. STE 200 SHELBY, NC 28150 PH: (704) 476-0003 CORP. LICENSE NO.: C-0275	

NOTE: ANY SOILS EXCAVATED FOR INSTALLATION OF PROPOSED STORM DRAINAGE OR ANY OTHER REASON THAT ARE DETERMINED BY THE ENGINEER TO BE CONTAMINATED SHALL BE PROPERLY DISPOSED OF AS DIRECTED BY THE ENGINEER.

**DETAIL OF MONOLITHIC ISLAND RT OF -SVC- 11+40± RT**



- 5 S 38°41'50" E 72.40'
- 6 S 59°13'58" E 58.12'
- 7 N 30°57'34" E 220.12' (EIP-EIP) 217.09' (RW-EIP)
- 8 N 29°00'28" E 285.38'

PAVEMENT REMOVAL  
 FOR -Y- PROFILE, SEE SHEET NO. 7  
 FOR -SVC- PROFILE, SEE SHEET NO. 7

**-Y- CURVE DATA**  
 P/ Sta 16+11.43  
 $\Delta = 1' 34" 11.9"$  (LT)  
 $D = 0' 17" 11.3"$   
 $L = 548.02'$   
 $T = 274.03'$   
 $R = 20,000.00'$   
 $SE = NC$   
 $DS > 60$  MPH

**MATCH LINE STA. -Y- 18+00.00  
 MATCH TO SHEET NO. 4**

REVISIONS

6/23/2023  
 K:\Roadway\U-5775\Roadway\Proj\U-5775\_Rdy\_psh\_05.dgn  
 J. Terry