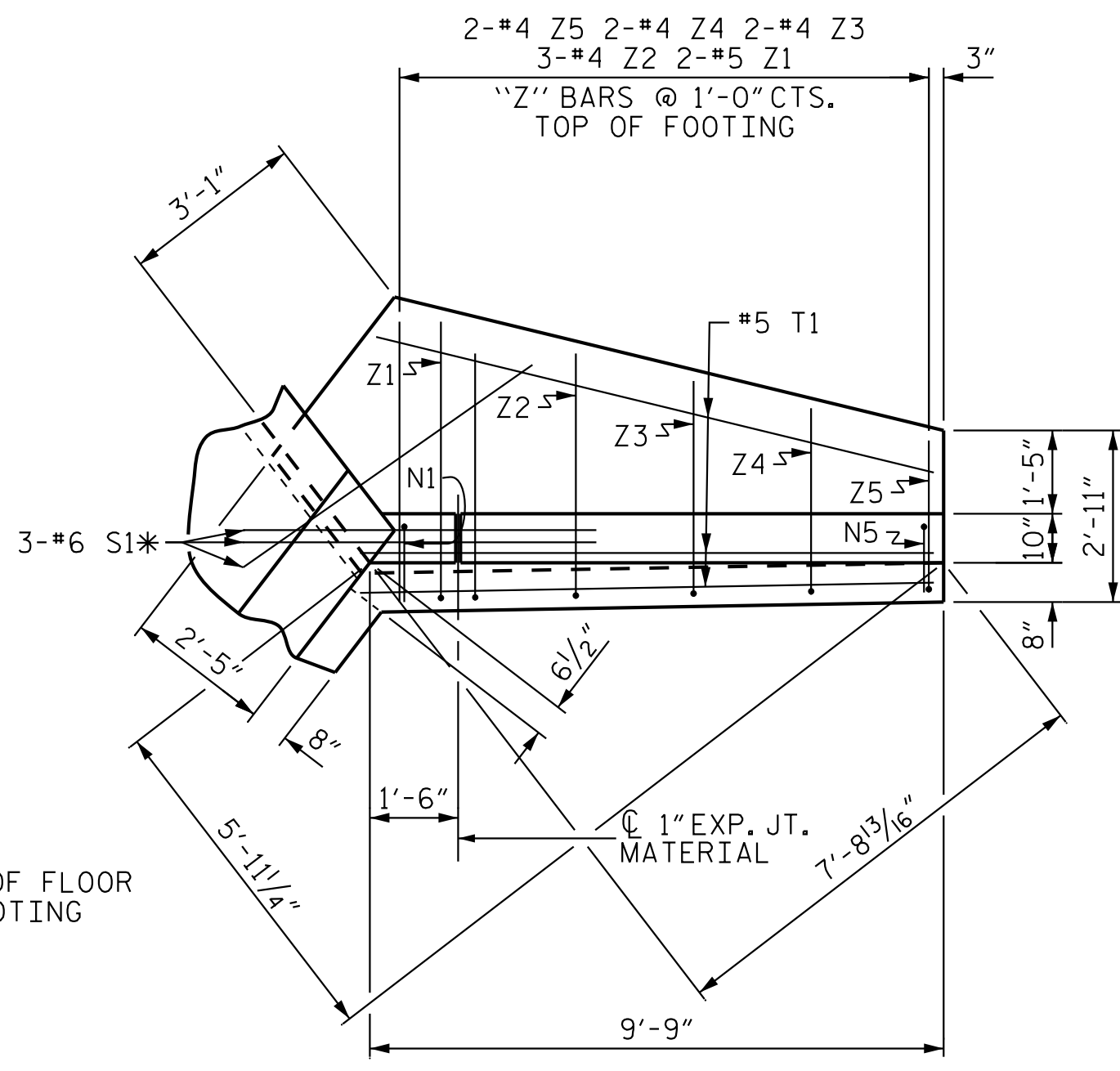
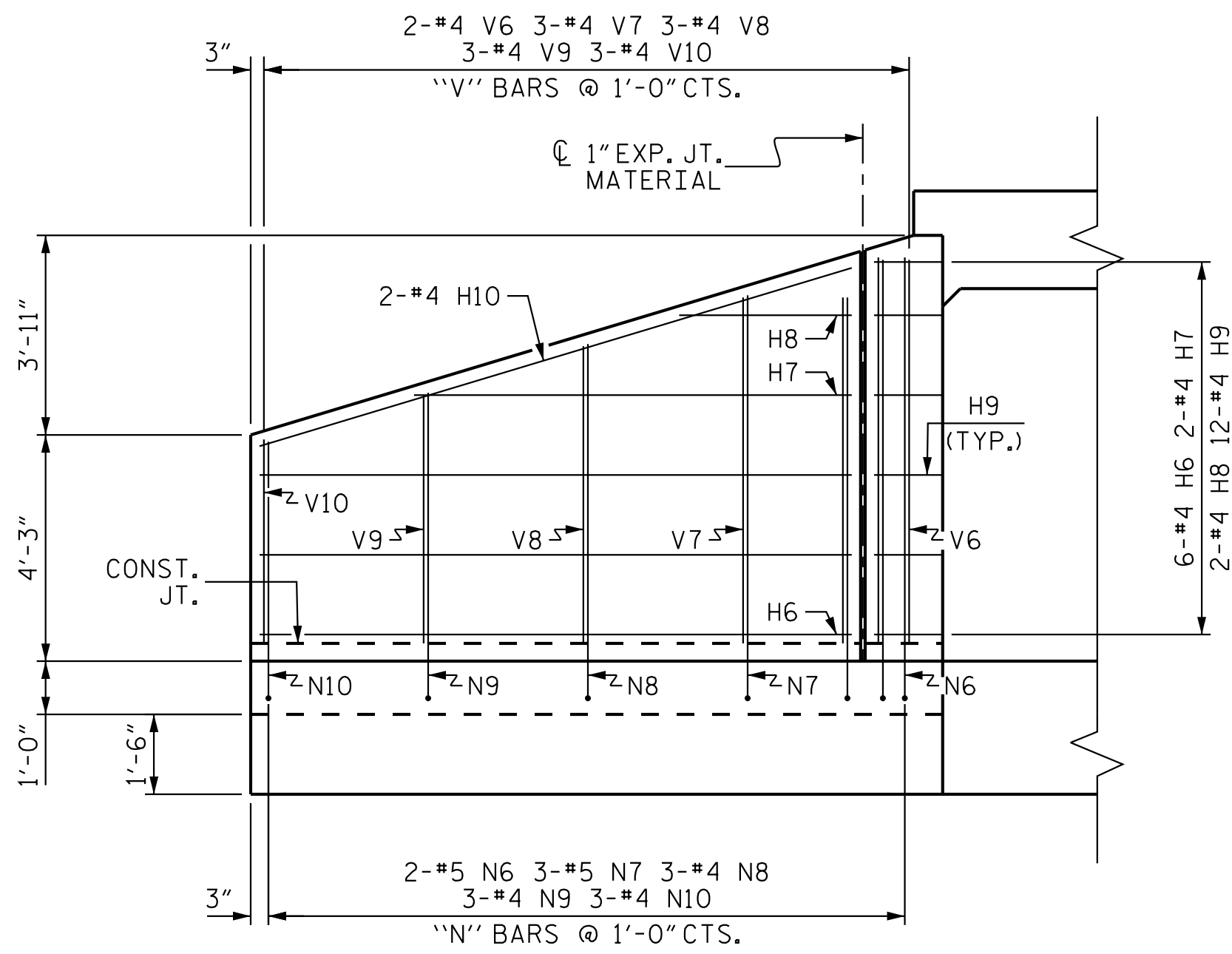


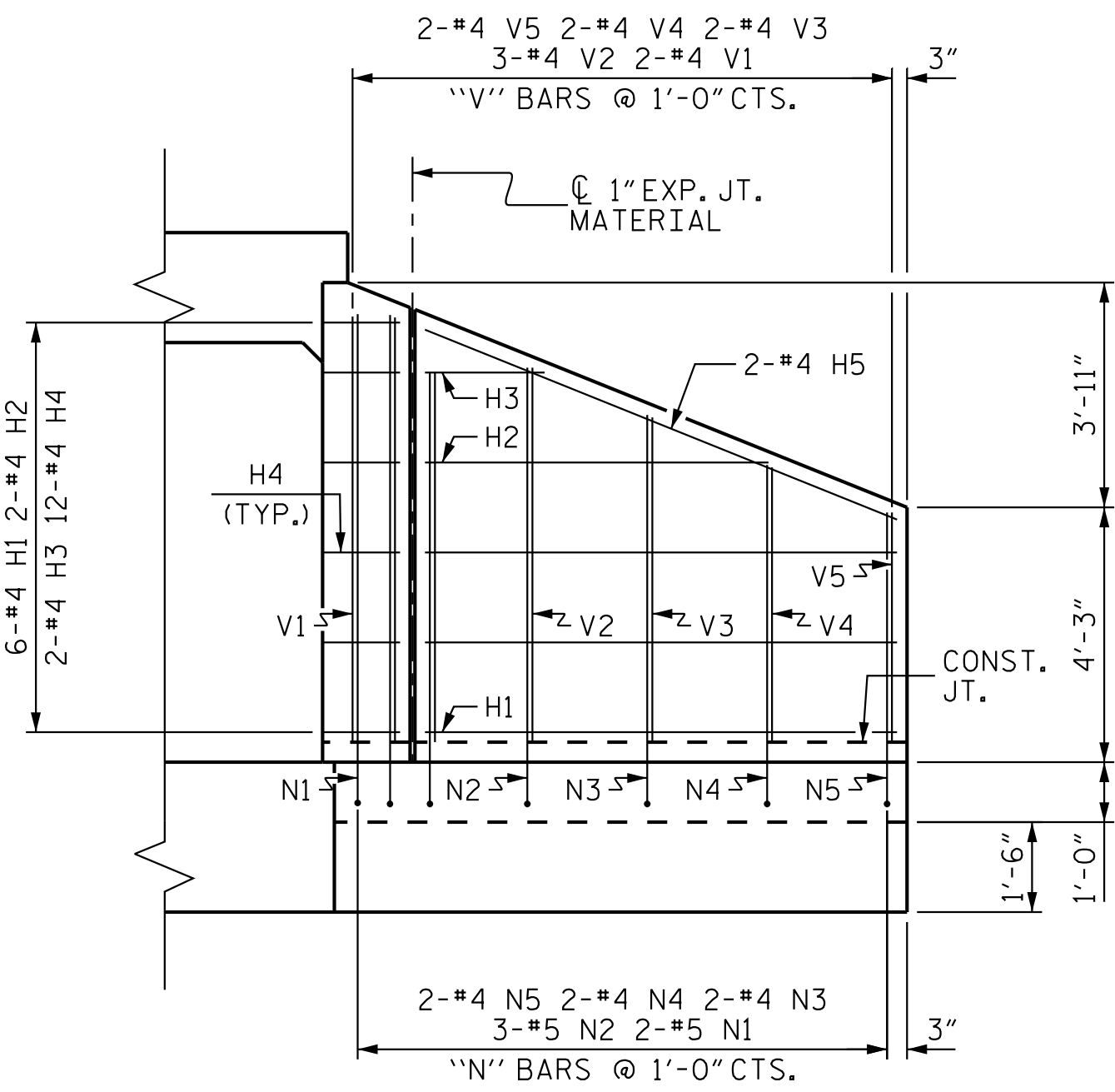
PLAN W1



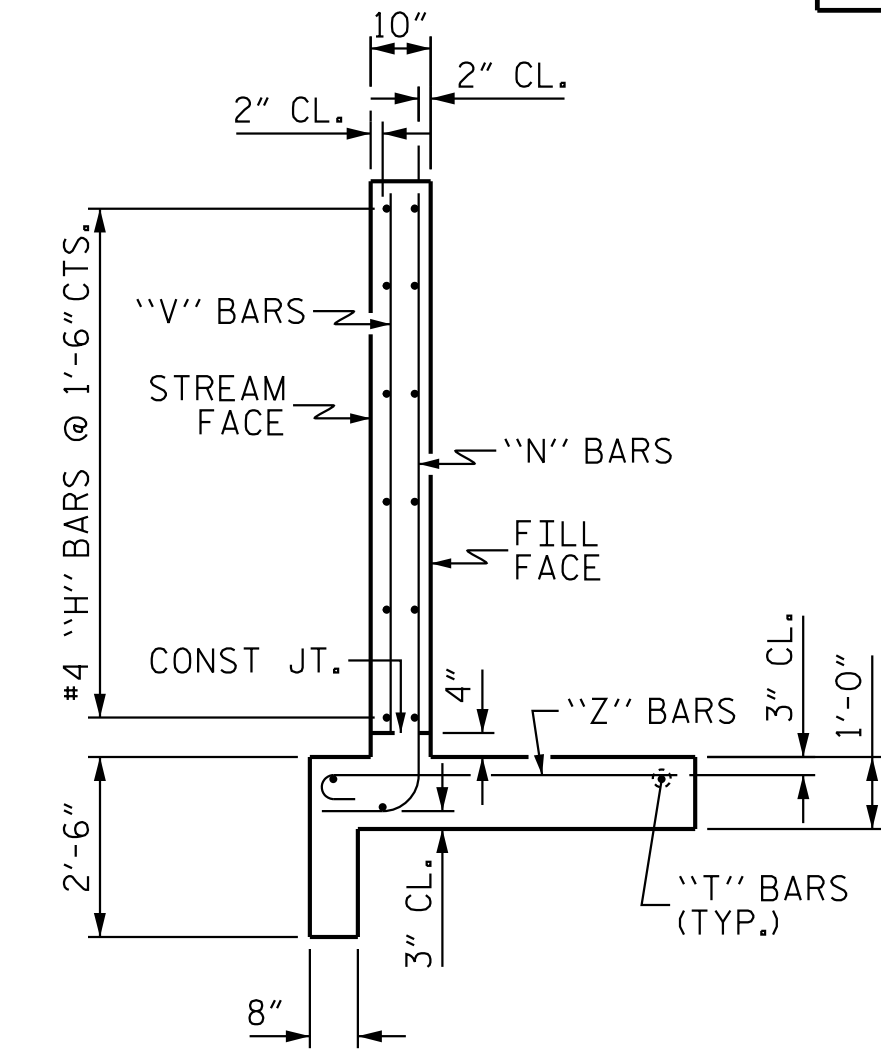
PLAN W2



ELEVATION W1

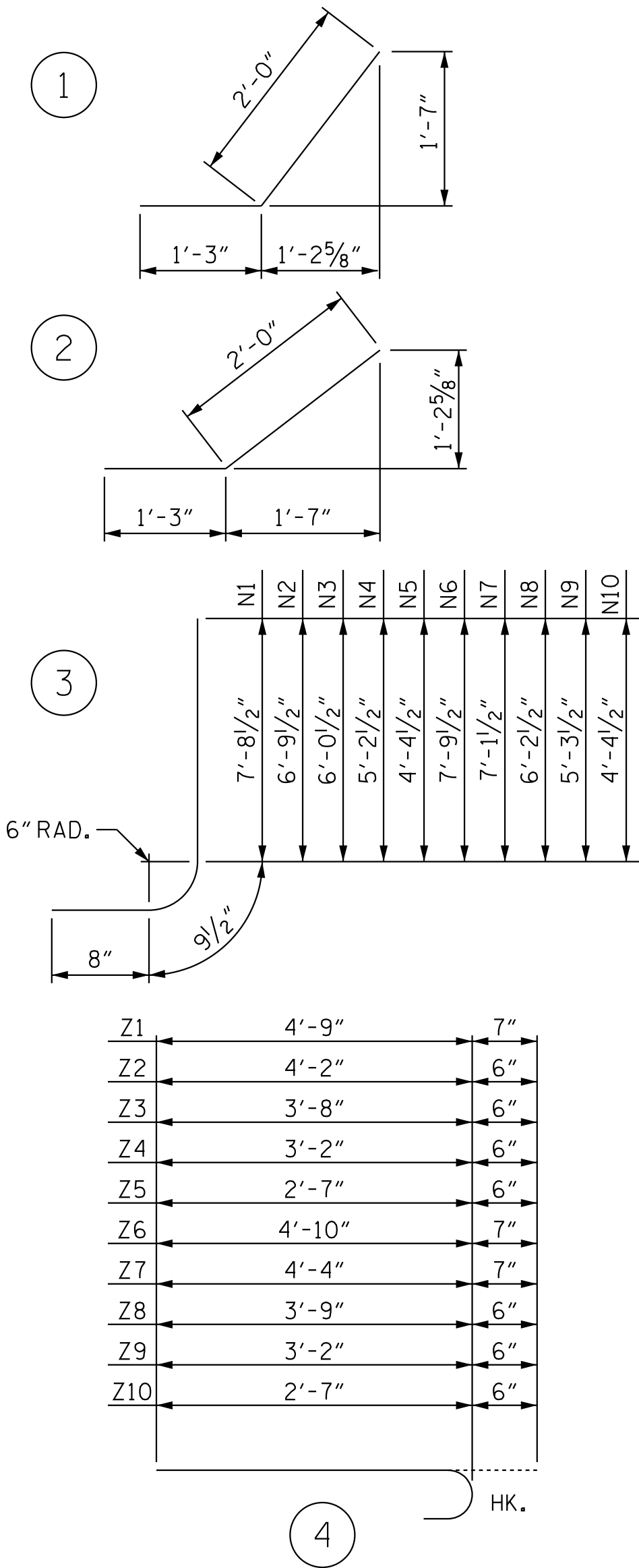


ELEVATION W2



TYPICAL WING SECTION

BAR TYPES



ALL BAR DIMENSIONS ARE OUT TO OUT.

BILL OF MATERIAL

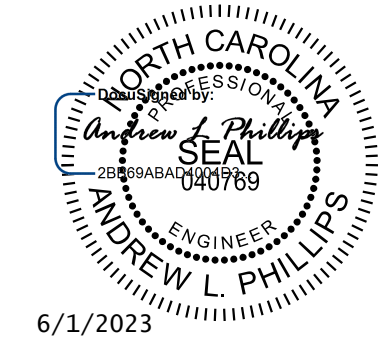
BAR	NO.	SIZE	TYPE	LENGTH	WEIGHT
H1	12	#4	STR	7'-10"	63
H2	4	#4	STR	5'-8"	15
H3	4	#4	STR	2'-0"	5
H4	24	#4	1	3'-3"	52
H5	4	#4	STR	8'-5"	22
H6	12	#4	STR	11'-1"	89
H7	4	#4	STR	8'-2"	22
H8	4	#4	STR	3'-3"	9
H9	24	#4	2	3'-3"	52
H10	4	#4	STR	11'-7"	31
N1	4	#5	3	9'-2"	38
N2	6	#5	3	8'-3"	52
N3	4	#4	3	7'-6"	20
N4	4	#4	3	6'-8"	18
N5	4	#4	3	5'-10"	16
N6	4	#5	3	9'-3"	39
N7	6	#5	3	8'-7"	54
N8	6	#4	3	7'-8"	31
N9	6	#4	3	6'-9"	27
N10	6	#4	3	5'-10"	23
S1	12	#6	STR	6'-0"	108
T1	6	#5	STR	9'-9"	61
T2	6	#5	STR	13'-0"	81
V1	4	#4	STR	7'-1"	19
V2	6	#4	STR	6'-3"	25
V3	4	#4	STR	5'-5"	14
V4	4	#4	STR	4'-7"	12
V5	4	#4	STR	3'-10"	10
V6	4	#4	STR	7'-3"	19
V7	6	#4	STR	6'-6"	26
V8	6	#4	STR	5'-7"	22
V9	6	#4	STR	4'-8"	19
V10	6	#4	STR	3'-10"	15
Z1	4	#5	4	5'-4"	22
Z2	6	#4	4	4'-8"	19
Z3	4	#4	4	4'-2"	11
Z4	4	#4	4	3'-8"	10
Z5	4	#4	4	3'-1"	8
Z6	4	#5	4	5'-5"	23
Z7	6	#5	4	4'-11"	31
Z8	6	#4	4	4'-3"	17
Z9	6	#4	4	3'-8"	15
Z10	6	#4	4	3'-1"	12

REINFORCING STEEL FOR 4 WINGS	1277 LBS
CLASS A CONCRETE	
4 WINGS	18.5 CY
2 HEADWALLS	0.9 CY
2 END CURTAIN WALLS	0.8 CY
TOTAL	20.2 CY

PROJECT NO. R-5930A
CHATHAM COUNTY
 STATION: 68+70.00 -L-

SHEET 5 OF 6

STATE OF NORTH CAROLINA
 DEPARTMENT OF TRANSPORTATION
 RALEIGH
STANDARD WINGS FOR CONCRETE BOX CULVERT
 H = 7'-0" SLOPE = 2:1
 105° SKEW



Kimley»Horn
 421 Fayetteville Street, Suite 600
 Raleigh, NC 27601-1772
 Phone (919) 677-2000 NC LICENSE # F-0102

REVISIONS						SHEET NO.
NO.	BY:	DATE:	NO.	BY:	DATE:	C2-5
1			3			TOTAL SHEETS
2			4			6

DOCUMENT NOT CONSIDERED FINAL UNLESS ALL SIGNATURES COMPLETED

This document, together with the concepts and designs presented herein, is an integral part of the project. It is to be used only in conjunction with the contract and specifications. No part of this document may be reproduced or transmitted in any form or by any means, electronic or mechanical, including photocopying, recording, or by any information storage and retrieval system, without the prior written authorization and approval by Kimley-Horn and Associates, Inc. shall be without liability to Kimley-Horn and Associates, Inc.

5/31/2023 K:\ARDI_Structures\Glover\1\NC\101036532 - R-5930 North CPW\Glover\1\NC\101036532 - R-5930.dgn
 5/31/2023 K:\ARDI_Structures\Glover\1\NC\101036532 - R-5930 North CPW\Glover\1\NC\101036532 - R-5930.dgn

ASSEMBLED BY : D. D. LOWERY	DATE : 01/2023
CHECKED BY : C. T. POOLE	DATE : 01/2023
DRAWN BY : CCJ 12/99	REV. 6/19
CHECKED BY : RWW 03/00	MAA/THC