

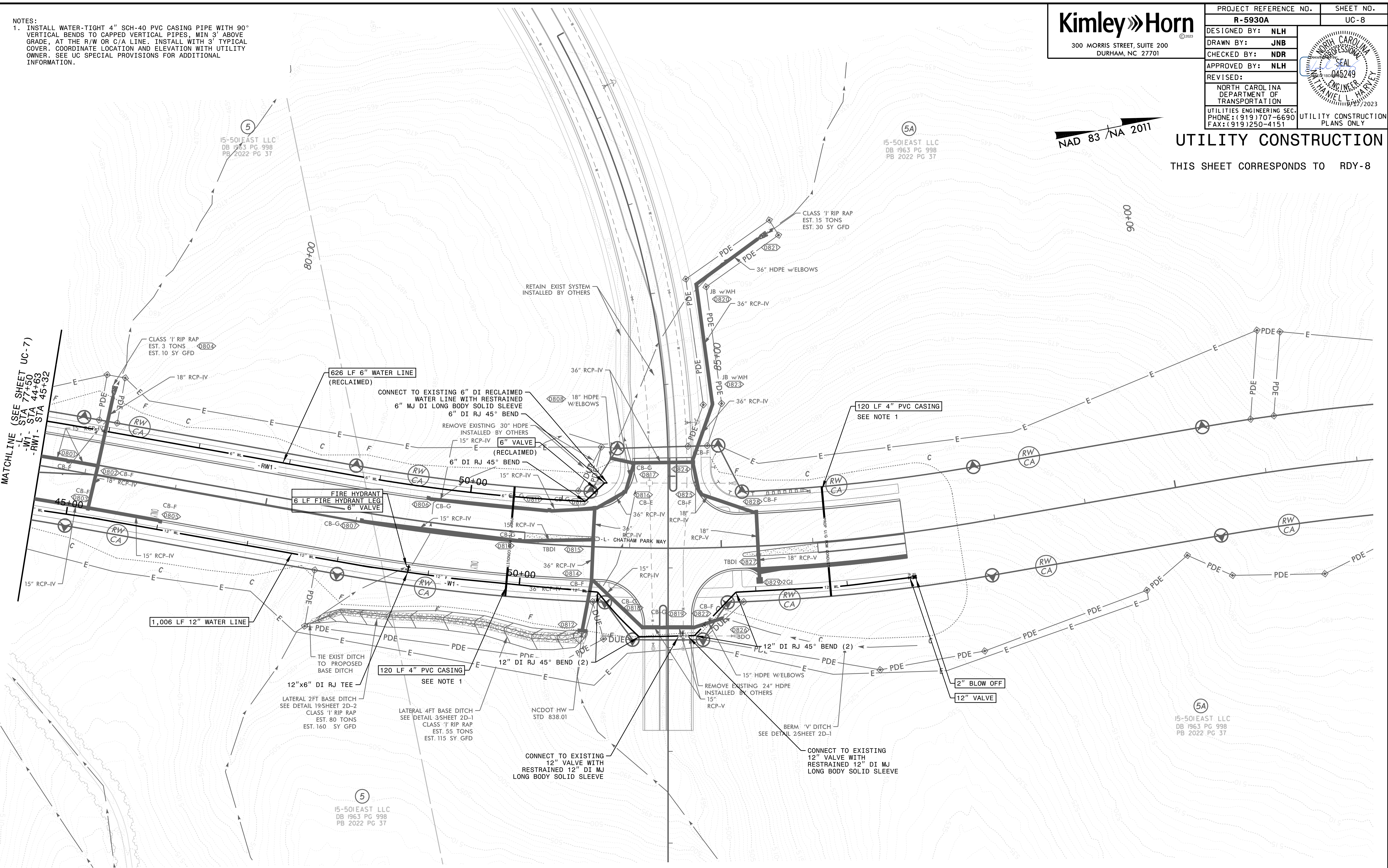
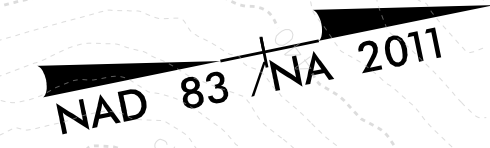
5/14/2023

NOTES:
 1. INSTALL WATER-TIGHT 4" SCH-40 PVC CASING PIPE WITH 90° VERTICAL BENDS TO CAPPED VERTICAL PIPES, MIN 3' ABOVE GRADE, AT THE R/W OR C/A LINE. INSTALL WITH 3" TYPICAL COVER. COORDINATE LOCATION AND ELEVATION WITH UTILITY OWNER. SEE UC SPECIAL PROVISIONS FOR ADDITIONAL INFORMATION.

Kimley»Horn		PROJECT REFERENCE NO. R-5930A	SHEET NO. UC-8
300 MORRIS STREET, SUITE 200 DURHAM, NC 27701		DESIGNED BY: NLH	
		DRAWN BY: JNB	
		CHECKED BY: NDR	
		APPROVED BY: NLH	
		REVISER:	
		NORTH CAROLINA DEPARTMENT OF TRANSPORTATION	
		UTILITIES ENGINEERING SEC. PHONE: (919) 707-6690 FAX: (919) 250-4151	
		UTILITY CONSTRUCTION PLANS ONLY	

UTILITY CONSTRUCTION

THIS SHEET CORRESPONDS TO RDY-8



MATCHLINE (SEE SHEET UC-7)
-L- STA 77+50
-W1- STA 44+00
-RW1- STA 45+32

NOTE:
 THE ESTIMATED QUANTITY OF BETTERMENT DUCTILE IRON WATER PIPE FITTINGS ON THIS PLAN SHEET IS 1,630 POUNDS. THE ACTUAL QUANTITY AND TYPE OF FITTINGS WILL VARY BASED ON FIELD CONDITIONS.

NOTE:
 THE ESTIMATED QUANTITY OF BETTERMENT DUCTILE IRON SEWER PIPE FITTINGS ON THIS PLAN SHEET IS 0 POUNDS. THE ACTUAL QUANTITY AND TYPE OF FITTINGS WILL VARY BASED ON FIELD CONDITIONS.

5/17/2023