
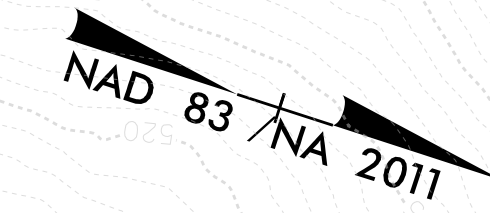


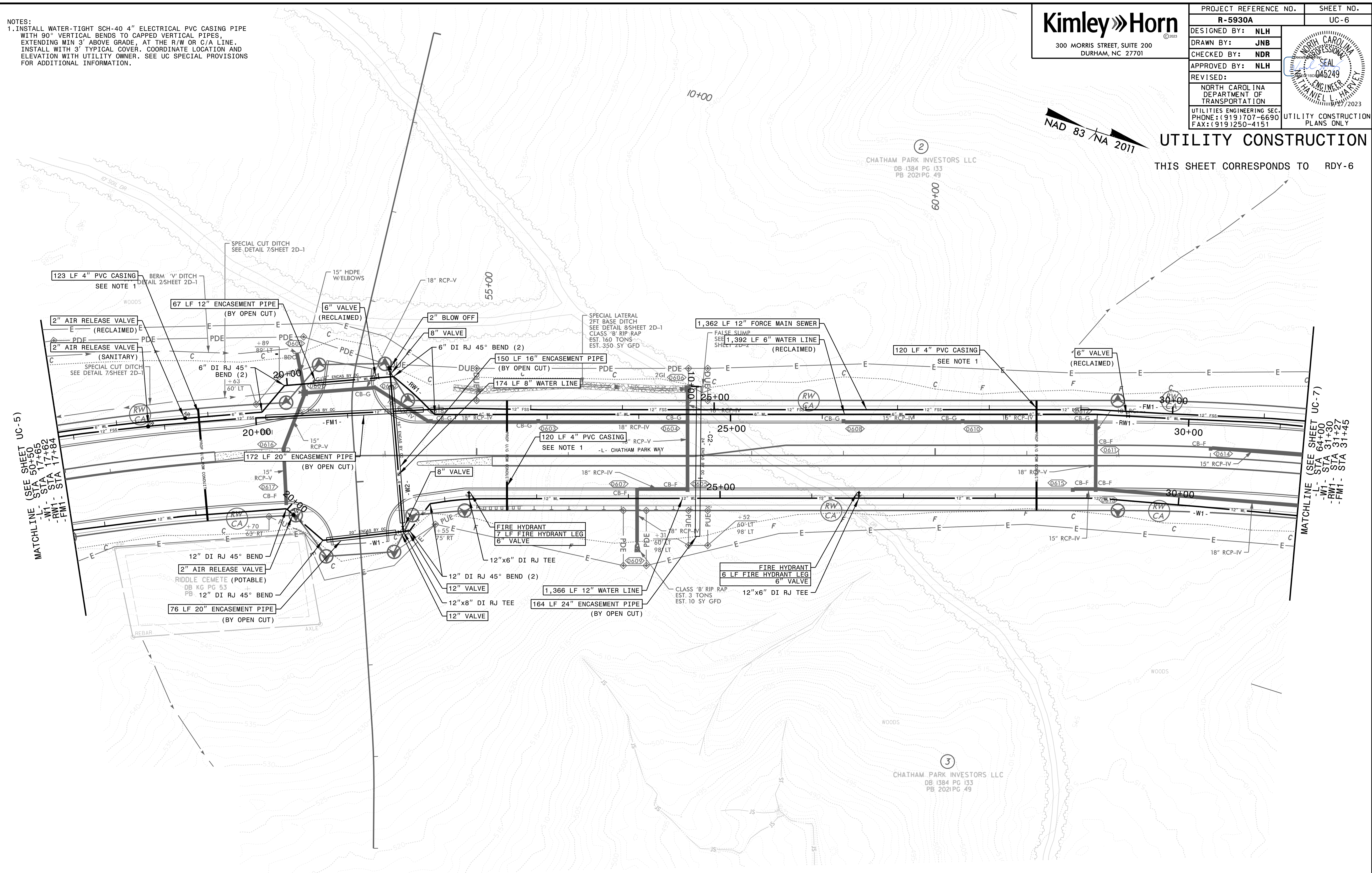
NOTES:
 1. INSTALL WATER-TIGHT SCH-40 4" ELECTRICAL PVC CASING PIPE WITH 90° VERTICAL BENDS TO CAPPED VERTICAL PIPES, EXTENDING MIN 3' ABOVE GRADE, AT THE R/W OR C/A LINE. INSTALL WITH 3' TYPICAL COVER, COORDINATE LOCATION AND ELEVATION WITH UTILITY OWNER. SEE UC SPECIAL PROVISIONS FOR ADDITIONAL INFORMATION.

 <p>300 MORRIS STREET, SUITE 200 DURHAM, NC 27701</p>	PROJECT REFERENCE NO.	SHEET NO.
	R-5930A	UC-6
	DESIGNED BY: NLH	
	DRAWN BY: JNB	
	CHECKED BY: NDR	
APPROVED BY: NLH		
REVISED:		
NORTH CAROLINA PROFESSIONAL SEAL 045249 ENGINEER 11/15/2023		
NORTH CAROLINA DEPARTMENT OF TRANSPORTATION UTILITIES ENGINEERING SEC. PHONE: (919) 707-6690 FAX: (919) 250-4151		UTILITY CONSTRUCTION PLANS ONLY



UTILITY CONSTRUCTION

THIS SHEET CORRESPONDS TO RDY-6



MATCHLINE (SEE SHEET UC-5)
 -L- STA 50+00
 -W1- STA 17+62
 -FM1- STA 17+84

MATCHLINE (SEE SHEET UC-7)
 -L- STA 64+00
 -W1- STA 31+30
 -FM1- STA 31+27
 -FM1- STA 31+45

NOTE:
 THE ESTIMATED QUANTITY OF BETTERMENT DUCTILE IRON WATER PIPE FITTINGS ON THIS PLAN SHEET IS 2,195 POUNDS. THE ACTUAL QUANTITY AND TYPE OF FITTINGS WILL VARY BASED ON FIELD CONDITIONS.

NOTE:
 THE ESTIMATED QUANTITY OF BETTERMENT DUCTILE IRON SEWER PIPE FITTINGS ON THIS PLAN SHEET IS 0 POUNDS. THE ACTUAL QUANTITY AND TYPE OF FITTINGS WILL VARY BASED ON FIELD CONDITIONS.