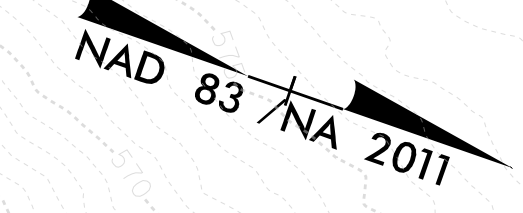


5/14/2023

NOTES:
 1. INSTALL WATER-TIGHT SCH-40 4" ELECTRICAL PVC CASING PIPE WITH 90° VERTICAL BENDS TO CAPPED VERTICAL PIPES, EXTENDING MIN 3' ABOVE GRADE, AT THE R/W OR C/A LINE. INSTALL WITH 3' TYPICAL COVER. COORDINATE LOCATION AND ELEVATION WITH UTILITY OWNER. SEE UC SPECIAL PROVISIONS FOR ADDITIONAL INFORMATION.

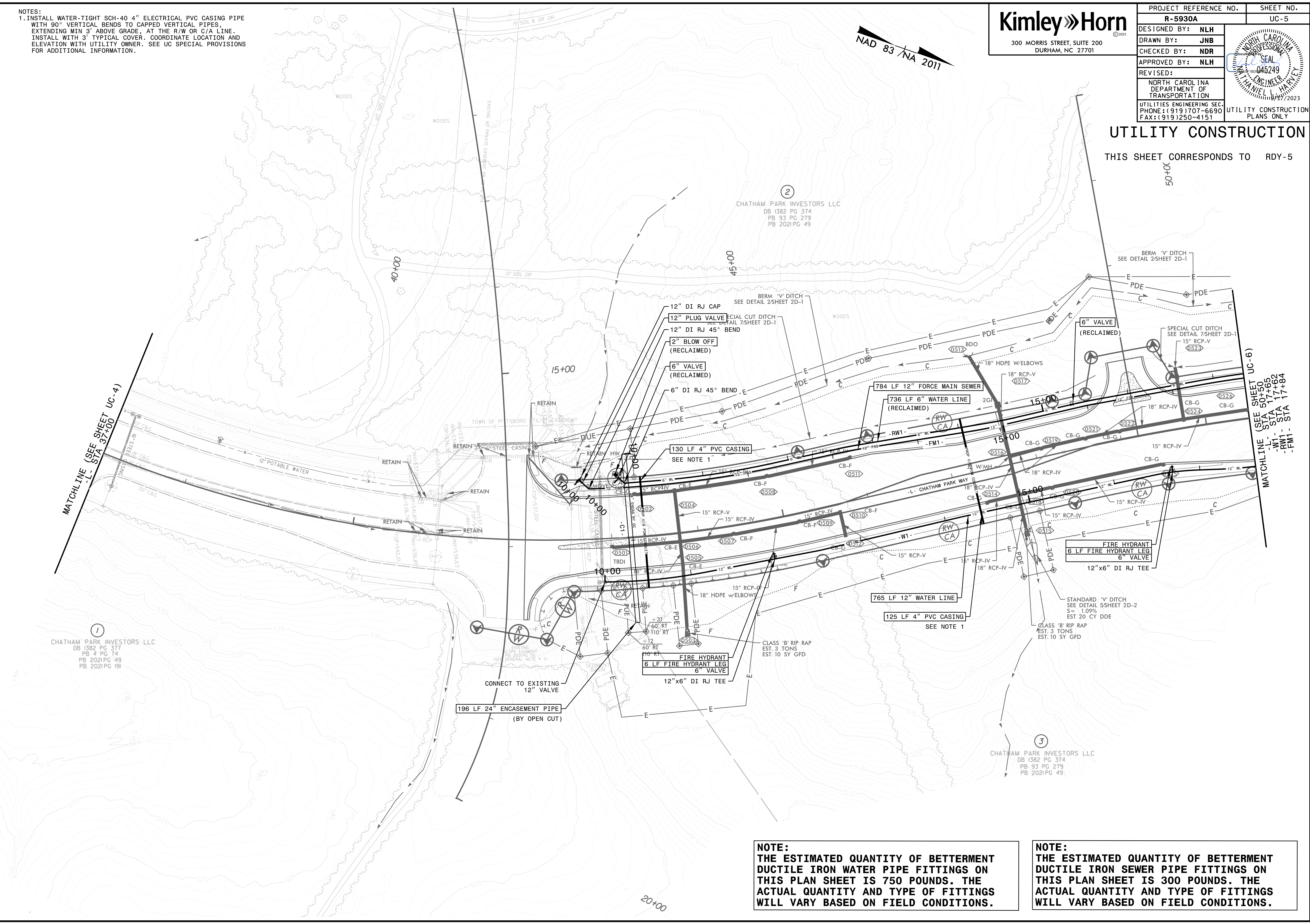
Kimley»Horn
 300 MORRIS STREET, SUITE 200
 DURHAM, NC 27701

PROJECT REFERENCE NO.	SHEET NO.
R-5930A	UC-5
DESIGNED BY: NLH	
DRAWN BY: JNB	
CHECKED BY: NDR	
APPROVED BY: NLH	
REVISED:	
NORTH CAROLINA DEPARTMENT OF TRANSPORTATION UTILITIES ENGINEERING SEC. PHONE: (919) 707-6690 FAX: (919) 250-4151	
UTILITY CONSTRUCTION PLANS ONLY	



UTILITY CONSTRUCTION

THIS SHEET CORRESPONDS TO RDY-5



MATCHLINE (SEE SHEET UC-4)
 -L- STA 37+00

MATCHLINE (SEE SHEET UC-6)
 -L- STA 17+65
 -W1- STA 17+62
 -FM1- STA 17+84

CHATHAM PARK INVESTORS LLC
 DB 1382 PG 377
 PB 4 PG 74
 PB 2021 PG 49
 PB 2021 PG 191

CHATHAM PARK INVESTORS LLC
 DB 1382 PG 374
 PB 93 PG 279
 PB 2021 PG 49

NOTE:
 THE ESTIMATED QUANTITY OF BETTERMENT DUCTILE IRON WATER PIPE FITTINGS ON THIS PLAN SHEET IS 750 POUNDS. THE ACTUAL QUANTITY AND TYPE OF FITTINGS WILL VARY BASED ON FIELD CONDITIONS.

NOTE:
 THE ESTIMATED QUANTITY OF BETTERMENT DUCTILE IRON SEWER PIPE FITTINGS ON THIS PLAN SHEET IS 300 POUNDS. THE ACTUAL QUANTITY AND TYPE OF FITTINGS WILL VARY BASED ON FIELD CONDITIONS.

5/17/2023