

Location and Surveys

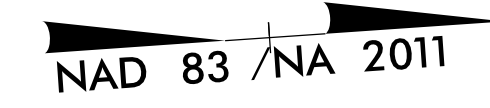
NIV5

NIV5 ENGINEERS & CONSULTANTS, INC.  
 3300 REGENCY PARKWAY, SUITE 100  
 CARY, NC 27518  
 P: 919.851.1912 www.NIV5.com  
 NC License # 1339 Formerly CA/N Engineers & Consultants

PROJECT SURVEYOR



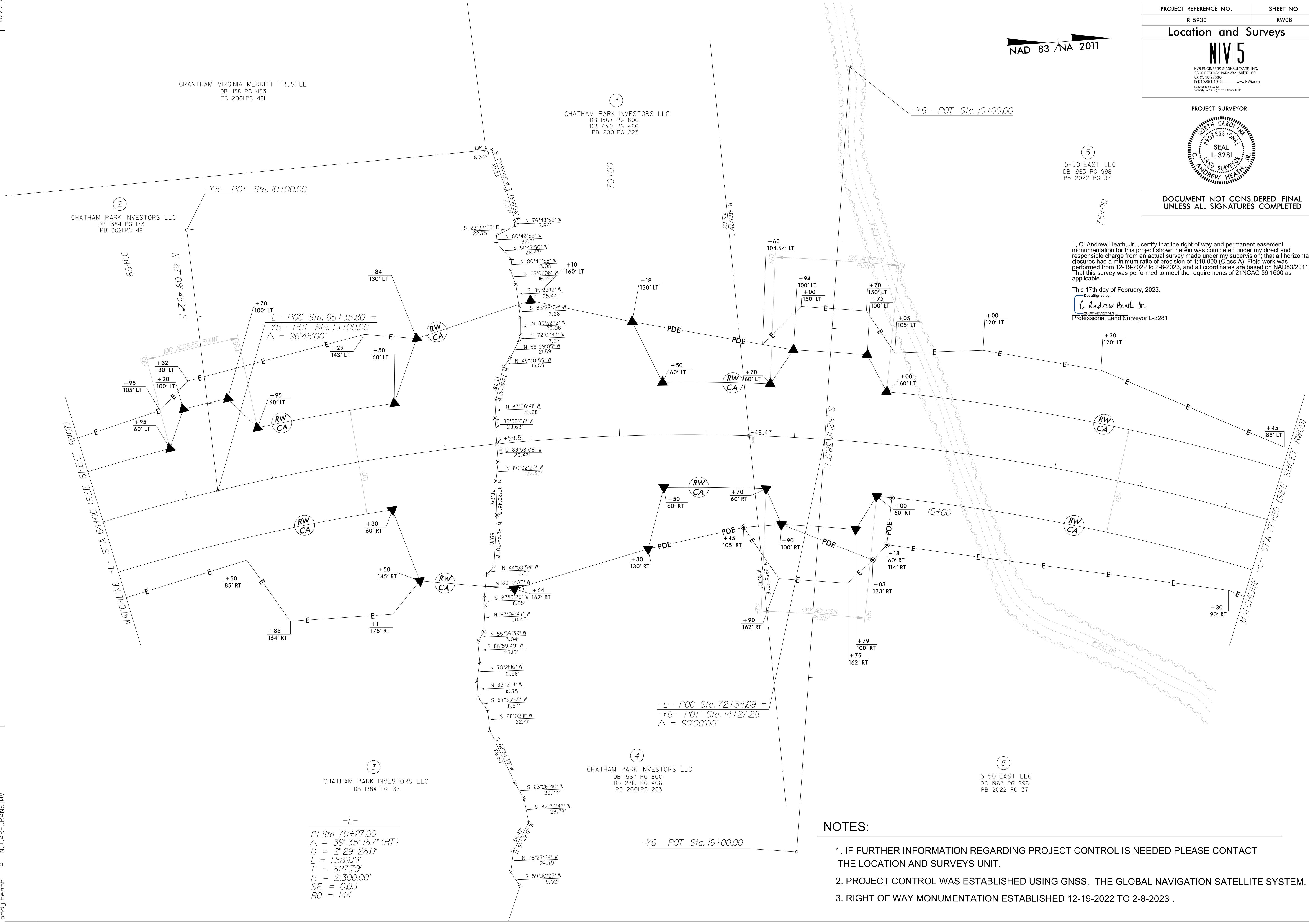
DOCUMENT NOT CONSIDERED FINAL UNLESS ALL SIGNATURES COMPLETED



⑤  
 15-501 EAST LLC  
 DB 1963 PG 99B  
 PB 2022 PG 37

I, C. Andrew Heath, Jr., certify that the right of way and permanent easement monumentation for this project shown herein was completed under my direct and responsible charge from an actual survey made under my supervision; that all horizontal closures had a minimum ratio of precision of 1:10,000 (Class A). Field work was performed from 12-19-2022 to 2-8-2023, and all coordinates are based on NAD83/2011; That this survey was performed to meet the requirements of 21NCAC 56.1600 as applicable.

This 17th day of February, 2023.  
 Documented by:  
 C. Andrew Heath, Jr.  
 2000148309241F  
 Professional Land Surveyor L-3281



REVISIONS

17-FEB-2023 10:44  
 C:\FEB2023\0822\2022\014\_95\SUR\ROW Sheets\5930\_1s\_r.w08.dgn  
 AT NCCAR-CRANSTON  
 andy.heath

NOTES:

1. IF FURTHER INFORMATION REGARDING PROJECT CONTROL IS NEEDED PLEASE CONTACT THE LOCATION AND SURVEYS UNIT.
2. PROJECT CONTROL WAS ESTABLISHED USING GNSS, THE GLOBAL NAVIGATION SATELLITE SYSTEM.
3. RIGHT OF WAY MONUMENTATION ESTABLISHED 12-19-2022 TO 2-8-2023 .