

5/14/99

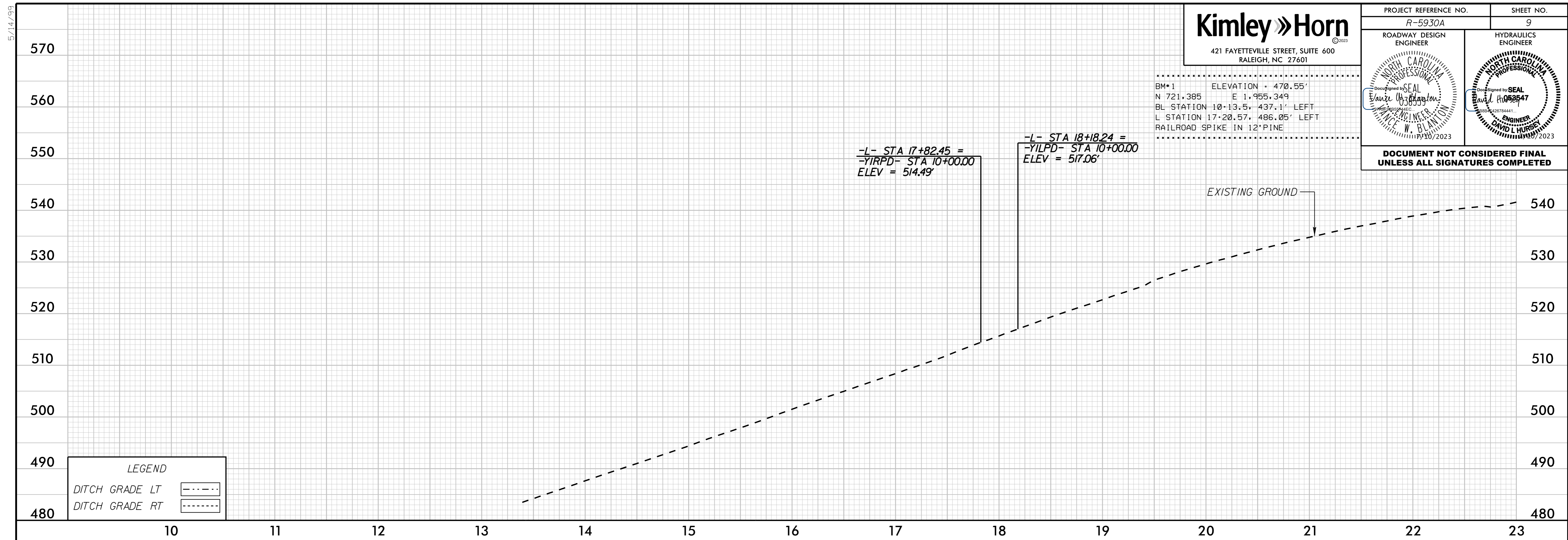


421 FAYETTEVILLE STREET, SUITE 600  
RALEIGH, NC 27601

PROJECT REFERENCE NO. R-5930A	SHEET NO. 9
ROADWAY DESIGN ENGINEER	HYDRAULICS ENGINEER
<i>David W. Blanton</i> SEAL 030593	<i>David L. Hulse</i> SEAL 008847
DAVID W. BLANTON ENGINEER 10/2023	DAVID L. HULSE ENGINEER 10/2023

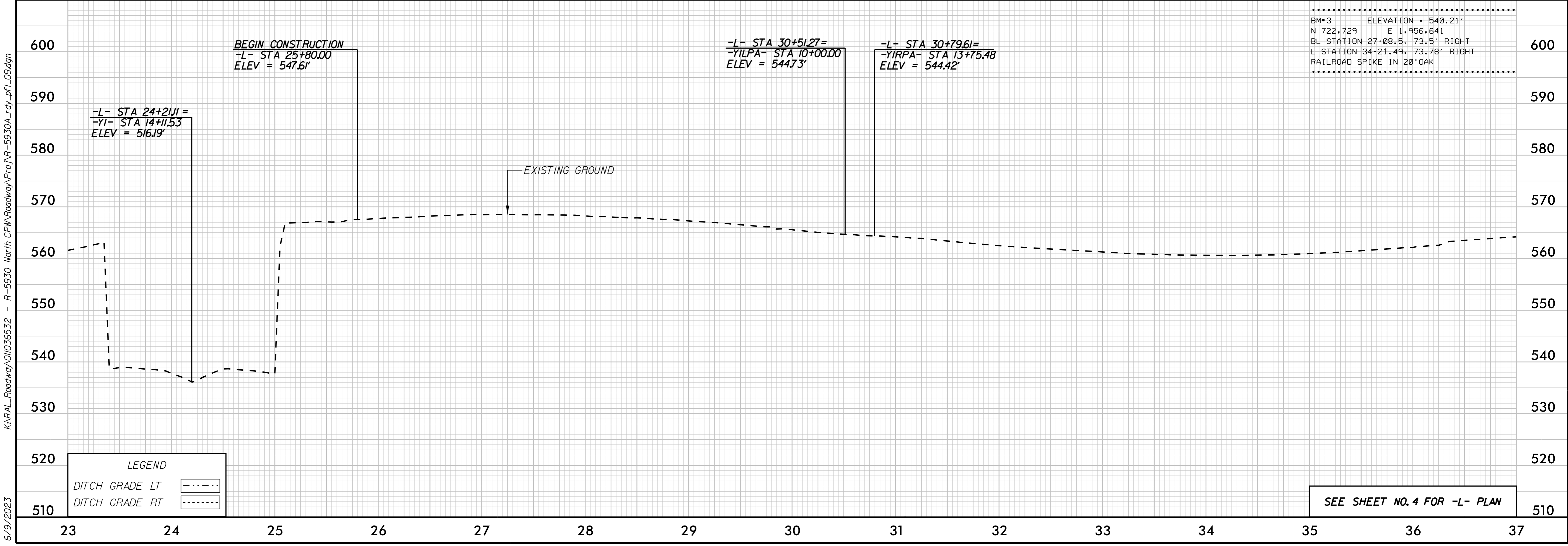
DOCUMENT NOT CONSIDERED FINAL  
UNLESS ALL SIGNATURES COMPLETED

BM\*1 ELEVATION = 470.55'  
 N 721.385 E 1.955.349  
 BL STATION 10+13.5, 437.1' LEFT  
 L STATION 17+20.57, 486.05' LEFT  
 RAILROAD SPIKE IN 12" PINE



LEGEND

DITCH GRADE LT	---
DITCH GRADE RT	----



BM\*3 ELEVATION = 540.21'  
 N 722.729 E 1.956.641  
 BL STATION 27+08.5, 73.5' RIGHT  
 L STATION 34+21.49, 73.78' RIGHT  
 RAILROAD SPIKE IN 20" OAK

LEGEND

DITCH GRADE LT	---
DITCH GRADE RT	----

SEE SHEET NO. 4 FOR -L- PLAN

K:\PAL\_Roadway\01036532 - R-5930 North CPW Roadway\Proj\R-5930A\_rdy\_pl\_09.dgn

6/9/2023