

PROJECT REFERENCE NO. R-5930A	SHEET NO. 7
R-5930 RW SHEET NO. 8	HYDRAULICS ENGINEER
ROADWAY DESIGN ENGINEER	SEAL 063547 DAVID L. HURSEY REGISTERED PROFESSIONAL ENGINEER STATE OF NORTH CAROLINA 06/12/2023
DOCUMENT NOT CONSIDERED FINAL UNLESS ALL SIGNATURES COMPLETED	

BM+5 ELEVATION = 480.21'
N 725.736 E 1,955.112'
BL STATION 60+02.8, 601.0' LEFT
L STATION 66+65.51, 553.35' LEFT
RAILROAD SPIKE IN 12" PINE
GRANTHAM VIRGINIA MERRITT TRUSTEE
DB 1138 PG 453
PB 2001 PG 491

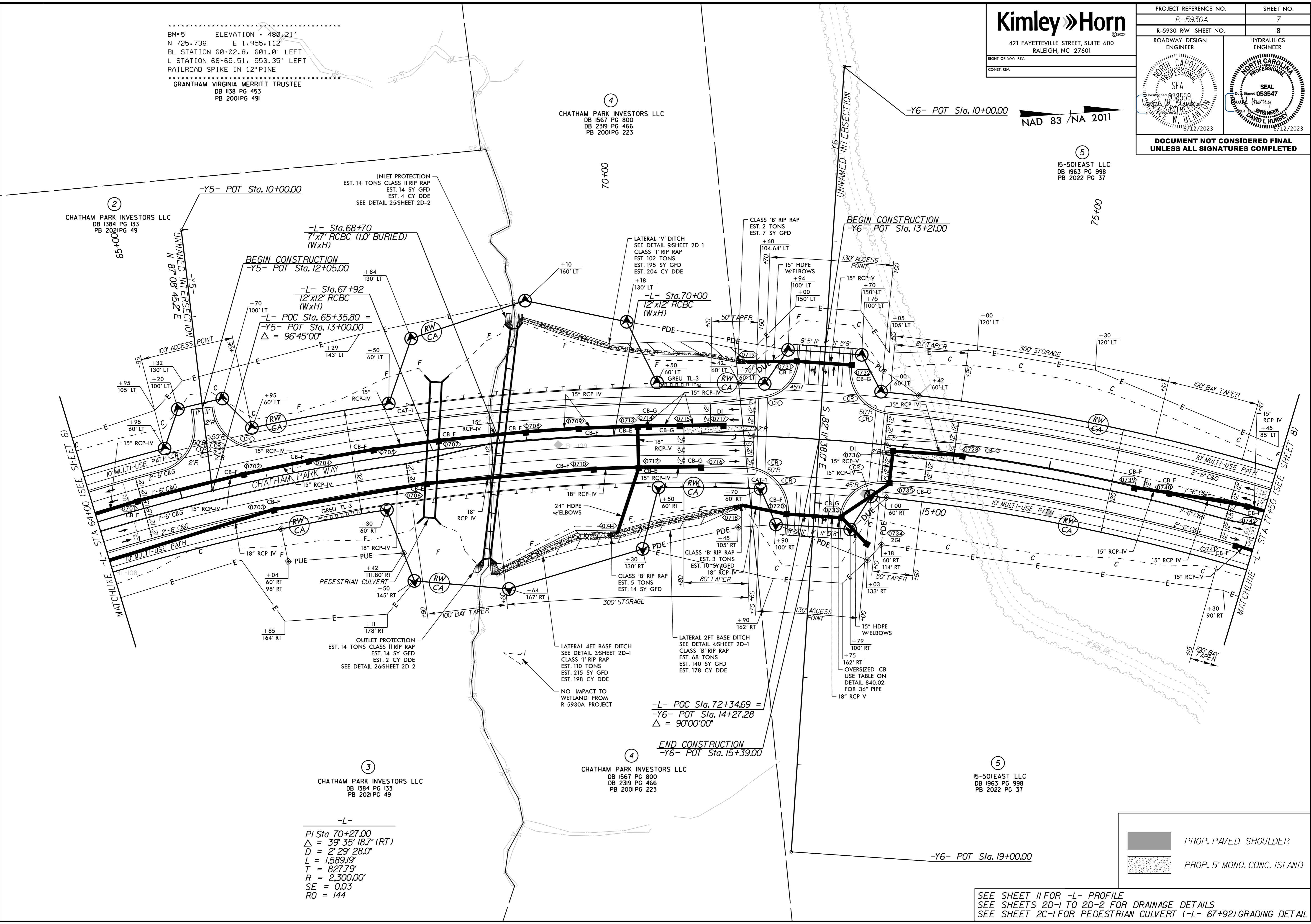
④
CHATHAM PARK INVESTORS LLC
DB 1567 PG 800
DB 2319 PG 466
PB 2001 PG 223

②
CHATHAM PARK INVESTORS LLC
DB 1384 PG 133
PB 2021 PG 49

⑤
15-50EAST LLC
DB 1963 PG 998
PB 2022 PG 37

NAD 83 / NA 2011

REVISIONS



-L-
PI Sta 70+27.00
 $\Delta = 39' 35' 18.7''$ (RT)
D = 2' 29' 28.0"
L = 1,589.19'
T = 827.79'
R = 2,300.00'
SE = 0.03
RO = 144

③
CHATHAM PARK INVESTORS LLC
DB 1384 PG 133
PB 2021 PG 49

④
CHATHAM PARK INVESTORS LLC
DB 1567 PG 800
DB 2319 PG 466
PB 2001 PG 223

⑤
15-50EAST LLC
DB 1963 PG 998
PB 2022 PG 37

■ PROP. PAVED SHOULDER
▨ PROP. 5" MONO. CONC. ISLAND

SEE SHEET 11 FOR -L- PROFILE
SEE SHEETS 2D-1 TO 2D-2 FOR DRAINAGE DETAILS
SEE SHEET 2C-1 FOR PEDESTRIAN CULVERT (-L- 67+92) GRADING DETAIL

6/9/2023