

TIP PROJECT: U-5748

STATE OF NORTH CAROLINA DIVISION OF HIGHWAYS

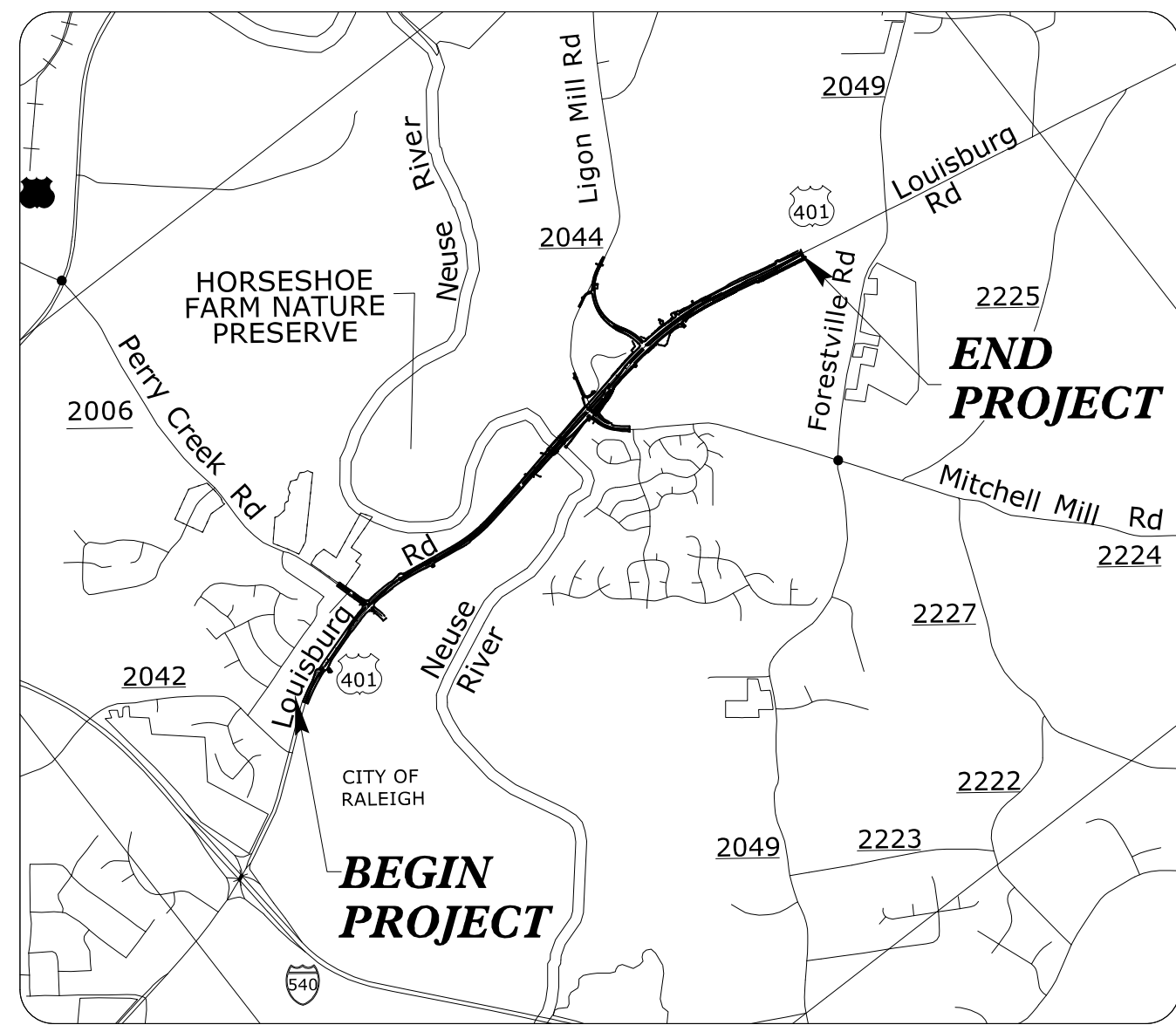
UTILITIES BY OTHERS PLANS WAKE COUNTY

LOCATION: US 401 (LOUISBURG RD) AT SR 2044 (LIGON MILL RD) / SR 2224 (MITCHELL MILL RD) AND SR 2006 (PERRY CREEK ROAD) INTERSECTION IMPROVEMENTS

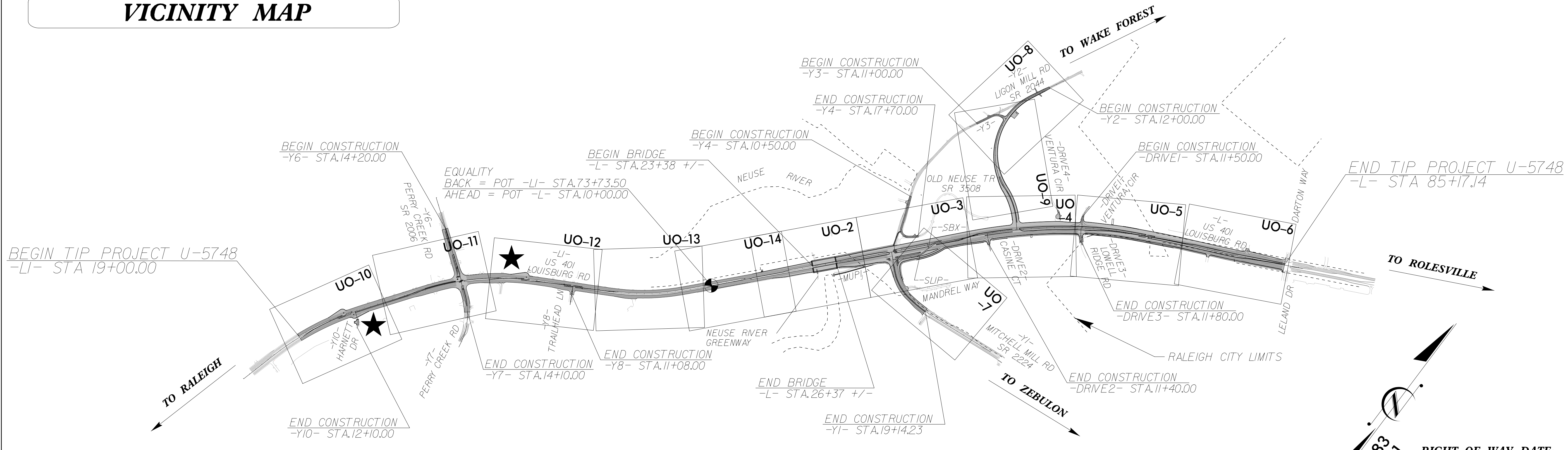
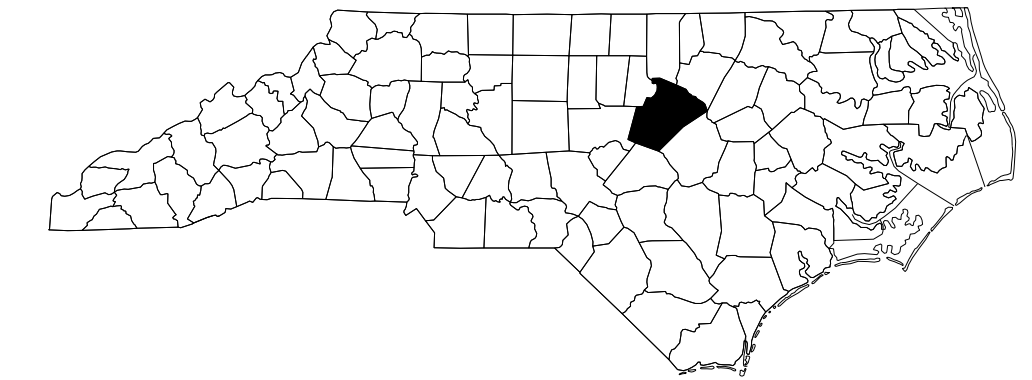
TYPE OF WORK: UTILITIES BY OTHERS RELOCATIONS

Table with T.I.P. NO. U-5748 and SHEET NO. UO-1

NOTE: ALL UTILITY WORK SHOWN ON THIS SHEET WILL BE DONE BY OTHERS. NO PAYMENT WILL BE MADE TO THE CONTRACTOR FOR UTILITY WORK SHOWN ON THIS SHEET.

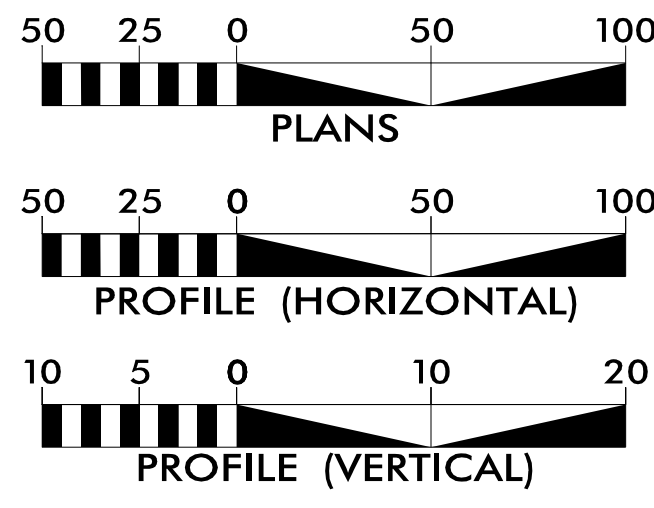


VICINITY MAP



RIGHT OF WAY DATE: JANUARY 8, 2021
LETTING DATE: JULY 18, 2023
NAD 83
NA 2011

GRAPHIC SCALES



INDEX OF SHEETS

Table with SHEET NO. and DESCRIPTION columns, listing UO-1 as TITLE SHEET and UO-2 THRU UO-14 as UBO PLAN SHEETS.

UTILITY OWNERS WITH CONFLICTS

- (A) POWER DISTRIBUTION - DUKE ENERGY
(B) POWER DISTRIBUTION - WAKE EMC
(C) CATV - CHARTER
(D) TELECOM - AT&T
(E) NATURAL GAS - DOMINION ENERGY

PREPARED IN THE OFFICE OF: AECOM
AECOM TECHNICAL SERVICES OF NORTH CAROLINA, INC.
5438 WADE PARK BLVD, SUITE 200, RALEIGH, NC 27607
919-461-1100
F - 0342
Gary Swinson PROJECT UTILITY COORDINATOR

DIVISION OF HIGHWAYS UTILITIES UNIT
1555 MAIL SERVICES CENTER
RALEIGH NC 27699-1555
PHONE (919) 707-6690
FAX (919) 250-4151
Amy York UTILITIES REGIONAL ENGINEER
Ali Kochecki, PE UTILITIES ENGINEER
Dayton Martin UTILITIES AREA COORDINATOR
Tanga Sampson UTILITIES COORDINATOR

MARK & DEBORAH
DB 8304 PG 170
MB 1978 PG 92

UTILITIES BY OTHERS

ALL PROPOSED UTILITY WORK SHOWN ON THIS SHEET WILL BE DONE BY OTHERS. NO PAYMENT WILL BE MADE TO THE CONTRACTOR FOR PROPOSED UTILITY WORK SHOWN ON THIS SHEET.

0402 TOP=201.4 INV=195.3	0409 TOP=199.7 INV=192.5	0417 TOP=199.9 INV=196.5	0422 INV=188.1	0427 TOP=201.6 INV=198.6	0432 TOP=203.3 INV=200.2	0437 TOP=200.8 INV=197.8	0442 INV=185.7
0403 TOP=200.3 INV=194.7	0410 TOP=199.6 INV=192.0	0418 TOP=199.6 INV=195.6	0423 TOP=199.7 INV=196.2	0428 TOP=201.4 INV=198.2	0433 TOP=203.0 INV=199.7	0438 TOP=201.1 INV=196.3	0443 INV=185.3
0404 TOP=200.4 INV=194.2	0411 TOP=199.5 INV=195.2	0419 TOP=199.5 INV=195.2	0424 INV=186.1	0429 TOP=201.2 INV=197.8	0434 TOP=201.5 INV=197.8	0439 TOP=187.6 INV=183.2	
0405 TOP=200.0 INV=193.7	0412 TOP=200.2 INV=198.9	0420 TOP=199.5 INV=195.1	0425 TOP=202.8 INV=199.2	0430 TOP=200.9 INV=197.1	0435 TOP=201.4 INV=197.5	0440 TOP=200.8 INV=197.8	
0406 TOP=199.7 INV=193.2	0413 TOP=200.9 INV=198.2	0421 TOP=199.5 INV=195.0	0426 TOP=202.0 INV=199.0	0431 INV=187.00	0436 TOP=201.2 INV=196.6	0441 INV=182.7	
0407 TOP=199.5 INV=192.7	0414 TOP=201.2 INV=198.2						
0408 TOP=199.5 INV=192.7	0415 INV=197.4						
	0416 TOP=200.2 INV=196.9						

PROPOSED DUKE ENERGY O/H POWER, AT&T TEL, NCDOT & COR FO

PROPOSED DUKE ENERGY O/H POWER, AT&T TEL, CHARTER CATV, NCDOT & COR FO

PROPOSED NCDOT & COR FO

PROPOSED DUKE ENERGY O/H POWER, AT&T TEL & CHARTER CATV

MATCHLINE - 16+00.00
SEE SHEET U0-14

MATCHLINE - 30+00
SEE SHEET U0-3

8:23:14 AM
 C:\Users\j...
 ...orking\ae..._no...2020\dms38379\U5748_uo_psh04.dgn

CITY OF RALEIGH
DB 8644 PG 809
MB 2002 PG 23

CITY OF RALEIGH
DB 8644 PG 809
MB 1982 PG 146
MB 2002 PG 23

NEUSE CROSSING
HOMEOWNERS ASSN. INC.
DB 4718 PG 935
MB 1990 PG 627

PERMANENT COMMON OPEN SPACE
NEUSE CROSSING
HOMEOWNERS ASSN. INC.
DB 6844 PG 756
MB 1992 PG 1333

Prepared in the Office of:

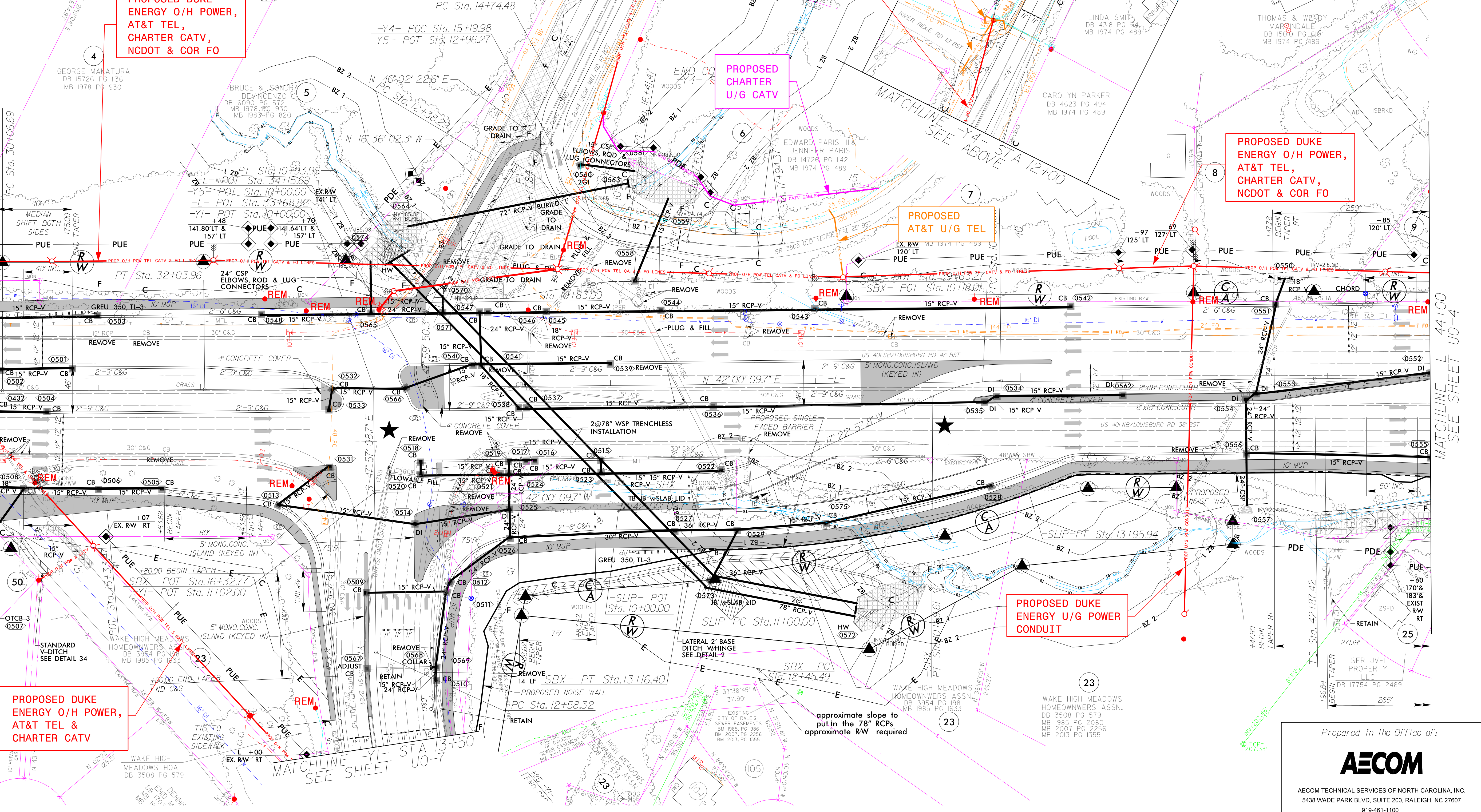


AECOM TECHNICAL SERVICES OF NORTH CAROLINA, INC.
5438 WADE PARK BLVD, SUITE 200, RALEIGH, NC 27607
919-461-1100
F-0342

UTILITIES BY OTHERS

ALL PROPOSED UTILITY WORK SHOWN ON THIS SHEET WILL BE DONE BY OTHERS. NO PAYMENT WILL BE MADE TO THE CONTRACTOR FOR PROPOSED UTILITY WORK SHOWN ON THIS SHEET.

0501 TOP=203.1 INV=200.1	0511 TOP=203.6 INV=199.8	0520 TOP=202.3 INV=199.3	0533 TOP=203.6 INV=200.6	0545 TOP=202.3 INV=199.0	0562 TOP=216.1 INV=213.0
0502 TOP=202.9 INV=199.7	0512 TOP=203.3 INV=199.6	0521 TOP=201.9 INV=198.9	0534 TOP=201.9 INV=208.7	0546 TOP=202.1 INV=198.7	0563 TOP=202.5 INV=197.4
0503 TOP=202.8 INV=199.8	0513 TOP=202.1 INV=199.1	0522 TOP=203.5 INV=200.5	0535 TOP=202.5 INV=208.7	0547 TOP=202.1 INV=197.9	0564 TOP=198.5 INV=188.9
0504 TOP=203.5 INV=200.5	0514 TOP=203.2 INV=198.4	0523 TOP=202.0 INV=199.0	0536 TOP=203.9 INV=200.9	0548 TOP=198.6 INV=195.6	0565 TOP=202.8 INV=199.3
0505 TOP=202.6 INV=199.6	0515 TOP=202.4 INV=199.4	0524 TOP=201.8 INV=198.0	0537 TOP=202.8 INV=199.8	0549 TOP=194.7 INV=195.6	0566 TOP=202.8 INV=201.5
0506 TOP=202.5 INV=199.3	0516 TOP=202.2 INV=199.2	0525 TOP=202.0 INV=197.2	0538 TOP=202.8 INV=199.5	0550 TOP=203.6 INV=218.0	0567 TOP=204.9 INV=203.6
0507 TOP=201.4 INV=198.7	0517 TOP=202.2 INV=199.1	0526 TOP=200.9 INV=196.6	0539 TOP=203.3 INV=200.3	0551 TOP=202.8 INV=223.7	0568 TOP=207.7 INV=202.8
0508 TOP=202.0 INV=198.2	0518 TOP=202.6 INV=199.6	0527 TOP=202.9 INV=195.2	0540 TOP=202.8 INV=199.0	0552 TOP=202.6 INV=223.4	0569 TOP=202.2 INV=199.1
0509 TOP=206.6 INV=203.6	0519 TOP=202.2 INV=199.0	0528 TOP=211.3 INV=208.3	0541 TOP=202.8 INV=198.2	0553 TOP=202.6 INV=216.6	0570 TOP=202.2 INV=197.8
0510 TOP=208.6 INV=204.9		0529 TOP=203.8 INV=194.9	0542 TOP=214.4 INV=211.4	0554 TOP=221.3 INV=216.6	
			0543 TOP=206.3 INV=203.3	0555 TOP=226.4 INV=223.4	
			0544 TOP=203.4 INV=200.4	0556 TOP=220.7 INV=213.4	
			0548 TOP=202.9 INV=199.9	0558 TOP=198.6 INV=195.6	
			0549 TOP=202.7 INV=199.7		



PROPOSED DUK E ENERGY O/H POWER, AT&T TEL & CHARTER CATV

PROPOSED CHARTER U/G CATV

PROPOSED AT&T O/H TEL & CHARTER CATV

PROPOSED AT&T U/G TEL

PROPOSED DUK E ENERGY O/H POWER, AT&T TEL, CHARTER CATV, NCDOT & COR FO

PROPOSED AT&T U/G TEL

PROPOSED DUK E ENERGY U/G POWER CONDUIT

approximate slope to put in the 78" RCPs
approximate RW required

Prepared in the Office of:



AECOM TECHNICAL SERVICES OF NORTH CAROLINA, INC.
5438 WADE PARK BLVD, SUITE 200, RALEIGH, NC 27607
919-461-1100
F-0342

8:28:02 AM No. 2020.dms38379\U5748_uo_psh05.dgn

UTILITIES BY OTHERS

ALL PROPOSED UTILITY WORK SHOWN ON THIS SHEET WILL BE DONE BY OTHERS. NO PAYMENT WILL BE MADE TO THE CONTRACTOR FOR PROPOSED UTILITY WORK SHOWN ON THIS SHEET.

0619	TOP=233.3 INV=229.8	0620	TOP=232.4 INV=230.2	0621	TOP=232.0 INV=227.1	0623	TOP=230.6 INV=227.5	0630	TOP=261.3 INV=250.2	0637	INV=232.0
0626	TOP=248.9 INV=241.2	0627	TOP=256.6 INV=251.1	0622	TOP=256.6 INV=221.4	0624	TOP=229.0 INV=225.9	0631	TOP=258.5 INV=248.6	0638	INV=243.5
0613	TOP=231.9 INV=227.6	0628	TOP=260.0 INV=251.0	0615	TOP=247.3 INV=244.3	0625	TOP=248.7 INV=241.9	0632	TOP=258.5 INV=242.0	0639	INV=230.8
0614	TOP=253.3 INV=250.5	0630	TOP=261.3 INV=256.7	0616	TOP=249.2 INV=243.3	0625	TOP=248.7 INV=241.9	0633	TOP=254.4 INV=244.9	0643	TOP=256.7 INV=254.1
0608	TOP=241.2 INV=233.4	0631	TOP=258.5 INV=255.3	0617	TOP=243.2 INV=240.0	0618	TOP=236.5 INV=233.2	0634	TOP=258.4 INV=255.4	0635	TOP=256.7 INV=254.1
							0636	TOP=254.8 INV=251.8			

PROPOSED DUKE ENERGY O/H POWER, AT&T TEL, CHARTER CATV, NCDOT & COR FO

PROPOSED DUKE ENERGY O/H POWER, AT&T TEL, CHARTER CATV, NCDOT & COR FO

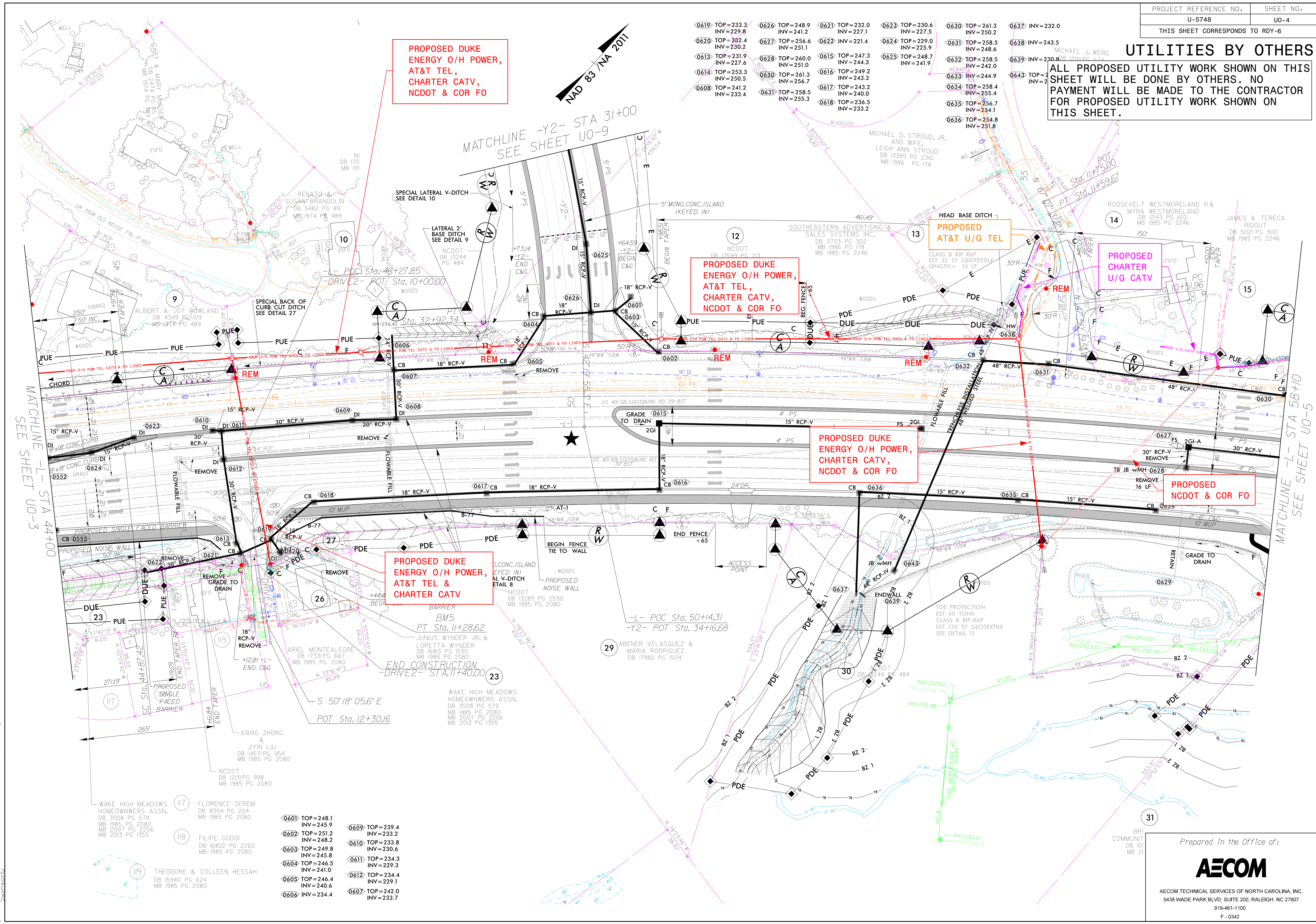
PROPOSED DUKE ENERGY O/H POWER, CHARTER CATV, NCDOT & COR FO

PROPOSED DUKE ENERGY O/H POWER, AT&T TEL & CHARTER CATV

PROPOSED NCDOT & COR FO

PROPOSED CHARTER U/G CATV

PROPOSED AT&T U/G TEL



MATCHLINE -L- STA 44+00
SEE SHEET U0-3

MATCHLINE -L- STA 58+10
SEE SHEET U0-5

MATCHLINE -Y2- STA 31+00
SEE SHEET U0-9

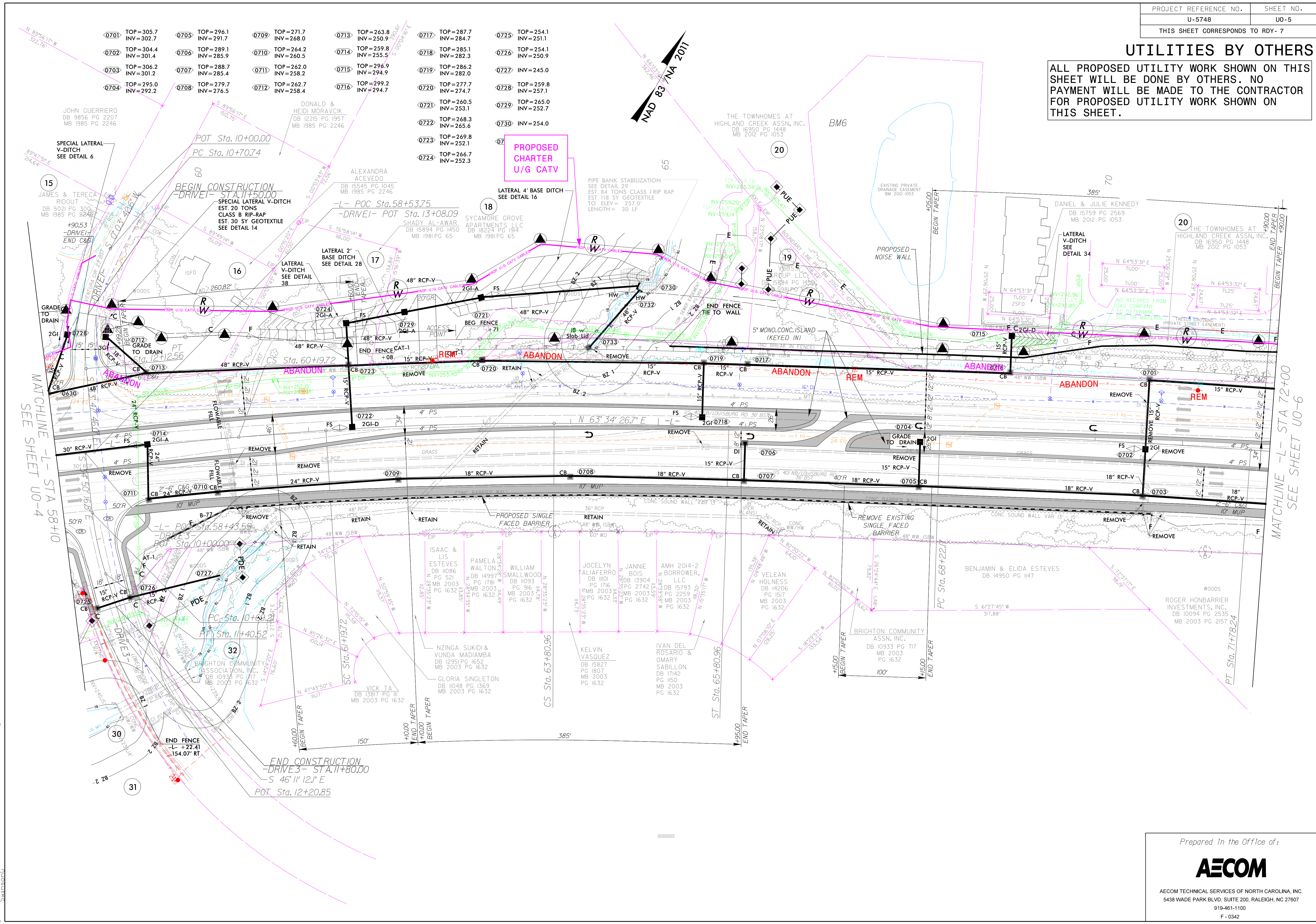
8:35:45 AM No. 2020\dms\38379\U5748_uo_psh06.dgn
C:\swinsoc

0601	TOP=248.1 INV=245.9	0609	TOP=239.4 INV=233.2
0602	TOP=251.2 INV=248.2	0610	TOP=233.8 INV=230.6
0603	TOP=249.8 INV=245.8	0611	TOP=234.3 INV=229.3
0604	TOP=246.5 INV=241.0	0612	TOP=234.4 INV=229.1
0605	TOP=246.4 INV=240.6	0607	TOP=242.0 INV=233.7
0606	INV=234.4		

0601	TOP=248.1 INV=245.9	0609	TOP=239.4 INV=233.2
0602	TOP=251.2 INV=248.2	0610	TOP=233.8 INV=230.6
0603	TOP=249.8 INV=245.8	0611	TOP=234.3 INV=229.3
0604	TOP=246.5 INV=241.0	0612	TOP=234.4 INV=229.1
0605	TOP=246.4 INV=240.6	0607	TOP=242.0 INV=233.7
0606	INV=234.4		

UTILITIES BY OTHERS

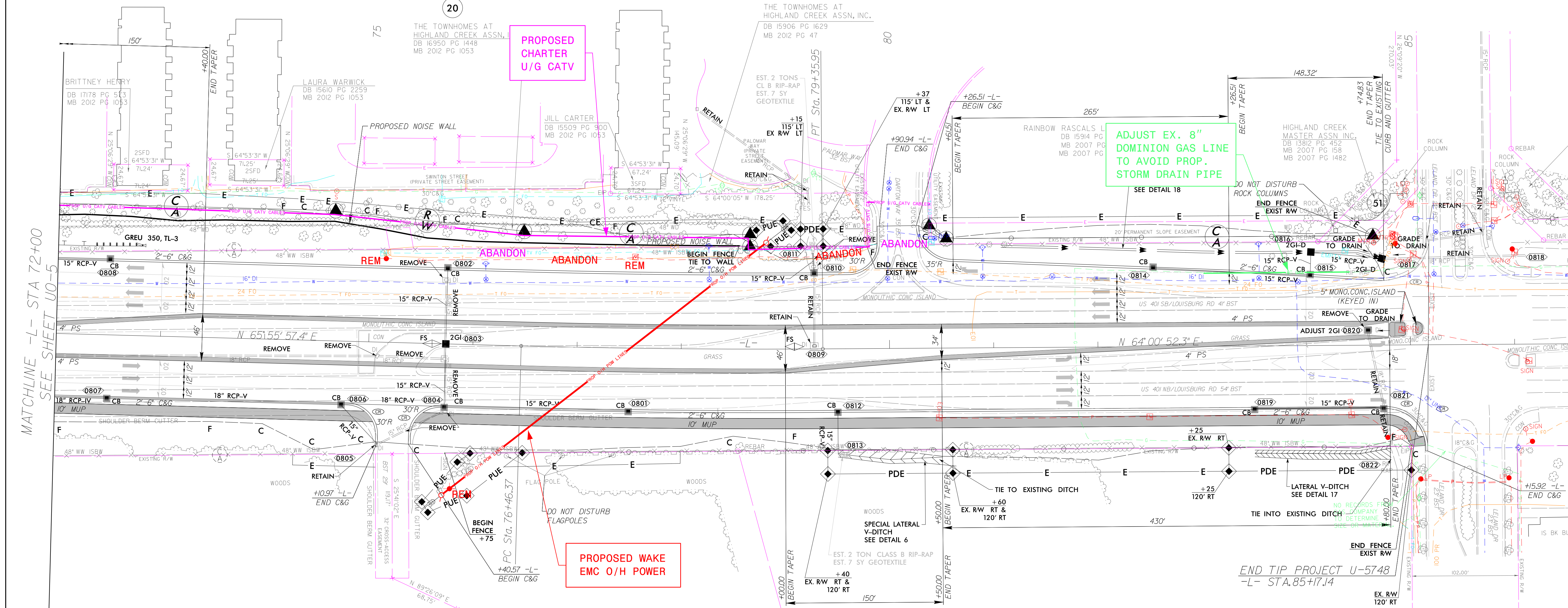
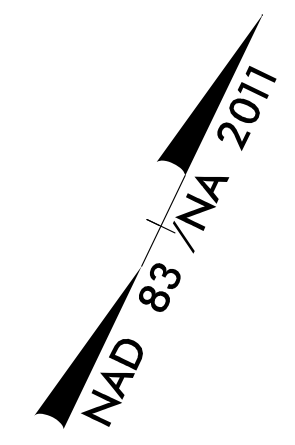
ALL PROPOSED UTILITY WORK SHOWN ON THIS SHEET WILL BE DONE BY OTHERS. NO PAYMENT WILL BE MADE TO THE CONTRACTOR FOR PROPOSED UTILITY WORK SHOWN ON THIS SHEET.



8:42:39 AM No. 2020\dms\38379\U5748_uo_psh07.dgn

UTILITIES BY OTHERS

ALL PROPOSED UTILITY WORK SHOWN ON THIS SHEET WILL BE DONE BY OTHERS. NO PAYMENT WILL BE MADE TO THE CONTRACTOR FOR PROPOSED UTILITY WORK SHOWN ON THIS SHEET.



MATCHLINE -L- STA 72+00
SEE SHEET U0-5

PROPOSED CHARTER U/G CATV

ADJUST EX. 8" DOMINION GAS LINE TO AVOID PROP. STORM DRAIN PIPE
SEE DETAIL 18

PROPOSED WAKE EMC O/H POWER

8:47:25 AM No. 2020\dms\38379\U5748_u0_psh08.dgn

Ø801	TOP = 328.7 INV = 325.7	Ø807	TOP = 313.7 INV = 310.5
Ø802	TOP = 324.6 INV = 321.6	Ø808	TOP = 313.2 INV = 310.2
Ø803	TOP = 322.2 INV = 319.5	Ø809	TOP = 328.7 INV = 325.8
Ø804	TOP = 325.0 INV = 318.9		
Ø805	TOP = 323.9 INV = 321.2		
Ø806	TOP = 322.2 INV = 318.4		

Ø810	TOP = 331.1 INV = 325.2	Ø816	TOP = 329.0 INV = 327.1
Ø811	INV = 324.9	Ø817	TOP = 328.4 INV = 326.3
Ø812	TOP = 331.5 INV = 328.5	Ø819	TOP = 330.9 INV = 327.9
Ø813	INV = 327.2	Ø820	TOP = 329.6 INV = 324.6
Ø814	TOP = 331.2 INV = 328.2	Ø821	TOP = 330.0 INV = 323.7
Ø815	TOP = 330.3 INV = 327.3		

Prepared in the Office of:

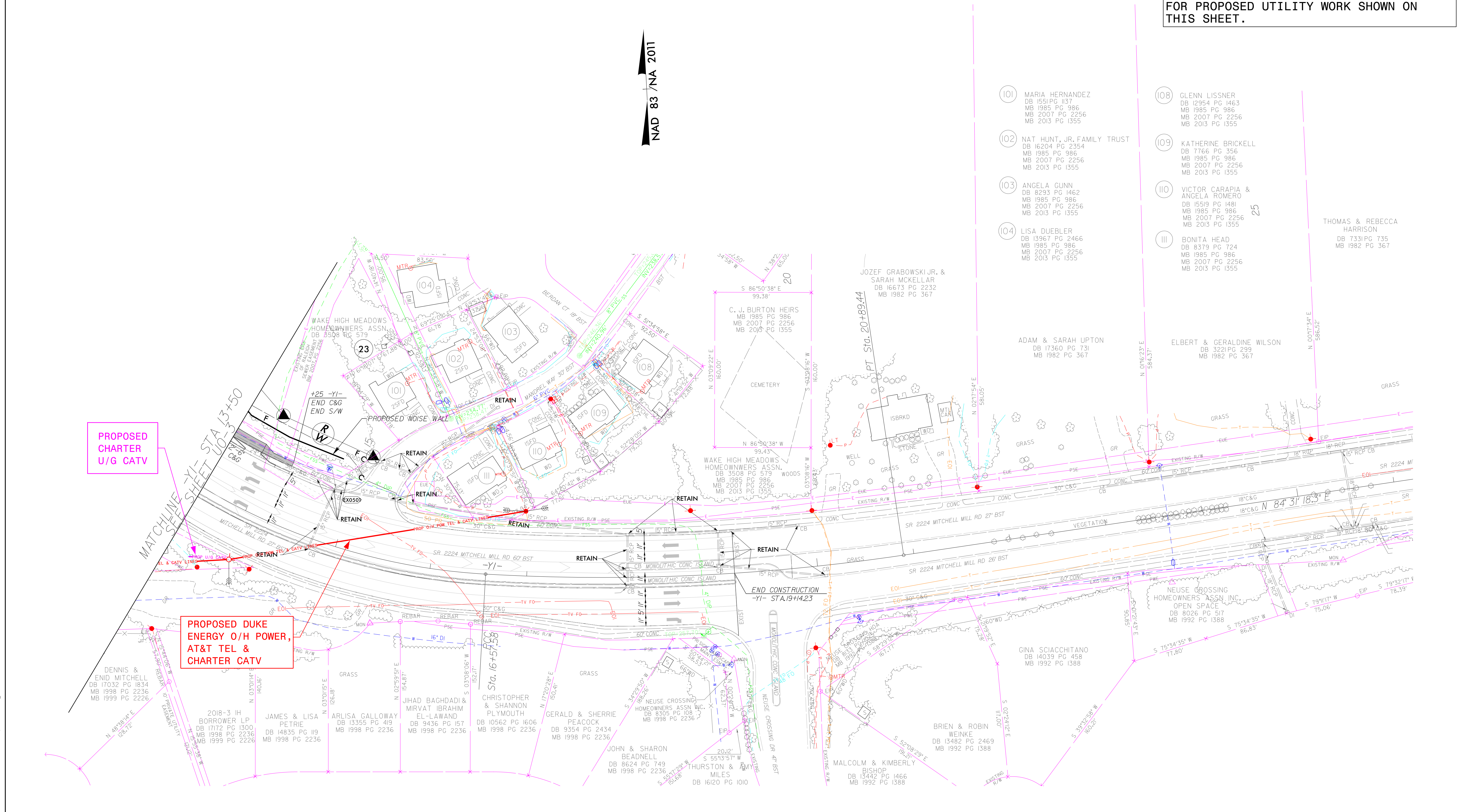


AECOM TECHNICAL SERVICES OF NORTH CAROLINA, INC.
5438 WADE PARK BLVD, SUITE 200, RALEIGH, NC 27607
919-461-1100
F - 0342

UTILITIES BY OTHERS

ALL PROPOSED UTILITY WORK SHOWN ON THIS SHEET WILL BE DONE BY OTHERS. NO PAYMENT WILL BE MADE TO THE CONTRACTOR FOR PROPOSED UTILITY WORK SHOWN ON THIS SHEET.

NAD 83 / NA 2011



PROPOSED CHARTER U/G CATV

PROPOSED DUKE ENERGY O/H POWER, AT&T TEL & CHARTER CATV

101 MARIA HERNANDEZ
DB 1551 PG 137
MB 1985 PG 986
MB 2007 PG 2256
MB 2013 PG 1355

102 NAT HUNT, JR. FAMILY TRUST
DB 16204 PG 2354
MB 1985 PG 986
MB 2007 PG 2256
MB 2013 PG 1355

103 ANGELA GUNN
DB 8293 PG 1462
MB 1985 PG 986
MB 2007 PG 2256
MB 2013 PG 1355

104 LISA DUEBLER
DB 13967 PG 2466
MB 1985 PG 986
MB 2007 PG 2256
MB 2013 PG 1355

108 GLENN LISSNER
DB 12954 PG 1463
MB 1985 PG 986
MB 2007 PG 2256
MB 2013 PG 1355

109 KATHERINE BRICKELL
DB 7766 PG 356
MB 1985 PG 986
MB 2007 PG 2256
MB 2013 PG 1355

110 VICTOR CARAPIA & ANGELA ROMERO
DB 15519 PG 1481
MB 1985 PG 986
MB 2007 PG 2256
MB 2013 PG 1355

111 BONITA HEAD
DB 8379 PG 724
MB 1985 PG 986
MB 2007 PG 2256
MB 2013 PG 1355

THOMAS & REBECCA HARRISON
DB 7331 PG 735
MB 1982 PG 367

ADAM & SARAH UPTON
DB 17360 PG 731
MB 1982 PG 367

ELBERT & GERALDINE WILSON
DB 3221 PG 299
MB 1982 PG 367

C. J. BURTON HEIRS
MB 1985 PG 986
MB 2007 PG 2256
MB 2013 PG 1355

JOZEF GRABOWSKI JR. & SARAH MCKELLAR
DB 16673 PG 2232
MB 1982 PG 367

WAKE HIGH MEADOWS HOMEOWNERS ASSN.
DB 3508 PG 573
MB 1985 PG 986
MB 2007 PG 2256
MB 2013 PG 1355

GINA SCIACCHITANO
DB 14039 PG 458
MB 1992 PG 1388

BRIEN & ROBIN WEINKE
DB 13482 PG 2469
MB 1992 PG 1388

MALCOLM & KIMBERLY BISHOP
DB 13442 PG 1466
MB 1992 PG 1388

JOHN & SHARON BEADNELL
DB 8624 PG 749
MB 1998 PG 2236

GERALD & SHERRIE PEACOCK
DB 9354 PG 2434
MB 1998 PG 2236

CHRISTOPHER & SHANNON PLYMOUTH
DB 10562 PG 1606
MB 1998 PG 2236

JIHAD BAGHDADI & MIRVAT IBRAHIM EL-LAWAND
DB 9436 PG 157
MB 1998 PG 2236

JAMES & LISA PETRIE
DB 14835 PG 119
MB 1998 PG 2236

ARLISA GALLOWAY
DB 13355 PG 419
MB 1998 PG 2236

2018-3 IH BORROWER LP
DB 17172 PG 1300
MB 1998 PG 2236
MB 1999 PG 2226

DENNIS & ENID MITCHELL
DB 17032 PG 1834
MB 1998 PG 2236
MB 1999 PG 2226

Prepared in the Office of:



AECOM TECHNICAL SERVICES OF NORTH CAROLINA, INC.
5438 WADE PARK BLVD, SUITE 200, RALEIGH, NC 27607
919-461-1100
F-0342

8:49:54 AM No. 2020\dms\38379\U5748_uo_psh09.dgn

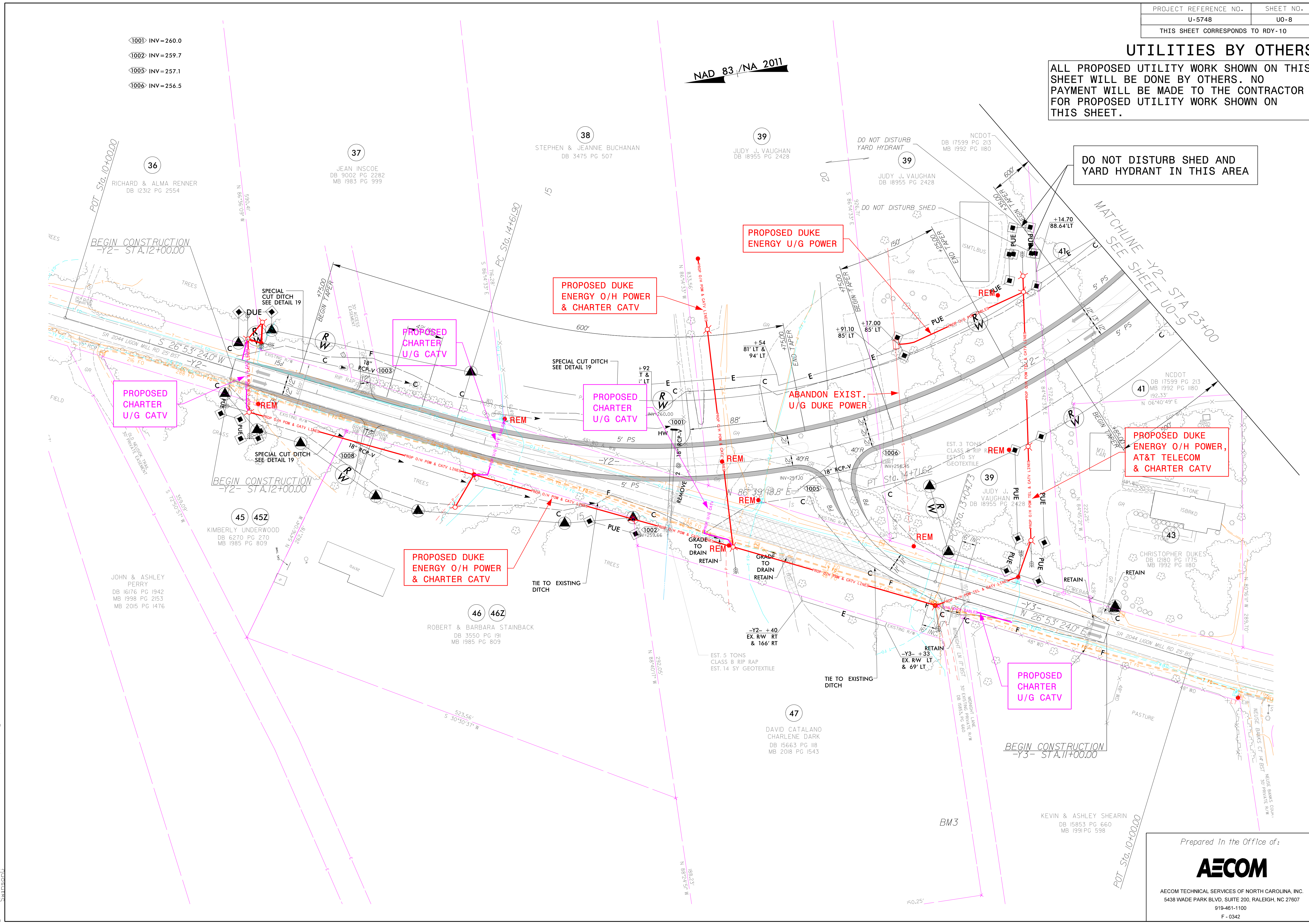
UTILITIES BY OTHERS

ALL PROPOSED UTILITY WORK SHOWN ON THIS SHEET WILL BE DONE BY OTHERS. NO PAYMENT WILL BE MADE TO THE CONTRACTOR FOR PROPOSED UTILITY WORK SHOWN ON THIS SHEET.

DO NOT DISTURB SHED AND YARD HYDRANT IN THIS AREA

- 1001 INV=260.0
- 1002 INV=259.7
- 1005 INV=257.1
- 1006 INV=256.5

NAD 83 / NA 2011



8:52:07 AM 2020/05/15 10:57:48 uo_psh10.dgn

Prepared in the Office of:

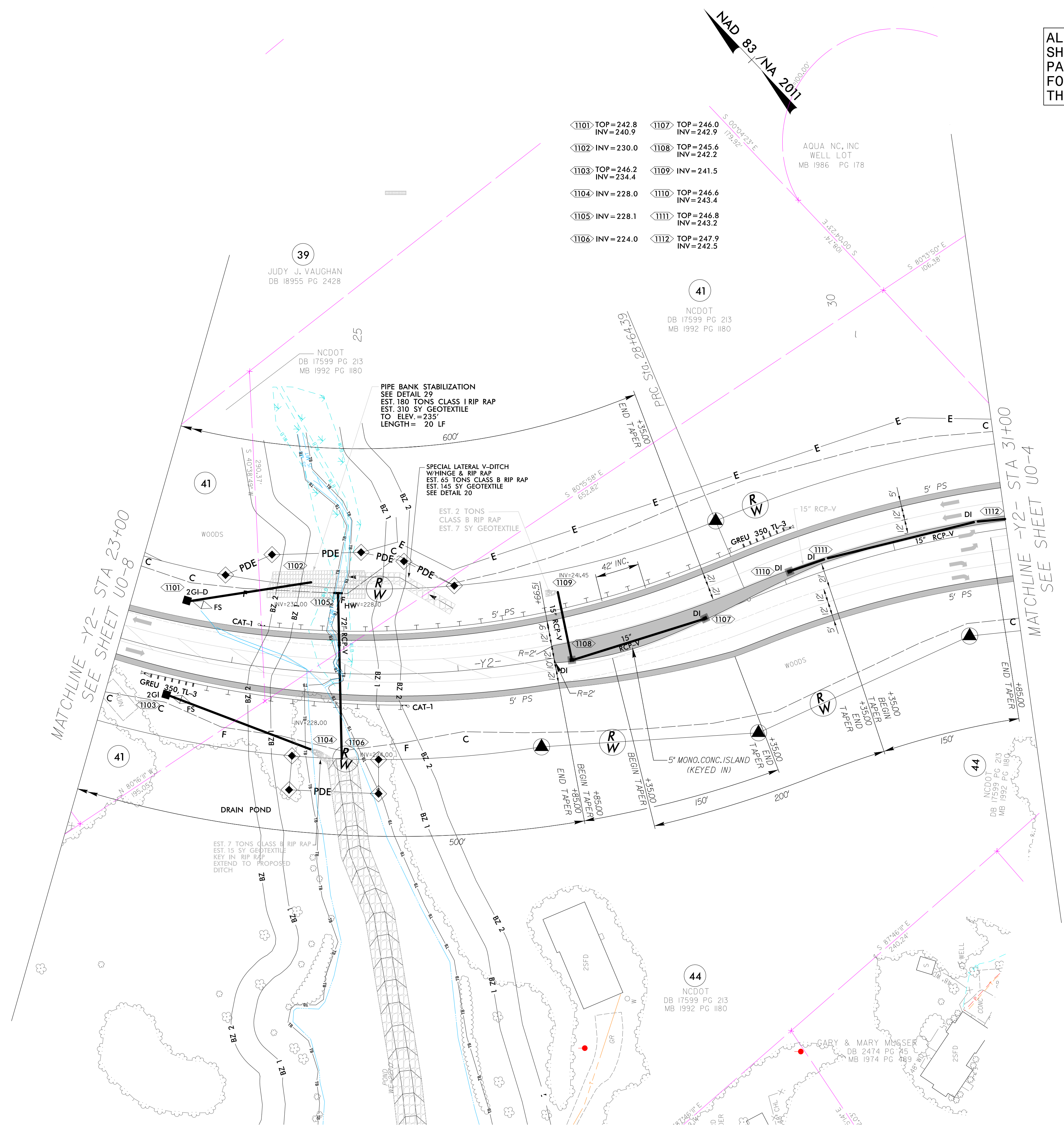


AECOM TECHNICAL SERVICES OF NORTH CAROLINA, INC.
 5438 WADE PARK BLVD, SUITE 200, RALEIGH, NC 27607
 919-461-1100
 F-0342

UTILITIES BY OTHERS

ALL PROPOSED UTILITY WORK SHOWN ON THIS SHEET WILL BE DONE BY OTHERS. NO PAYMENT WILL BE MADE TO THE CONTRACTOR FOR PROPOSED UTILITY WORK SHOWN ON THIS SHEET.

NO APPARENT UTILITIES BY OTHERS CONFLICTS ON THIS SHEET

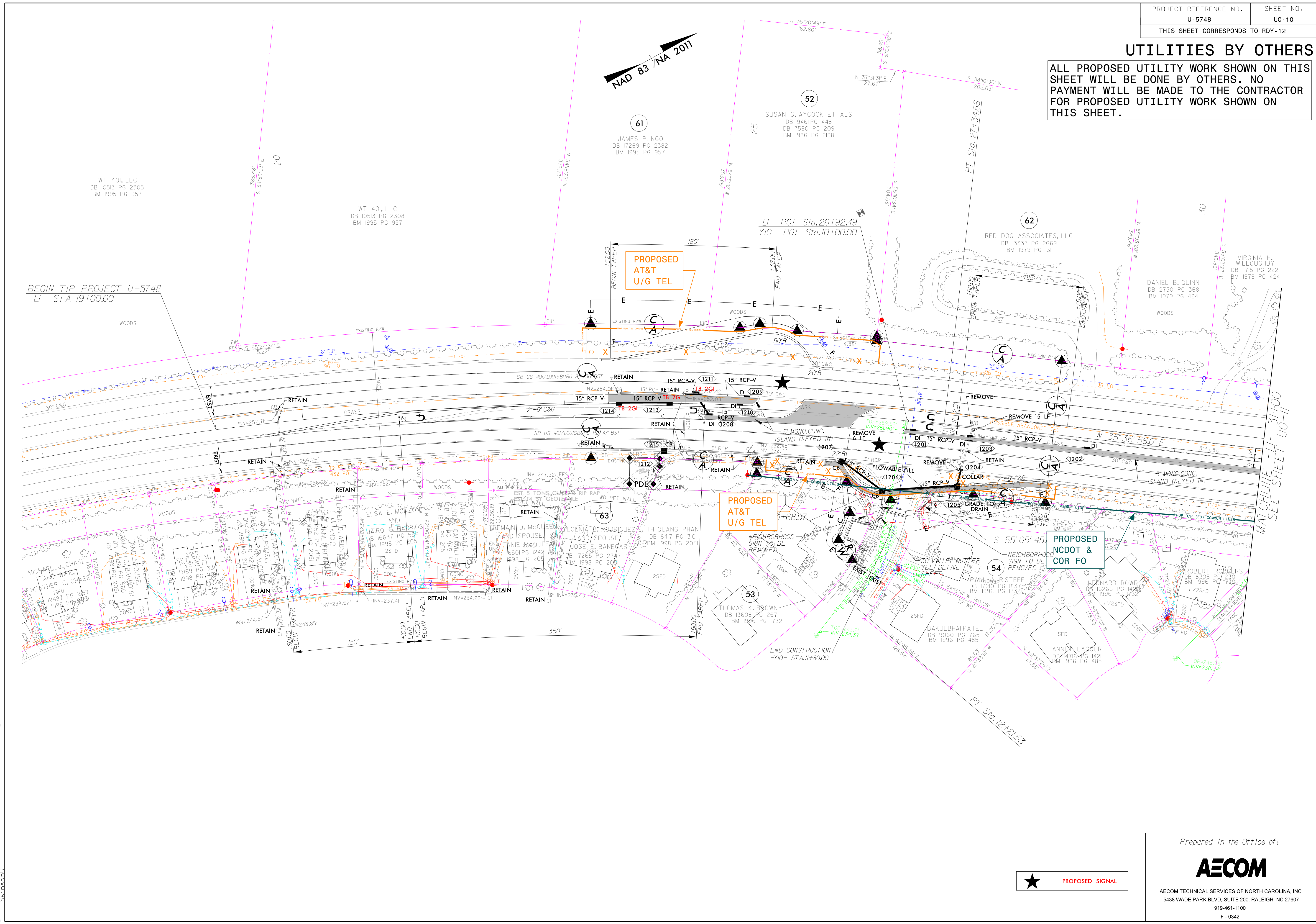


1101	TOP=242.8 INV=240.9	1107	TOP=246.0 INV=242.9
1102	INV=230.0	1108	TOP=245.6 INV=242.2
1103	TOP=246.2 INV=234.4	1109	INV=241.5
1104	INV=228.0	1110	TOP=246.6 INV=243.4
1105	INV=228.1	1111	TOP=246.8 INV=243.2
1106	INV=224.0	1112	TOP=247.9 INV=242.5

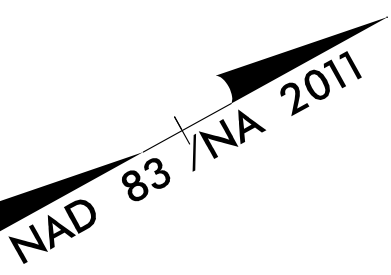
9:00:04 AM
 c:\working\vee\..._2020\dms38379\U5748_uo_eshk11.dgn

UTILITIES BY OTHERS

ALL PROPOSED UTILITY WORK SHOWN ON THIS SHEET WILL BE DONE BY OTHERS. NO PAYMENT WILL BE MADE TO THE CONTRACTOR FOR PROPOSED UTILITY WORK SHOWN ON THIS SHEET.



BEGIN TIP PROJECT U-5748
-LI- STA 19+00.00



MATCHLINE - 31+00 SEE SHEET U0-11

★ PROPOSED SIGNAL

Prepared in the Office of:

AECOM

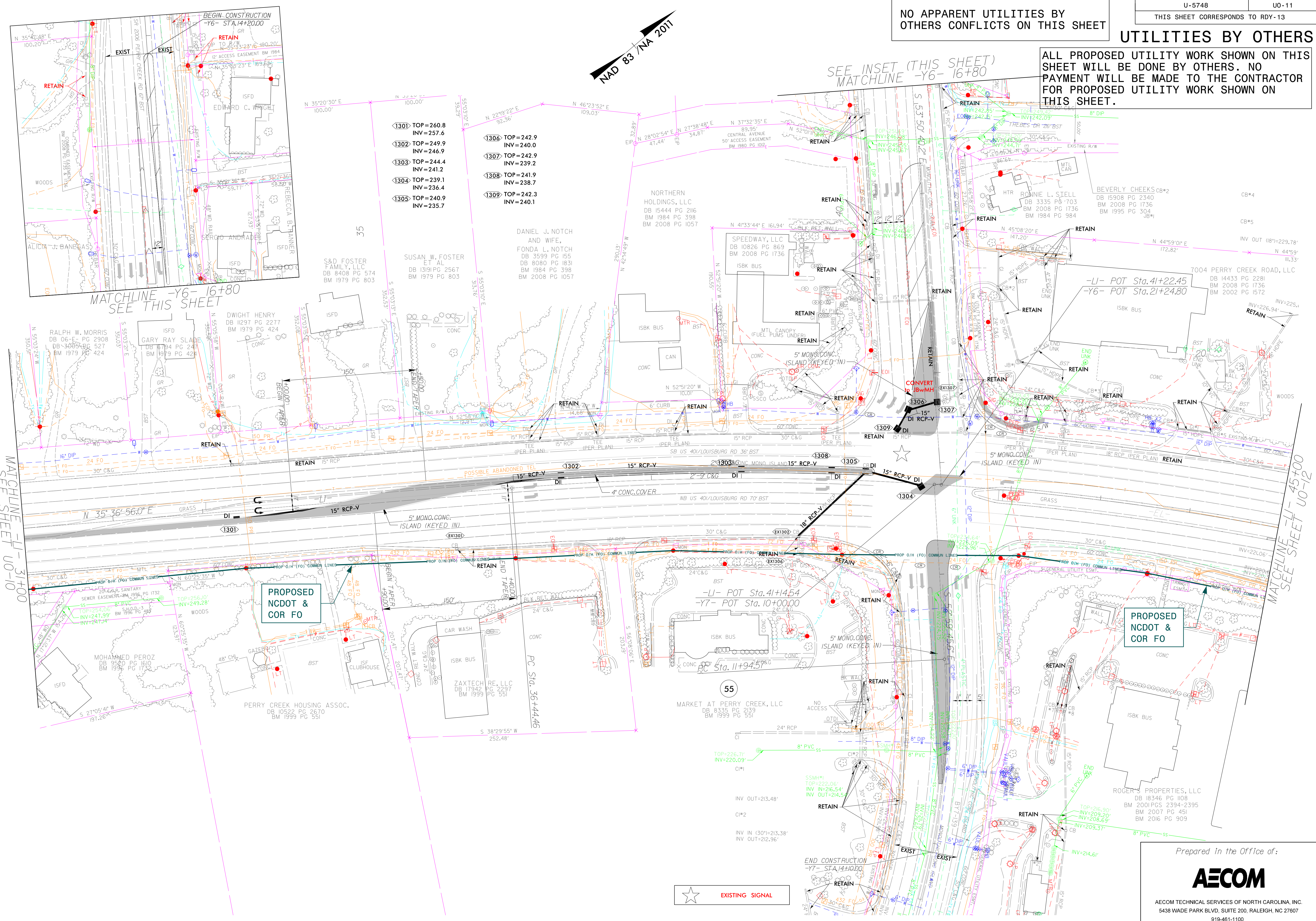
AECOM TECHNICAL SERVICES OF NORTH CAROLINA, INC.
5438 WADE PARK BLVD, SUITE 200, RALEIGH, NC 27607
919-461-1100
F-0342

S:\045331\AM...2020\dms38379\U5748_uo_psh12.dgn

NO APPARENT UTILITIES BY OTHERS CONFLICTS ON THIS SHEET

UTILITIES BY OTHERS

ALL PROPOSED UTILITY WORK SHOWN ON THIS SHEET WILL BE DONE BY OTHERS. NO PAYMENT WILL BE MADE TO THE CONTRACTOR FOR PROPOSED UTILITY WORK SHOWN ON THIS SHEET.



- ◁1301 TOP=260.8
INV=257.6
- ◁1302 TOP=249.9
INV=246.9
- ◁1303 TOP=244.4
INV=241.2
- ◁1304 TOP=239.1
INV=236.4
- ◁1305 TOP=240.9
INV=235.7
- ◁1306 TOP=242.9
INV=240.0
- ◁1307 TOP=242.9
INV=239.2
- ◁1308 TOP=241.9
INV=238.7
- ◁1309 TOP=242.3
INV=240.1

MATCHLINE -U- 3+00
SEE SHEET U0-10

MATCHLINE -Y6- 16+80
SEE THIS SHEET

SEE INSET (THIS SHEET)
MATCHLINE -Y6- 16+80

MATCHLINE -U- 45+00
SEE SHEET U0-12

PROPOSED NCDOT & COR FO

PROPOSED NCDOT & COR FO

★ EXISTING SIGNAL

Prepared in the Office of:

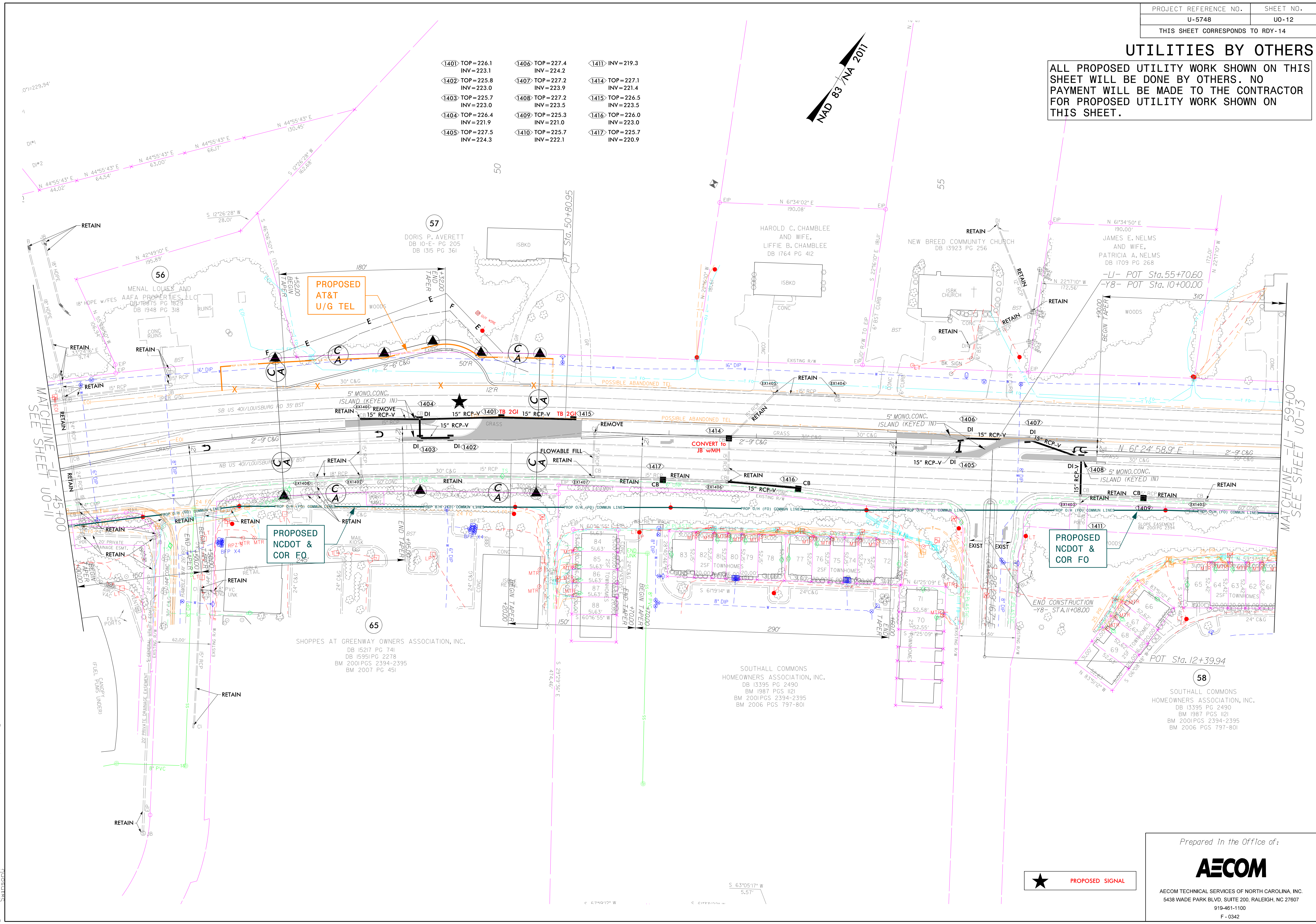
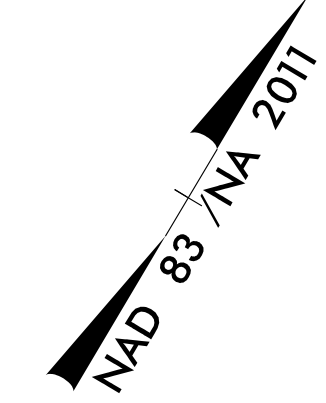


AECOM TECHNICAL SERVICES OF NORTH CAROLINA, INC.
5438 WADE PARK BLVD, SUITE 200, RALEIGH, NC 27607
919-461-1100

UTILITIES BY OTHERS

ALL PROPOSED UTILITY WORK SHOWN ON THIS SHEET WILL BE DONE BY OTHERS. NO PAYMENT WILL BE MADE TO THE CONTRACTOR FOR PROPOSED UTILITY WORK SHOWN ON THIS SHEET.

1401 TOP=226.1 INV=223.1	1406 TOP=227.4 INV=224.2	1411 INV=219.3
1402 TOP=225.8 INV=223.0	1407 TOP=227.2 INV=223.9	1414 TOP=227.1 INV=221.4
1403 TOP=225.7 INV=223.0	1408 TOP=227.2 INV=223.5	1415 TOP=226.5 INV=223.5
1404 TOP=226.4 INV=221.9	1409 TOP=225.3 INV=221.0	1416 TOP=226.0 INV=223.0
1405 TOP=227.5 INV=224.3	1410 TOP=225.7 INV=222.1	1417 TOP=225.7 INV=220.9



MATCHLINE -LI- 45+00
SEE SHEET U0-11

MATCHLINE -LI- 59+00
SEE SHEET U0-13

**PROPOSED AT&T
U/G TEL**

**PROPOSED NCDOT &
COR FO**

**PROPOSED NCDOT &
COR FO**

★ PROPOSED SIGNAL

Prepared in the Office of:



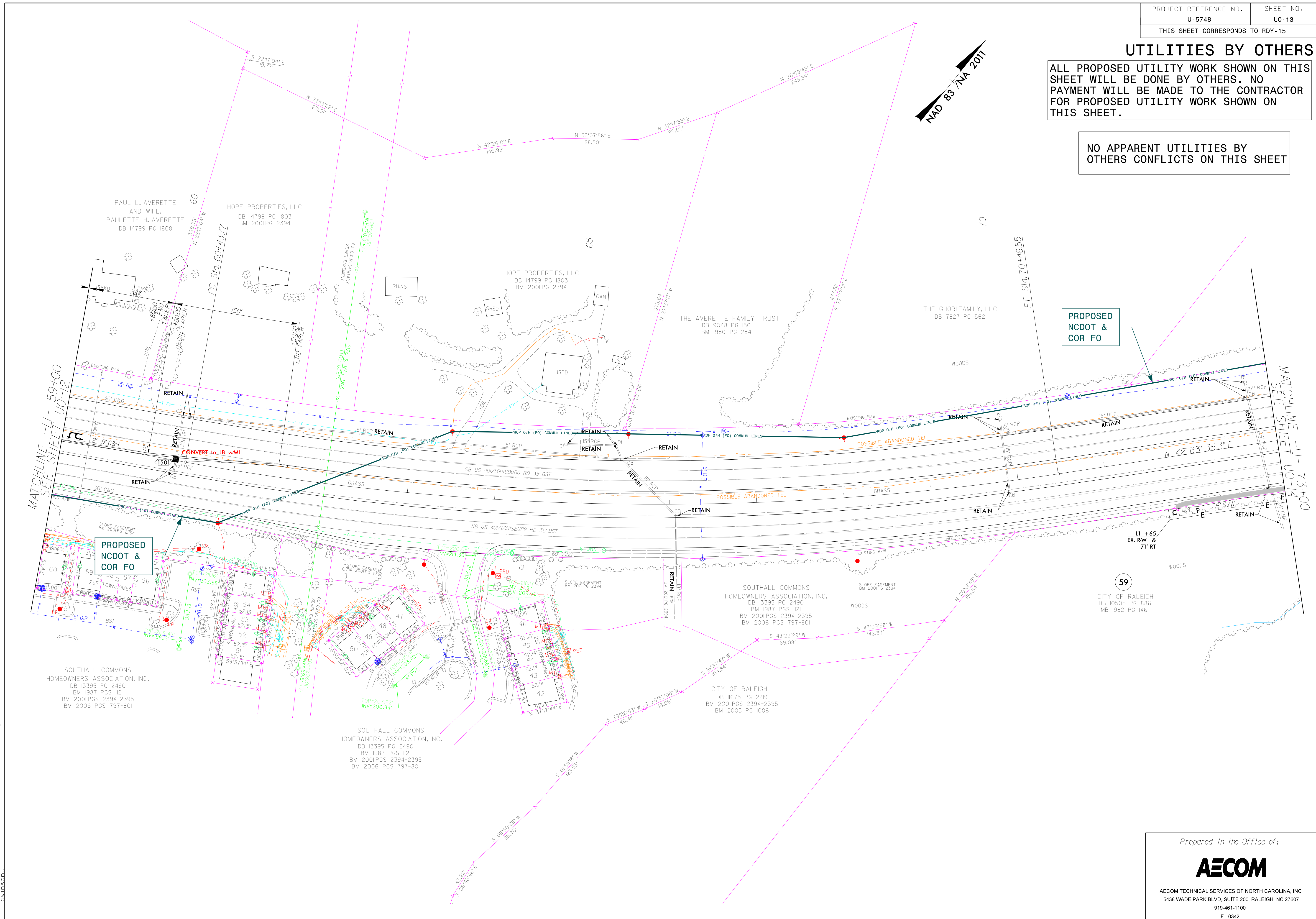
AECOM TECHNICAL SERVICES OF NORTH CAROLINA, INC.
5438 WADE PARK BLVD, SUITE 200, RALEIGH, NC 27607
919-461-1100
F-0342

9:05:54.1 AM No. 2020\dms\38379\U5748_uo_psh14.dgn

UTILITIES BY OTHERS

ALL PROPOSED UTILITY WORK SHOWN ON THIS SHEET WILL BE DONE BY OTHERS. NO PAYMENT WILL BE MADE TO THE CONTRACTOR FOR PROPOSED UTILITY WORK SHOWN ON THIS SHEET.

NO APPARENT UTILITIES BY OTHERS CONFLICTS ON THIS SHEET



MATCHLINE - LI - 59+00
SEE SHEET U0-12

MATCHLINE - LI - 73+00
SEE SHEET U0-14

PROPOSED NCDOT & COR FO

PROPOSED NCDOT & COR FO

59

CITY OF RALEIGH
DB 10505 PG 886
MB 1982 PG 146

SOUTHALL COMMONS HOMEOWNERS ASSOCIATION, INC.
DB 13395 PG 2490
BM 1987 PGS 121
BM 2001 PGS 2394-2395
BM 2006 PGS 797-801

SOUTHALL COMMONS HOMEOWNERS ASSOCIATION, INC.
DB 13395 PG 2490
BM 1987 PGS 121
BM 2001 PGS 2394-2395
BM 2006 PGS 797-801

SOUTHALL COMMONS HOMEOWNERS ASSOCIATION, INC.
DB 13395 PG 2490
BM 1987 PGS 121
BM 2001 PGS 2394-2395
BM 2006 PGS 797-801

CITY OF RALEIGH
DB 11675 PG 2219
BM 2001 PGS 2394-2395
BM 2005 PG 1086

Prepared in the Office of:

AECOM

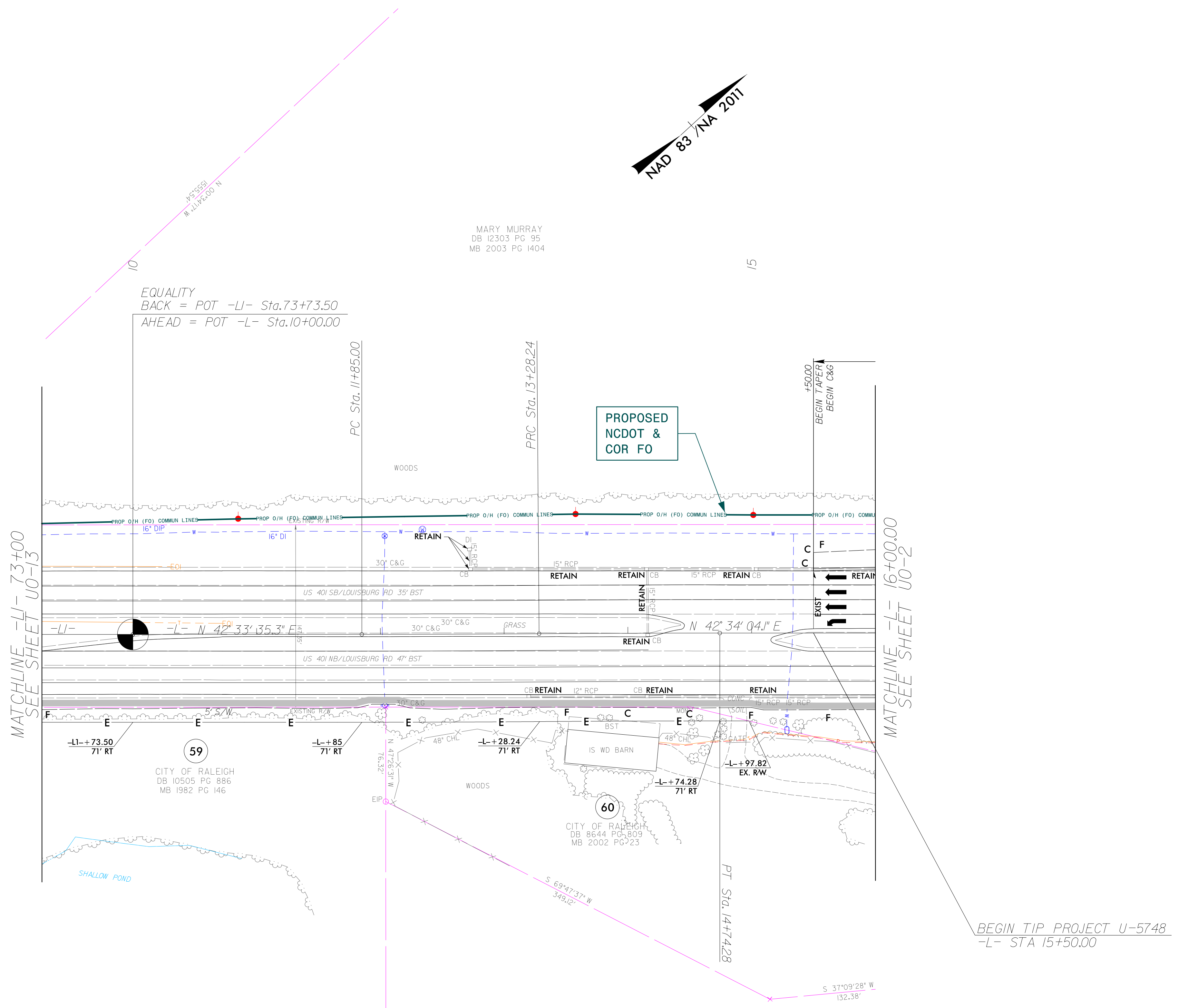
AECOM TECHNICAL SERVICES OF NORTH CAROLINA, INC.
5438 WADE PARK BLVD, SUITE 200, RALEIGH, NC 27607
919-461-1100

s:\0710_AM...2020\dms\38379\U5748_uo_psh\15.dgn
 9:07:10 AM
 1/15/2020

UTILITIES BY OTHERS

ALL PROPOSED UTILITY WORK SHOWN ON THIS SHEET WILL BE DONE BY OTHERS. NO PAYMENT WILL BE MADE TO THE CONTRACTOR FOR PROPOSED UTILITY WORK SHOWN ON THIS SHEET.

NO APPARENT UTILITIES BY OTHERS CONFLICTS ON THIS SHEET



BEGIN TIP PROJECT U-5748
-L- STA 15+50.00

9:08:49 AM 2020\02\16\15748_uo_psh16.dgn