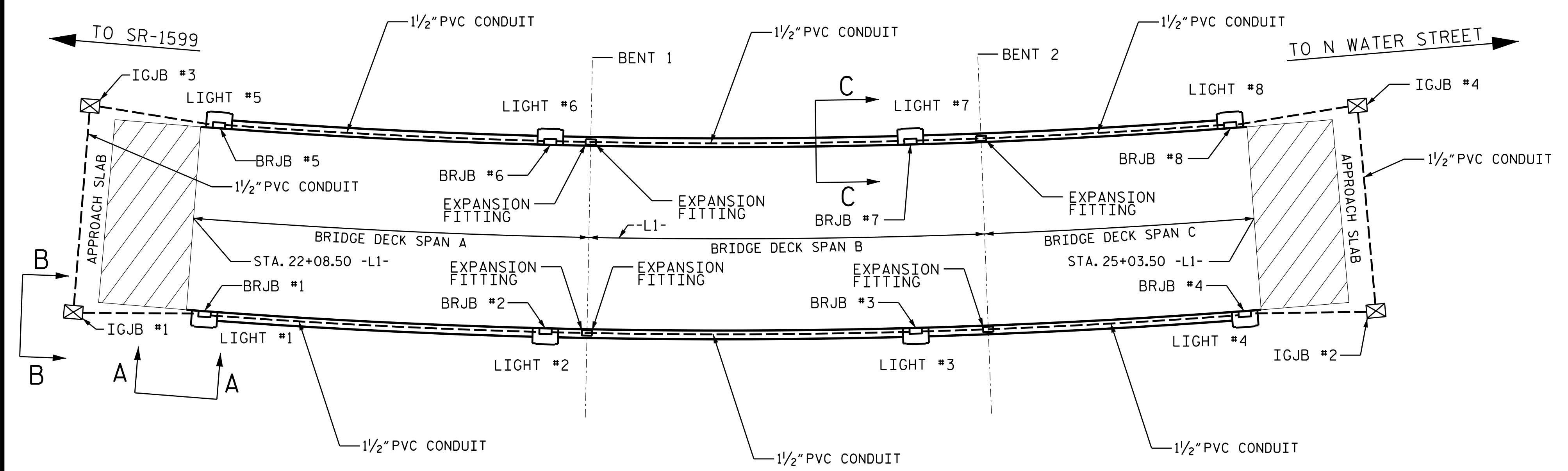


02/03/98

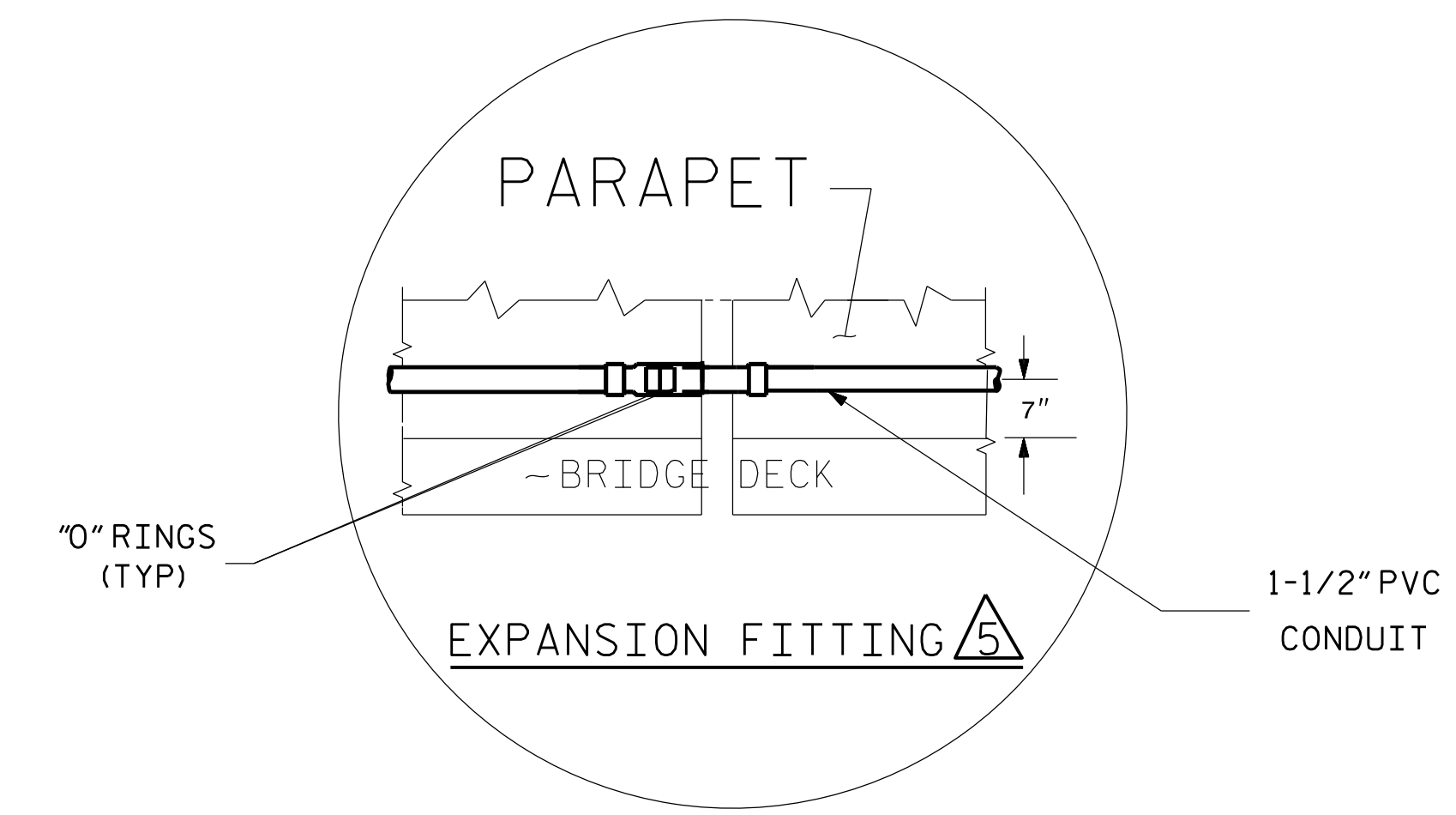
**USE FOR ELECTRICAL CONDUIT SYSTEM ONLY**



- NOTES**
- 1. COORDINATE POWER SERVICE WITH THE CITY.
  - 2. COORDINATE CONNECTION OF CONDUIT WITH OTHERS.
  - 3. SEE STRUCTURE PLANS FOR LOCATION OF LIGHT PEDESTALS.
  - 4. INSTALL ANCHOR BOLTS ACCORDING TO MANUFACTURER'S RECOMMENDATION.
  - 5. PROVIDE EXPANSION FITTING AT ALL EXPANSION JOINTS.

**CONDUIT LAYOUT**

ESTIMATED BILL OF MATERIALS		
UNIT	ITEM	QNTY
EA	IGJB: 12"x11"x18" IN-GROUND JUNCTION BOX	4
EA	BRJB: 12"x12"x4" CAST IRON FLUSH MOUNT JUNCTION BOX	8
EA	RGC TO PVC CONDUIT 1.5" ADAPTOR	4
EA	1-1/2" RGC CLOSE NIPPLE	4
EA	GALVANIZED IRON 1.5" LL CONDUIT BODY WITH COVER & GASKET	2
EA	GALVANIZED IRON 1.5" LR CONDUIT BODY WITH COVER & GASKET	2
EA	1-1/2" ERICKSON COUPLING	4
FT	1-1/2" RGC CONDUIT	20
FT	1-1/2" PVC CONDUIT	800
EA	1-1/2" PVC 90° BELL ELBOW	20
EA	1-1/2" PVC COUPLING	20
EA	1-1/2" PVC EXPANSION FITTINGS	4
FT	PULL LINE	860
SET	POLE MANUFACTURER'S ANCHOR BOLT SET WITH 2 WASHERS & 2 NUTS PER BOLT	8



PROJECT NO. B-5985A  
ROBESON COUNTY  
 STATION: 23+56.00 -L1-

SHEET 1 OF 2

STATE OF NORTH CAROLINA  
 DEPARTMENT OF TRANSPORTATION  
 RALEIGH  
 BRIDGE #125 OVER LUMBER RIVER ON  
 NC 72 E. (W. 2ND. STREET) BETWEEN  
 MARTIN LUTHER KING, JR. DRIVE  
 AND N. WATER STREET

REVISIONS				SHEET NO.
NO.	BY:	DATE:	NO.	DATE:

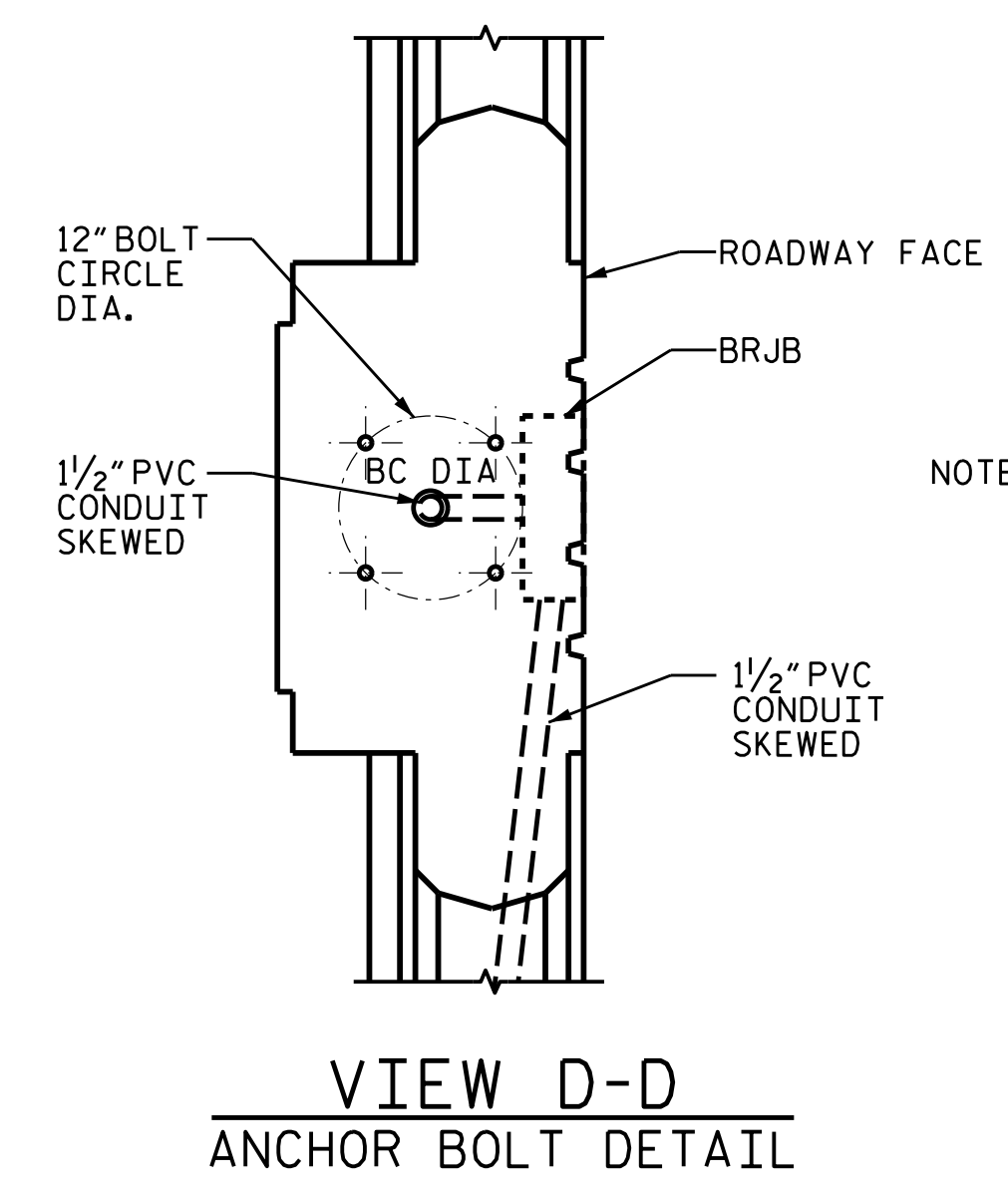
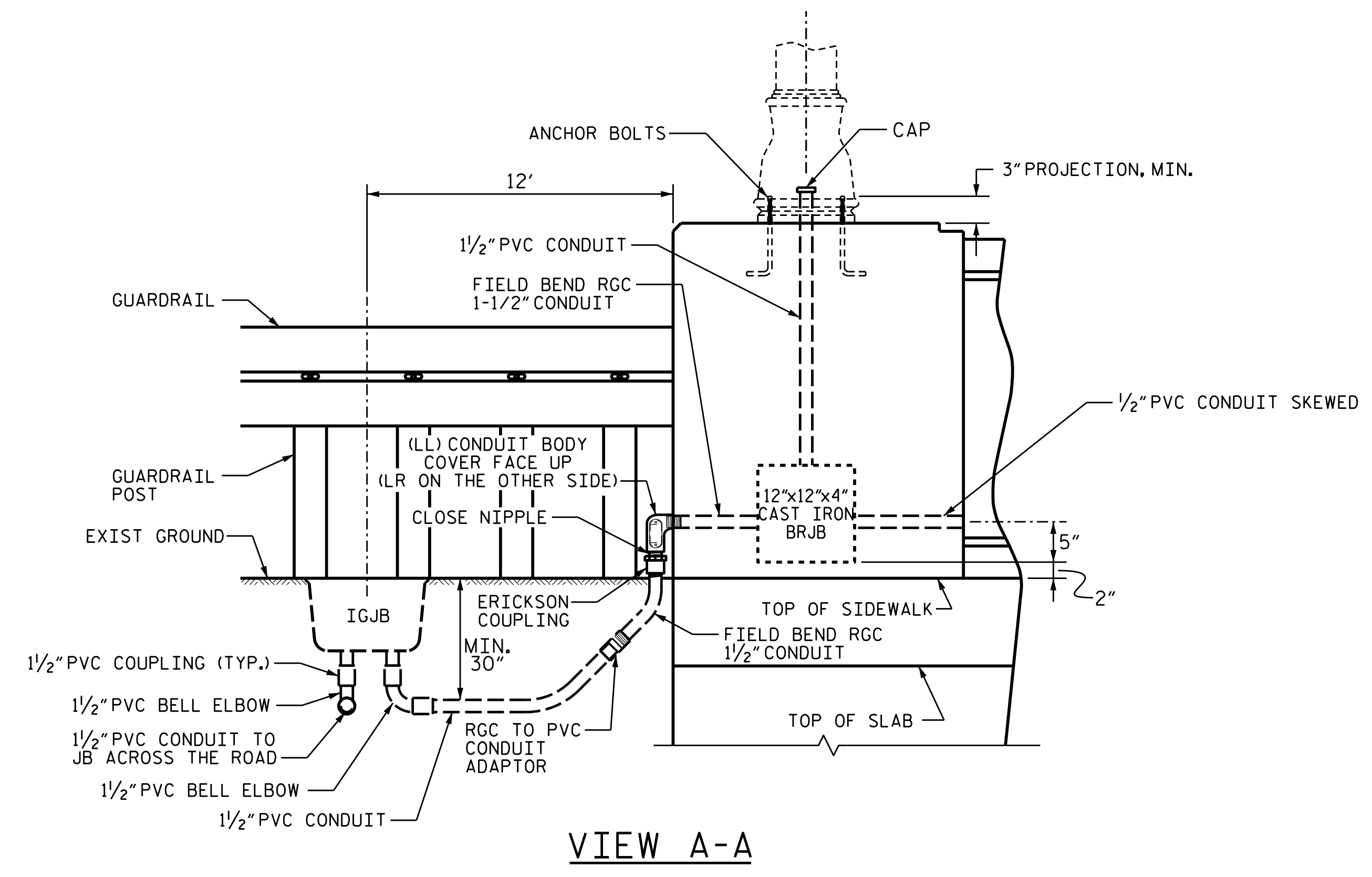
**DRMP**  
 DRMP NC, INC.  
 4235 SOUTH STREAM BLVD., SUITE 150  
 CHARLOTTE, NORTH CAROLINA 28217  
 (704) 332-2289  
 NC LICENSE NO. C-4923

DocuSigned by:  
 Christopher Kent Haire  
 SEAL  
 019740  
 ENGINEER  
 CHRISTOPHER KENT HAIRE

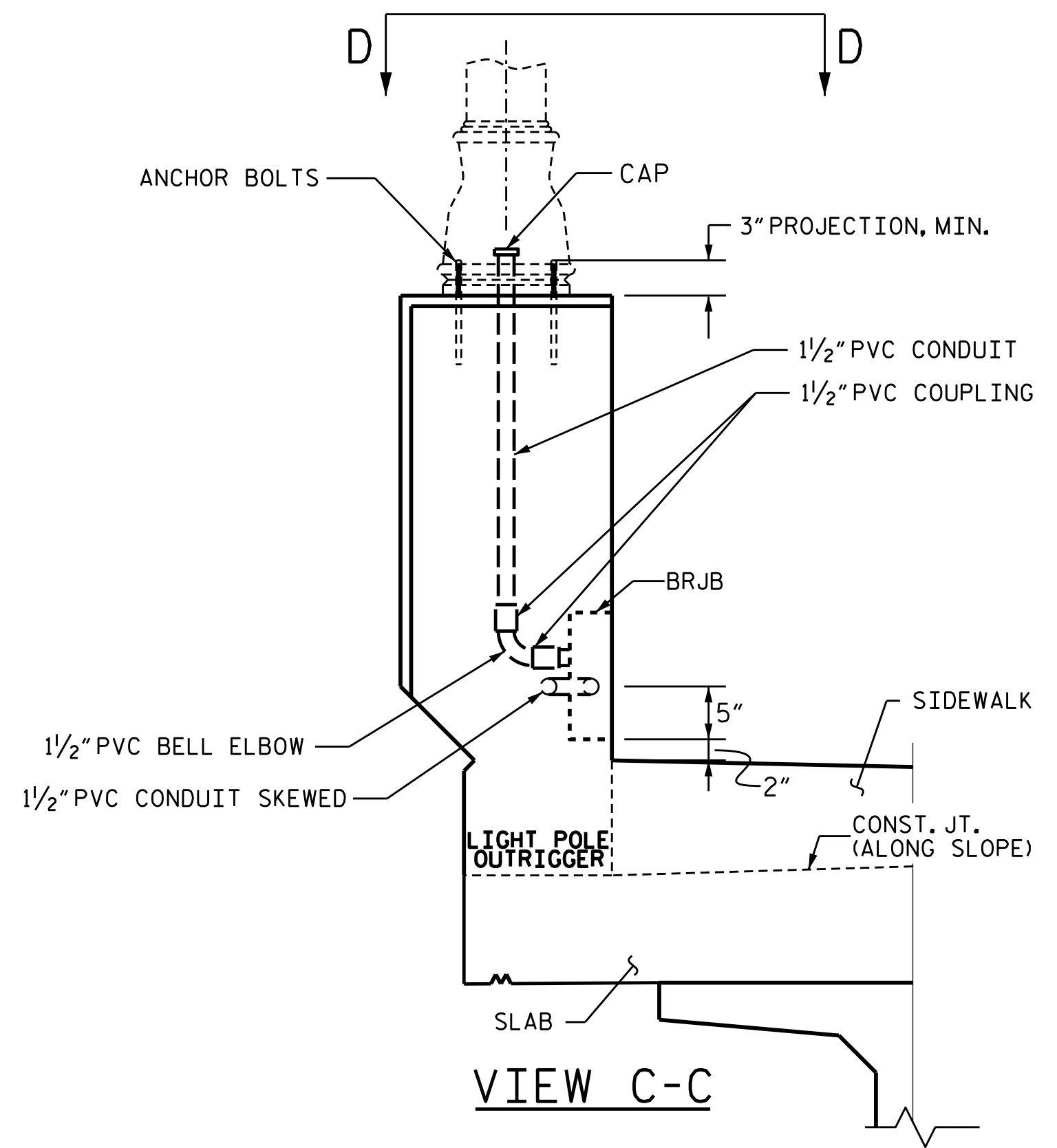
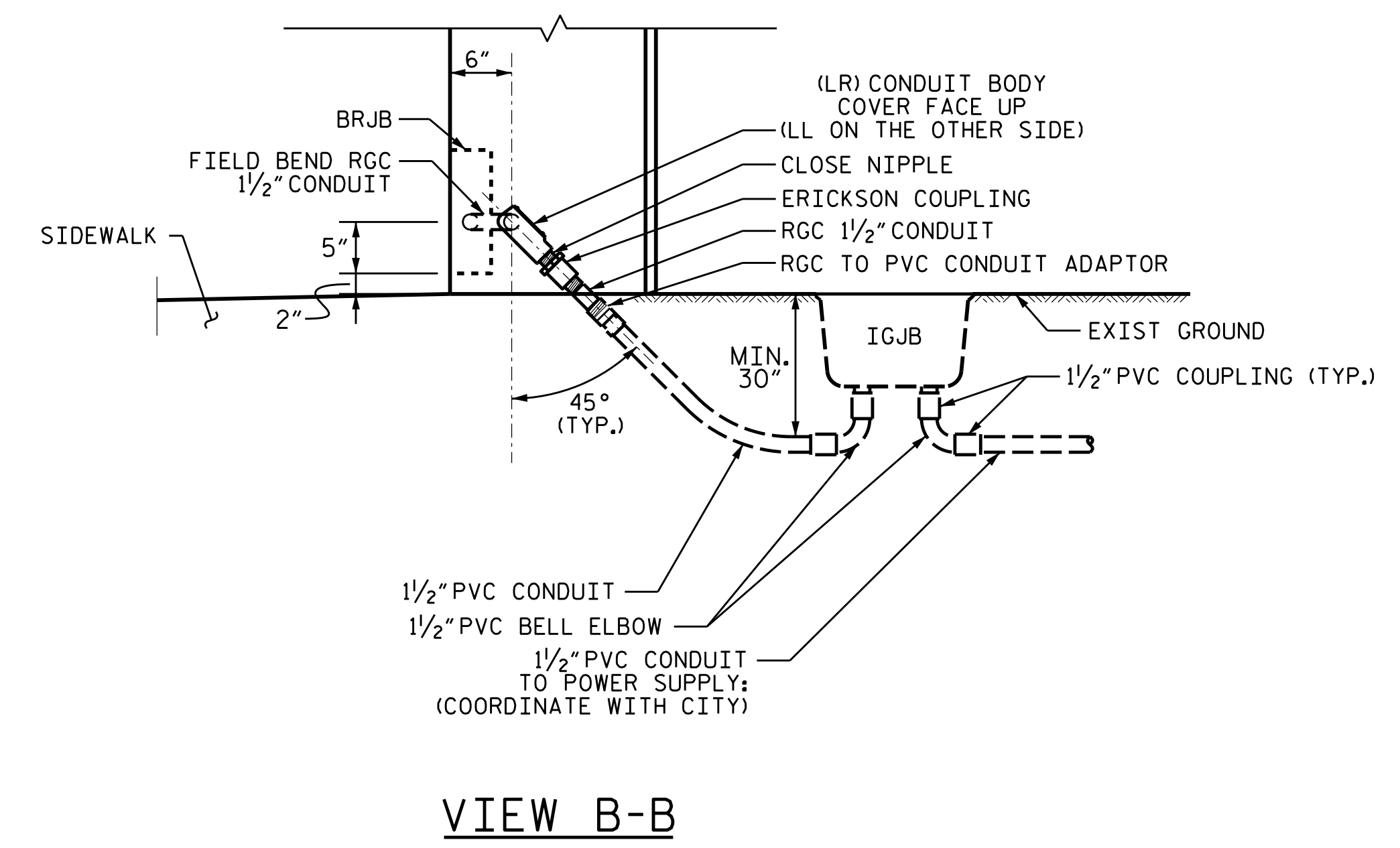
DRAWN BY : ADAM DAVIS DATE : 12/2022  
 CHECKED BY : CHRIS HAIRE DATE : 12/2022  
 DESIGN ENGINEER OF RECORD: CHRIS HAIRE DATE : 12/2022

2/8/2023 R:\B5985A\Lighting\Electrical\Lighting Design Files\B5985A.L1G.Bridge\_No.125.dgn  
 A.Davis

DOCUMENT NOT CONSIDERED FINAL  
 UNLESS ALL SIGNATURES COMPLETED



NOTE: ANCHOR BOLTS SHALL BE 3/4" HOT DIPPED GALVANIZED STEEL WITH A HOOKED END AND MINIMUM 6" THREADING. ANCHOR BOLT LENGTH SHALL BE 19", MINIMUM, AND SHALL BE INSTALLED WITH A MINIMUM 3" PROJECTION. PROVIDE LEVELING NUT AND WASHER, AND MOUNTING NUT AND WASHER WITH EACH ANCHOR BOLT.



PROJECT NO. B-5985A  
ROBESON COUNTY  
 STATION: 23+56.00 -L1-

SHEET 2 OF 2

STATE OF NORTH CAROLINA  
 DEPARTMENT OF TRANSPORTATION  
 RALEIGH  
 BRIDGE #125 OVER LUMBER RIVER ON  
 NC 72 E. (W. 2ND. STREET) BETWEEN  
 MARTIN LUTHER KING, JR. DRIVE  
 AND N. WATER STREET

REVISIONS						TOTAL SHEETS
NO.	BY:	DATE:	NO.	BY:	DATE:	

**DRMP**  
 DRMP NC, INC.  
 4235 SOUTH STREAM BLVD., SUITE 150  
 CHARLOTTE, NORTH CAROLINA 28217  
 (704) 332-2289  
 NC LICENSE NO. C-4923

DocuSigned by:  
 Christopher Kent  
 SEAL  
 019740  
 ENGINEER  
 CHRISTOPHER KENT  
 2/8/2023

DOCUMENT NOT CONSIDERED FINAL  
 UNLESS ALL SIGNATURES COMPLETED

2/8/2023 R:\B5985A\Lighting\Electrical\Lighting Design Files\B5985A.LTG\Bridge\_No.125.dgn  
 A.Davis

DRAWN BY : ADAM DAVIS DATE : 12/2022  
 CHECKED BY : CHRIS HAIRE DATE : 12/2022  
 DESIGN ENGINEER OF RECORD: CHRIS HAIRE DATE : 12/2022