

T.I.P.: B-5985A

CONTRACT: C204764

**STATE OF NORTH CAROLINA
DEPARTMENT OF TRANSPORTATION**

**PAVEMENT MARKING PLAN
ROBESON COUNTY**

<small>TIP NO.</small> B-5985A	<small>SHEET NO.</small> PMP - 1
<small>APPROVED:</small> <small>35E78B34F9743F</small>	
<small>DATE:</small> 2/2/2023	
<small>SEAL</small> 	
<small>DOCUMENT NOT CONSIDERED FINAL UNLESS ALL SIGNATURES COMPLETED</small>	



INDEX

<u>SHEET NO.</u>	<u>DESCRIPTION</u>
PMP-1	PAVEMENT MARKING PLAN TITLE SHEET
PMP-2	PAVEMENT MARKING SCHEDULE & CURB RAMP LOCATIONS/TYPES
PMP-3	PAVEMENT MARKING DETAIL

ROADWAY STANDARD DRAWING

THE FOLLOWING ROADWAY STANDARDS AS APPEAR IN "ROADWAY STANDARD DRAWINGS" - PROJECT SERVICES UNIT - N.C. DEPARTMENT OF TRANSPORTATION - RALEIGH, N.C., DATED JANUARY 2018 ARE APPLICABLE TO THIS PROJECT AND BY REFERENCE HEREBY ARE CONSIDERED A PART OF THESE PLANS:

<u>STD. NO.</u>	<u>TITLE</u>
1205.01	PAVEMENT MARKINGS - LINE TYPES AND OFFSETS
1205.02	PAVEMENT MARKINGS - TWO-LANE AND MULTILANE ROADWAYS
1205.04	PAVEMENT MARKINGS - INTERSECTIONS
1205.05	PAVEMENT MARKINGS - TURN LANES
1205.06	PAVEMENT MARKINGS - LANE DROPS
1205.07	PAVEMENT MARKINGS - PEDESTRIAN CROSSWALKS
1205.08	PAVEMENT MARKINGS - SYMBOLS AND WORD MESSAGES
1250.01	RAISED PAVEMENT MARKERS - INSTALLATION SPACING
1251.01	RAISED PAVEMENT MARKERS - PERMANENT AND TEMPORARY
1261.01	GUARDRAIL AND BARRIER DELINEATORS - INSTALLATION SPACING
1261.02	GUARDRAIL AND BARRIER DELINEATORS - TYPES AND MOUNTING
1262.01	GUARDRAIL END DELINEATION

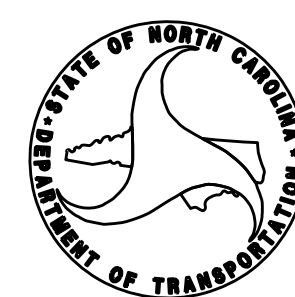
GENERAL NOTES

- THE FOLLOWING GENERAL NOTES APPLY AT ALL TIMES FOR THE DURATION OF THE CONSTRUCTION PROJECT, EXCEPT WHEN OTHERWISE NOTED IN THE PLAN, OR DIRECTED BY THE ENGINEER.
- A) INSTALL PAVEMENT MARKINGS AND PAVEMENT MARKERS ON THE FINAL SURFACE AS FOLLOWS:

Roadway Surfaces	Thermoplastic	Permanent Raised
Bridge Surfaces	Cold Applied Plastic	NONE
 - B) TIE PROPOSED PAVEMENT MARKING LINES TO EXISTING PAVEMENT MARKING LINES.
 - C) REMOVE/REPLACE ANY CONFLICTING/DAMAGED PAVEMENT MARKINGS AND MARKERS.
 - D) PASSING ZONES WILL BE DETERMINED IN THE FIELD AND MUST BE APPROVED BY THE ENGINEER.
 - E) STOP BAR LOCATION AT NON-SIGNALIZED INTERSECTIONS MAY BE ADJUSTED AS DIRECTED BY THE ENGINEER.
 - F) REMOVE ALL RESIDUE AND SURFACE LAITANCE BY ACCEPTABLE METHODS ON CONCRETE BRIDGE DECKS PRIOR TO PLACING PAVEMENT MARKING MATERIAL.
 - G) UNLESS OTHERWISE SPECIFIED, HEATED-IN-PLACE THERMOPLASTIC MAY BE USED IN LIEU OF EXTRUDED THERMOPLASTIC FOR STOP BARS, SYMBOLS, CHARACTERS AND DIAGONALS. IF HEATED-IN-PLACE IS USED, IT SHALL BE PAID FOR USING THE EXTRUDED THERMOPLASTIC PAY ITEM.
 - H) UNLESS OTHERWISE SPECIFIED, HEATED-IN-PLACE THERMOPLASTIC MAY BE USED IN LIEU OF COLD APPLIED PLASTIC FOR STOP BARS, SYMBOLS, CHARACTERS AND DIAGONALS ON ASPHALT OR CONCRETE ROADWAYS. IF HEATED-IN-PLACE IS USED, IT SHALL BE PAID FOR USING THE COLD APPLIED PAY ITEM.
 - I) TYPE III COLD APPLIED PLASTIC MAY BE USED IN LIEU OF TYPE II COLD APPLIED PLASTIC. IF TYPE III COLD APPLIED PLASTIC IS USED, IT SHALL BE PAID FOR USING THE TYPE II COLD APPLIED PLASTIC PAY ITEM.
 - J) SEE ROADWAY PLANS FOR ALTERNATE CURB RAMP DESIGNS WHEN INDICATED ON PAVEMENT MARKING DETAIL SHEETS.

PLAN SUBMITTED TO:

Ayman I. Alqudwah, P.E. Signing & Delineation Regional Engineer
Mitch Eaton, P.E. Signing & Delineation Project Design Engineer



Stantec Consulting Services Inc.
 801 Jones Franklin Road
 Suite 300
 Raleigh, NC 27606
 Tel. (919) 851-6866
 Fax. (919) 851-7024
 www.stantec.com
 License No. F-0672

PLAN PREPARED BY: Stantec Consulting Services, Inc.

Betsy Watson, PE Senior Principal
Regina Muncey, PE Transportation Engineer
James Hambright Senior Transportation Technician



Pavement Marking Schedule

COLD APPLIED PLASTIC (4")

- C2 - (4") WHITE SOLID LANE LINE (TYPE II)
- C4 - (4") 3 FT. - 9 FT./SP WHITE MINISKIP (TYPE II)
- C13 - (4") YELLOW DOUBLE CENTER (TYPE II)

COLD APPLIED PLASTIC PAVEMENT MARKING SYMBOL

- C70 - LEFT TURN ARROW (TYPE II)
- C74 - COMBO.STRAIGHT/RIGHT (TYPE II)

THERMOPLASTIC (4", 90 MILS)

- T1 - (4") WHITE EDGELINE
- T2 - WHITE SOLID LANE LINE
- T3 - (4") 10 FT. WHITE SKIP
- T4 - (4") 3 FT. - 9 FT./SP WHITE MINISKIP
- T13 - (4") YELLOW DOUBLE CENTER

THERMOPLASTIC (8", 90 MILS)

- T43 - (8") WHITE SOLID LANE LINE
- T44 - (8") 3 FT. - 9 FT./SP WHITE MINISKIP
- T46 - (8") WHITE CROSSWALK LINE

THERMOPLASTIC GENERIC PAVEMENT MARKING ITEM (1205)

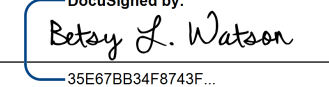


- T61 - WHITE STOPBAR (24", 90 MIL)
- T62 - WHITE CROSSWALK LINE (24", 90 MIL)

THERMOPLASTIC PAVEMENT MARKING SYMBOLS (90 MILS)

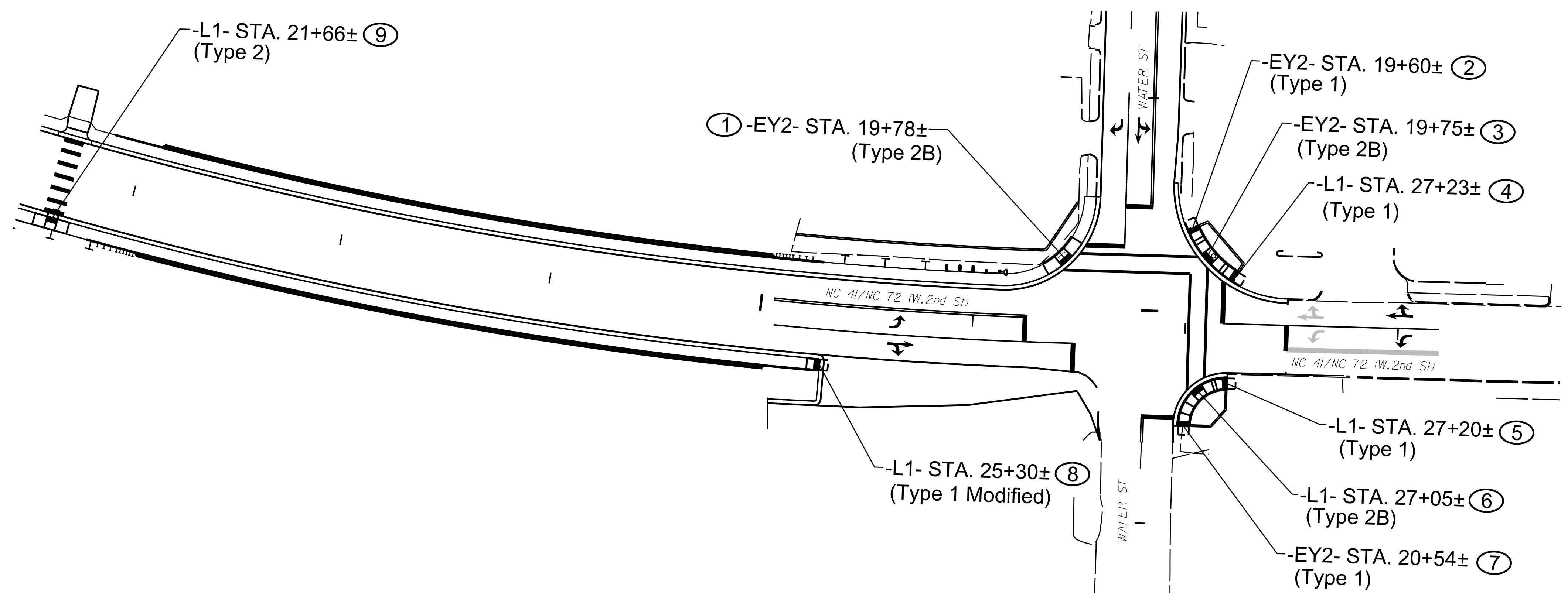
- T70 - LEFT TURN ARROW
- T71 - RIGHT TURN ARROW
- T73 - COMBO STRAIGHT/LEFT
- T74 - COMBO.STRAIGHT/RIGHT
- T103 - 24" YIELD LINE TRIANGLE

THERMOPLASTIC PAVEMENT MARKING CHARACTER (90 MILS)

- T100 - ALPHANUMERIC CHAR. (90 MIL)


TIP NO. B-5985A	SHEET NO. PMP-2
APPROVED:  DATE: 2/2/2023	
SEAL 	
DOCUMENT NOT CONSIDERED FINAL UNLESS ALL SIGNATURES COMPLETED	
	

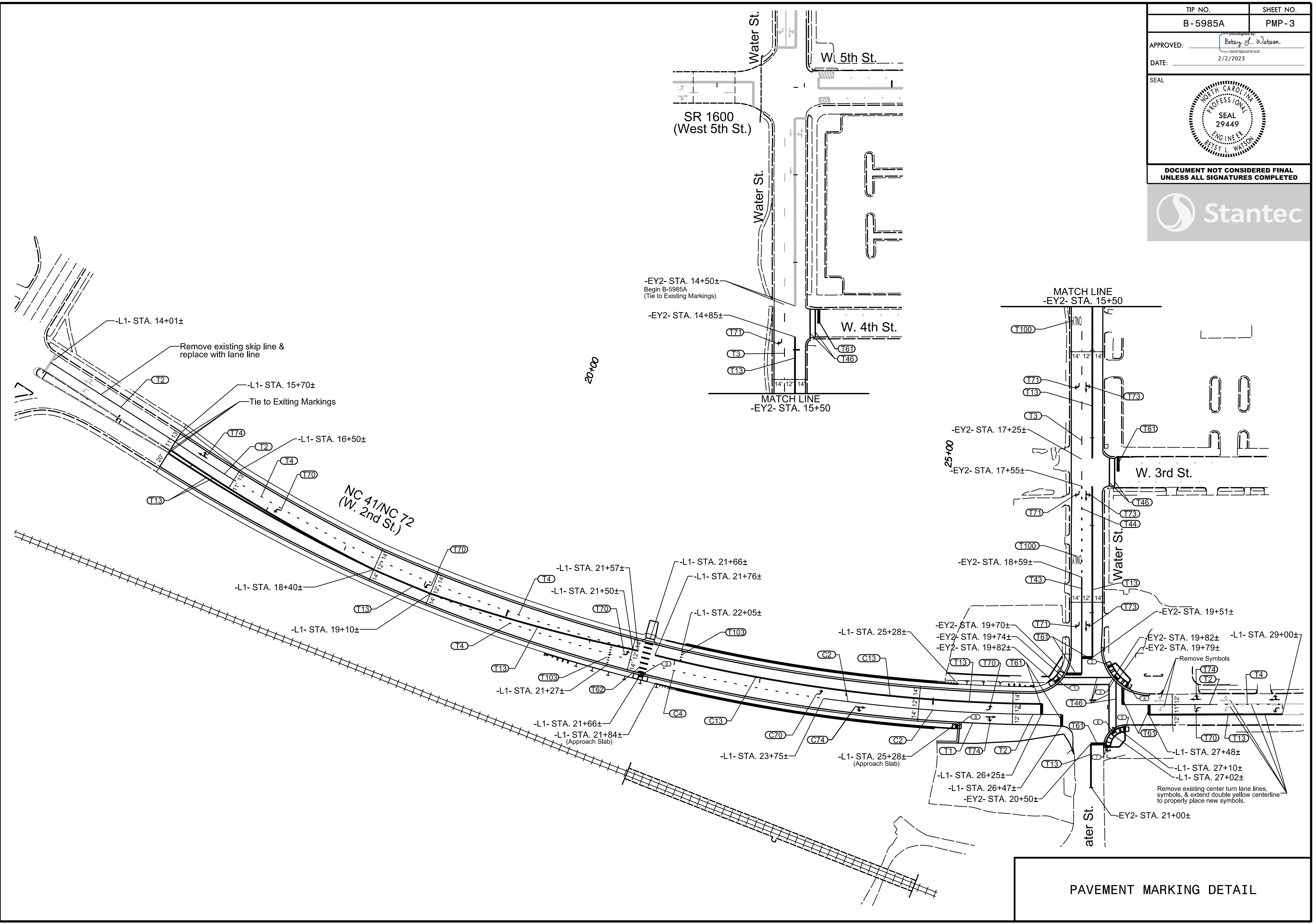
CURB RAMPS - 2nd St @ Water St



**CURB RAMP LOCATIONS & TYPES
and
PAVEMENT MARKING SCHEDULE**

I:\26\2023\Traffic\Signing\CADD\Plan Sheets\B-5985A\B-5985A Title Sheet.dgn
1/26/2023
J:\Traffic\Signing\CADD\Plan Sheets\B-5985A\B-5985A Title Sheet.dgn
1/26/2023
J:\Traffic\Signing\CADD\Plan Sheets\B-5985A\B-5985A Title Sheet.dgn

TIP NO.	SHEET NO.
B-5985A	PMP-3
APPROVED:	<i>Betsy L. Watson</i>
DATE:	2/2/2023
SEAL	
DOCUMENT NOT CONSIDERED FINAL UNLESS ALL SIGNATURES COMPLETED	



I:\26\2023\12\Traffic\Signing\CADD\Plan_Sheets\B-5985A\B-5985A_PMP_PW-03.dgn
inambright

PAVEMENT MARKING DETAIL