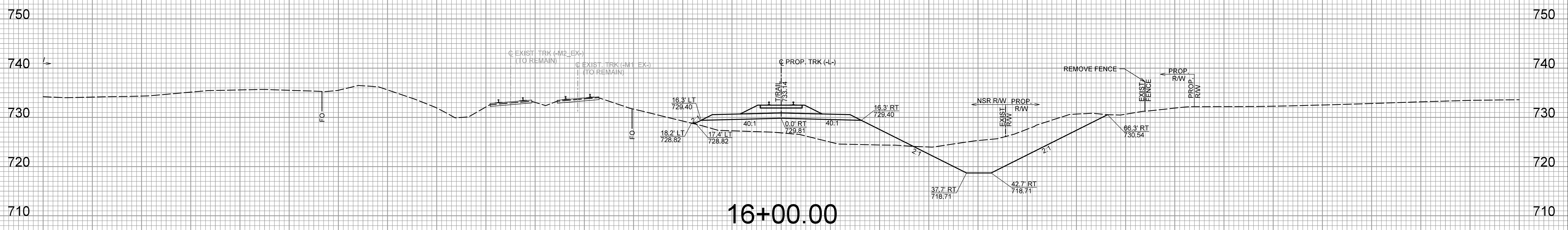
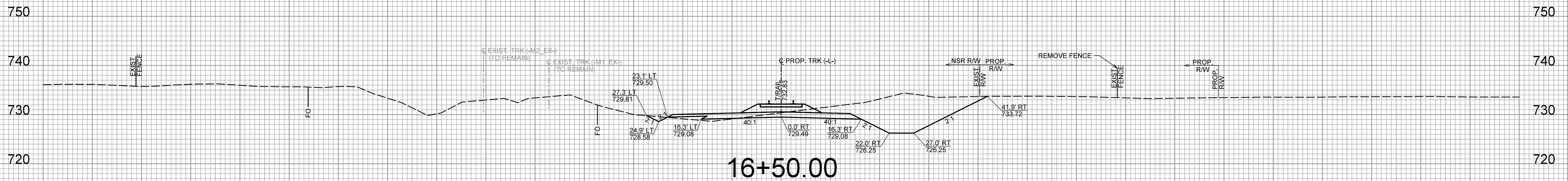
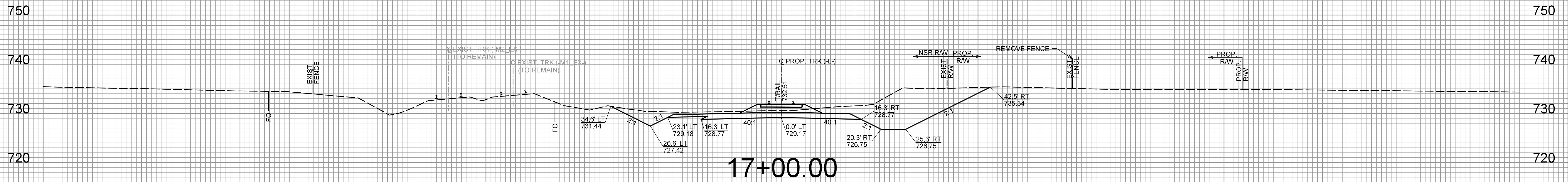
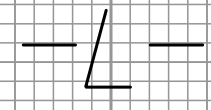


150 140 130 120 110 100 90 80 70 60 50 40 30 20 10 0 10 20 30 40 50 60 70 80 90 100 110 120 130 140 150

NOTE:  
THE TYPICAL SECTIONS TAKE PRECEDENCE OVER THE CROSS SECTIONS. CROSS SECTIONS ARE INCLUDED FOR REFERENCE ONLY



150 140 130 120 110 100 90 80 70 60 50 40 30 20 10 0 10 20 30 40 50 60 70 80 90 100 110 120 130 140 150