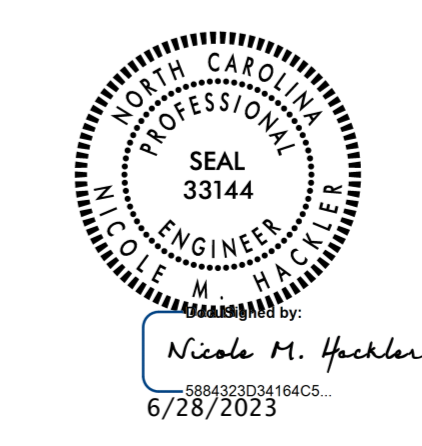
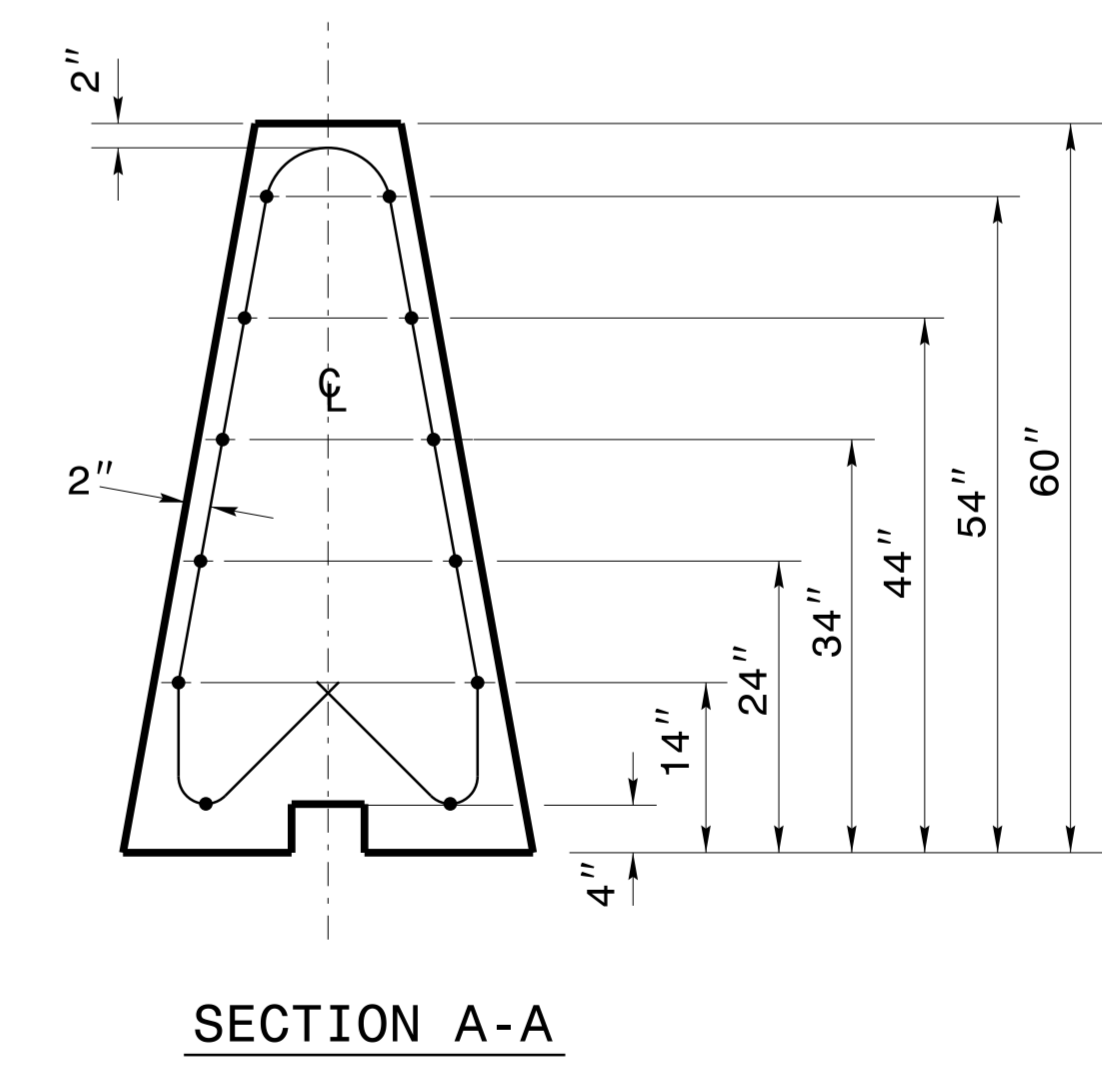
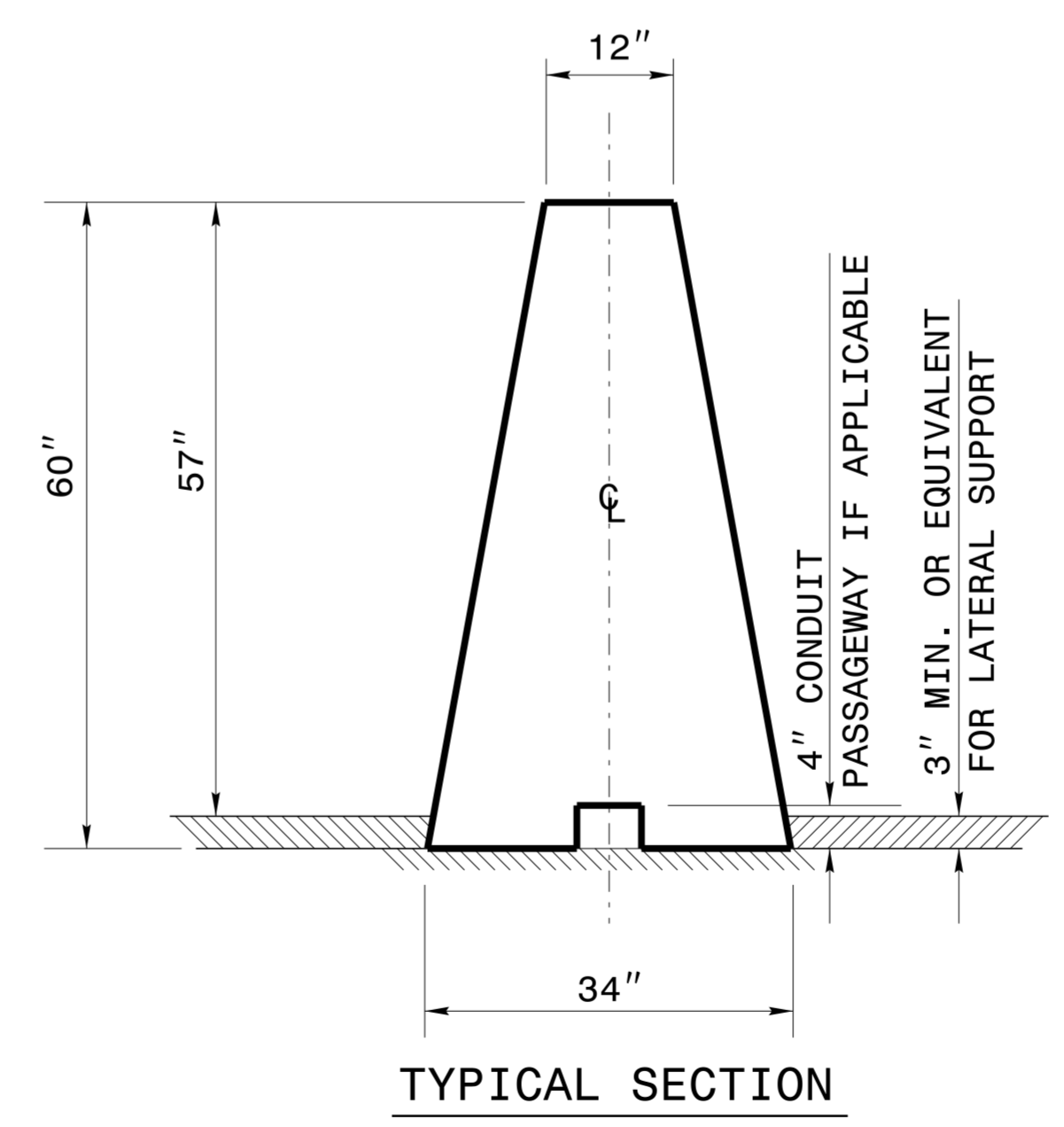
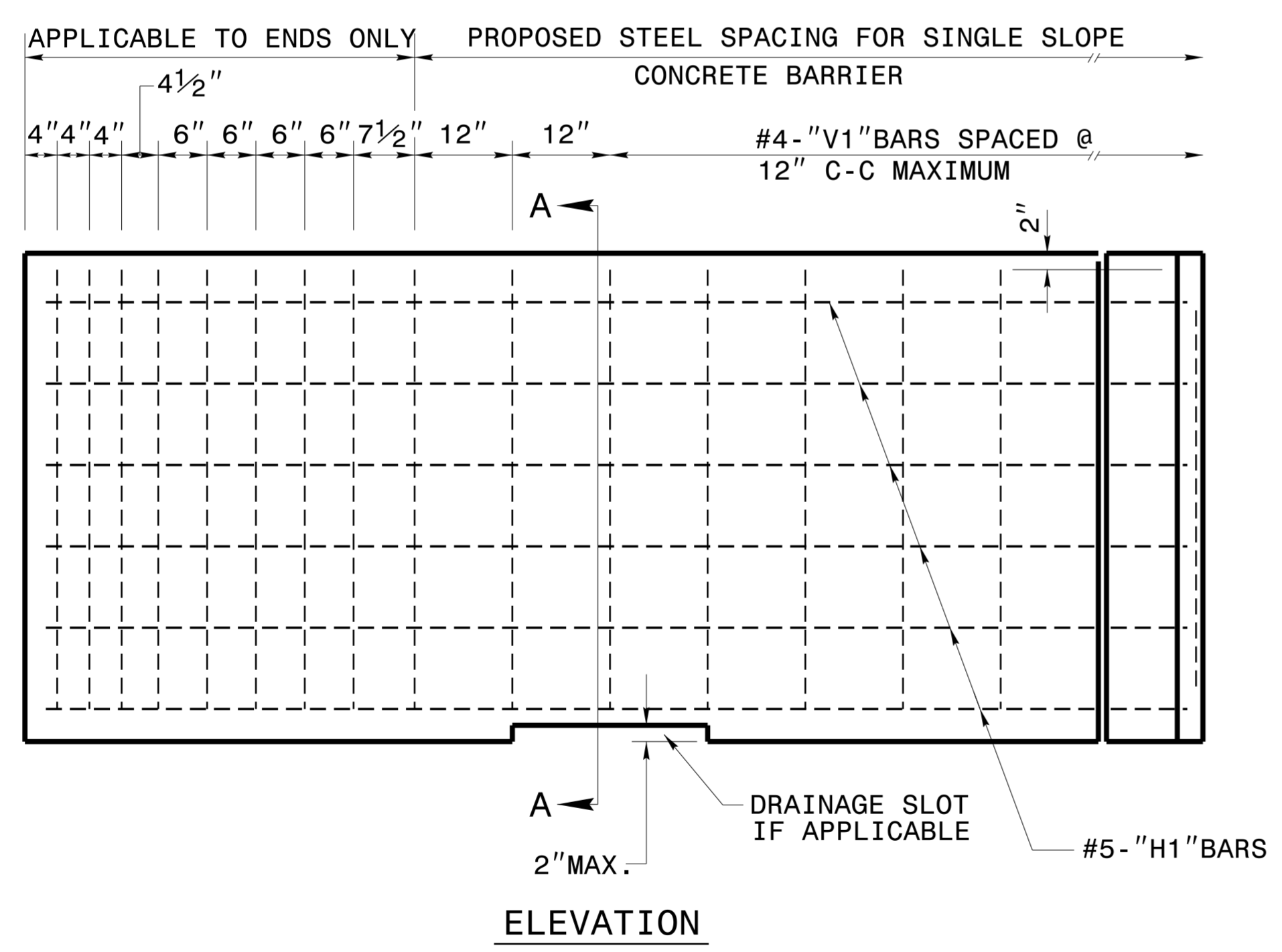


GENERAL NOTES:

- USE CLASS "AA" CONCRETE.
- CHAMFER TOP AND ENDS OF BARRIER 1/2 INCH.
- USE BAR SPLICE LENGTHS A MINIMUM OF 20 TIMES THE NORMAL DIAMETER OF THE BAR. ANY METHOD DEvised BY THE CONTRACTOR AND APPROVED BY THE ENGINEER THAT WILL ASSURE THE LONGITUDINAL ROADWAY STEEL WILL BE POSITIONED +/- 1/2 INCH AS DIMENSIONED WILL BE SATISFACTORY.  
  
WELDED WIRE FABRIC MAY BE USED AS AN OPTION TO CONVENTIONAL REINFORCEMENT FOR CAST-IN-PLACE BARRIER. WELDED WIRE FABRIC SHALL BE MADE IN ACCORDANCE WITH ASTM A497. CONDUIT TO BE PROVIDED ONLY WHEN CALLED FOR ELSEWHERE IN THE PLANS. POSITION OF THE CONDUIT CONDUIT PASSAGEWAY MAY BE ADJUSTED TO FACILITATE CONSTRUCTION, SUBJECT TO APPROVAL BY THE ENGINEER.
- REFER TO ROADWAY STANDARD DRAWING NO.854.01 FOR EXPANSION AND CONTRACTION JOINT, FILLER AND OTHER SPECIFICATIONS.



CONTRACT STANDARDS & DEVELOPMENT UNIT  
STANDARDS AND SPECIAL DESIGN  
Office 919-250-4128 FAX 919-250-4119

**SINGLE SLOPE  
CONCRETE BARRIER**

ORIGINAL BY: \_\_\_\_\_ DATE: \_\_\_\_\_  
 MODIFIED BY: kakempf DATE: 03-03-10  
 CHECKED BY: \_\_\_\_\_ DATE: \_\_\_\_\_  
 FILE SPEC.: details/nbritt/english/guardrail/single slope concrete barrier.dgn