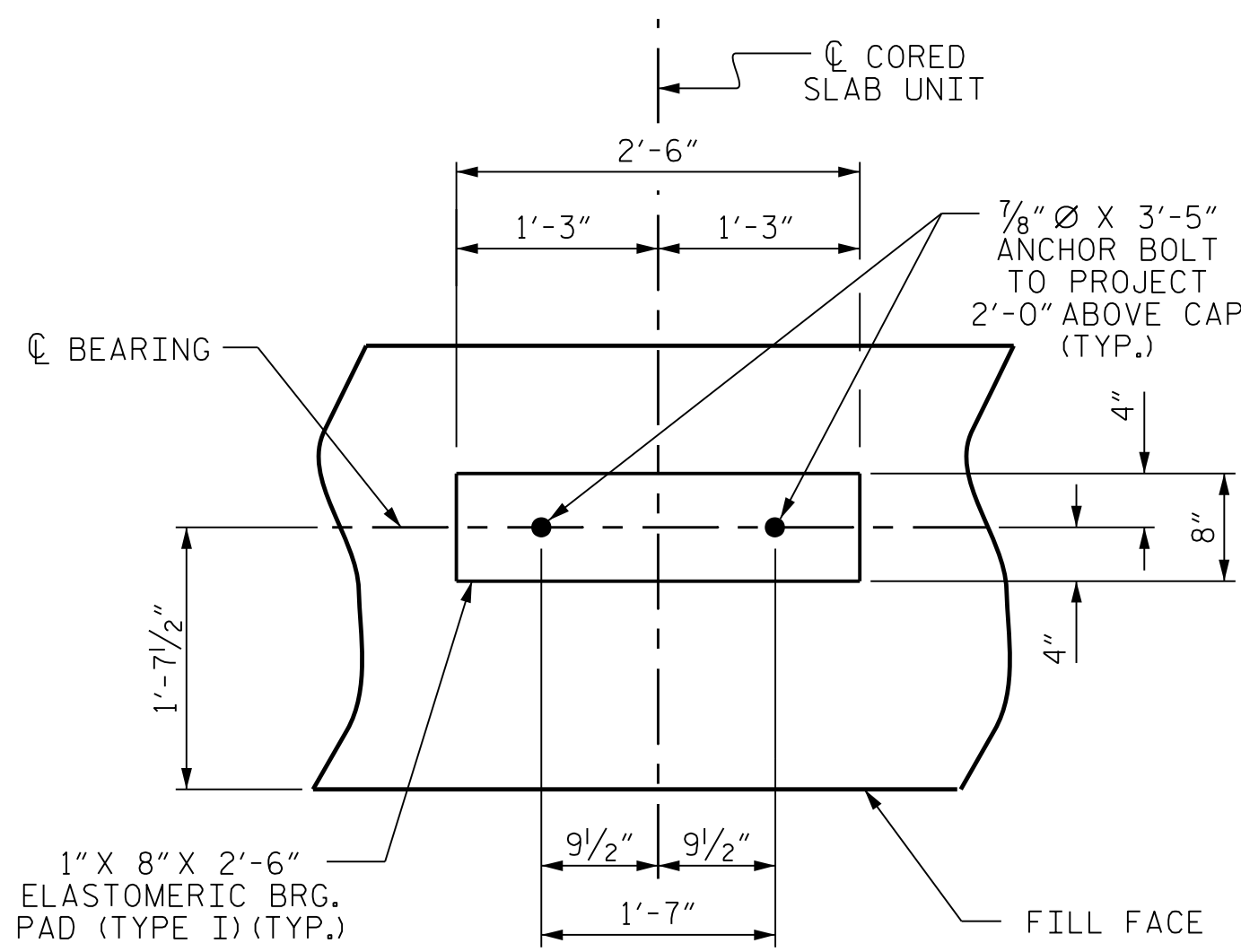


BAGGED STONE AND PIPE SHALL BE PLACED IMMEDIATELY AFTER COMPLETION OF END BENT EXCAVATION. PIPE MAY BE EITHER CONCRETE, CORRUGATED STEEL, CORRUGATED ALUMINUM ALLOY, OR CORRUGATED PLASTIC. PERFORATED PIPE WILL NOT BE ALLOWED.

BAGGED STONE SHALL REMAIN IN PLACE UNTIL THE ENGINEER DIRECTS THAT IT BE REMOVED. THE CONTRACTOR SHALL REMOVE AND DISPOSE OF SILT ACCUMULATIONS AT BAGGED STONE WHEN SO DIRECTED BY THE ENGINEER. BAGS SHALL BE REMOVED AND REPLACED WHENEVER THE ENGINEER DETERMINES THAT THEY HAVE DETERIORATED AND LOST THEIR EFFECTIVENESS.

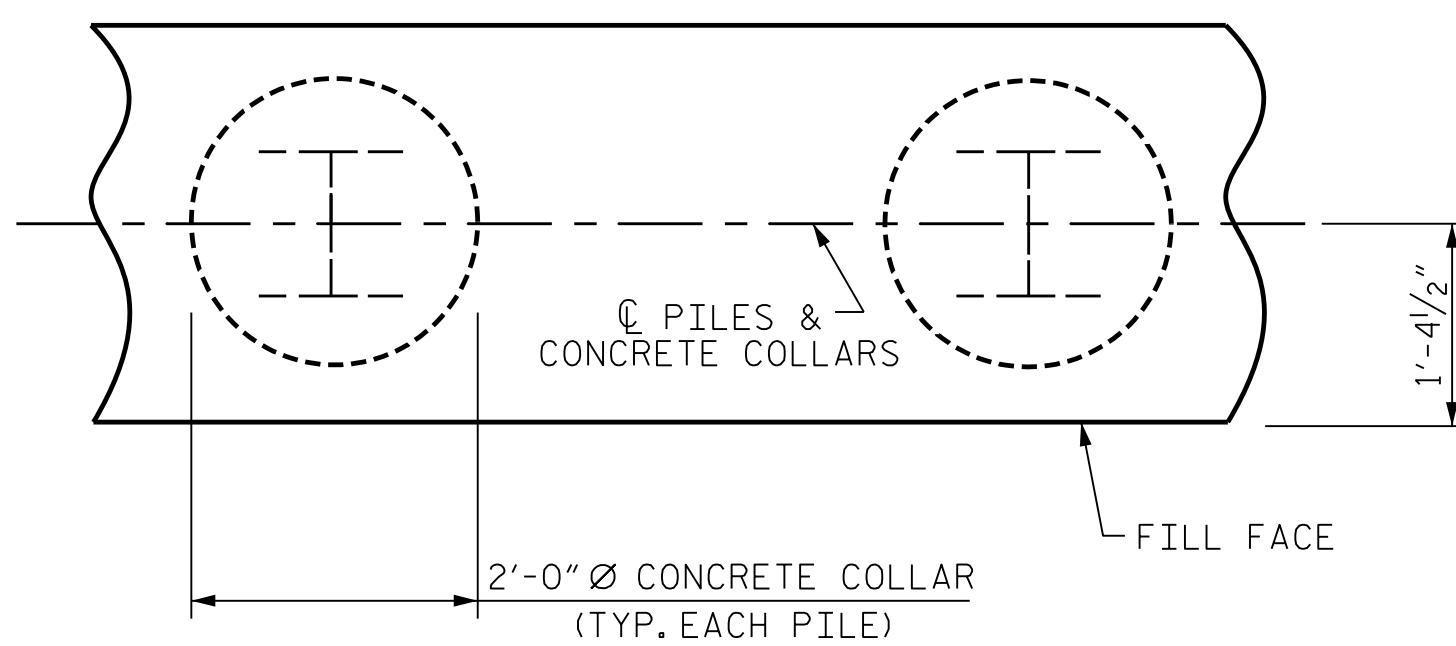
NO SEPARATE PAYMENT WILL BE MADE FOR THIS WORK AND THE ENTIRE COST OF THIS WORK SHALL BE INCLUDED IN THE UNIT CONTRACT PRICE BID FOR THE SEVERAL PAY ITEMS.

TEMPORARY DRAINAGE AT END BENT



DETAIL "A"

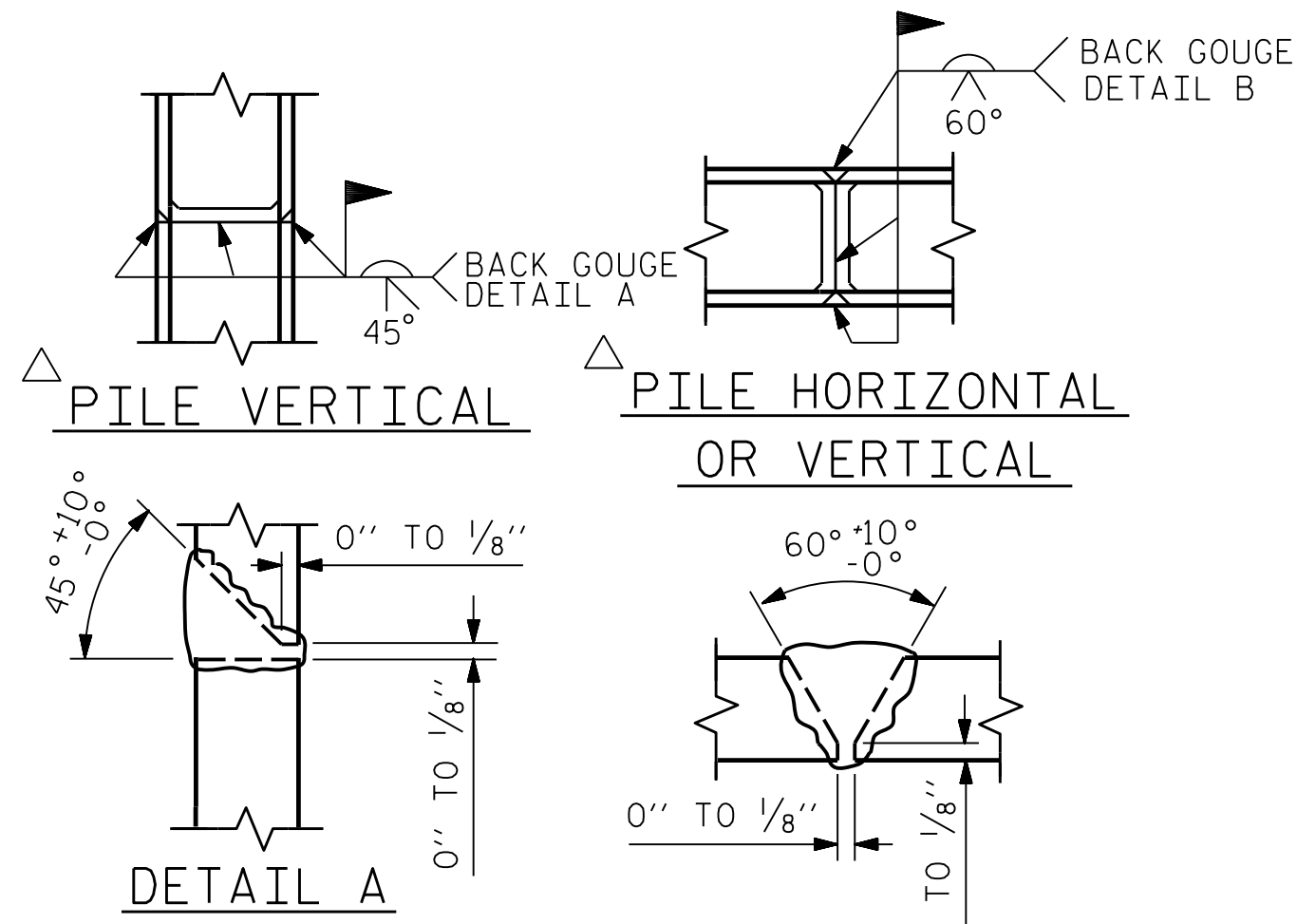
(END BENT 1 SHOWN, END BENT 2 SIMILAR BY ROTATION)



PLAN

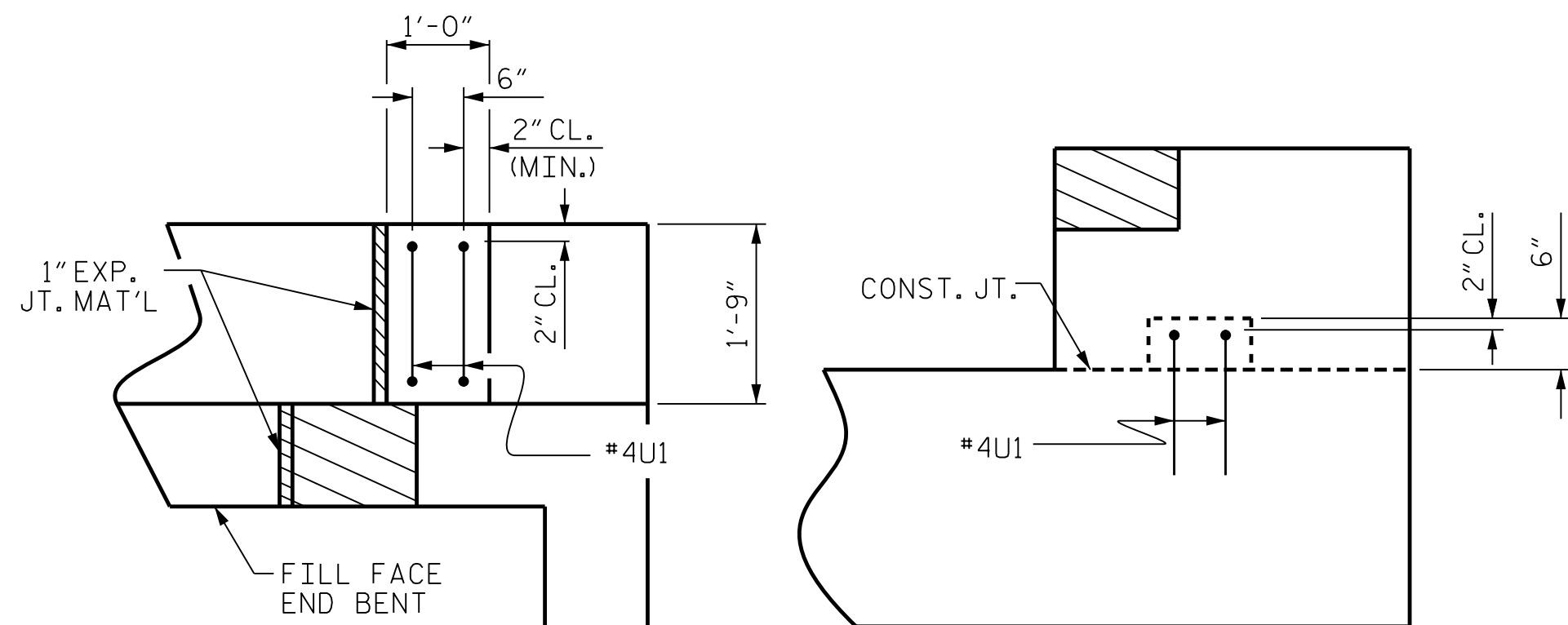
CORROSION PROTECTION FOR STEEL PILES DETAIL

(END BENT 1 SHOWN, END BENT 2 SIMILAR BY ROTATION)



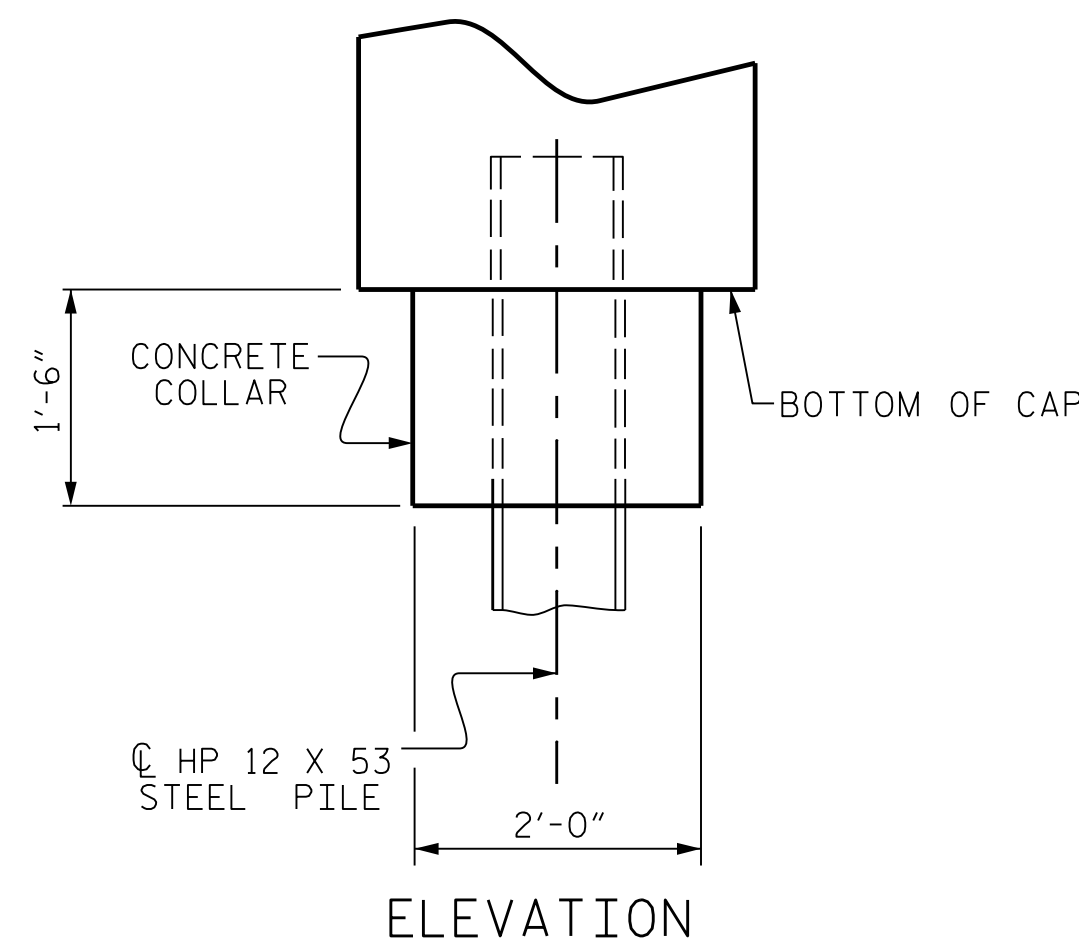
POSITION OF PILE DURING WELDING.

PILE SPLICE DETAILS

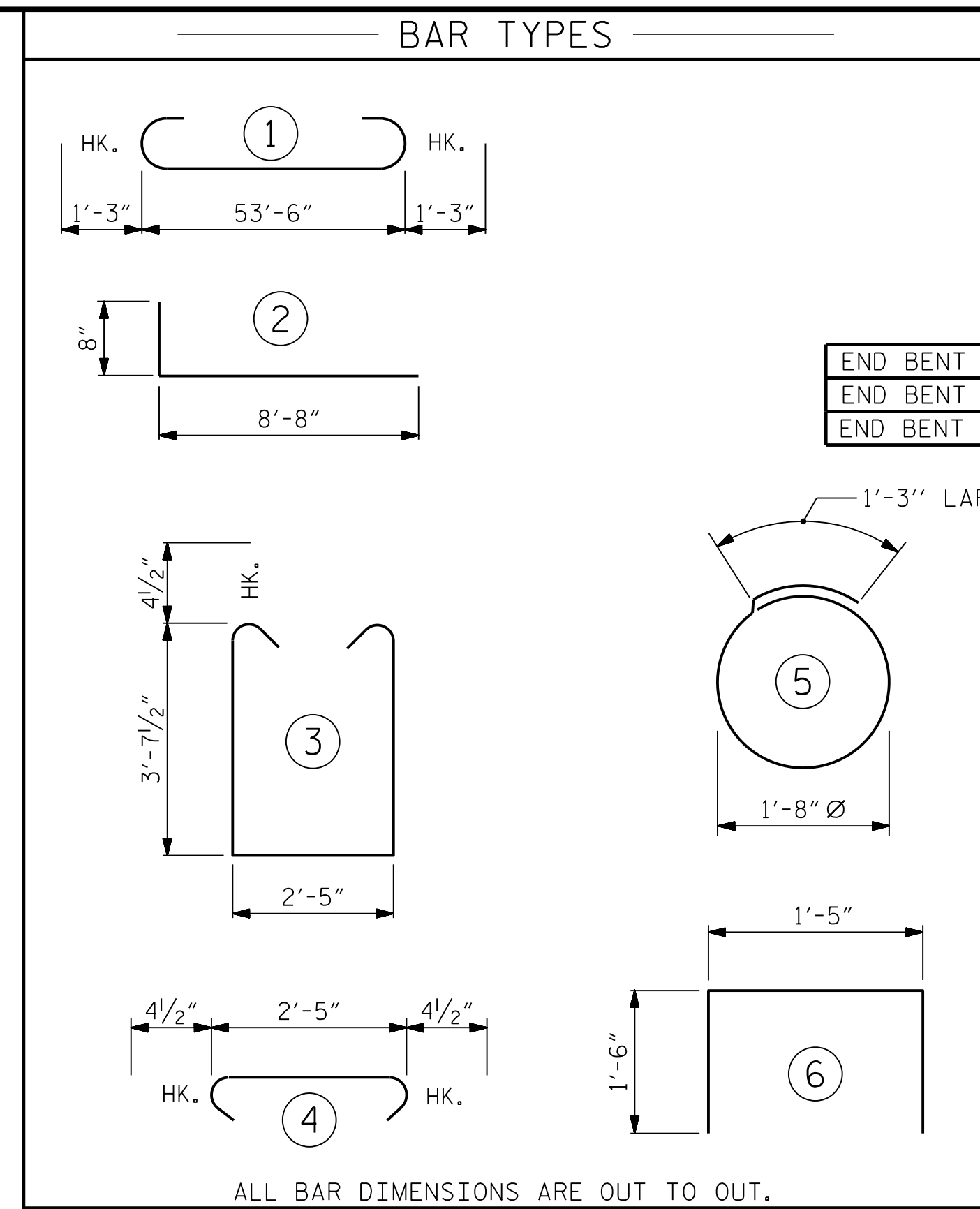


LATERAL GUIDE DETAILS

(EACH END SIMILAR)



ELEVATION



ALL BAR DIMENSIONS ARE OUT TO OUT.

END BENT No. 1	END BENT No. 2
HP 12 X 53 STEEL PILES NO: 9 LIN. FT. = 225	HP 12 X 53 STEEL PILES NO: 9 LIN. FT. = 180
PILE DRIVING EQUIPMENT SETUP FOR HP 12 X 53 STEEL PILES NO: 9	PILE DRIVING EQUIPMENT SETUP FOR HP 12 X 53 STEEL PILES NO: 9
PILE EXCAVATION IN SOIL LIN. FT = 98	PILE EXCAVATION NOT IN SOIL LIN. FT = 10

BILL OF MATERIAL

FOR ONE END BENT

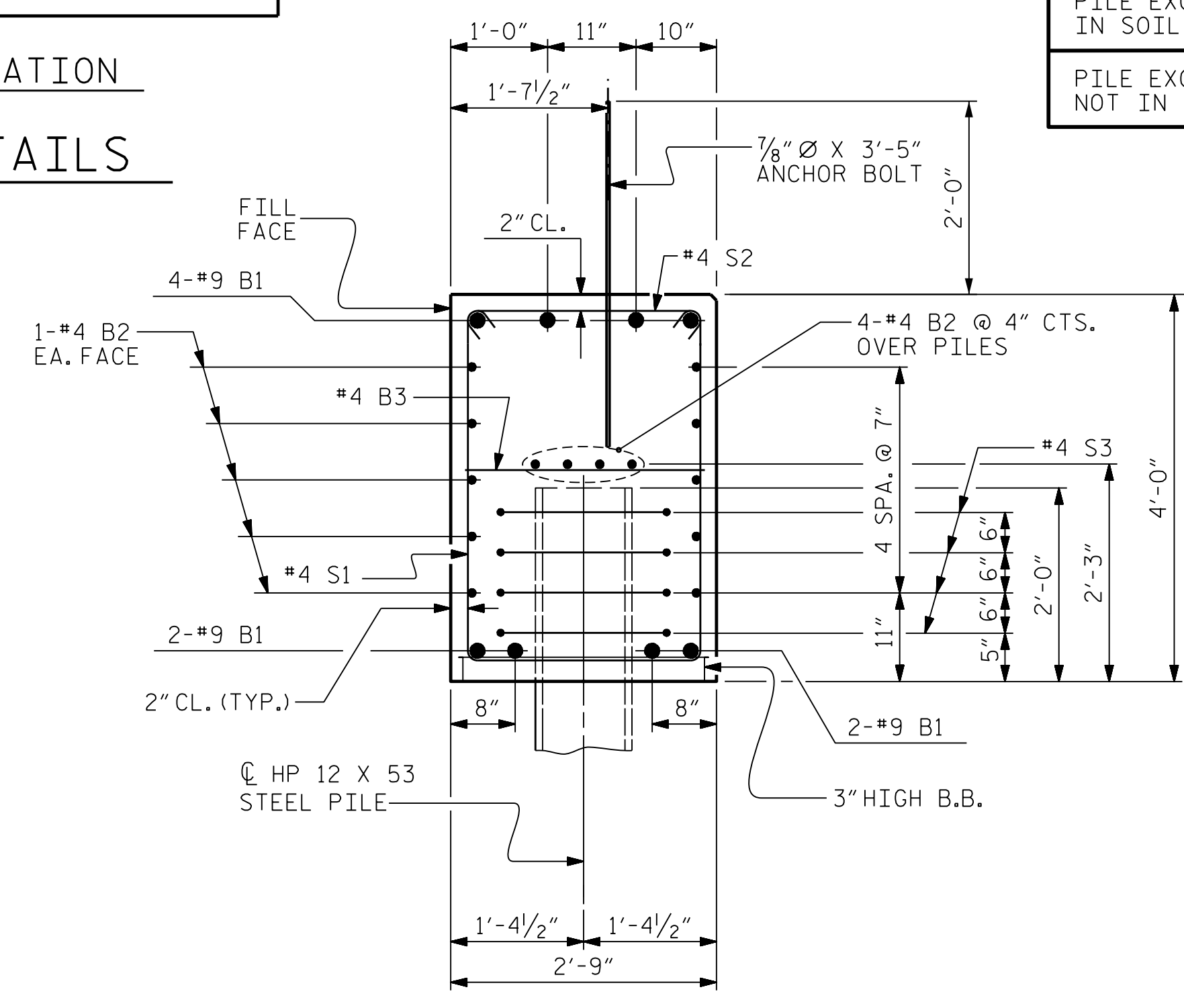
BAR	NO.	SIZE	TYPE	LENGTH	WEIGHT	
B1	8	#9	1	56'-0"	1524	
B2	28	#4	STR	28'-4"	530	
B3	14	#4	STR	2'-5"	23	
H1	40	#4	2	9'-4"	249	
END BENT 1	K1	8	#4	STR	3'-10"	21
END BENT 1	K2	8	#4	STR	4'-3"	23
END BENT 2	K1	16	#4	STR	3'-10"	41
S1	66	#4	3	10'-5"	460	
S2	66	#4	4	3'-2"	140	
S3	36	#4	5	6'-6"	157	
V1	56	#4	STR	6'-6"	244	
U1	4	#4	6	4'-5"	12	

QUANTITIES FOR END BENT 1

REINFORCING STEEL	3378 LBS.
CLASS A CONCRETE BREAKDOWN	
POUR #1 CAP, LOWER PART OF WINGS & COLLARS	26.1 C.Y.
POUR #2 UPPER PART OF WINGS	2.8 C.Y.
POUR #3 LATERAL GUIDES	0.1 C.Y.
TOTAL CLASS A CONCRETE	29.0 C.Y.

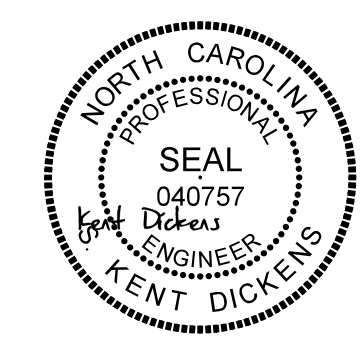
QUANTITIES FOR END BENT 2

REINFORCING STEEL	3376 LBS.
CLASS A CONCRETE BREAKDOWN	
POUR #1 CAP, LOWER PART OF WINGS & COLLARS	25.9 C.Y.
POUR #2 UPPER PART OF WINGS	2.7 C.Y.
POUR #3 LATERAL GUIDES	0.1 C.Y.
TOTAL CLASS A CONCRETE	28.7 C.Y.



SECTION A-A

(CONCRETE COLLAR NOT SHOWN FOR CLARITY. SEE "CORROSION PROTECTION FOR STEEL PILES DETAIL.")



PROJECT NO. 17BP.14.R.212

JACKSON COUNTY

STATION: 19+91.00 -L-

SHEET 4 OF 4

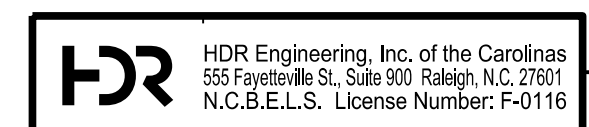
STATE OF NORTH CAROLINA
DEPARTMENT OF TRANSPORTATION
RALEIGH

SUBSTRUCTURE END BENT 1 AND 2 DETAILS

REVISIONS						SHEET NO.
NO.	BY:	DATE:	NO.	BY:	DATE:	5-18
1	--	--	3	--	--	TOTAL SHEETS 20
2	--	--	4	--	--	

PLOT DRIVER: NCDOT STRUCTURES DEFAULT PLOTTER.plt
 USER: DCARTER
 DATE: 3/31/2021
 TIME: 3:02:18 PM
 FILE: ...SUBSTRUCTURE END BENT DETAILS

DES BY: S. DHONDE	DATE: 12/19	DWG BY: B. PETERSON	DATE: 08/19
DES CHK: J. ROBERTS	DATE: 12/19	CHK BY: K. DICKENS	DATE: 02/20



1/25/2022
DOCUMENT NOT CONSIDERED FINAL
UNLESS ALL SIGNATURES COMPLETED