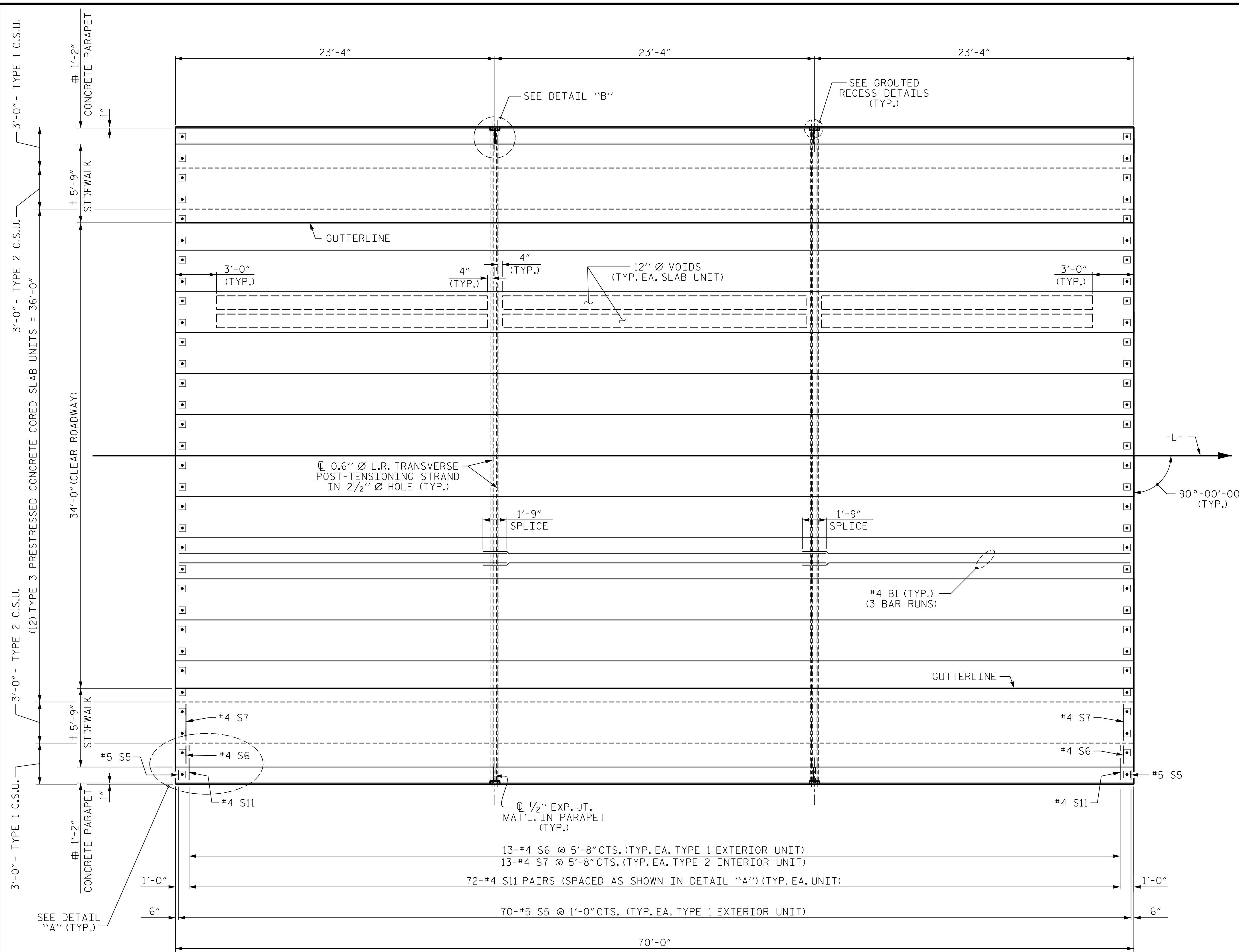
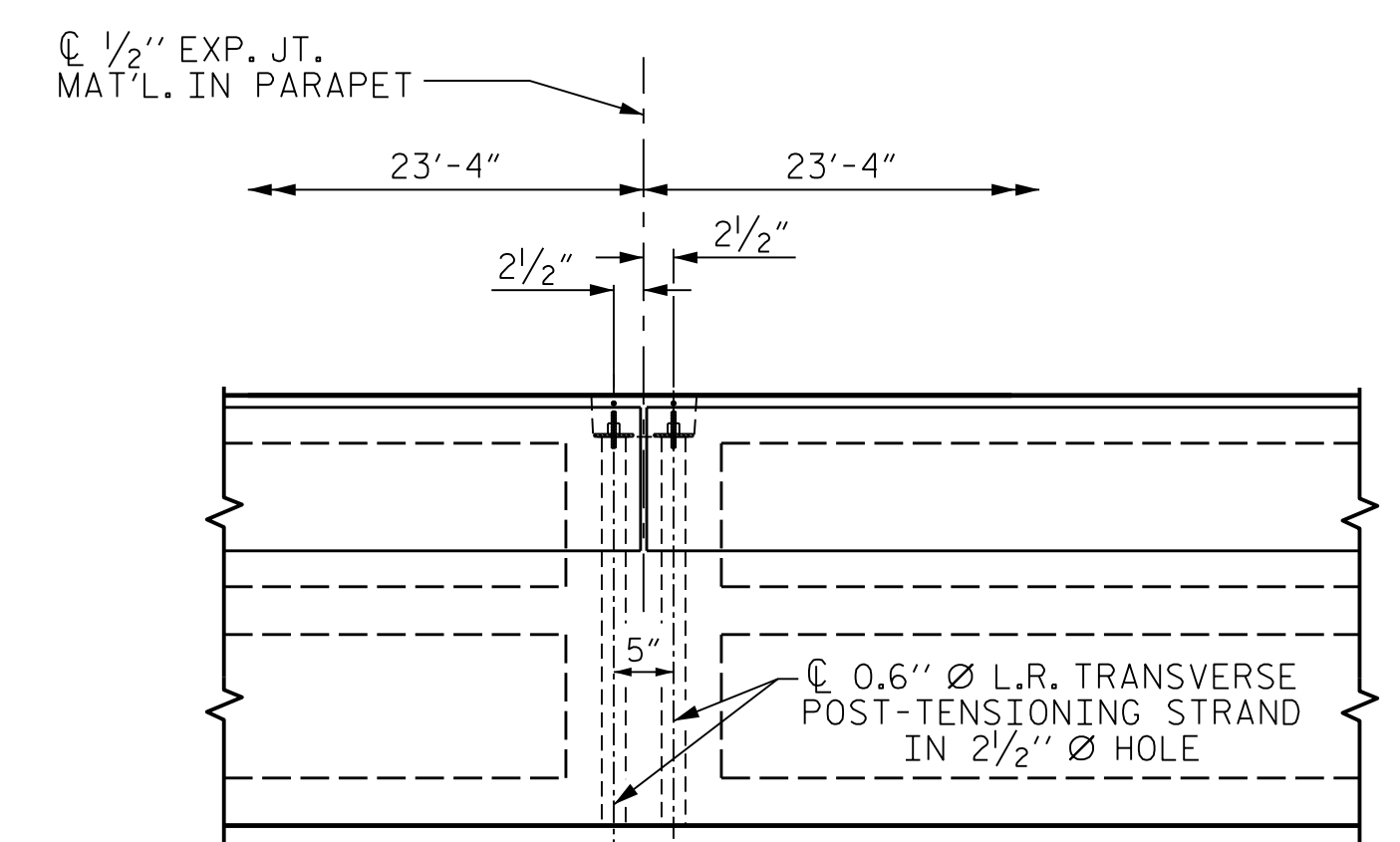


PLOT DRIVER: NCDOT STRUCTURES DEFAULT PLOTTER.plt  
 USER: DCARTER  
 DATE: 3/31/2021  
 TIME: 1:57:44 PM  
 FILE: ... \SUPERSTRUCTURE PLAN OF SPAN A



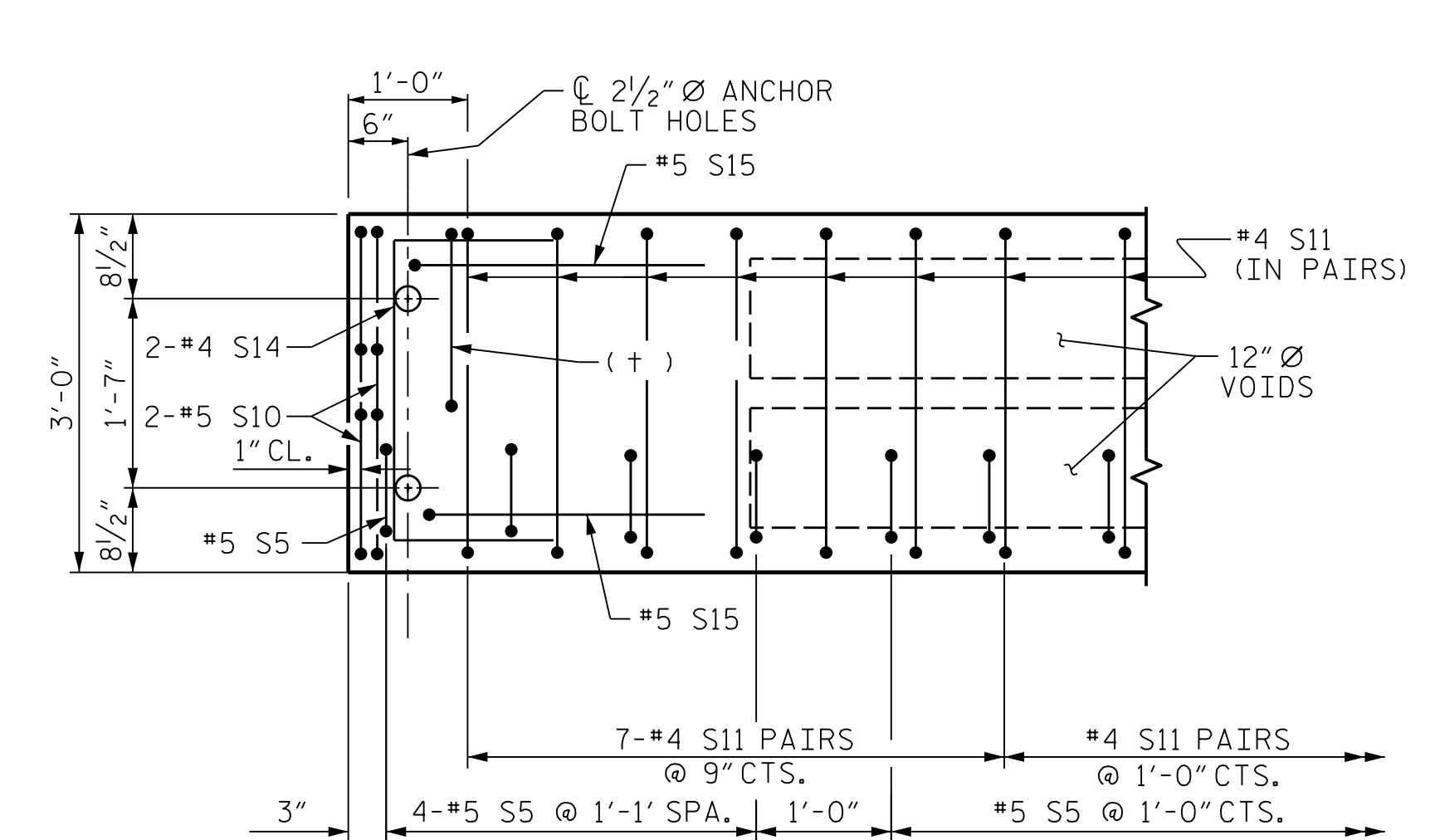
**PLAN OF UNIT**

† = FOR DETAILS AND REINFORCING STEEL IN SIDEWALK, SEE "SIDEWALK DETAILS" SHEET.  
 # = FOR DETAILS AND REINFORCING STEEL IN CONCRETE PARAPET, SEE "CONCRETE PARAPET DETAILS" SHEET.



**DETAIL "B"**

"S" BARS MAY BE SHIFTED AS NECESSARY TO MAINTAIN 1" CLEAR TO GROUDED RECESS AND 2 1/2" Ø TRANSVERSE POST-TENSIONING STRAND HOLES

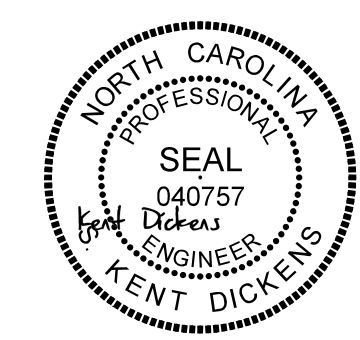


**DETAIL "A"**

(TYPICAL EACH END OF UNIT)  
 NOTE: TYPE 1 EXTERIOR UNIT SHOWN - TYPE 2 AND 3 INTERIOR UNITS SIMILAR EXCEPT OMIT #5 S5 & #4 S6 BARS.  
 (+) = #4S6 @ TYPE 1 UNITS  
 #4S7 @ TYPE 2 UNITS

PROJECT NO. 17BP.14.R.212  
 JACKSON COUNTY  
 STATION: 19+91.00 -L-

SHEET 2 OF 3



STATE OF NORTH CAROLINA  
 DEPARTMENT OF TRANSPORTATION  
 RALEIGH  
**SUPERSTRUCTURE**  
 3'-0" X 2'-0"  
**PRESTRESSED CONCRETE**  
**CORED SLAB UNIT**

REVISIONS						SHEET NO. S-6 TOTAL SHEETS 20
NO.	BY:	DATE:	NO.	BY:	DATE:	
1	--	--	3	--	--	
2	--	--	4	--	--	

DES BY: S. DHONDE	DATE: 12/19	DWG BY: B. PETERSON	DATE: 08/19
DES CHK: J. ROBERTS	DATE: 12/19	CHK BY: K. DICKENS	DATE: 02/20

**HDR** HDR Engineering, Inc. of the Carolinas  
 555 Fayetteville St., Suite 900 Raleigh, N.C. 27601  
 N.C.B.E.L.S. License Number: F-0116

1/25/2022  
**DOCUMENT NOT CONSIDERED FINAL**  
**UNLESS ALL SIGNATURES COMPLETED**