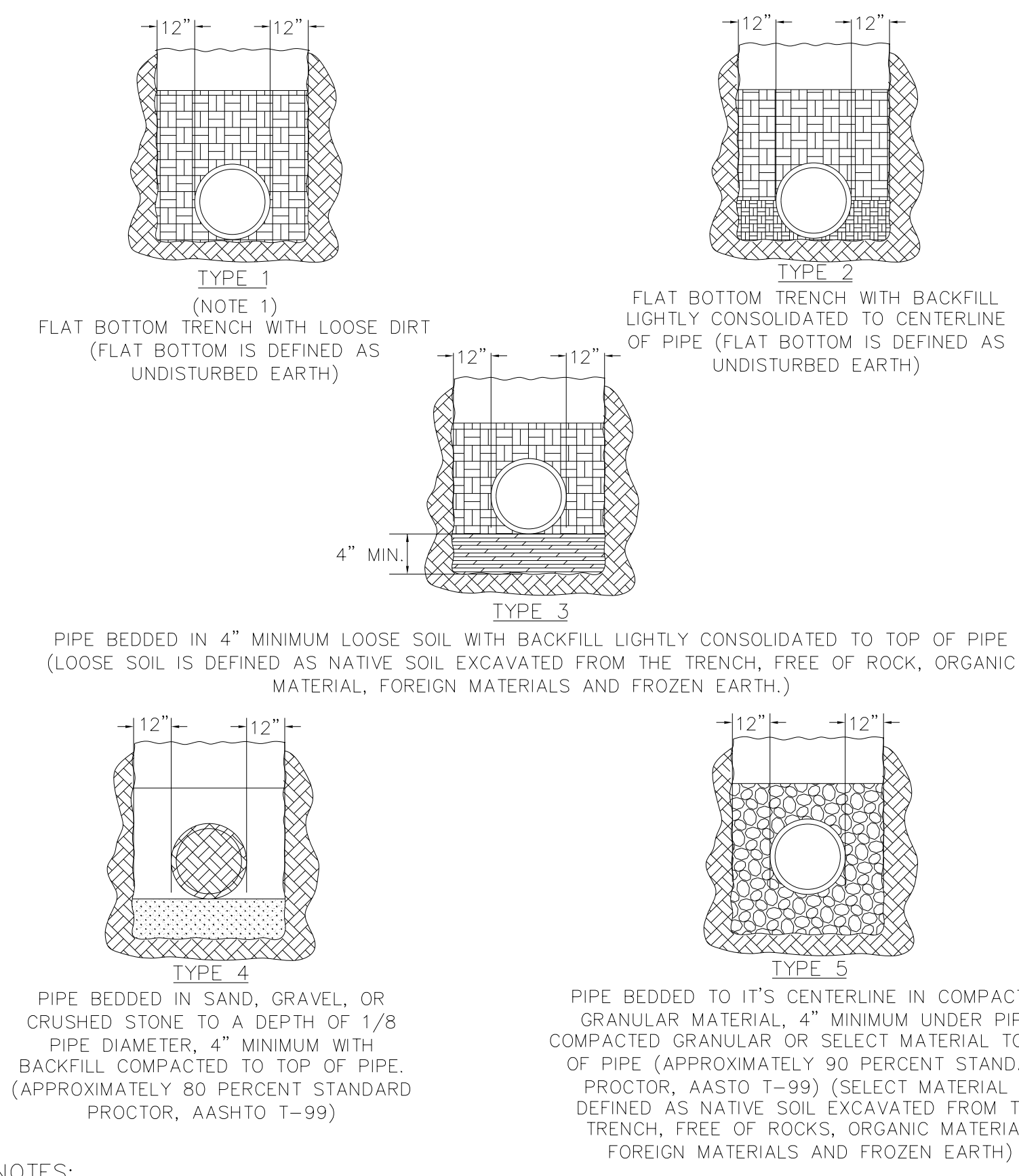


6-6-23

V:\NC\Utility\031730-21 49-0159 CULL BR UC\Utility Coordination\Utilities\490159\_UTL\_UC\_UC-03A.dgn

**JACKSON COUNTY**

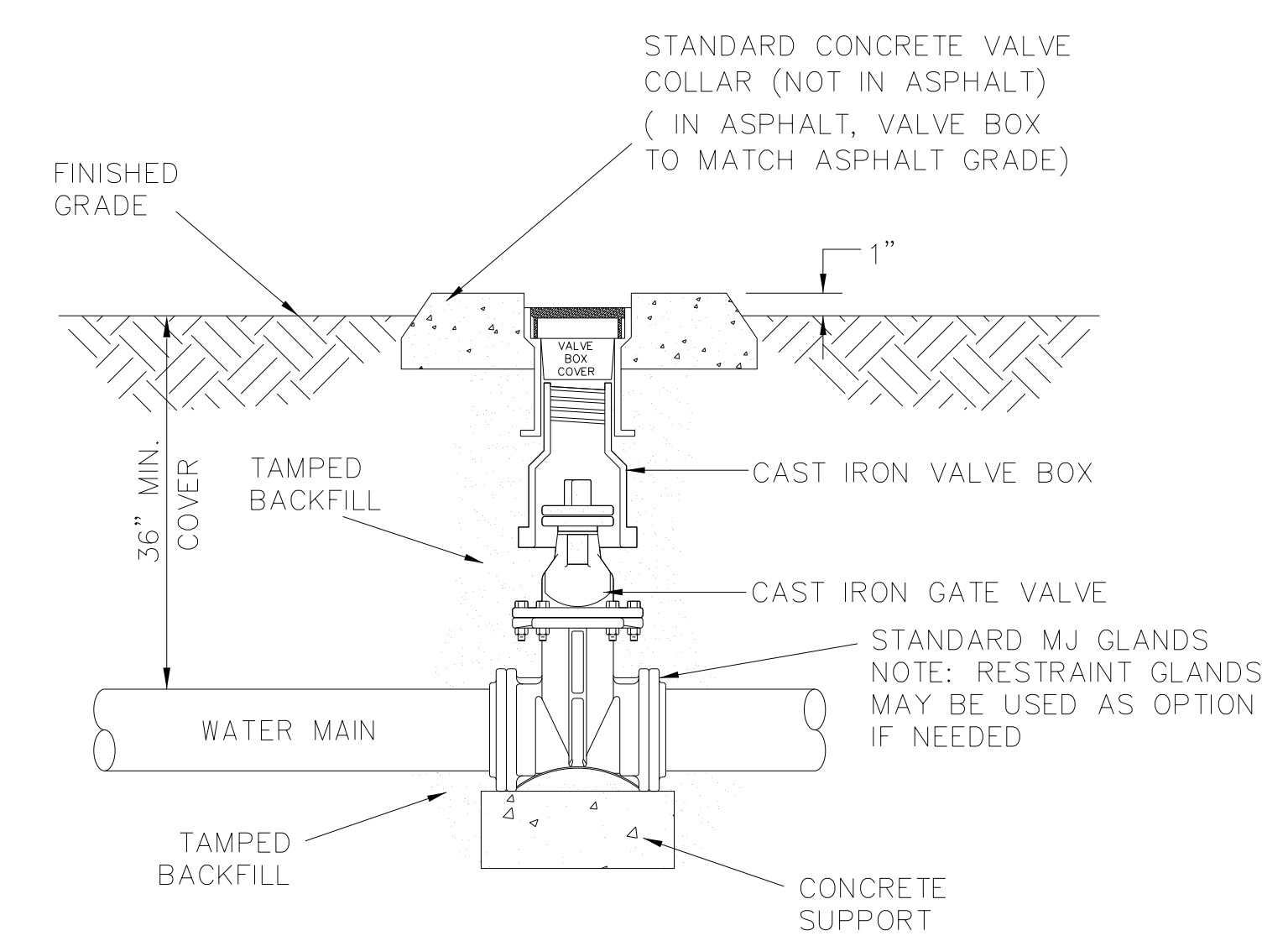
PROJECT REFERENCE NO. <b>17BP.14.R.212</b>	SHEET NO. <b>UC-3A</b>
DESIGNED BY: <b>DRD</b>	
DRAWN BY: <b>DRF</b>	
CHECKED BY: <b>DWH</b>	
APPROVED BY: <b>RMS</b>	
REVISED:	6/6/2023
NORTH CAROLINA DEPARTMENT OF TRANSPORTATION	
UTILITIES ENGINEERING SEC. PHONE: (919) 707-6690 FAX: (919) 1250-4151	
UTILITY CONSTRUCTION PLANS ONLY	
<b>DOCUMENT NOT CONSIDERED FINAL UNTIL ALL SIGNATURES ARE COMPLETED</b>	



- NOTES:**
- FOR NORMAL PIPE SIZES 14 INCH AND LARGER, CONSIDERATION SHOULD BE GIVEN TO THE USE OF LAYING CONDITIONS OTHER THAN TYPE 1.
  - CONSIDERATION OF THE PIPE-ZONE EMBEDMENT CONDITIONS INCLUDED IN THIS FIGURE MAY BE INFLUENCED BY FACTORS OTHER THAN PIPE STRENGTH. FOR ADDITIONAL INFORMATION ON PIPE BEDDING AND BACKFILL, SEE ANSI/AWWA C600.

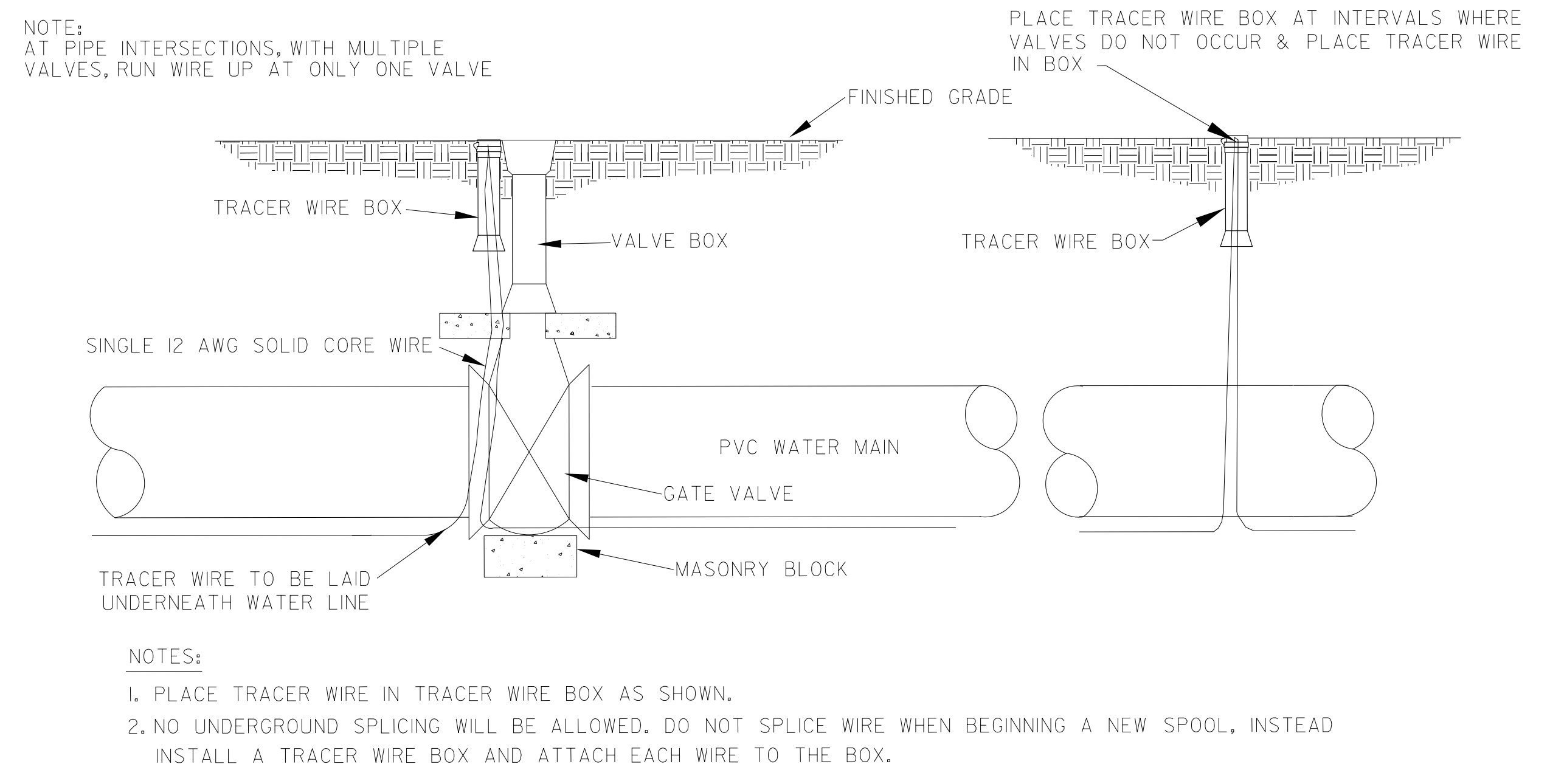
**WATER MAIN EMBEDMENT DETAILS**

NOT TO SCALE



**INLINE VALVE DETAIL**

NOT TO SCALE



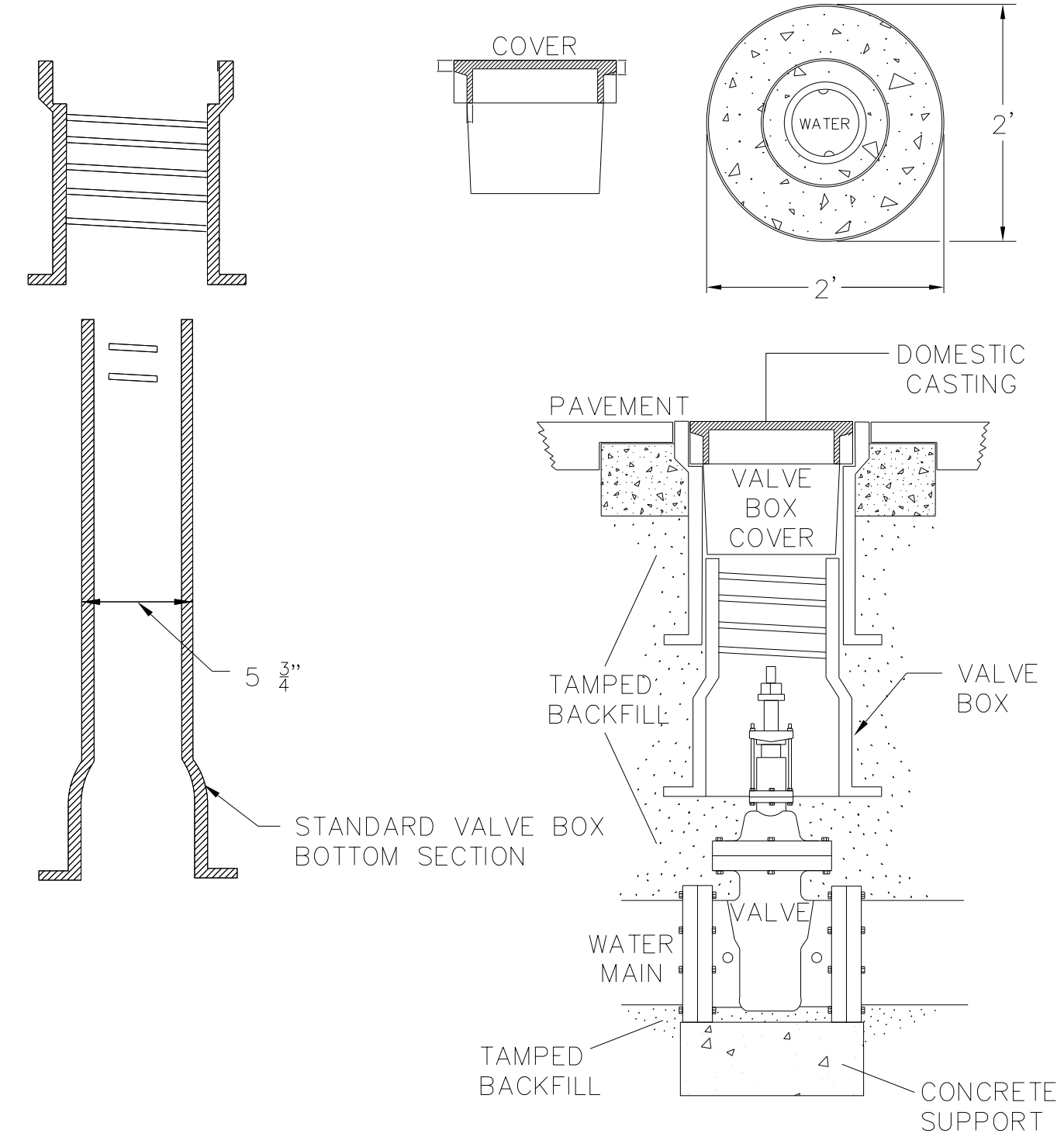
- NOTES:**
- PLACE TRACER WIRE IN TRACER WIRE BOX AS SHOWN.
  - NO UNDERGROUND SPLICING WILL BE ALLOWED. DO NOT SPLICE WIRE WHEN BEGINNING A NEW SPOOL, INSTEAD INSTALL A TRACER WIRE BOX AND ATTACH EACH WIRE TO THE BOX.

**TYPICAL TRACER WIRE INSTALLATION DETAIL**

NOT TO SCALE

- NOTES:**
- CONCRETE VALVE COLLAR REQUIRED ON ALL VALVES.

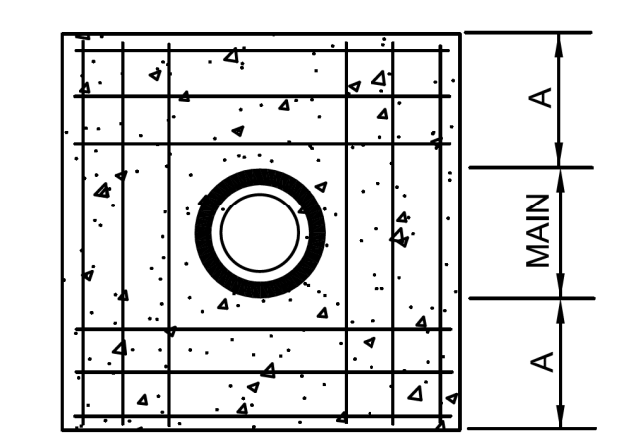
APPROVED METHOD FOR EXTENSION OF VALVE BOX



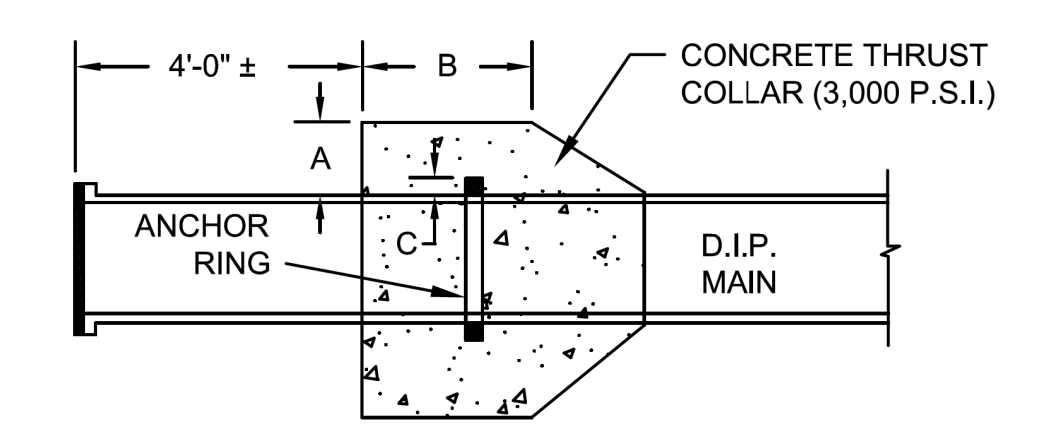
**NOTE:**  
VALVE BOX SHALL BE PER OWNER'S SPECIFICATIONS.

**VALVE BOX INSTALLATION**

NOT TO SCALE

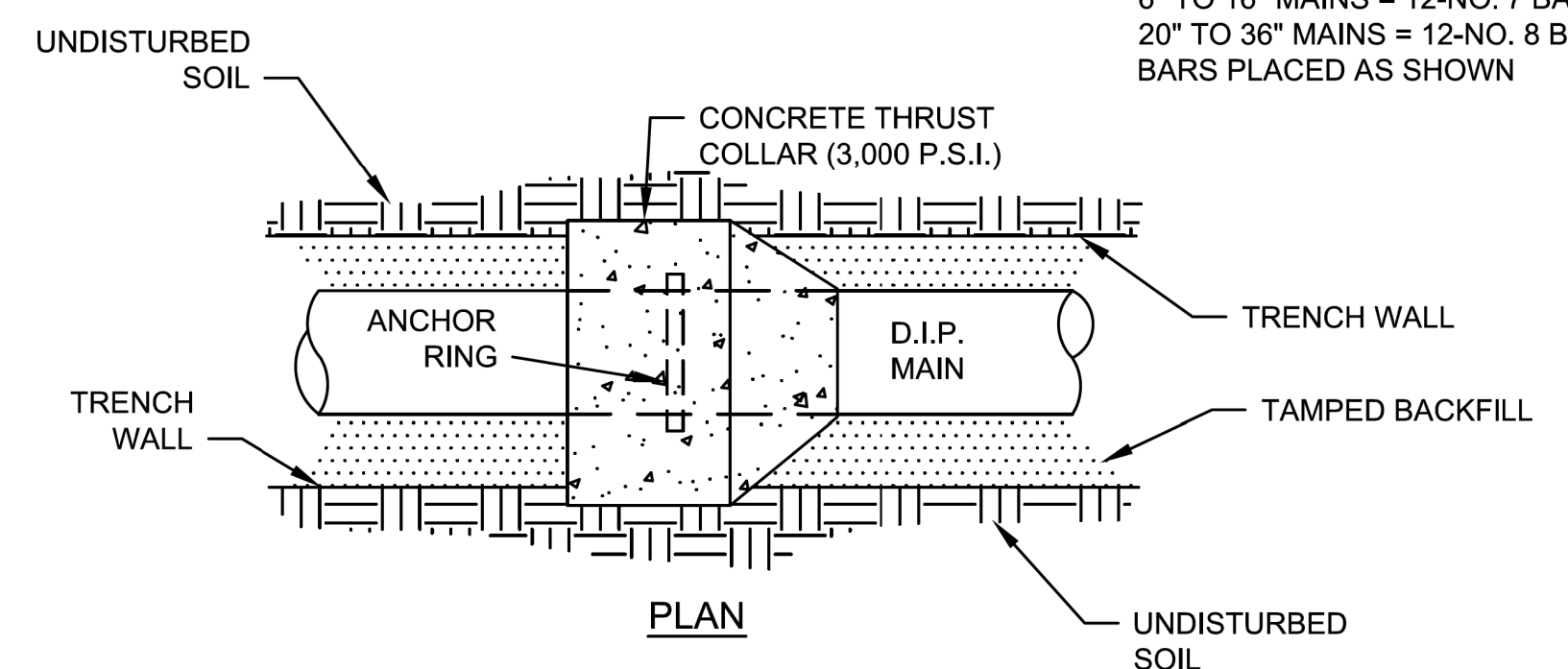


**REINFORCING**



**SECTION**

- NOTE:**  
6" TO 16" MAINS = 12-NO. 7 BARS  
20" TO 36" MAINS = 12-NO. 8 BARS  
BARS PLACED AS SHOWN



**PLAN**

SCHEDULE				
PIPE DIAMETER	CONCRETE THRUST COLLAR	ANCHOR COLLAR	RINGS REQUIRED	
	A	B	C	
6", 8", 12"	1'-0"	1'-0"	2"	ONE
16"	1'-4"	1'-0"	2"	ONE
20"	1'-4"	1'-0"	3"	ONE
24"	1'-4"	1'-0"	3"	TWO
30"	1'-4"	1'-2"	4"	TWO
36"	1'-4"	1'-4"	4"	TWO

**THRUST COLLAR INSTALLATION**

NOT TO SCALE

**V&M**  
Vaughn & Melton  
Consulting Engineers

Asheville, North Carolina  
828-253-2796

Tri-Cities, TN 423-467-8401  
 Knoxville, TN 865-546-5800  
 Spartanburg, SC 864-574-4775  
 Charleston, SC 843-974-5650  
 Modesto, CA 209-248-6600  
 Charlotte, NC 704-357-0488  
 Boone, NC 828-355-9933  
 Kennesaw, GA 770-621-3590

Copyright © 2019 Vaughn & Melton, Inc. All Rights Reserved