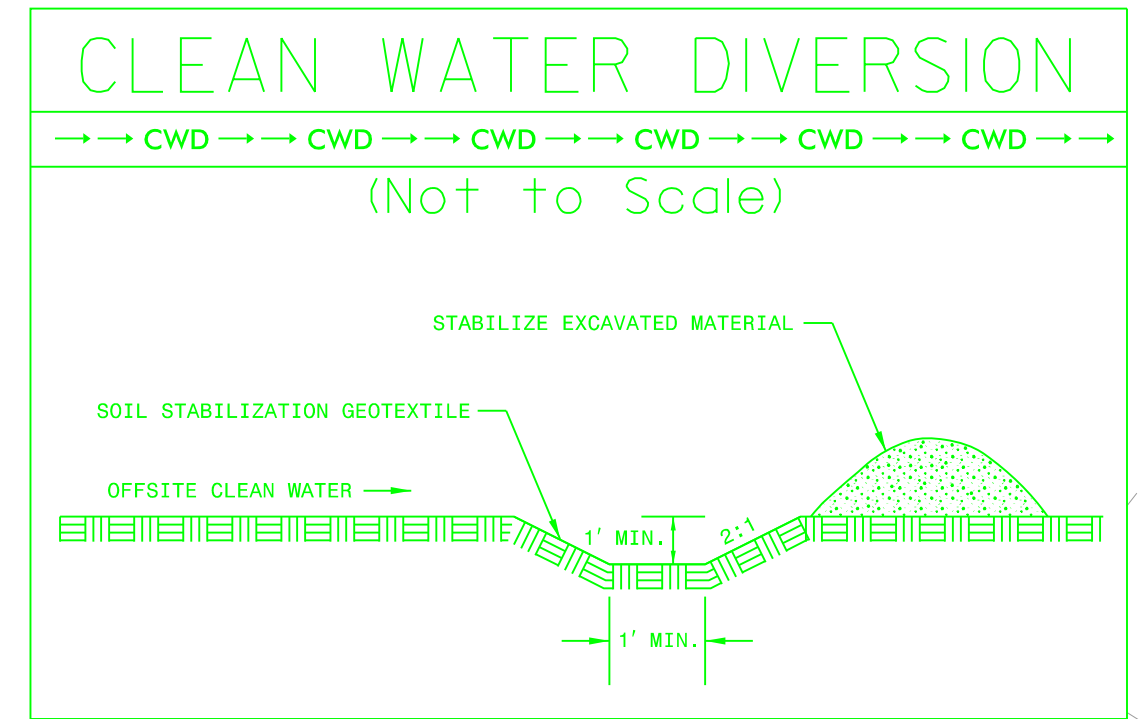


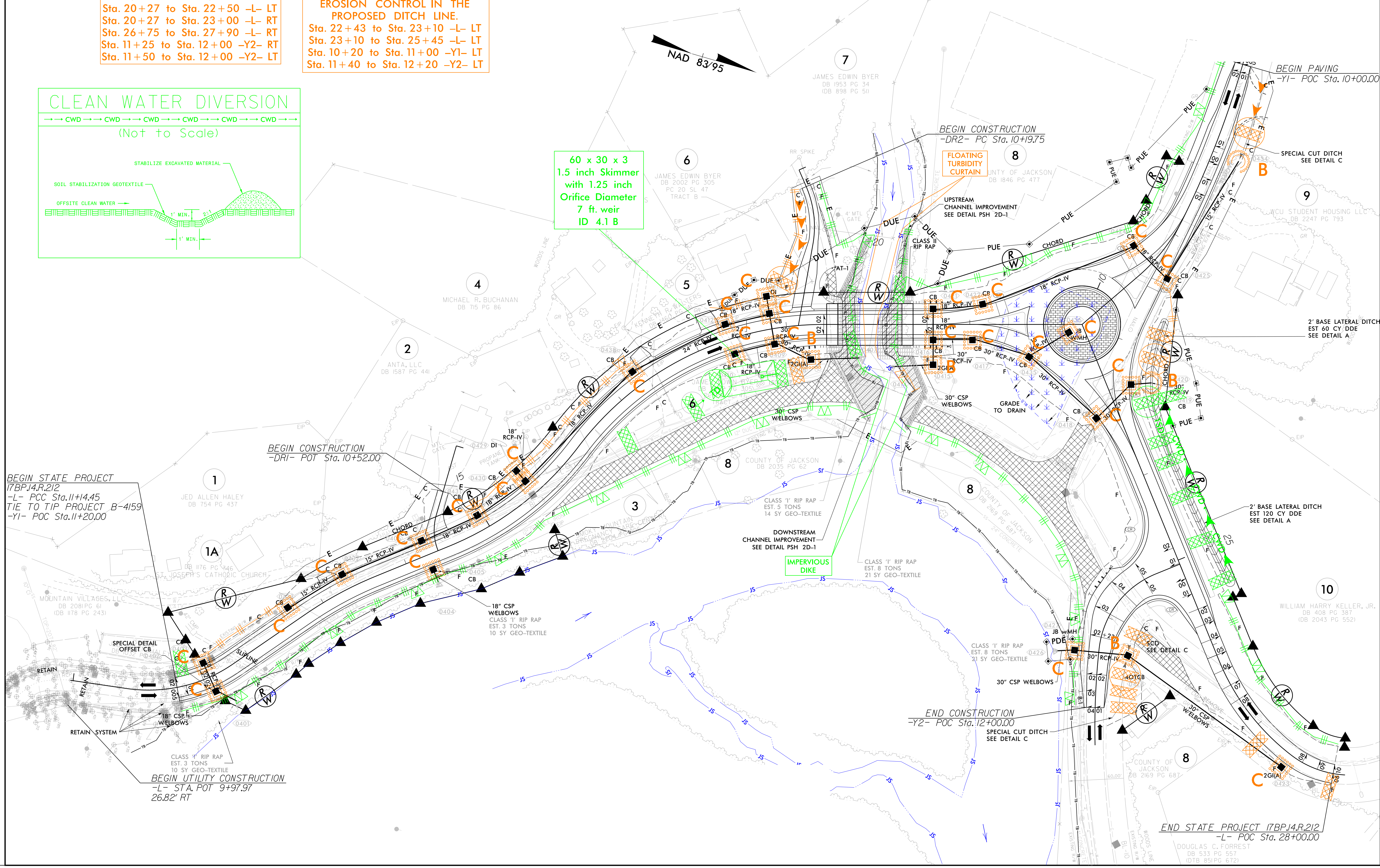
Place Matting for Erosion Control on Slopes as Work Allows.  
Sta. 12+25 to Sta. 14+00 -L- LT  
Sta. 19+20 to Sta. 19+30 -L- LT  
Sta. 19+00 to Sta. 19+55 -L- RT  
Sta. 20+27 to Sta. 22+50 -L- LT  
Sta. 20+27 to Sta. 23+00 -L- RT  
Sta. 26+75 to Sta. 27+90 -L- RT  
Sta. 11+25 to Sta. 12+00 -Y2- RT  
Sta. 11+50 to Sta. 12+00 -Y2- LT

Install Coir Fiber Matting for Erosion Control 900 Grams per Square Meter on Floodplains as Work Allows.

INSTALL MATTING FOR EROSION CONTROL IN THE PROPOSED DITCH LINE.  
Sta. 22+43 to Sta. 23+10 -L- LT  
Sta. 23+10 to Sta. 25+45 -L- LT  
Sta. 10+20 to Sta. 11+00 -Y1- LT  
Sta. 11+40 to Sta. 12+20 -Y2- LT



60 x 30 x 3  
1.5 inch Skimmer  
with 1.25 inch  
Orifice Diameter  
7 ft. weir  
ID 4.1 B



REVISIONS

PLOT DRIVER: NCDOT\_pdf\_color\_eng\_100.plt  
USER: DWAGNER  
FILE: NCDOT\NCDOT\_Western\_Div\_Or-Coll\_M\_V\NCDOT-17BP.14.R.212\_Culwhee6.0\_CAD\_BIM6.2\_Work\_In\_Progress\17BP.14.R.212-Erosion Control\1490159\_EC\_PSH.dgn

PENTABLE: NCDOT\_EC\_FINAL\_17BP14.R.212.tbl  
TIME: 5:05:16 PM  
DATE: 3/16/2023