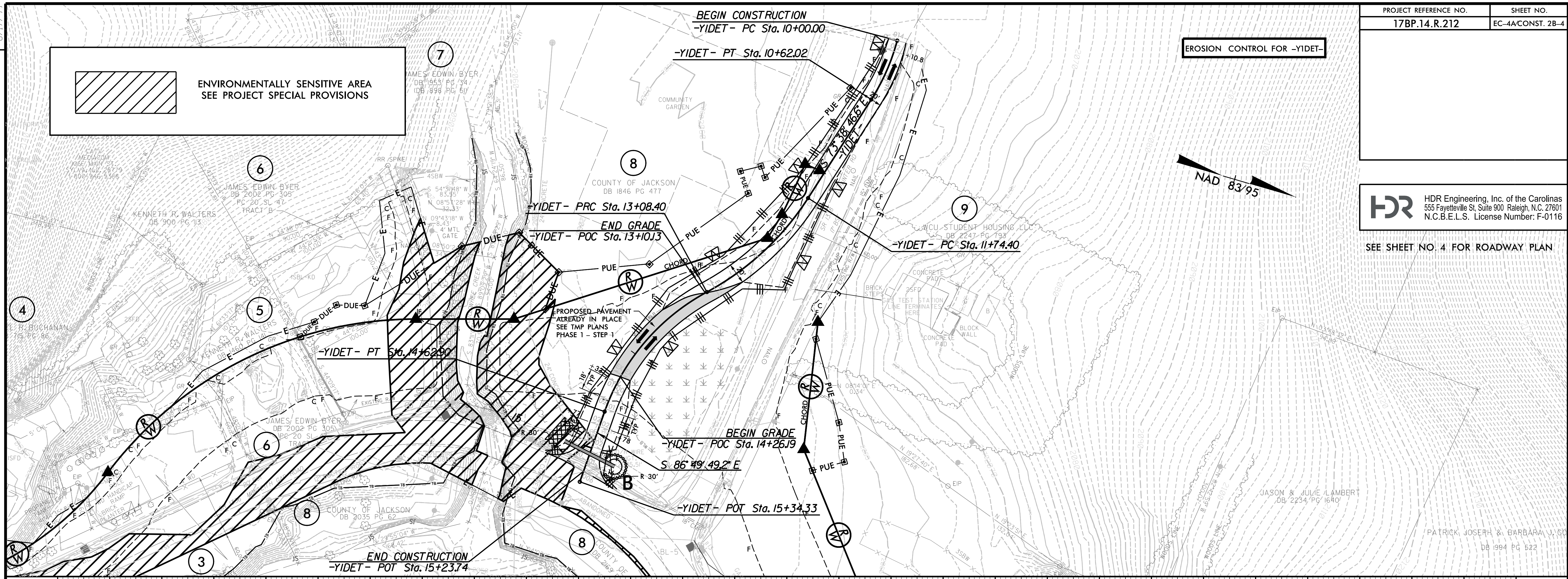
 ENVIRONMENTALLY SENSITIVE AREA
SEE PROJECT SPECIAL PROVISIONS

EROSION CONTROL FOR -YIDET-

 HDR Engineering, Inc. of the Carolinas
555 Fayetteville St. Suite 900 Raleigh, N.C. 27601
N.C.B.E.L.S. License Number: F-0116

SEE SHEET NO. 4 FOR ROADWAY PLAN



-YIDET-

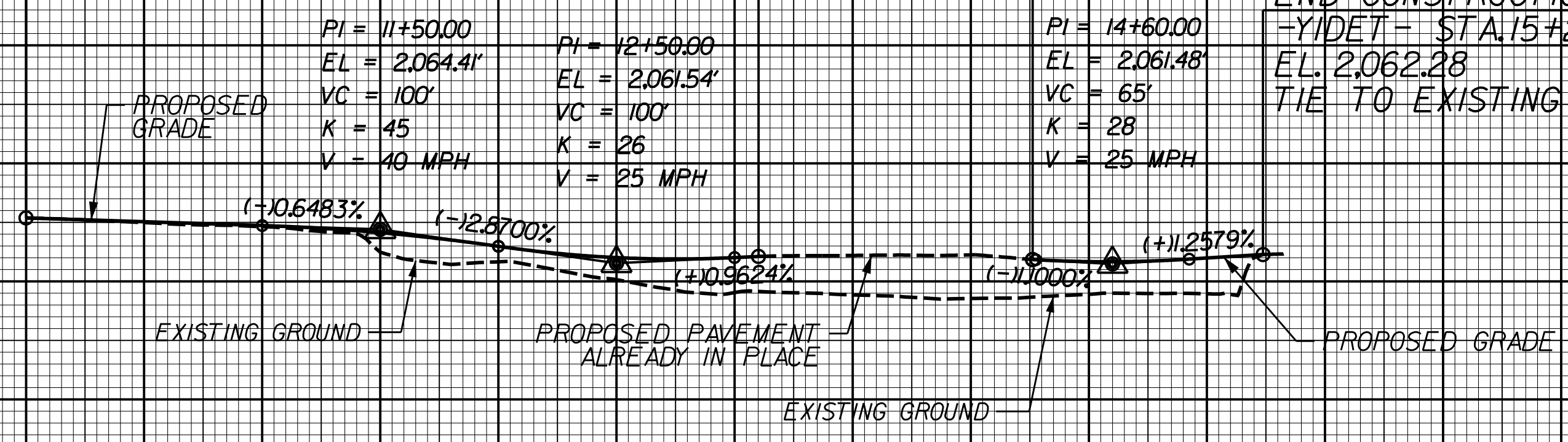
BEGIN GRADE
BEGIN CONSTRUCTION
-YIDET- STA. 10+00.00
EL. 2,065.38
TIE TO EXISTING

END GRADE
-YIDET- STA. 13+10.13 =
-RAB WEST - STA. 11+31.28
EL. 2,062.12

PI = 11+50.00	PI = 12+50.00
EL = 2,064.41	EL = 2,061.54
VC = 100'	VC = 100'
K = 45	K = 26
V = 40 MPH	V = 25 MPH

BEGIN GRADE
-YIDET- STA. 14+26.19 =
-RAB EAST - STA. 10+25.71
EL. 2,061.85

END GRADE
END CONSTRUCTION
-YIDET- STA. 15+23.74
EL. 2,062.28
TIE TO EXISTING



10 11 12 13 14 15

PLOT DRIVER: NCDOT_color_eng_50.plt PENTABLE: NCDOT_EC_C&C_BW.tbl
 USER: DWAGNER DATE: 1/18/2022 TIME: 4:58:26 PM
 FILE: NCDOT\NCDOT_Western_Div_Or-Cell_M_NCDOT-17BP.14.R.212_Culwhee\6.0_CAD_BIM\6.2_Work_In_Progress\17BP.14.R.212-Erosion Control\490159_EC_PSH.dgn

REVISIONS

8.17.19