

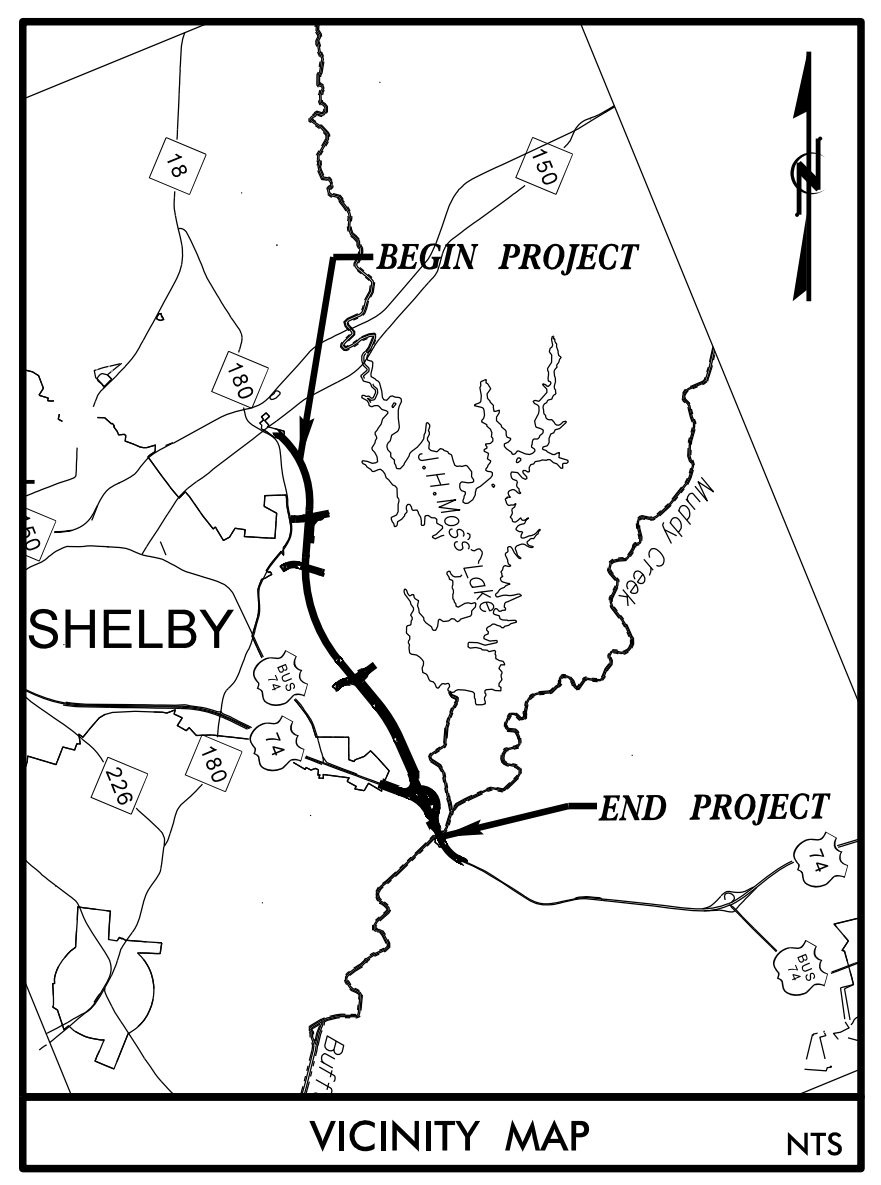
09, 08/95

TIP PROJECT: R-2707D

STATE OF NORTH CAROLINA
DIVISION OF HIGHWAYS

T.I.P. NO.	SHEET NO.
R-2707D	UO-1

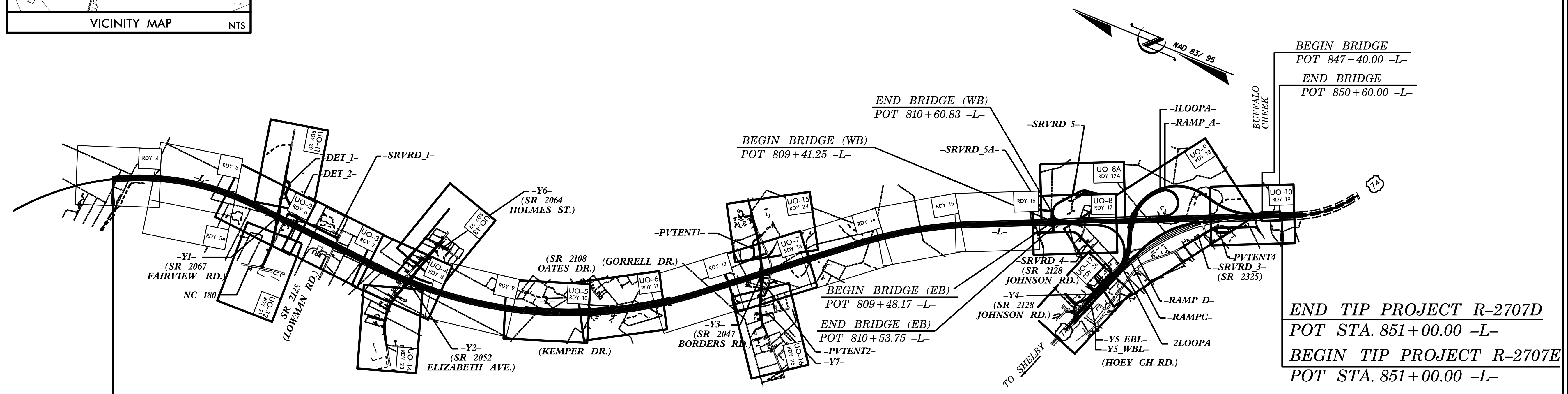
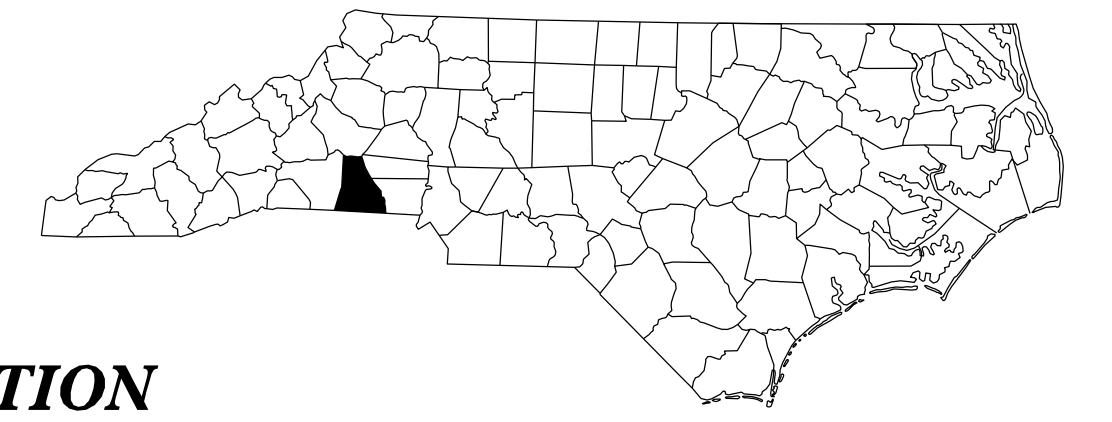
NOTE:
ALL UTILITY WORK SHOWN ON THIS SHEET WILL BE DONE BY OTHERS. NO PAYMENT WILL BE MADE TO THE CONTRACTOR FOR UTILITY WORK SHOWN ON THIS SHEET.



UTILITIES BY OTHERS PLANS CLEVELAND COUNTY

LOCATION: US 74, SHELBY BYPASS FROM EAST OF NC 150
TO EXISTING US 74, WEST OF SR 2238
(LONG BRANCH ROAD)

TYPE OF WORK: POWER DISTRIBUTION, COMMUNICATIONS AND GAS RELOCATION



END TIP PROJECT R-2707C
POC STA. 635+00.00 -L-

BEGIN TIP PROJECT R-2707D
POC STA. 635+00.00 -L-

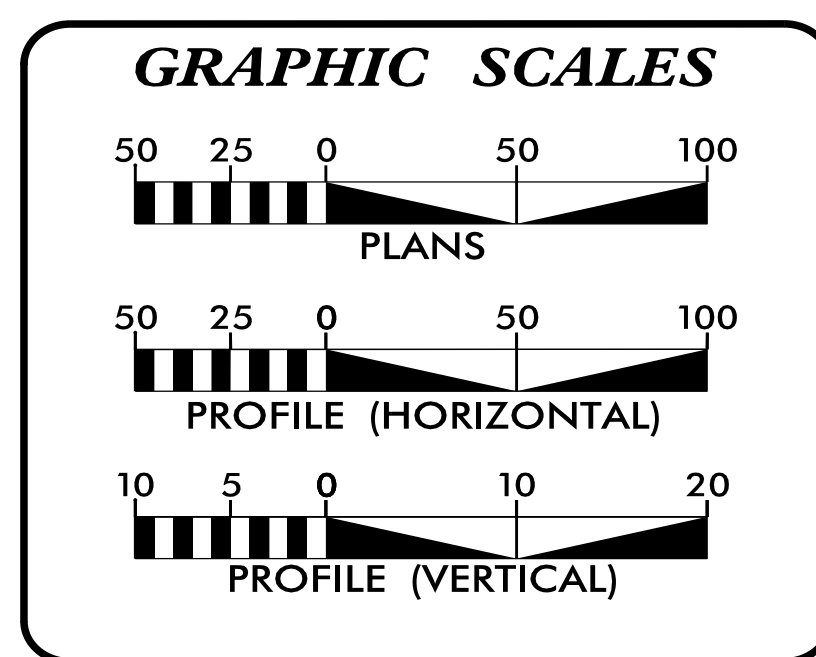
END TIP PROJECT R-2707D
POT STA. 851+00.00 -L-

BEGIN TIP PROJECT R-2707E
POT STA. 851+00.00 -L-

THIS PROJECT IS NOT WITHIN ANY CITY LIMITS

THIS IS A CONTROLLED ACCESS PROJECT
WITH ACCESS BEING LIMITED TO INTERCHANGES

CLEARING FOR THIS PROJECT SHALL BE PERFORMED TO THE LIMITS ESTABLISHED BY METHOD ____.



INDEX OF SHEETS

SHEET NO.:	DESCRIPTION:
UO-1	TITLE SHEET
UO-2 THRU UO-17	UBO PLAN SHEETS

UTILITY OWNERS WITH CONFLICTS

(A) POWER DISTRIBUTION - DUKE ENERGY
(B) COMMUNICATIONS - AT&T
(C) COMMUNICATIONS - RST GLOBAL
(D) COMMUNICATIONS - SEGRA
(E) COMMUNICATIONS - CONTERRA
(F) COMMUNICATIONS - SPECTRUM
(G) GAS - SHELBY GAS

PREPARED IN THE OFFICE OF:

Michael Baker
INTERNATIONAL

Michael Baker Engineering, Inc.
8000 Regency Parkway, Suite 600
Cary, NC 27518
919-463-5488

Brandy Creech PROJECT UTILITY COORDINATOR
Christina Newsome PROJECT UTILITY TECHNICIAN

DIVISION OF HIGHWAYS
DIVISION 12
1710 E. MARION STREET
P O BOX 47
SHELBY NC 28152
PHONE (980) 552-4200

Larry Carpenter, P.E. DIVISION CONSTRUCTION ENGINEER
Chad Drewery DIVISION UTILITY ENGINEER
Joseph T. Keolington, P.E. PROJECT ENGINEER

\$\$\$\$\$ SYSTEM \$\$\$\$\$\$
\$\$\$\$\$ DGN \$\$\$\$\$\$
\$\$\$\$\$ USERNAME \$\$\$\$\$\$



Stantec Consulting Services Inc.
801 Jones Franklin Road
Suite 300
Raleigh, NC 27606
Tel. (919) 851-6866
Fax. (919) 851-7024
www.stantec.com
License No. F-0672

UTILITIES BY OTHERS

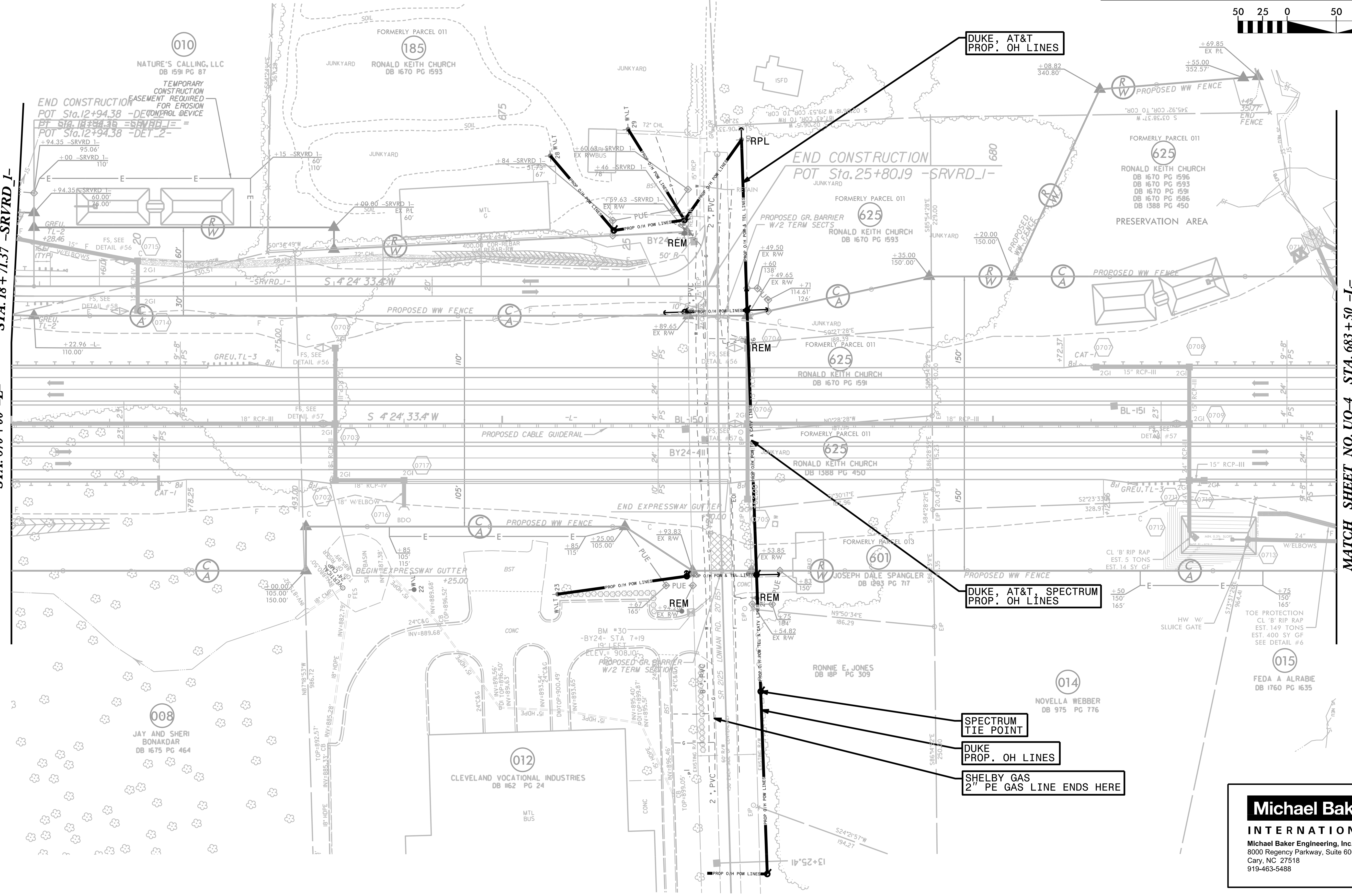
ALL PROPOSED UTILITY WORK SHOWN ON THIS SHEET WILL BE DONE BY OTHERS. NO PAYMENT WILL BE MADE TO THE CONTRACTOR FOR PROPOSED UTILITY WORK SHOWN ON THIS SHEET.



NAD 83/95

MATCH SHEET NO. UO-2
STA. 670+00 -L-

MATCH SHEET NO. UO-4
STA. 683+50 -L-



DUKE, AT&T
PROP. OH LINES

DUKE, AT&T, SPECTRUM
PROP. OH LINES

SPECTRUM
TIE POINT

DUKE
PROP. OH LINES

SHELBY GAS
2" PE GAS LINE ENDS HERE

Michael Baker
INTERNATIONAL
Michael Baker Engineering, Inc.
8000 Regency Parkway, Suite 600
Cary, NC 27518
919-463-5488

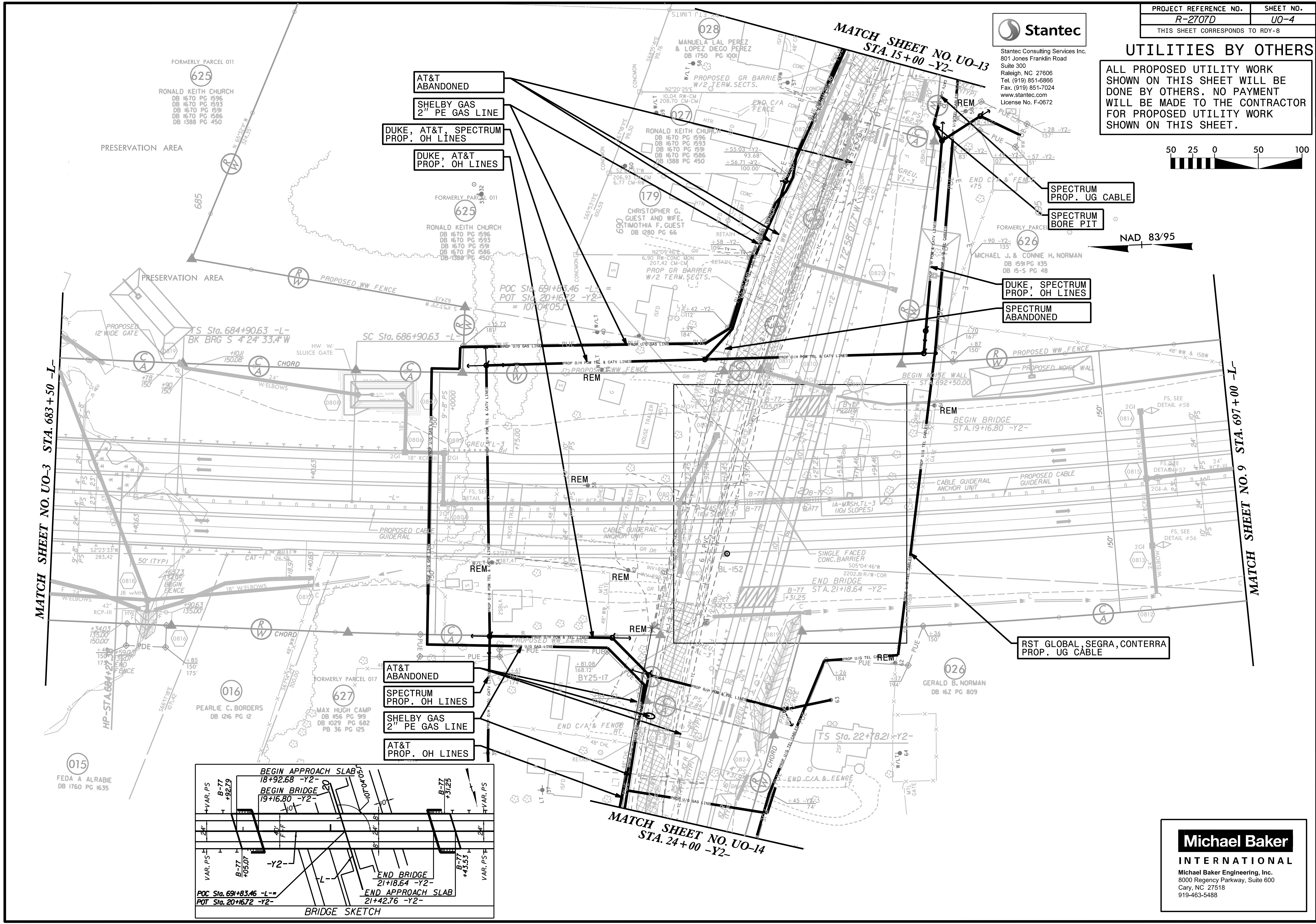


UTILITIES BY OTHERS

ALL PROPOSED UTILITY WORK SHOWN ON THIS SHEET WILL BE DONE BY OTHERS. NO PAYMENT WILL BE MADE TO THE CONTRACTOR FOR PROPOSED UTILITY WORK SHOWN ON THIS SHEET.



NAD 83/95



MATCH SHEET NO. UO-3 STA. 683+50 -L-

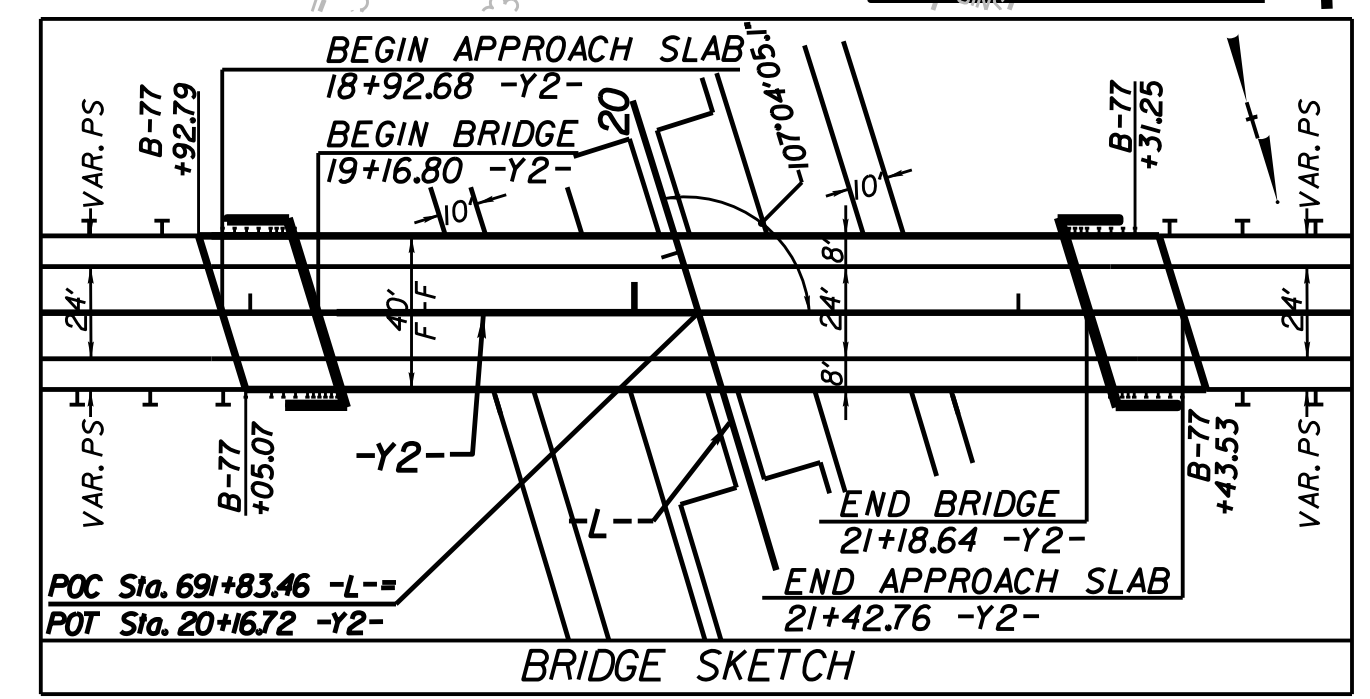
MATCH SHEET NO. 9 STA. 697+00 -L-

AT&T ABANDONED
SHELBY GAS 2" PE GAS LINE
DUKE, AT&T, SPECTRUM PROP. OH LINES
DUKE, AT&T PROP. OH LINES

SPECTRUM PROP. UG CABLE
SPECTRUM BORE PIT
DUKE, SPECTRUM PROP. OH LINES
SPECTRUM ABANDONED

RST GLOBAL, SEGRA, CONTERRA PROP. UG CABLE

AT&T ABANDONED
SPECTRUM PROP. OH LINES
SHELBY GAS 2" PE GAS LINE
AT&T PROP. OH LINES



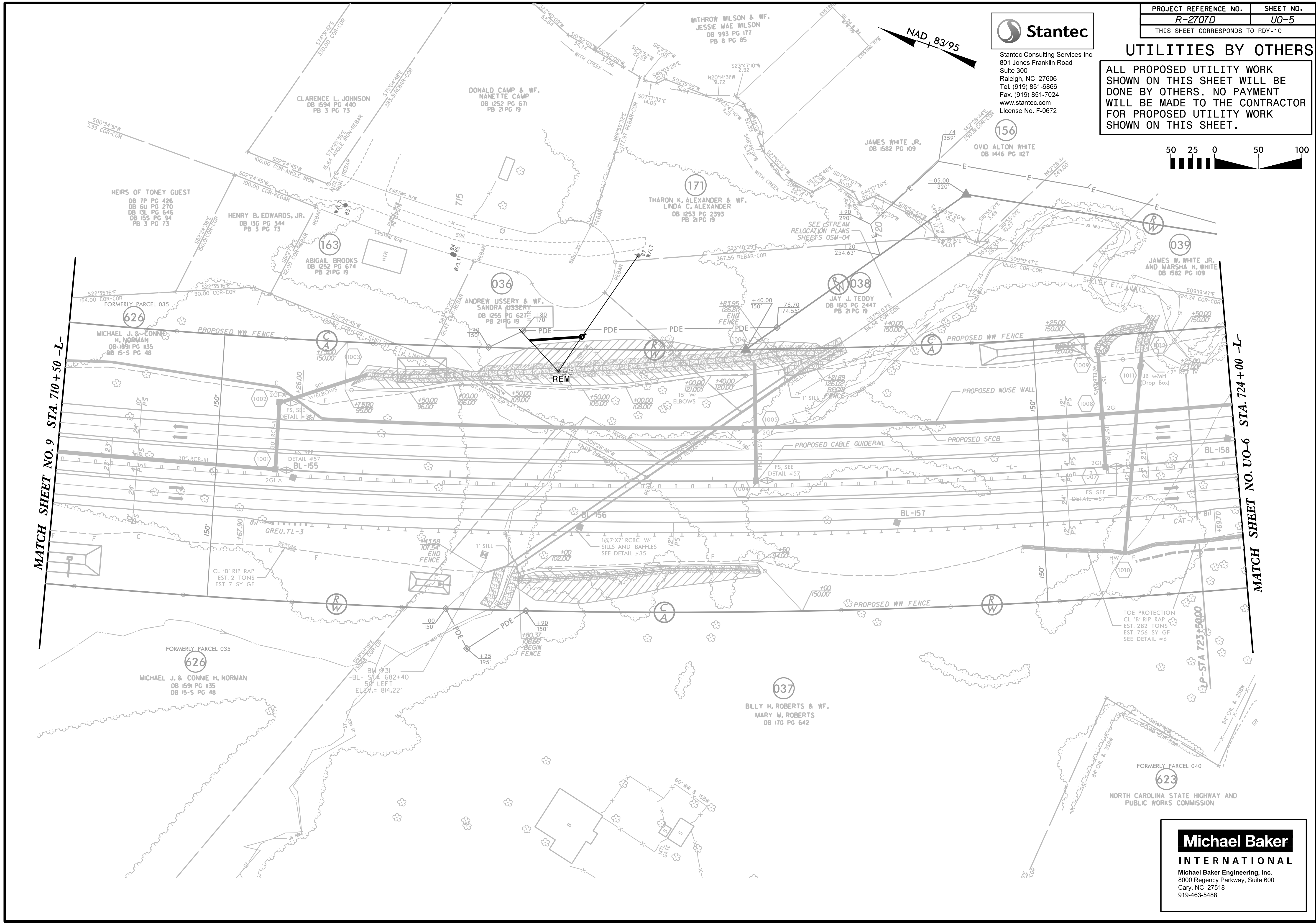
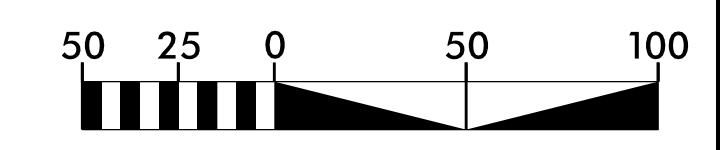
MATCH SHEET NO. UO-14 STA. 24+00 -Y2-

Michael Baker INTERNATIONAL
Michael Baker Engineering, Inc.
8000 Regency Parkway, Suite 600
Cary, NC 27518
919-463-5488



UTILITIES BY OTHERS

ALL PROPOSED UTILITY WORK SHOWN ON THIS SHEET WILL BE DONE BY OTHERS. NO PAYMENT WILL BE MADE TO THE CONTRACTOR FOR PROPOSED UTILITY WORK SHOWN ON THIS SHEET.

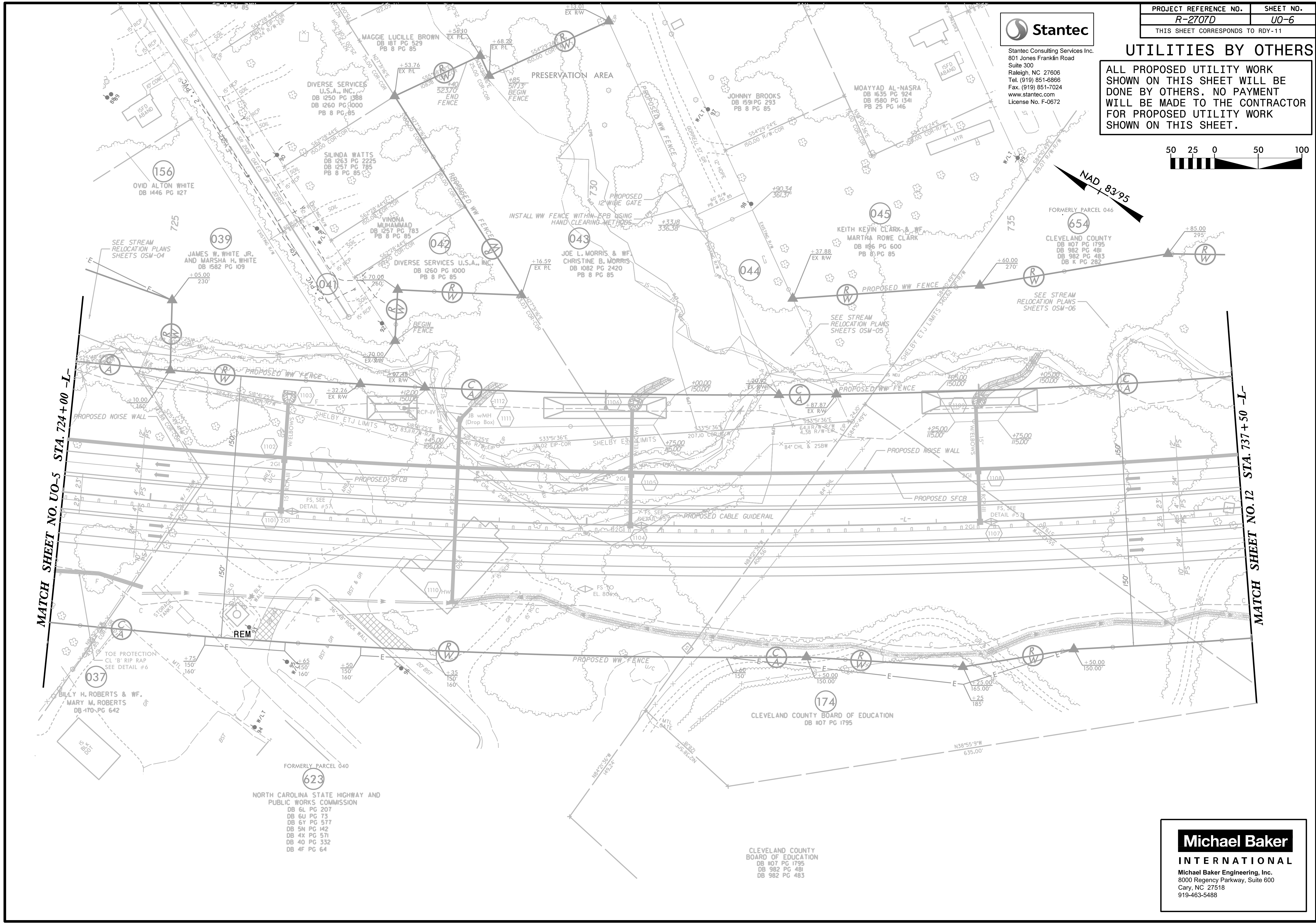




Stantec Consulting Services Inc.
 801 Jones Franklin Road
 Suite 300
 Raleigh, NC 27606
 Tel. (919) 851-6886
 Fax. (919) 851-7024
 www.stantec.com
 License No. F-0672

UTILITIES BY OTHERS

ALL PROPOSED UTILITY WORK SHOWN ON THIS SHEET WILL BE DONE BY OTHERS. NO PAYMENT WILL BE MADE TO THE CONTRACTOR FOR PROPOSED UTILITY WORK SHOWN ON THIS SHEET.



MATCH SHEET NO. U0-5 STA. 724+00 -L-

MATCH SHEET NO. 12 STA. 737+50 -L-

FORMERLY PARCEL 040
 623
 NORTH CAROLINA STATE HIGHWAY AND PUBLIC WORKS COMMISSION
 DB 6L PG 207
 DB 6U PG 73
 DB 6Y PG 577
 DB 5N PG 142
 DB 4X PG 571
 DB 4O PG 332
 DB 4F PG 64

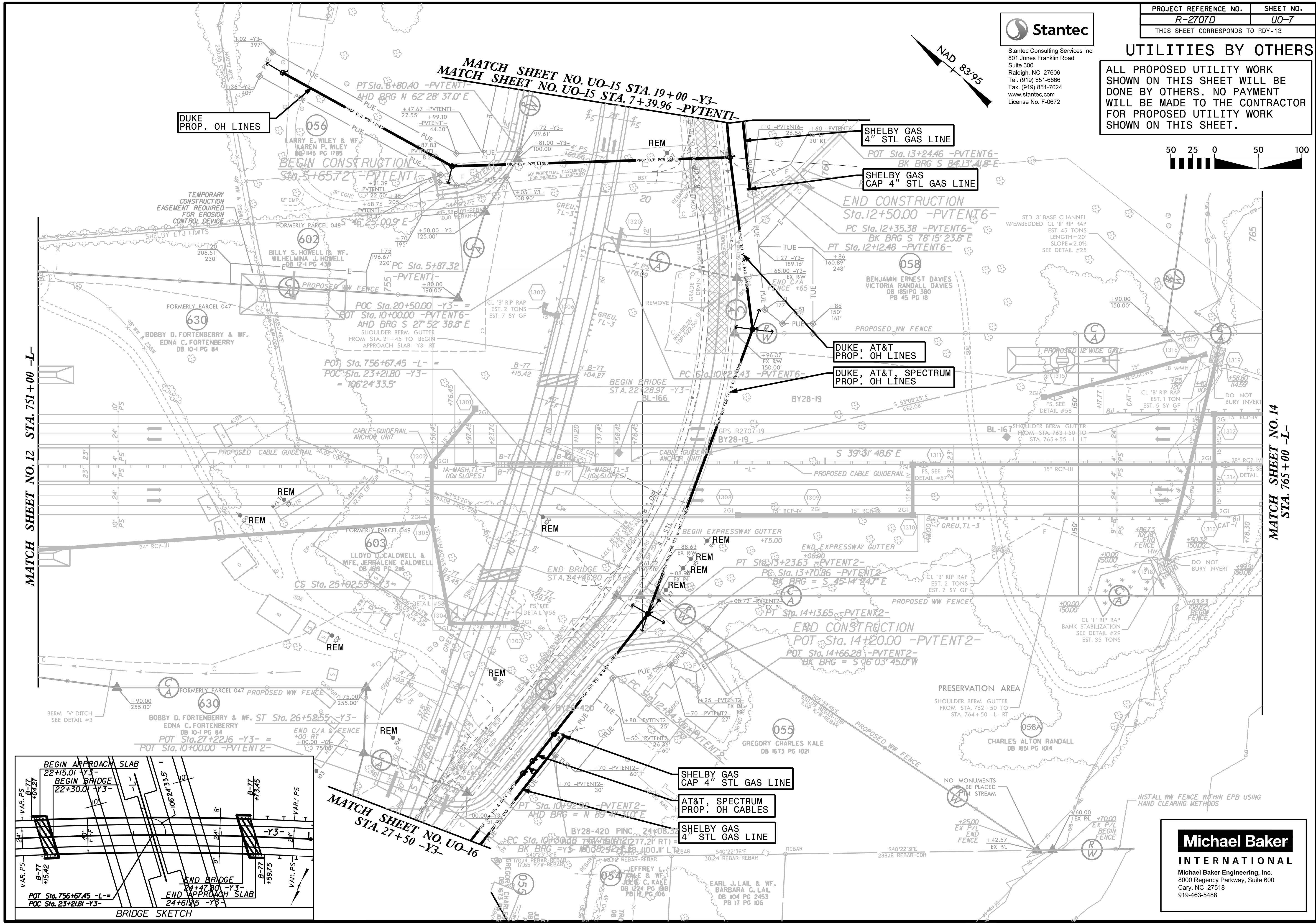
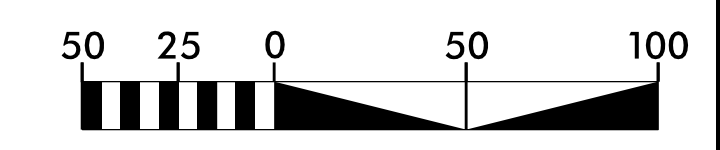
CLEVELAND COUNTY BOARD OF EDUCATION
 DB 107 PG 1795
 DB 982 PG 481
 DB 982 PG 483

Michael Baker INTERNATIONAL
 Michael Baker Engineering, Inc.
 8000 Regency Parkway, Suite 600
 Cary, NC 27518
 919-463-5488



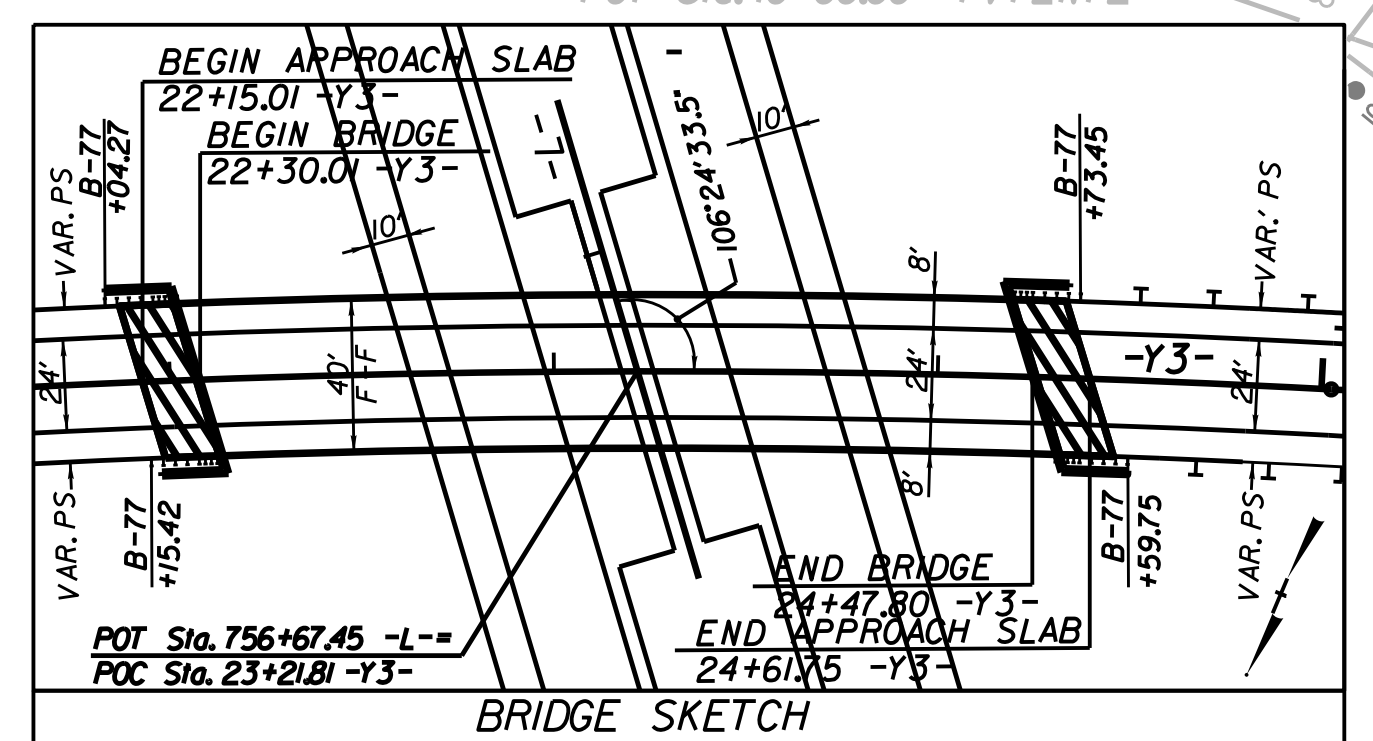
UTILITIES BY OTHERS

ALL PROPOSED UTILITY WORK SHOWN ON THIS SHEET WILL BE DONE BY OTHERS. NO PAYMENT WILL BE MADE TO THE CONTRACTOR FOR PROPOSED UTILITY WORK SHOWN ON THIS SHEET.



MATCH SHEET NO. 12 STA. 751+00 -L-

MATCH SHEET NO. 14 STA. 765+00 -L-



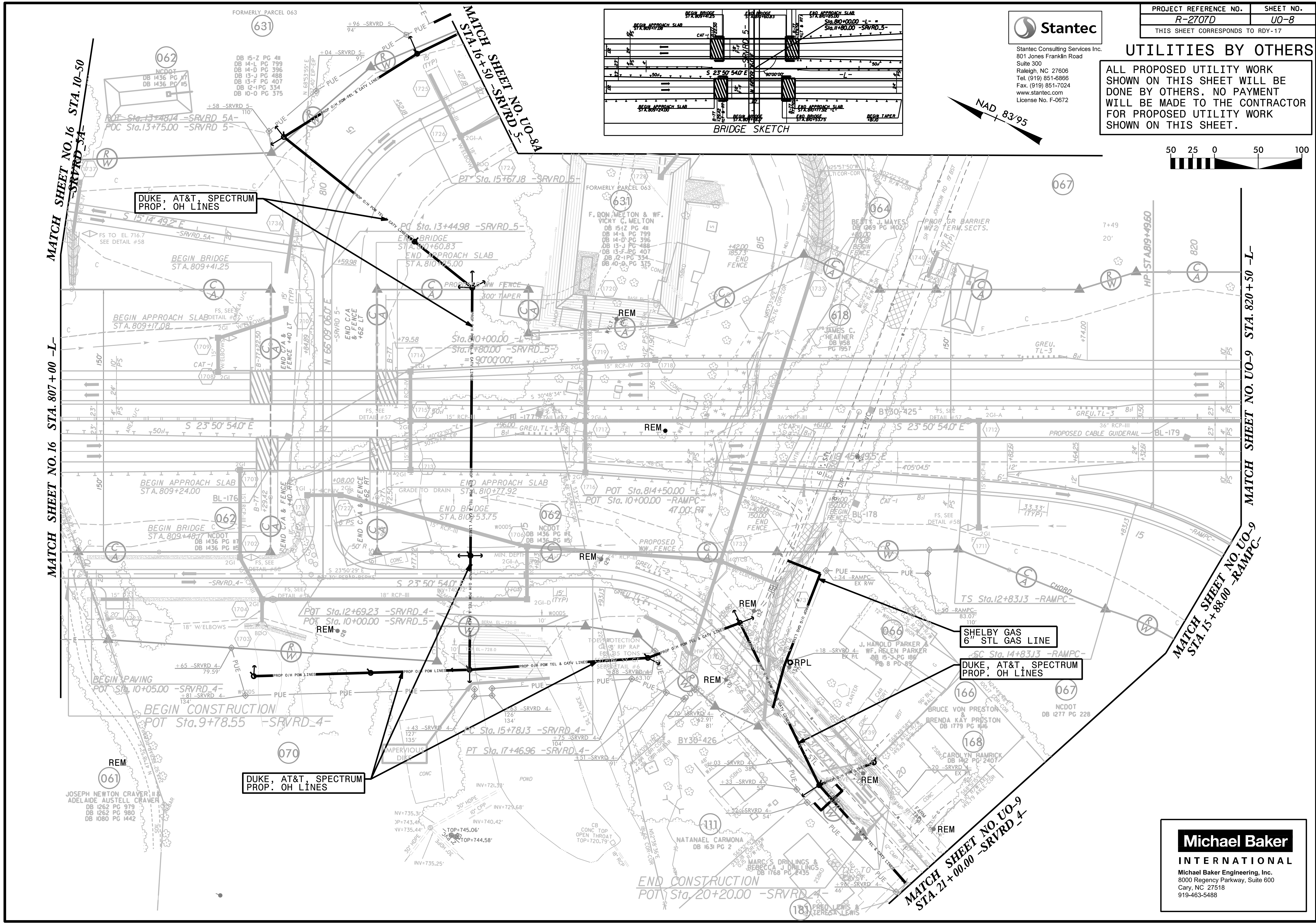
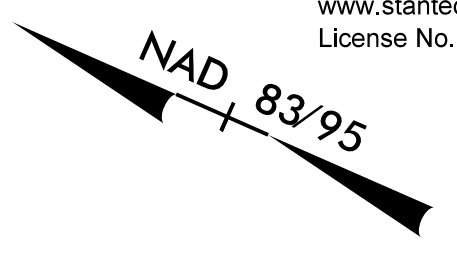
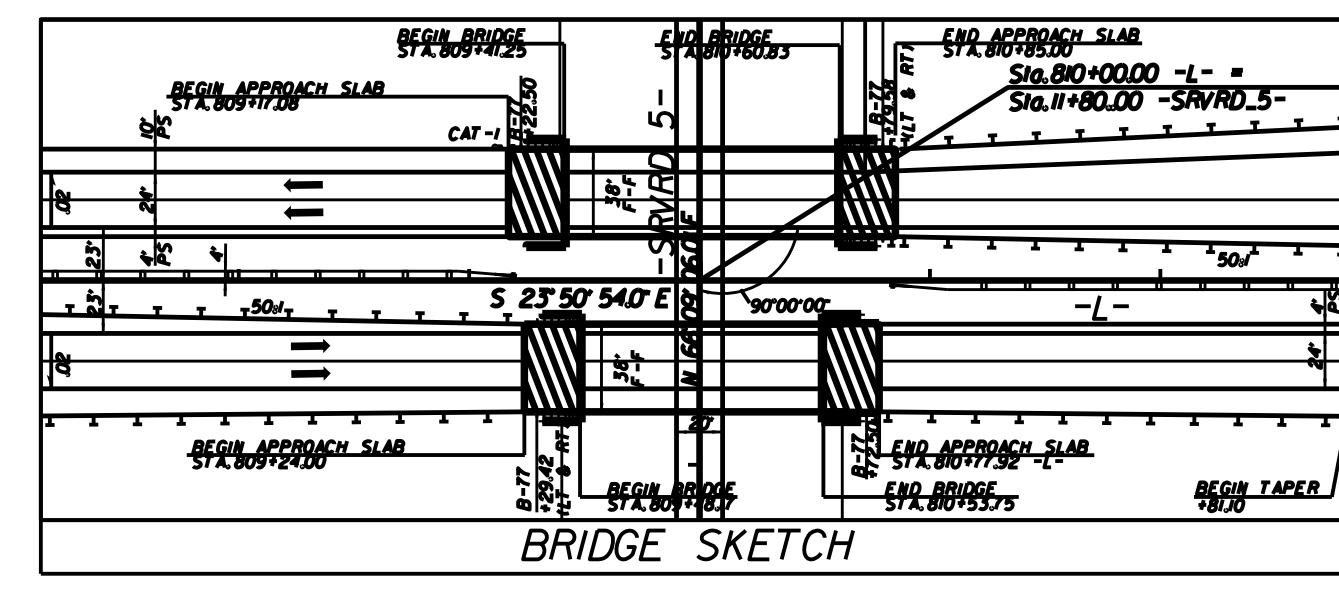
Michael Baker
INTERNATIONAL

Michael Baker Engineering, Inc.
8000 Regency Parkway, Suite 600
Cary, NC 27518
919-463-5488



UTILITIES BY OTHERS

ALL PROPOSED UTILITY WORK SHOWN ON THIS SHEET WILL BE DONE BY OTHERS. NO PAYMENT WILL BE MADE TO THE CONTRACTOR FOR PROPOSED UTILITY WORK SHOWN ON THIS SHEET.



MATCH SHEET NO. 16 STA. 10+50 -SRVRD 5A-

MATCH SHEET NO. 16 STA. 807+00 -L-

MATCH SHEET NO. UO-9 STA. 820+50 -L-

MATCH SHEET NO. UO-9 STA. 15+88.00 -RAMPC-

MATCH SHEET NO. UO-9 STA. 21+00.00 -SRVRD 4-

Michael Baker INTERNATIONAL
 Michael Baker Engineering, Inc.
 8000 Regency Parkway, Suite 600
 Cary, NC 27518
 919-463-5488

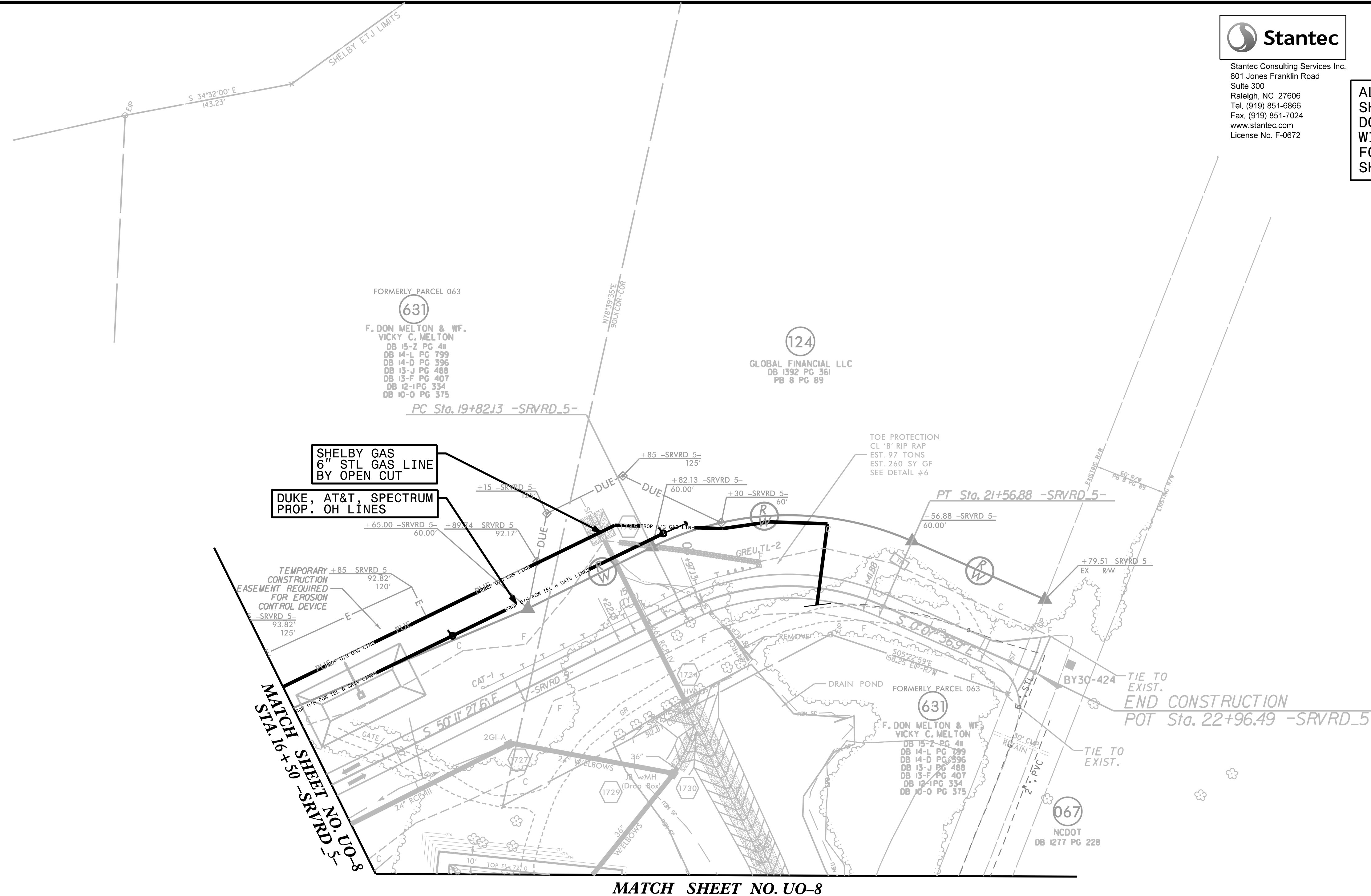
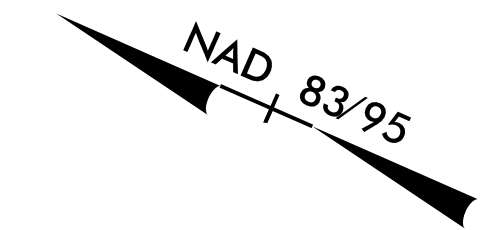
PROJECT REFERENCE NO.	SHEET NO.
R-2707D	UO-8A
THIS SHEET CORRESPONDS TO RDY-17A	



Stantec Consulting Services Inc.
801 Jones Franklin Road
Suite 300
Raleigh, NC 27606
Tel. (919) 851-6866
Fax. (919) 851-7024
www.stantec.com
License No. F-0672

UTILITIES BY OTHERS

ALL PROPOSED UTILITY WORK SHOWN ON THIS SHEET WILL BE DONE BY OTHERS. NO PAYMENT WILL BE MADE TO THE CONTRACTOR FOR PROPOSED UTILITY WORK SHOWN ON THIS SHEET.



MATCH SHEET NO. UO-8
STA. 16+50 -SRVRD 5-

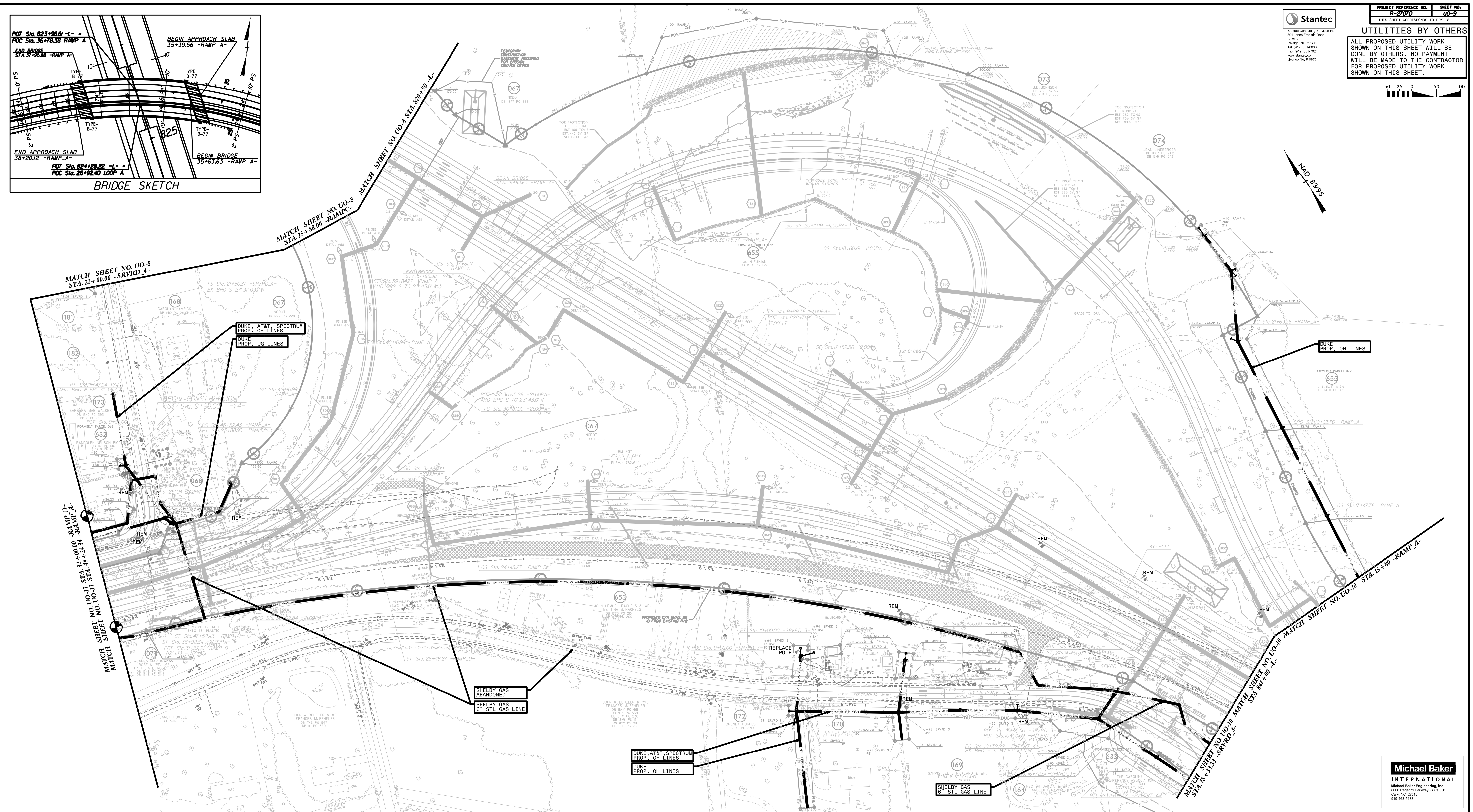
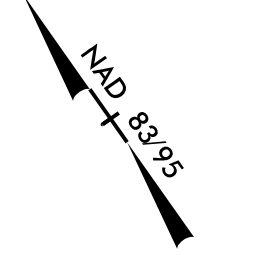
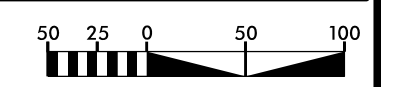
MATCH SHEET NO. UO-8

Michael Baker

INTERNATIONAL

Michael Baker Engineering, Inc.
8000 Regency Parkway, Suite 600
Cary, NC 27518
919-463-5488

UTILITIES BY OTHERS
 ALL PROPOSED UTILITY WORK SHOWN ON THIS SHEET WILL BE DONE BY OTHERS. NO PAYMENT WILL BE MADE TO THE CONTRACTOR FOR PROPOSED UTILITY WORK SHOWN ON THIS SHEET.



DUKE AT&T SPECTRUM
 PROP. OH LINES
 DUKE
 PROP. US LINES

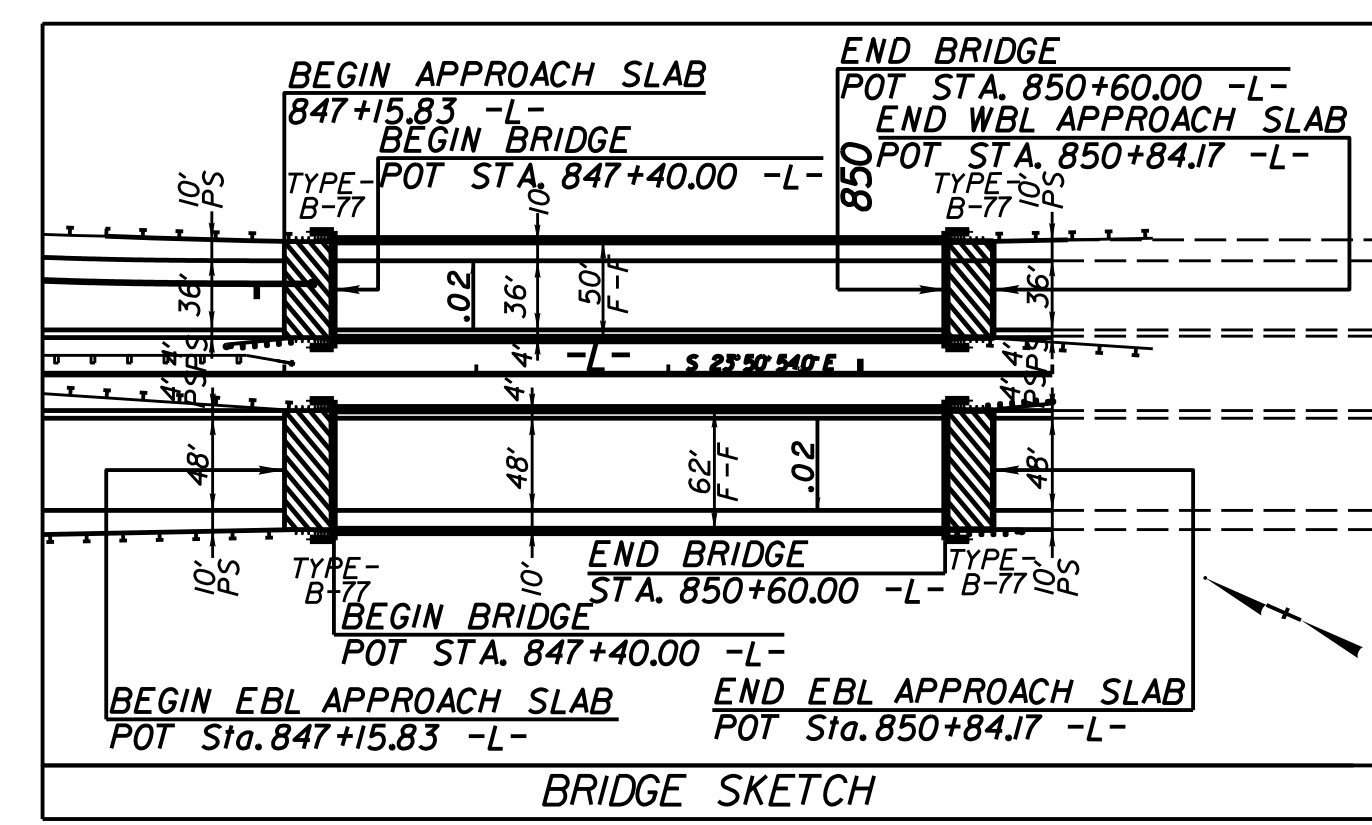
SHELBY GAS
 ABANDONED
 SHELBY GAS
 6" STL GAS LINE

SHELBY GAS
 6" STL GAS LINE

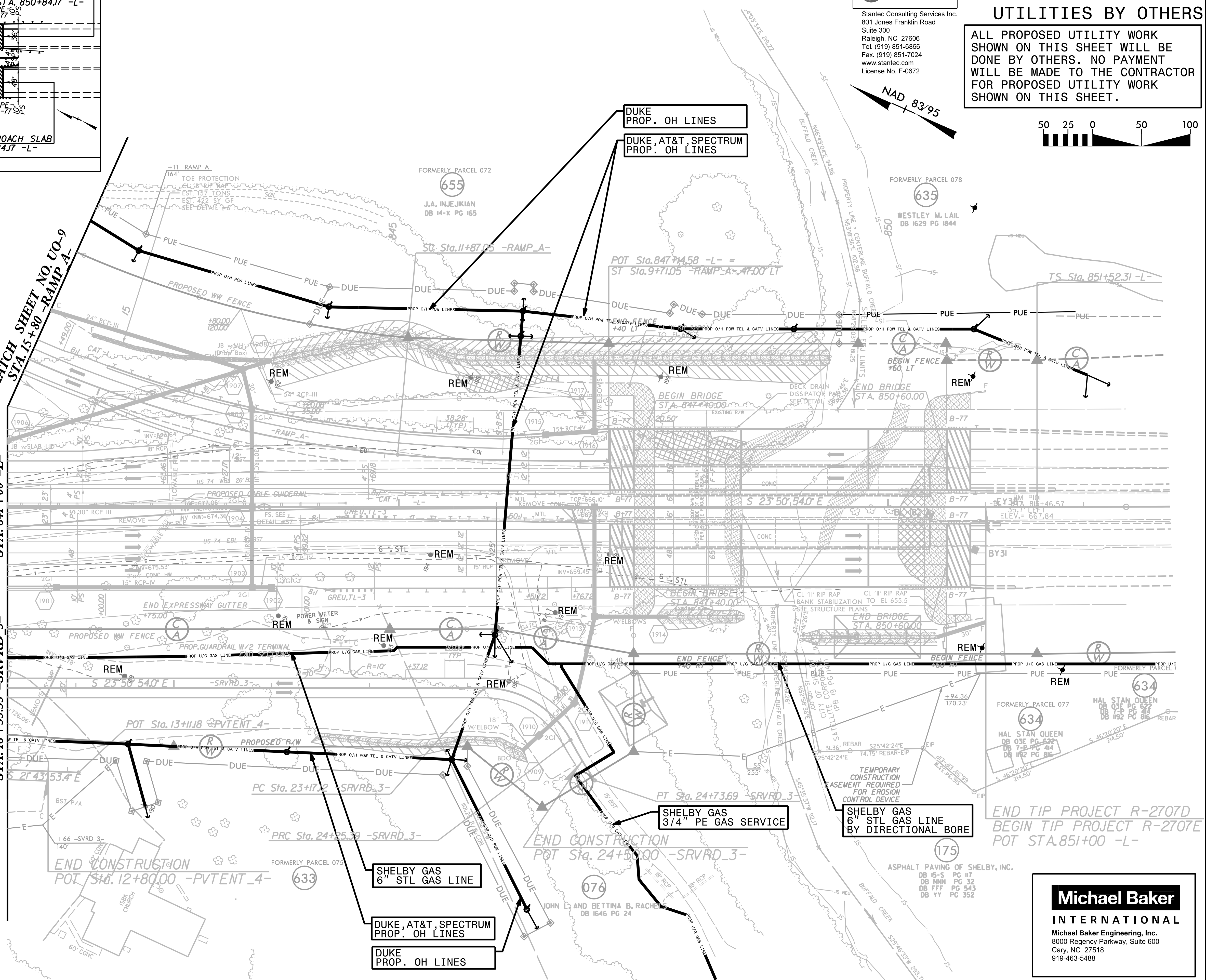


UTILITIES BY OTHERS

ALL PROPOSED UTILITY WORK SHOWN ON THIS SHEET WILL BE DONE BY OTHERS. NO PAYMENT WILL BE MADE TO THE CONTRACTOR FOR PROPOSED UTILITY WORK SHOWN ON THIS SHEET.



MATCH SHEET NO. UO-9 STA. 15+80 -RAMP_A-
 MATCH SHEET NO. UO-9 STA. 841+00 -L-
 MATCH SHEET NO. UO-9 STA. 18+33.33 -SRVRD_3-



END TIP PROJECT R-2707D
 BEGIN TIP PROJECT R-2707E
 POT Sta. 851+00 -L-

Michael Baker INTERNATIONAL
 Michael Baker Engineering, Inc.
 8000 Regency Parkway, Suite 600
 Cary, NC 27518
 919-463-5488

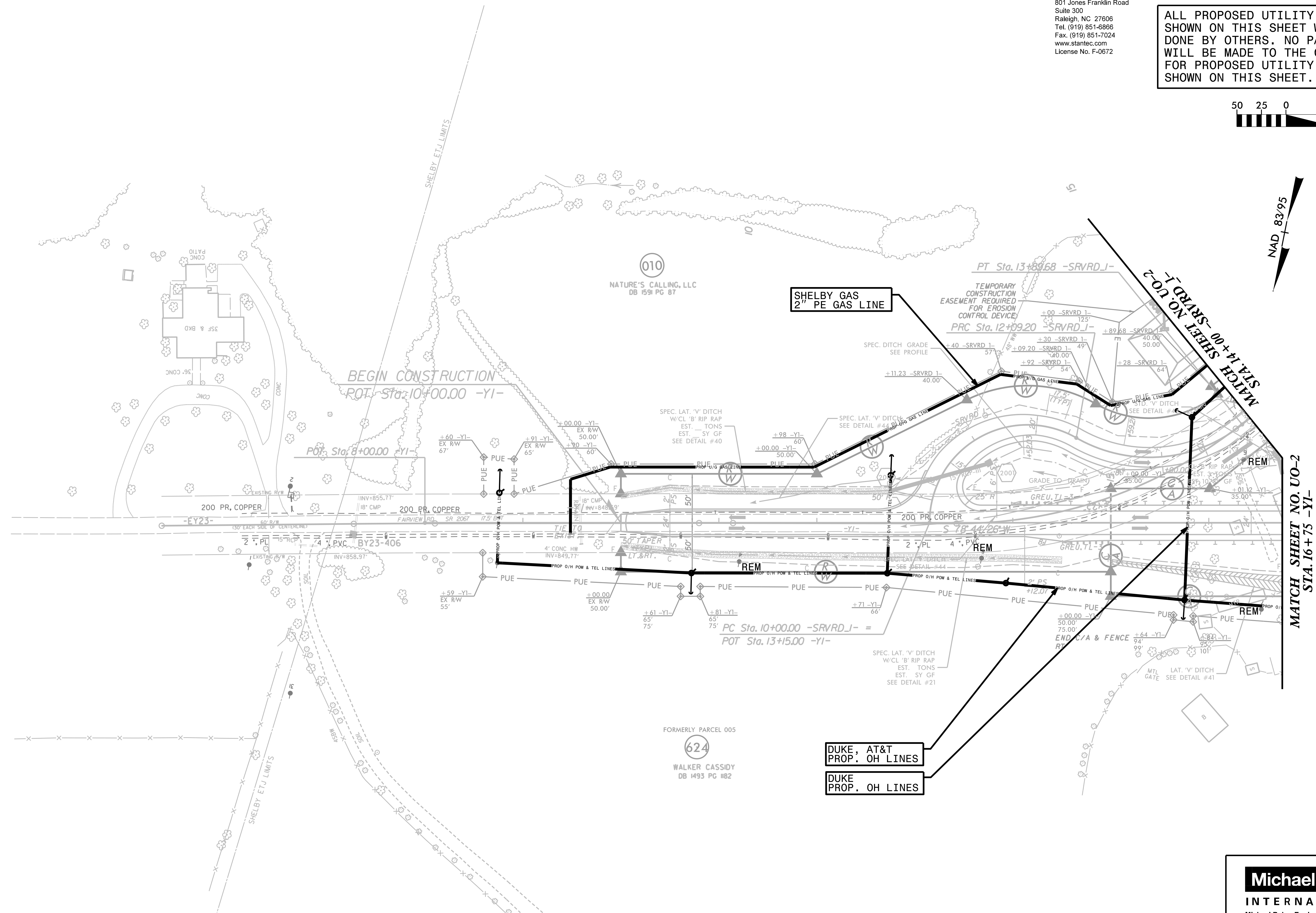
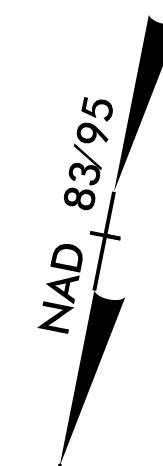


Stantec Consulting Services Inc.
801 Jones Franklin Road
Suite 300
Raleigh, NC 27606
Tel. (919) 851-6886
Fax. (919) 851-7024
www.stantec.com
License No. F-0672

PROJECT REFERENCE NO.	SHEET NO.
R-2707D	U0-11
THIS SHEET CORRESPONDS TO RDY-20	

UTILITIES BY OTHERS

ALL PROPOSED UTILITY WORK SHOWN ON THIS SHEET WILL BE DONE BY OTHERS. NO PAYMENT WILL BE MADE TO THE CONTRACTOR FOR PROPOSED UTILITY WORK SHOWN ON THIS SHEET.



SHELBY GAS
2" PE GAS LINE

DUKE, AT&T
PROP. OH LINES

DUKE
PROP. OH LINES

Michael Baker
INTERNATIONAL
Michael Baker Engineering, Inc.
8000 Regency Parkway, Suite 600
Cary, NC 27518
919-463-5488



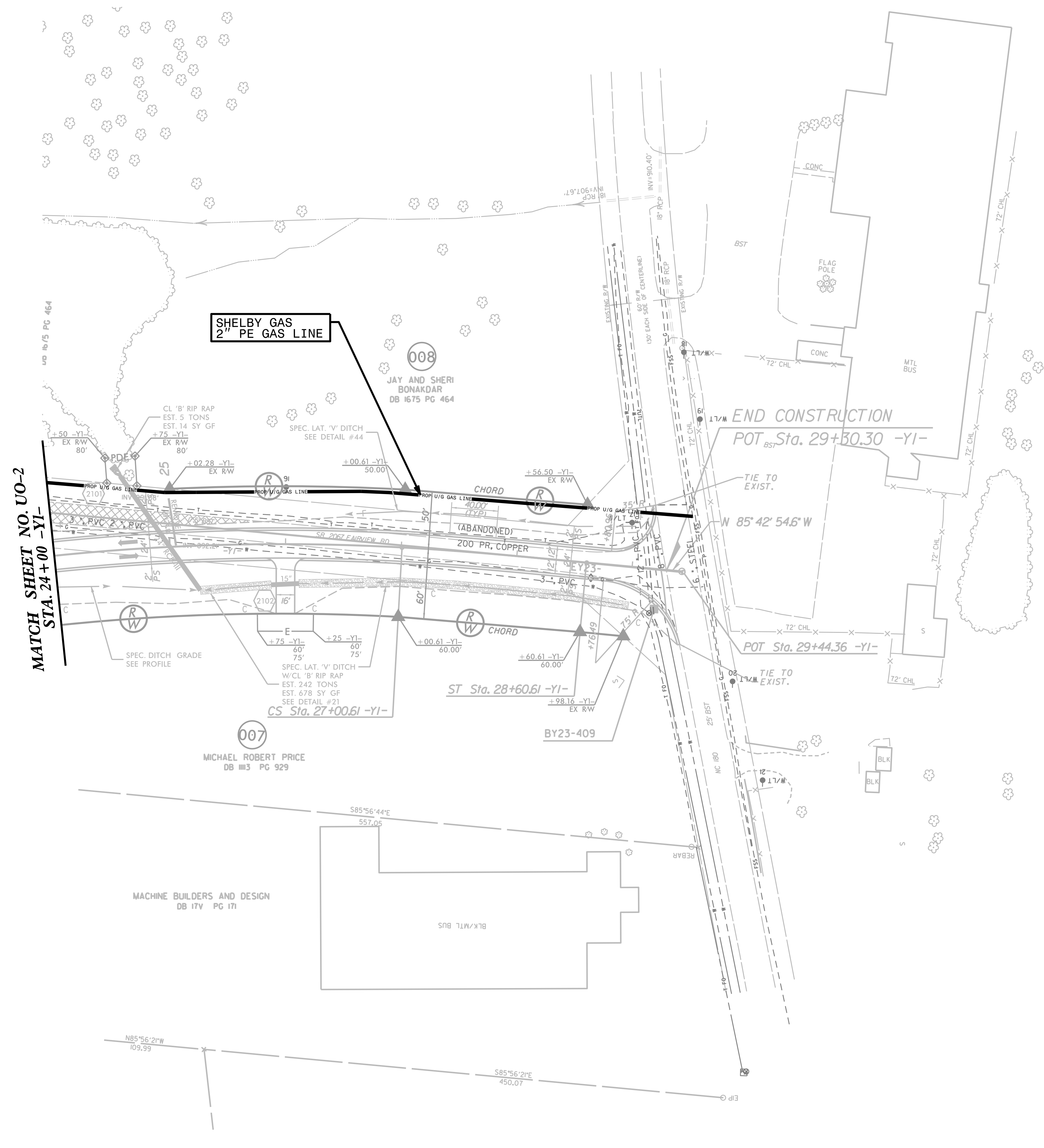
Stantec Consulting Services Inc.
 801 Jones Franklin Road
 Suite 300
 Raleigh, NC 27606
 Tel. (919) 851-6886
 Fax. (919) 851-7024
 www.stantec.com
 License No. F-0672

UTILITIES BY OTHERS

ALL PROPOSED UTILITY WORK SHOWN ON THIS SHEET WILL BE DONE BY OTHERS. NO PAYMENT WILL BE MADE TO THE CONTRACTOR FOR PROPOSED UTILITY WORK SHOWN ON THIS SHEET.



NAD 83/95



MATCH SHEET NO. UO-2
 STA. 24+00 -Y1-

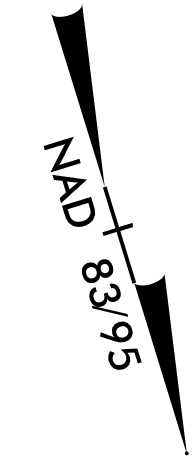
Michael Baker INTERNATIONAL
 Michael Baker Engineering, Inc.
 8000 Regency Parkway, Suite 600
 Cary, NC 27518
 919-463-5488

UTILITIES BY OTHERS

ALL PROPOSED UTILITY WORK SHOWN ON THIS SHEET WILL BE DONE BY OTHERS. NO PAYMENT WILL BE MADE TO THE CONTRACTOR FOR PROPOSED UTILITY WORK SHOWN ON THIS SHEET.



Stantec Consulting Services Inc.
801 Jones Franklin Road
Suite 300
Raleigh, NC 27606
Tel. (919) 851-6866
Fax. (919) 851-7024
www.stantec.com
License No. F-0672



SPECTRUM
TIE INTO EXIST. PED

RST GLOBAL, CONTERRA
PROP. UG CABLES
RST GLOBAL
TIE INTO EXIST. HH
CONTERRA
TIE INTO HH AT
LIGHT OAK CIRCLE

RST GLOBAL, SEGRA, CONTERRA
PROP. UG CABLES

SPECTRUM
PROP. UG CABLE

AT&T
PROP. UG CABLE

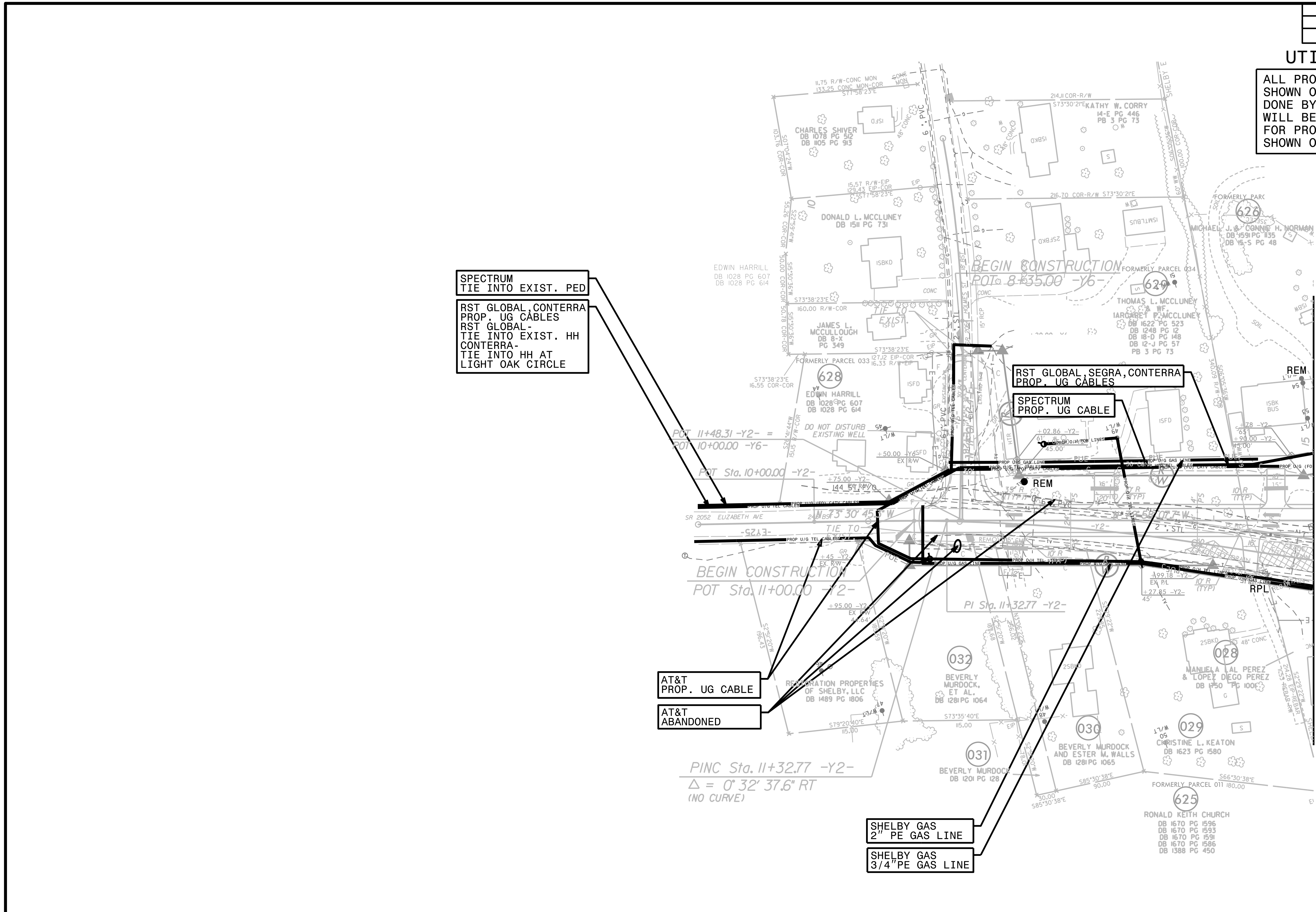
AT&T
ABANDONED

SHELBY GAS
2" PE GAS LINE

SHELBY GAS
3/4" PE GAS LINE

PINC Sta. 11+32.77 -Y2-
 $\Delta = 0' 32' 37.6" RT$
(NO CURVE)

MATCH SHEET NO. UO-4 STA. 15+00 -Y2-

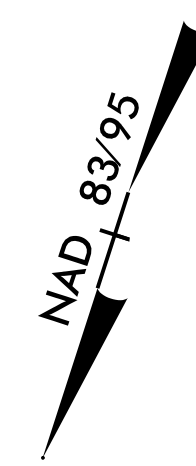


Michael Baker
INTERNATIONAL

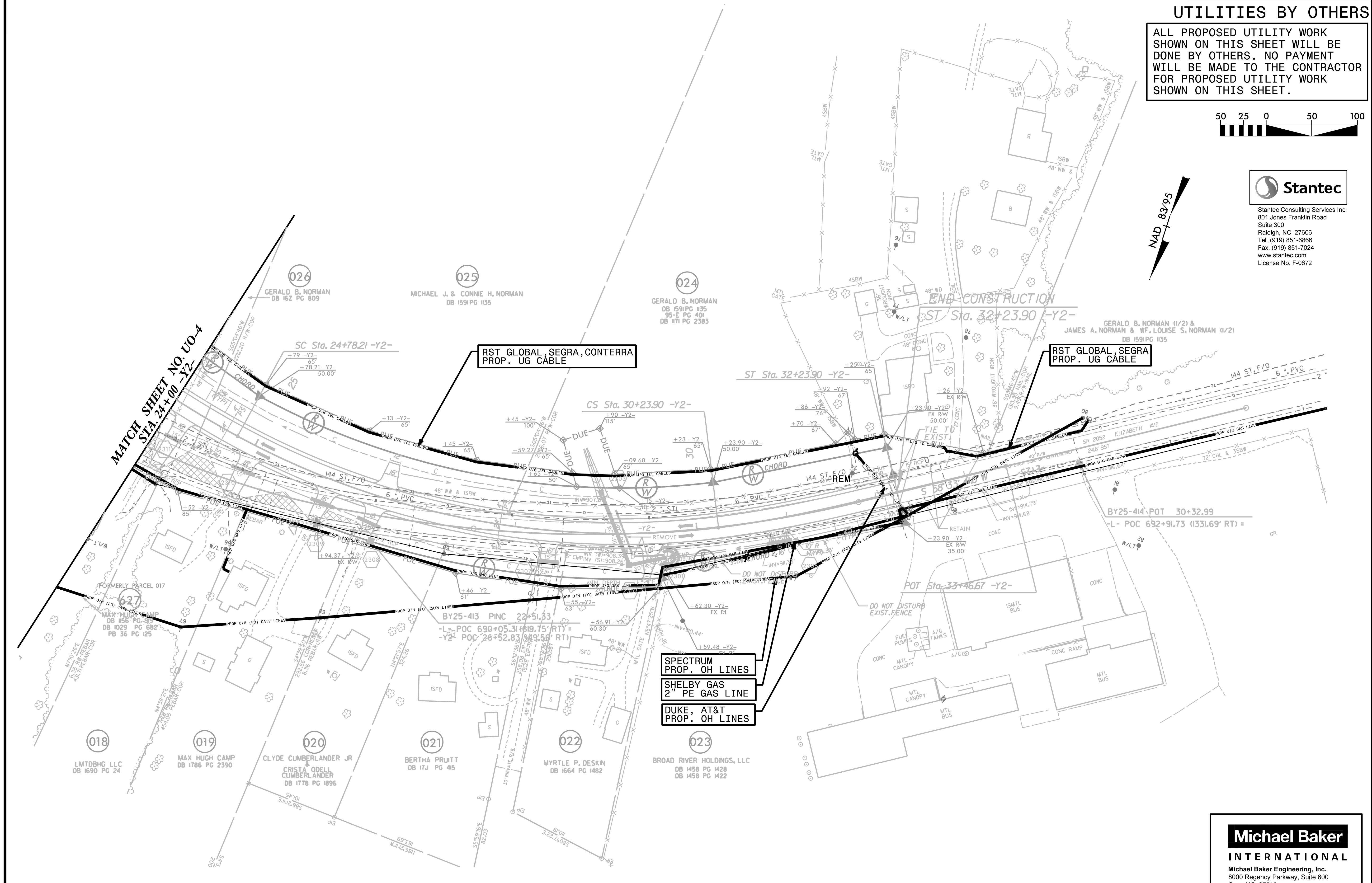
Michael Baker Engineering, Inc.
8000 Regency Parkway, Suite 600
Cary, NC 27518
919-463-5488

UTILITIES BY OTHERS

ALL PROPOSED UTILITY WORK SHOWN ON THIS SHEET WILL BE DONE BY OTHERS. NO PAYMENT WILL BE MADE TO THE CONTRACTOR FOR PROPOSED UTILITY WORK SHOWN ON THIS SHEET.



Stantec Consulting Services Inc.
801 Jones Franklin Road
Suite 300
Raleigh, NC 27606
Tel. (919) 851-6866
Fax. (919) 851-7024
www.stantec.com
License No. F-0672



MATCH SHEET NO. U0-4
STA. 24+00 -Y2-

RST GLOBAL, SEGRA, CONTERRA
PROP. UG CABLE

RST GLOBAL, SEGRA
PROP. UG CABLE

SPECTRUM
PROP. OH LINES
SHELBY GAS
2\"/>

Michael Baker
INTERNATIONAL
Michael Baker Engineering, Inc.
8000 Regency Parkway, Suite 600
Cary, NC 27518
919-463-5488