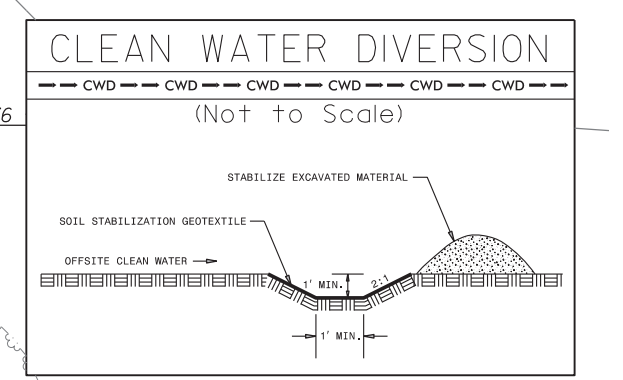
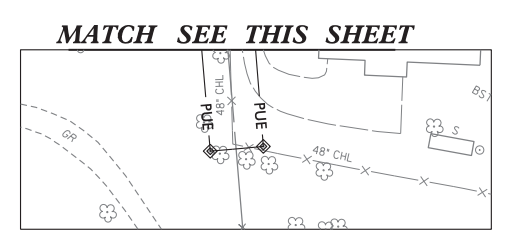
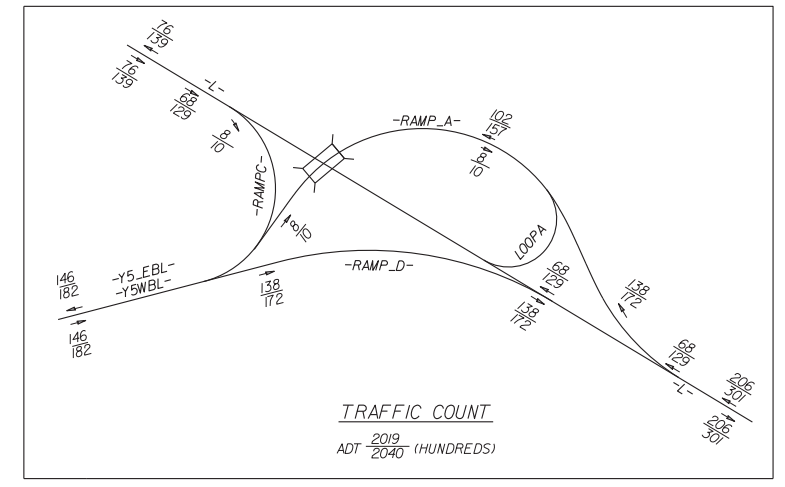


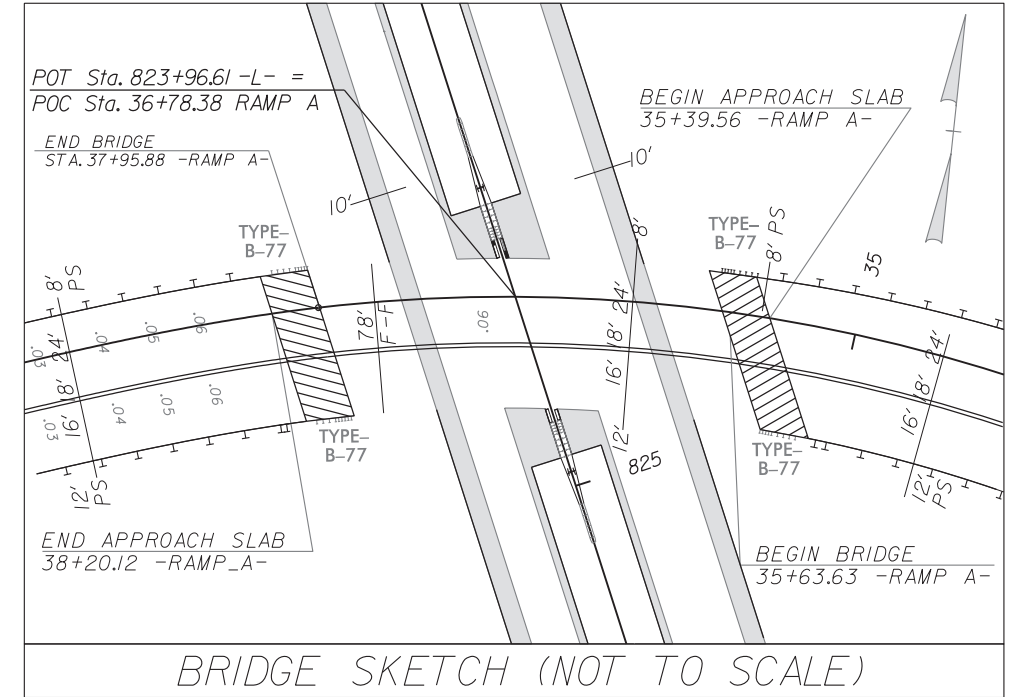
PROJECT REFERENCE NO.	2-2707D	SHEET NO.	EC-S2/CONST/18
ROADWAY DESIGN ENGINEER		HYDRAULICS ENGINEER	

FINAL GRADING EROSION CONTROL FOR CONSTRUCTION SHEET 18

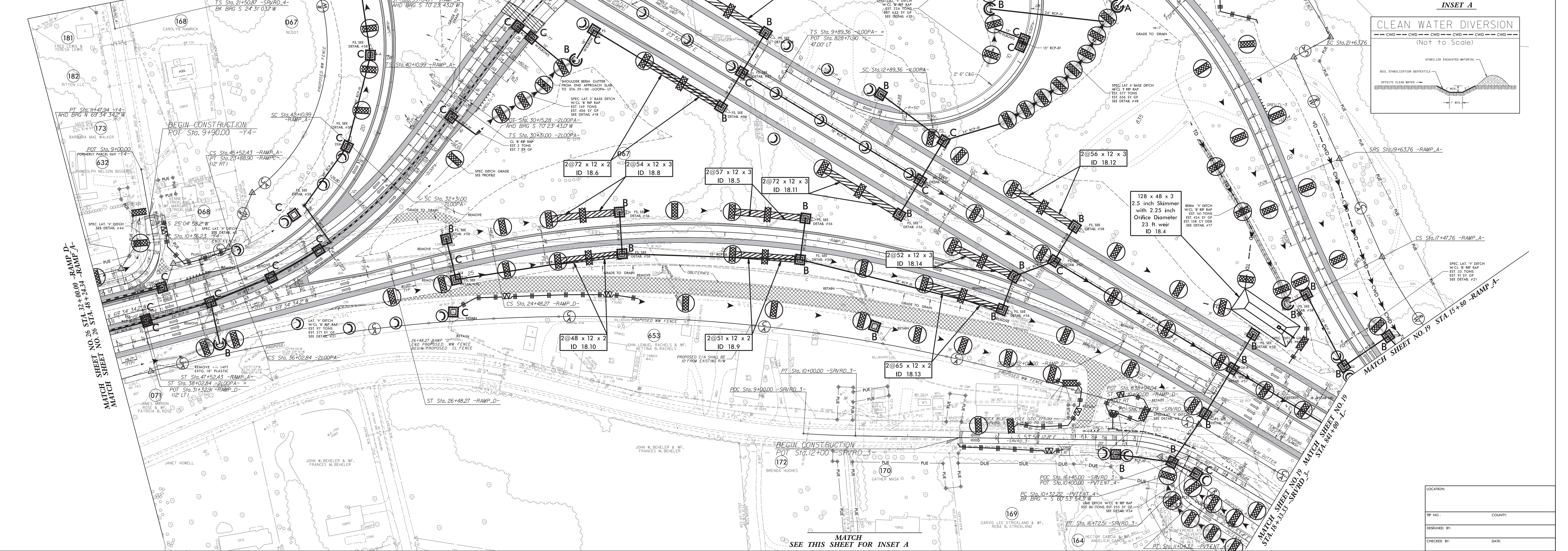


LOCATION:	
TR. NO.:	COUNTY:
DESIGNED BY:	
CHECKED BY:	DATE:

Place Matting for Erosion Control on Slope as Work Allows.
Sta. 30+00 to Sta. 33+50 -RAMP A- RT
Sta. 23+50 to Sta. 35+50 -RAMP A- RT
Sta. 15+00 to Sta. 16+50 -SRVRD_3- LT



MATCH SHEET NO. 17 STA. 21+00.00 -SRVRD_4-



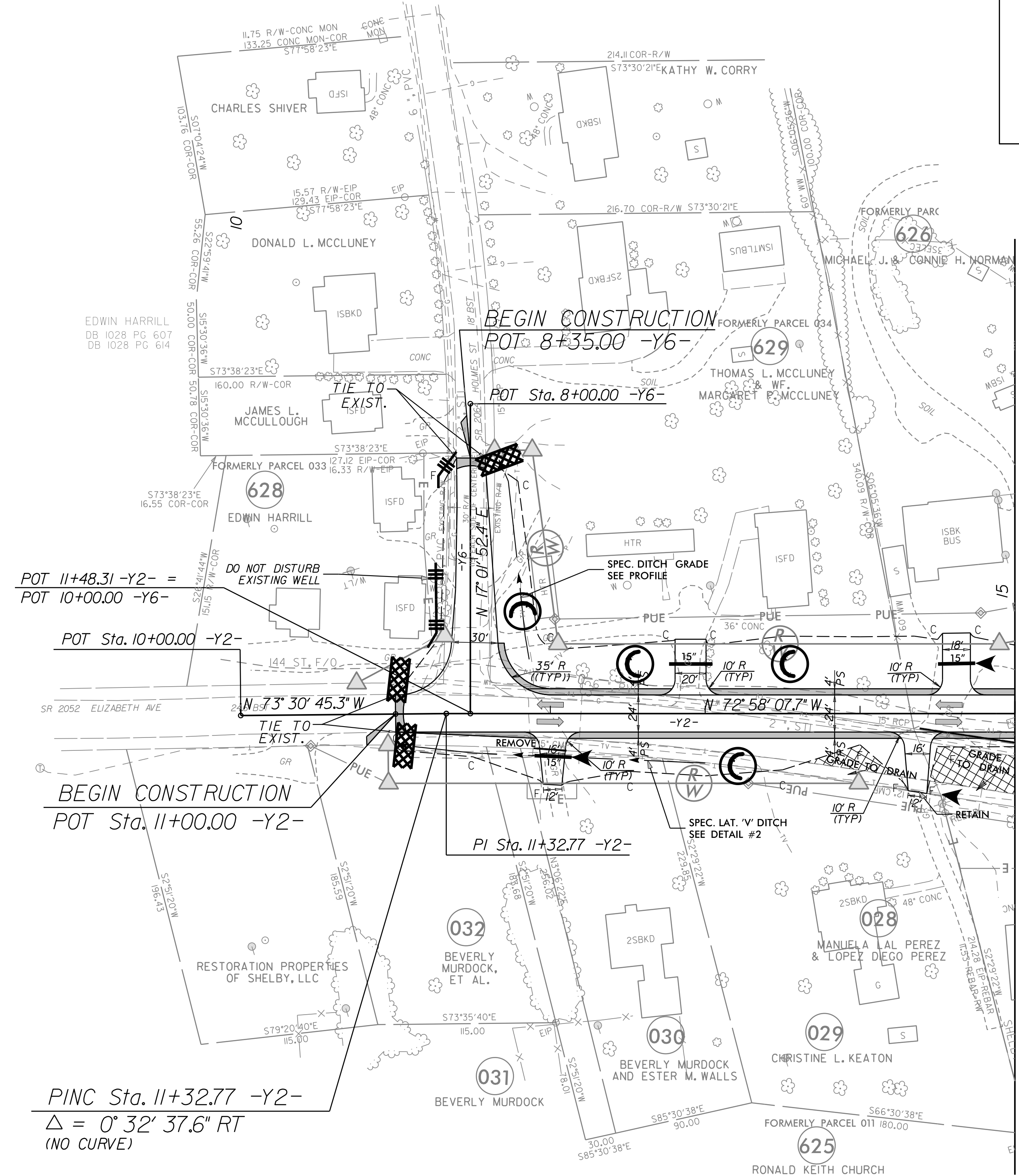
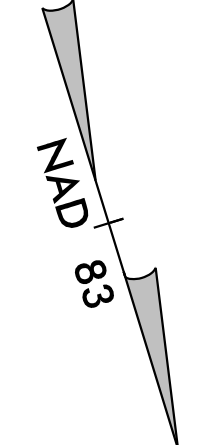
MATCH SEE THIS SHEET FOR INSET A

REVISIONS
 1. 11/15/23
 2. 11/15/23
 3. 11/15/23
 4. 11/15/23
 5. 11/15/23
 6. 11/15/23
 7. 11/15/23
 8. 11/15/23
 9. 11/15/23
 10. 11/15/23
 11. 11/15/23
 12. 11/15/23
 13. 11/15/23
 14. 11/15/23
 15. 11/15/23
 16. 11/15/23
 17. 11/15/23
 18. 11/15/23
 19. 11/15/23
 20. 11/15/23
 21. 11/15/23
 22. 11/15/23
 23. 11/15/23
 24. 11/15/23
 25. 11/15/23
 26. 11/15/23
 27. 11/15/23
 28. 11/15/23
 29. 11/15/23
 30. 11/15/23
 31. 11/15/23
 32. 11/15/23
 33. 11/15/23
 34. 11/15/23
 35. 11/15/23
 36. 11/15/23
 37. 11/15/23
 38. 11/15/23
 39. 11/15/23
 40. 11/15/23
 41. 11/15/23
 42. 11/15/23
 43. 11/15/23
 44. 11/15/23
 45. 11/15/23
 46. 11/15/23
 47. 11/15/23
 48. 11/15/23
 49. 11/15/23
 50. 11/15/23
 51. 11/15/23
 52. 11/15/23
 53. 11/15/23
 54. 11/15/23
 55. 11/15/23
 56. 11/15/23
 57. 11/15/23
 58. 11/15/23
 59. 11/15/23
 60. 11/15/23
 61. 11/15/23
 62. 11/15/23
 63. 11/15/23
 64. 11/15/23
 65. 11/15/23
 66. 11/15/23
 67. 11/15/23
 68. 11/15/23
 69. 11/15/23
 70. 11/15/23
 71. 11/15/23
 72. 11/15/23
 73. 11/15/23
 74. 11/15/23
 75. 11/15/23
 76. 11/15/23
 77. 11/15/23
 78. 11/15/23
 79. 11/15/23
 80. 11/15/23
 81. 11/15/23
 82. 11/15/23
 83. 11/15/23
 84. 11/15/23
 85. 11/15/23
 86. 11/15/23
 87. 11/15/23
 88. 11/15/23
 89. 11/15/23
 90. 11/15/23
 91. 11/15/23
 92. 11/15/23
 93. 11/15/23
 94. 11/15/23
 95. 11/15/23
 96. 11/15/23
 97. 11/15/23
 98. 11/15/23
 99. 11/15/23
 100. 11/15/23

7/2/99

PROJECT REFERENCE NO.	SHEET NO.
R-2707D	EC-56/CONST.22
RW SHEET NO.	
ROADWAY DESIGN ENGINEER	HYDRAULICS ENGINEER

FINAL GRADING
EROSION CONTROL FOR
CONSTRUCTION SHEET 22

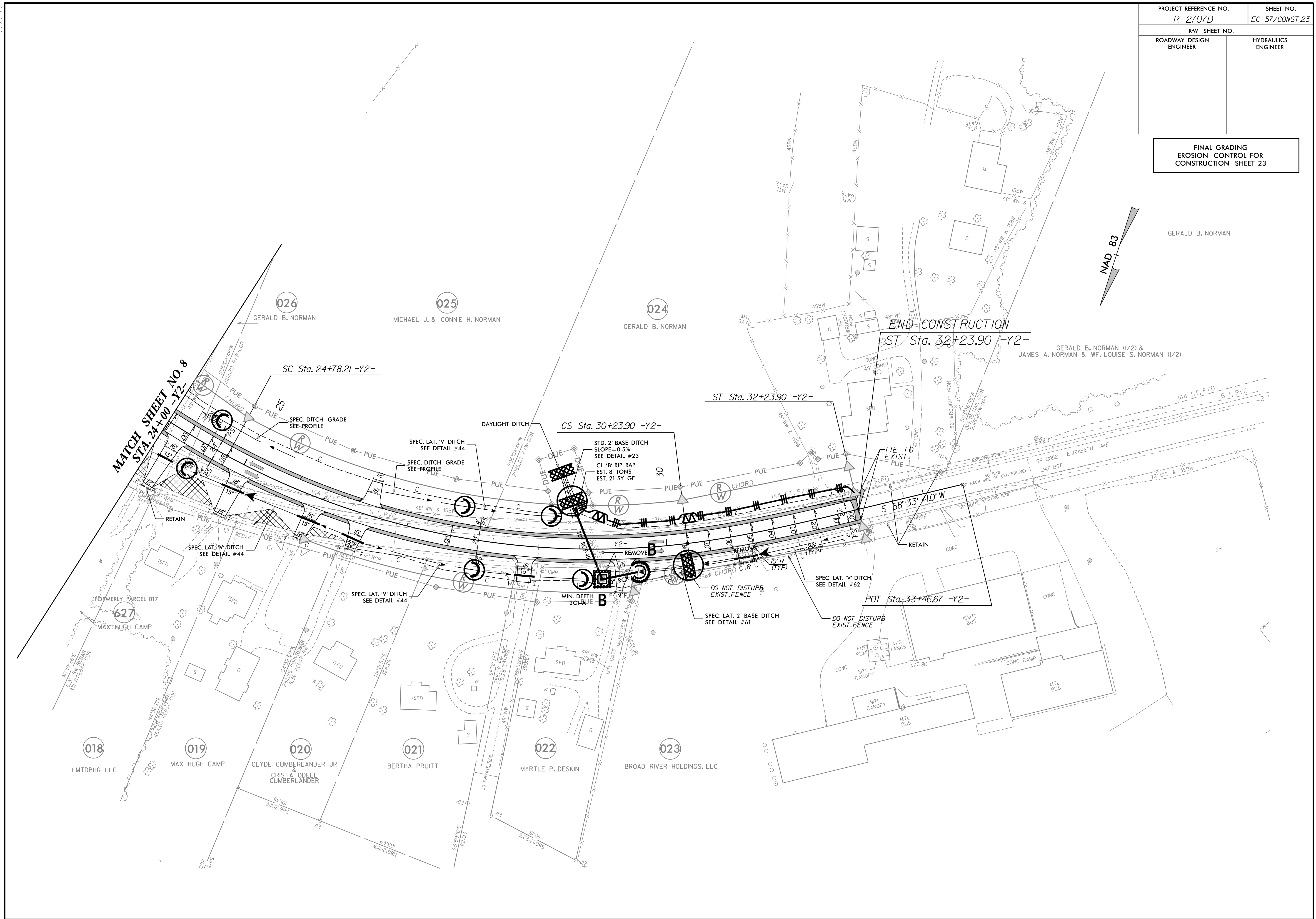


MATCH SHEET NO. 8 STA. 15 + 00 -Y2-

PINC Sta. 11+32.77 -Y2-
Δ = 0° 32' 37.6" RT
(NO CURVE)

PROJECT REFERENCE NO.	SHEET NO.
R-2707D	EC-57/CONST.23
RW SHEET NO.	
ROADWAY DESIGN ENGINEER	HYDRAULICS ENGINEER

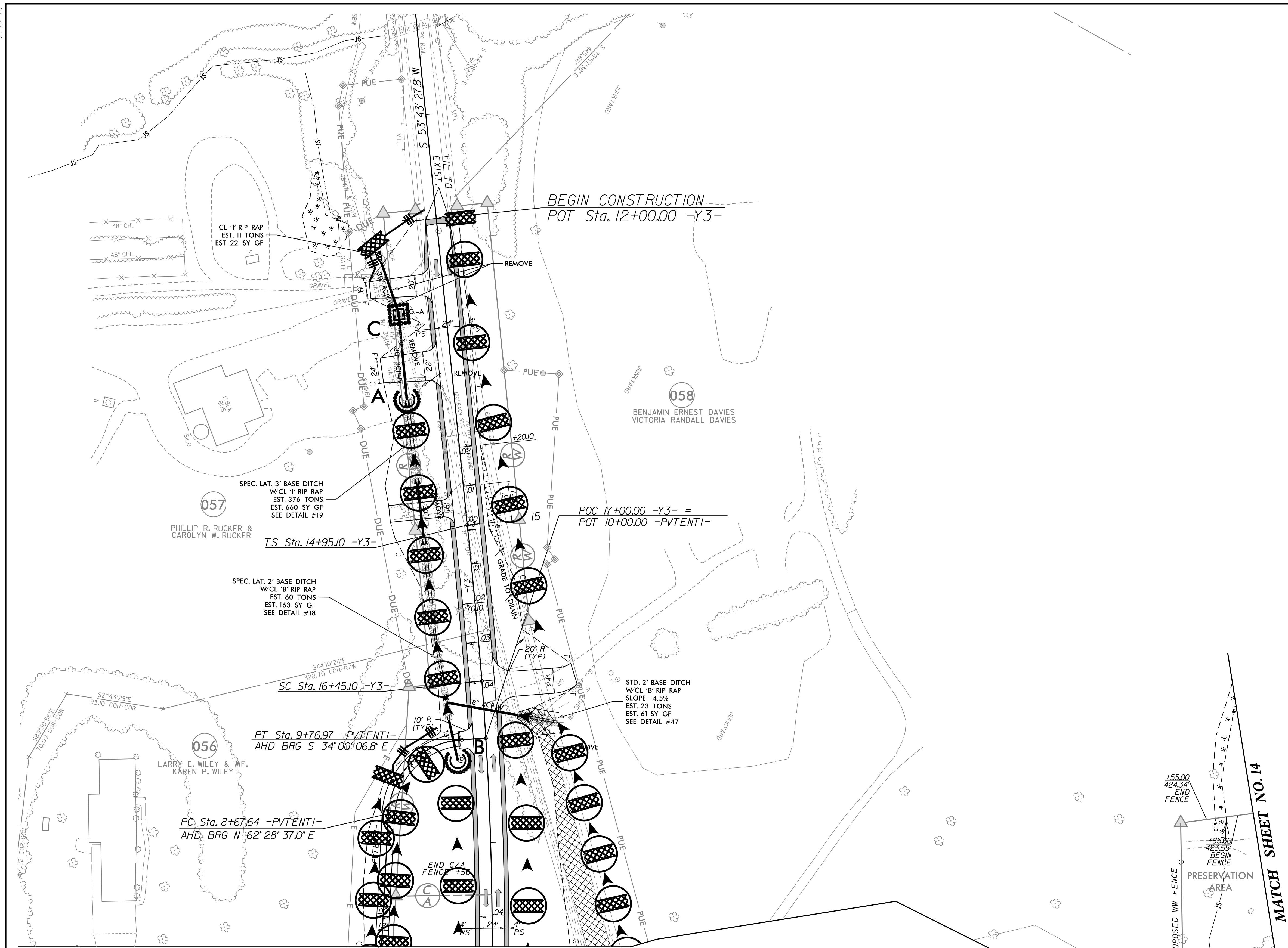
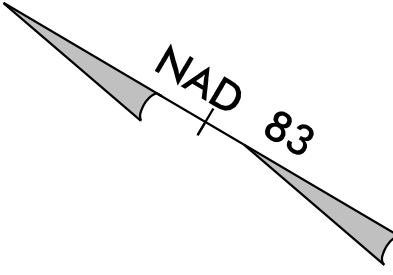
FINAL GRADING
EROSION CONTROL FOR
CONSTRUCTION SHEET 23



7/27/99

PROJECT REFERENCE NO.	SHEET NO.
R-2707D	EC-58/CONST.24
RW SHEET NO.	
ROADWAY DESIGN ENGINEER	HYDRAULICS ENGINEER

FINAL GRADING
EROSION CONTROL FOR
CONSTRUCTION SHEET 24



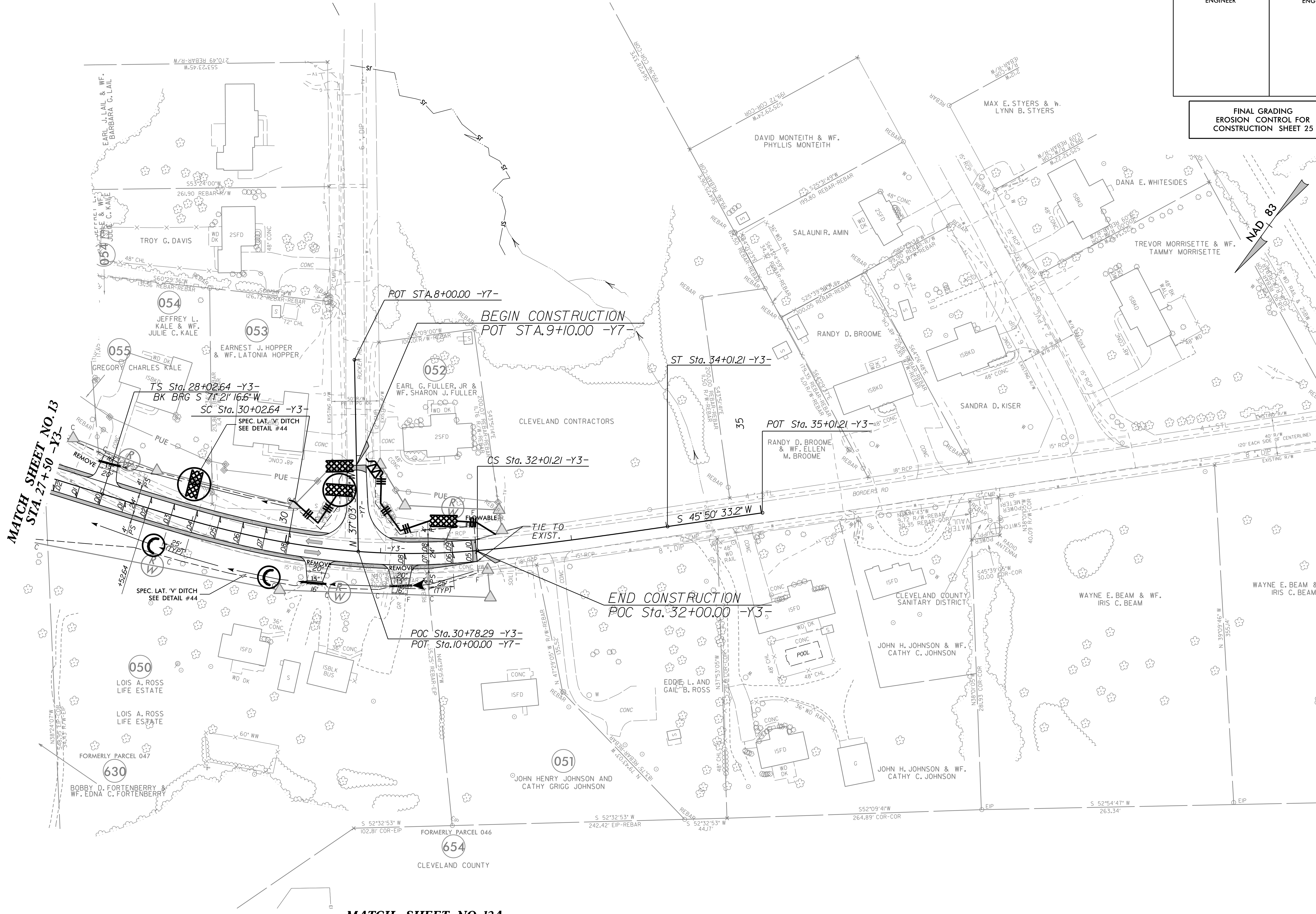
MATCH SHEET NO.13 MATCH SHEET NO.13
STA. 7+39.96 -PVTENTI- STA. 19+00 -Y3-

MATCH SHEET NO.14
MATCH SHEET NO.13

7/22/99

PROJECT REFERENCE NO.	SHEET NO.
R-2707D	EC-59/CONST.25
RW SHEET NO.	
ROADWAY DESIGN ENGINEER	HYDRAULICS ENGINEER

FINAL GRADING
EROSION CONTROL FOR
CONSTRUCTION SHEET 25



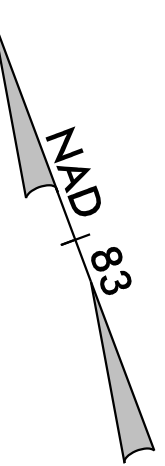
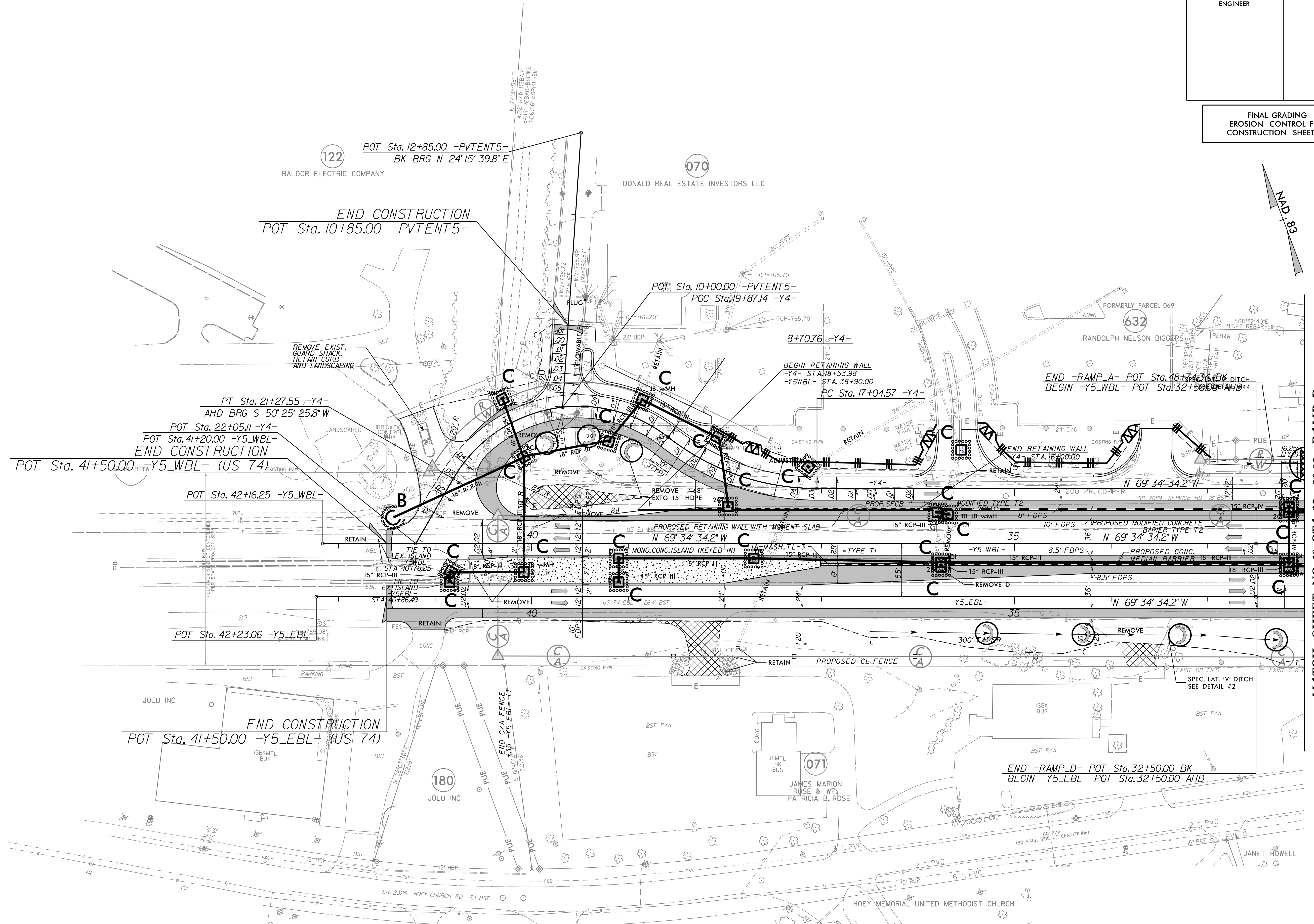
SEE DETAIL # 2
1 1/2 3/4

MATCH SHEET NO. 12A

7/27/99

PROJECT REFERENCE NO.	SHEET NO.
R-2707D	EC-60/CONST.26
RW SHEET NO.	
ROADWAY DESIGN ENGINEER	HYDRAULICS ENGINEER

FINAL GRADING
EROSION CONTROL FOR
CONSTRUCTION SHEET 26



MATCH SHEET NO. 18 STA. 32+00.00 -RAMP D-
MATCH SHEET NO. 18 STA. 48+24.34 -RAMP A-
MATCH SHEET NO. 18 STA. 12+00.00 -Y4-

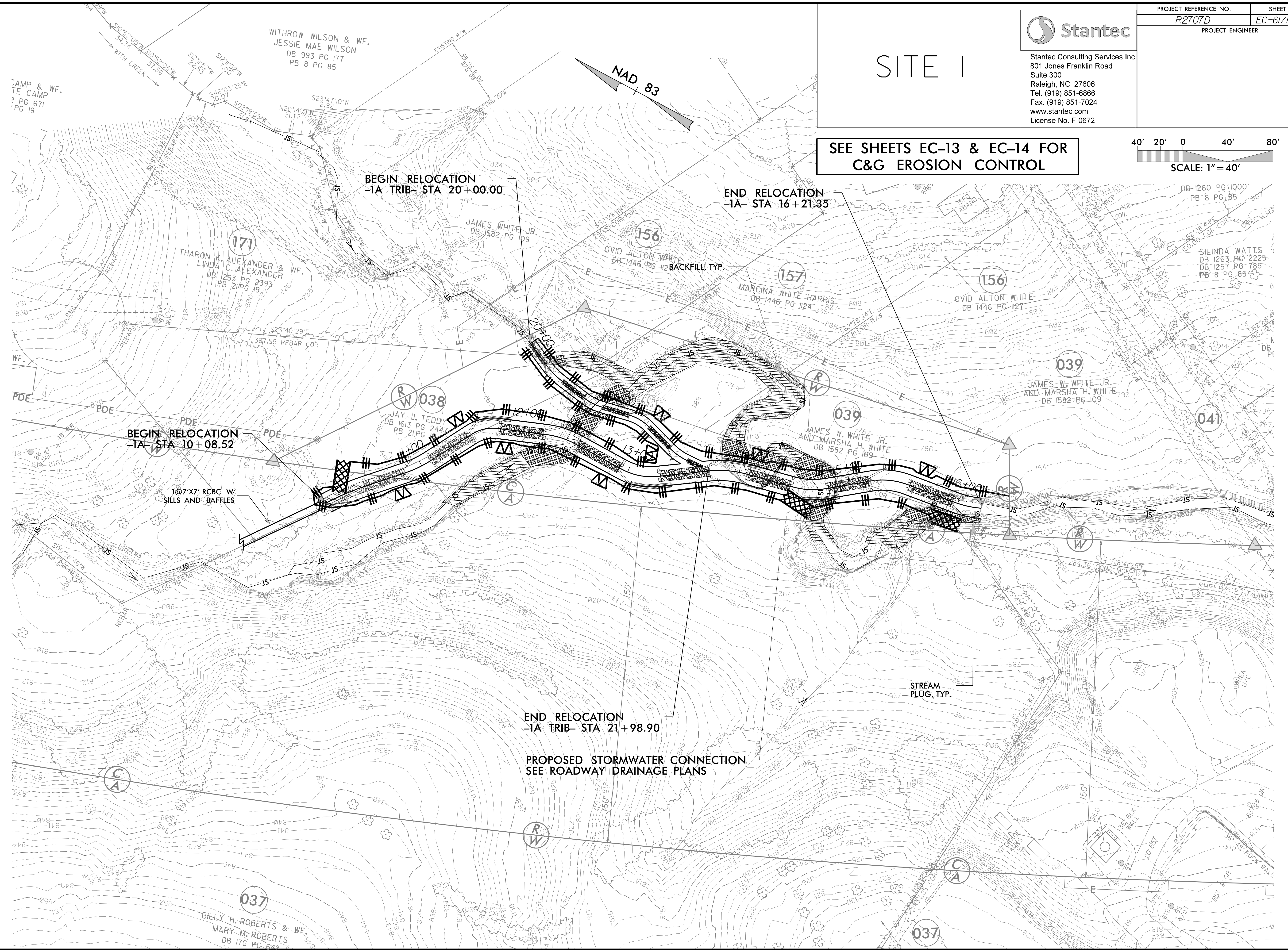
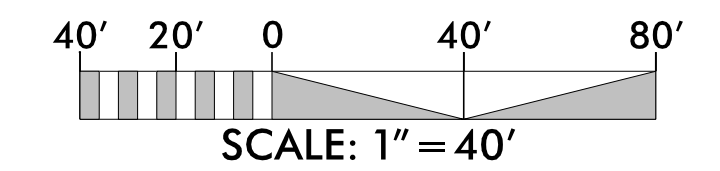
7/27/99



Stantec Consulting Services Inc.
 801 Jones Franklin Road
 Suite 300
 Raleigh, NC 27606
 Tel. (919) 851-6866
 Fax. (919) 851-7024
 www.stantec.com
 License No. F-0672

SITE I

SEE SHEETS EC-13 & EC-14 FOR
 C&G EROSION CONTROL



REVISIONS

R2707D.ec.dsn_psh_61_NS_04.dgn
 1/14/2023 10:04:00 AM

NATURAL STREAM MITIGATION CONSTRUCTION SEQUENCE

UT TO BUFFALO CREEK TRIB 4

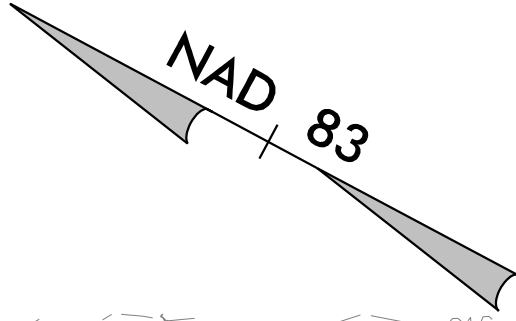
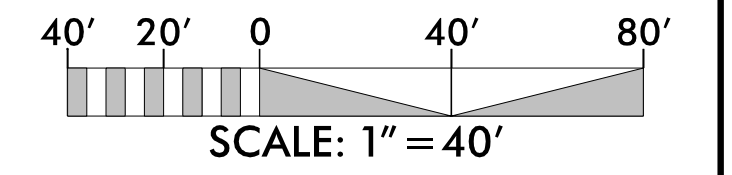
SITE I



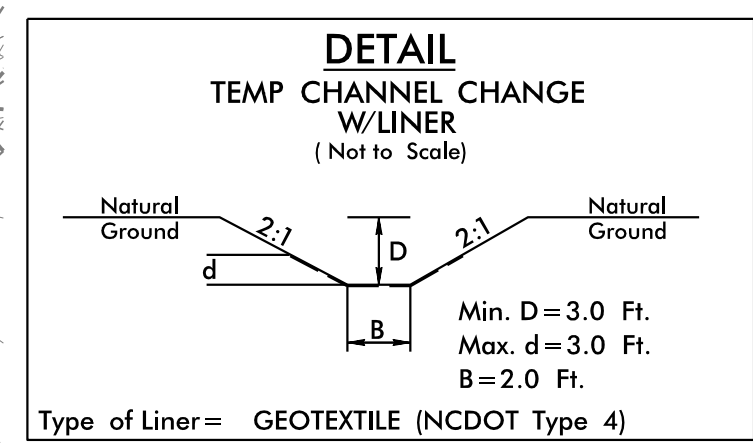
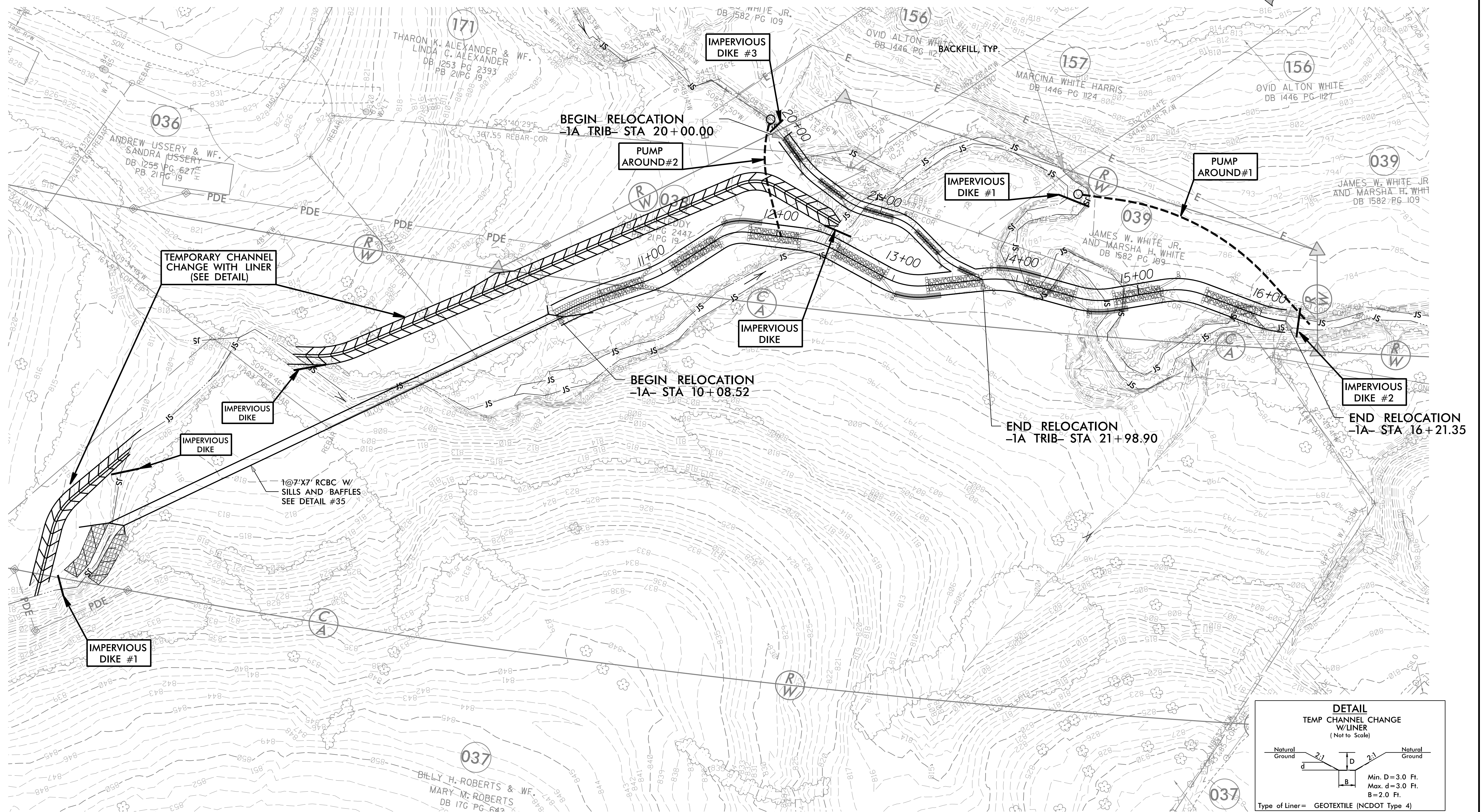
Stantec Consulting Services Inc.
801 Jones Franklin Road
Suite 300
Raleigh, NC 27606
Tel. (919) 851-6866
Fax. (919) 851-7024
www.stantec.com
License No. F-0672

PROJECT REFERENCE NO. R2707D SHEET NO. EC-61A/NS-04
PROJECT ENGINEER

PHASE	ALIGN.	BEGIN STATION	END STATION	CONSTRUCTION ACTIVITY
1	-1A- -1A TRIB-	10+08.5 21+10	16+21.35 21+98.9	INSTALL PERIMETER EROSION CONTROL MEASURES IN ACCORDANCE WITH THE CLEARING AND GRUBBING EROSION CONTROL PLANS. CONSTRUCT TEMPORARY CHANNEL CHANGE AND 1@7'X7' RCBC IN ACCORDANCE WITH CULVERT PHASING PLAN ON EC-13A. SET UP PUMP AROUND #1, INSTALL IMPERVIOUS DIKE #1, IMPERVIOUS DIKE #2 AND BEGIN PUMP OPERATION. CONSTRUCT MAIN CHANNEL FROM STA. 10+08.52 TO 16+21.35 -1A- AND TRIBUTARY CHANNEL FROM STA. 21+10 TO 21+98.9 -1A TRIB-. EXCAVATE ANY ACCUMULATED SILT AND REMOVE DIKE AT CULVERT INLET, ALLOWING FLOW THROUGH CULVERT AND NEWLY CONSTRUCTED MAIN CHANNEL.
2	-1A-	20+00	21+10	SET UP PUMP AROUND #2, INSTALL IMPERVIOUS DIKE #3 AND BEGIN PUMP OPERATION. COMPLETE CONSTRUCTION OF PROPOSED TRIBUTARY CHANNEL FROM 20+00 TO 21+10 -1A TRIB-. EXCAVATE ANY ACCUMULATED SILT BEHIND DIKE AND REMOVE DIKE AND PUMP OPERATION ALLOWING FLOW THROUGH TRIBUTARY.



REVISIONS



R2707D.dgn, psh, 6/14/2003, 10:04 AM, Phasing.dgn

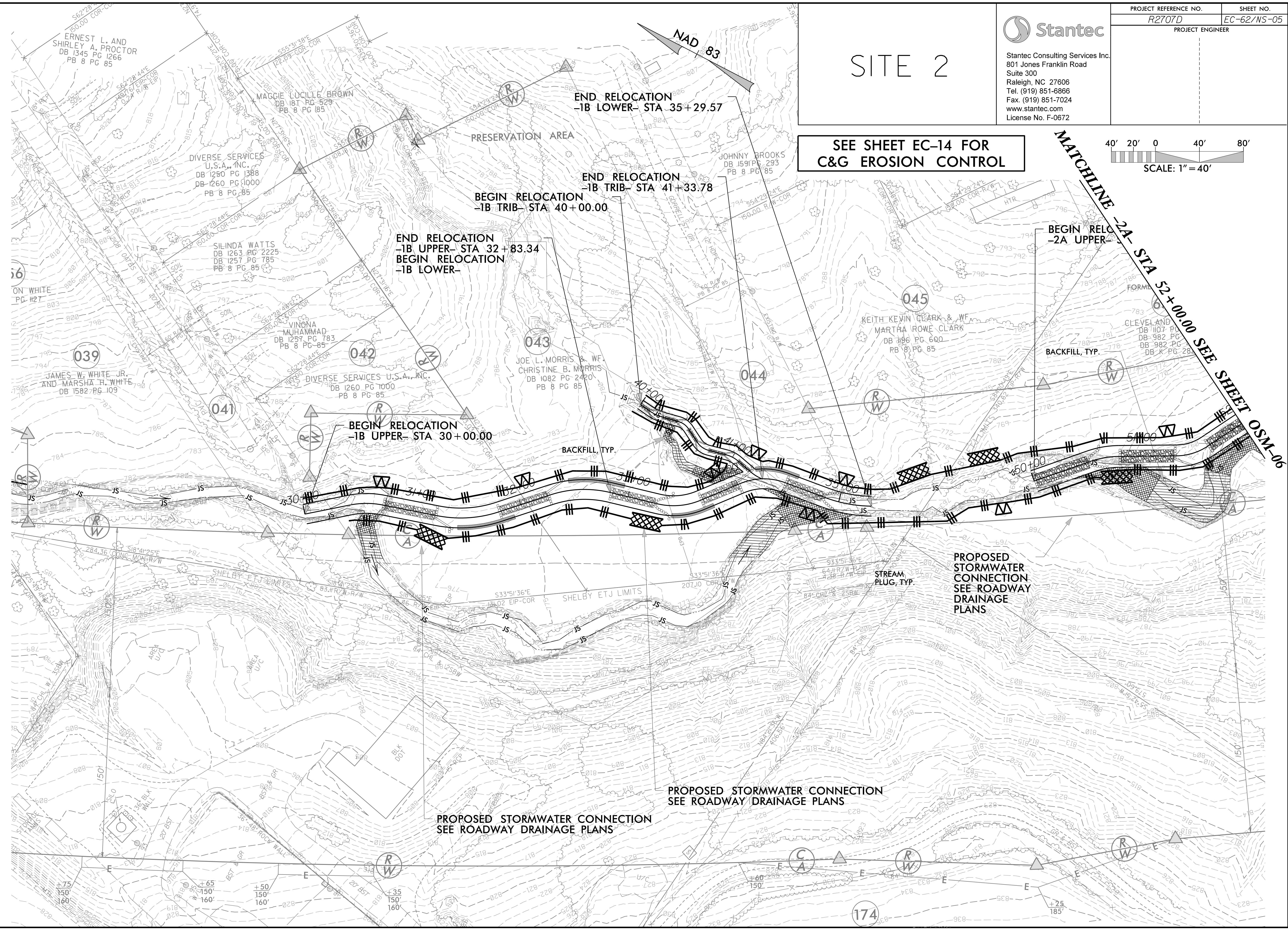
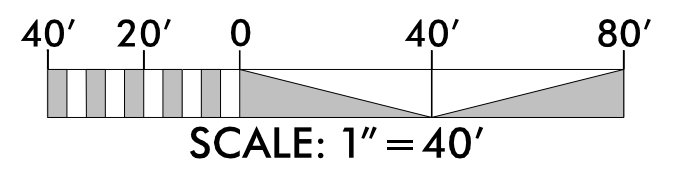


Stantec Consulting Services Inc.
 801 Jones Franklin Road
 Suite 300
 Raleigh, NC 27606
 Tel. (919) 851-6866
 Fax. (919) 851-7024
 www.stantec.com
 License No. F-0672

PROJECT REFERENCE NO.	SHEET NO.
R2707D	EC-62/NS-05
PROJECT ENGINEER	

SITE 2

SEE SHEET EC-14 FOR
 C&G EROSION CONTROL



REVISIONS

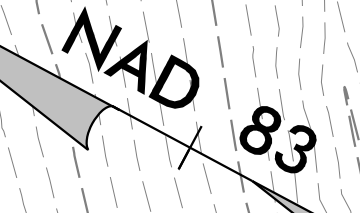
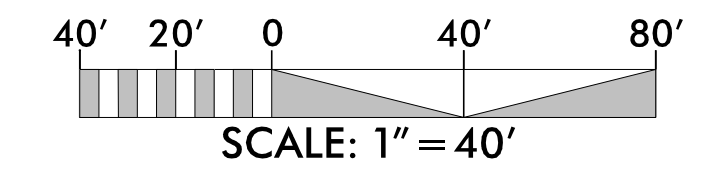
R2707D.ec.dsn, psh, 62, NS-05.dgn
 1/14/2023



Stantec Consulting Services Inc.
 801 Jones Franklin Road
 Suite 300
 Raleigh, NC 27606
 Tel. (919) 851-6866
 Fax. (919) 851-7024
 www.stantec.com
 License No. F-0672

SITE 3

**SEE SHEETS EC-14 & EC-15 FOR
 C&G EROSION CONTROL**



MATCHLINE -2A- STA 52+00.00 SEE SHEET OSM-05

RELOCATION STA 50+00.00

END RELOCATION -2A UPPER- STA 53+38.09
BEGIN RELOCATION -2A LOWER-

END RELOCATION -2A LOWER- STA 57+41.00

END RELOCATION -2C- STA 64+59.64

BACKFILL, TYP.

END RELOCATION -2B- STA 63+23.20

BEGIN RELOCATION -2C-

STREAM PLUG, TYP.
 2 @ 8'X8' RCBC W/SILLS

BEGIN RELOCATION -2B- STA 60+06.29

**PROPOSED STORMWATER CONNECTION
 SEE ROADWAY DRAINAGE PLANS**

REVISIONS

NATURAL STREAM MITIGATION CONSTRUCTION SEQUENCE

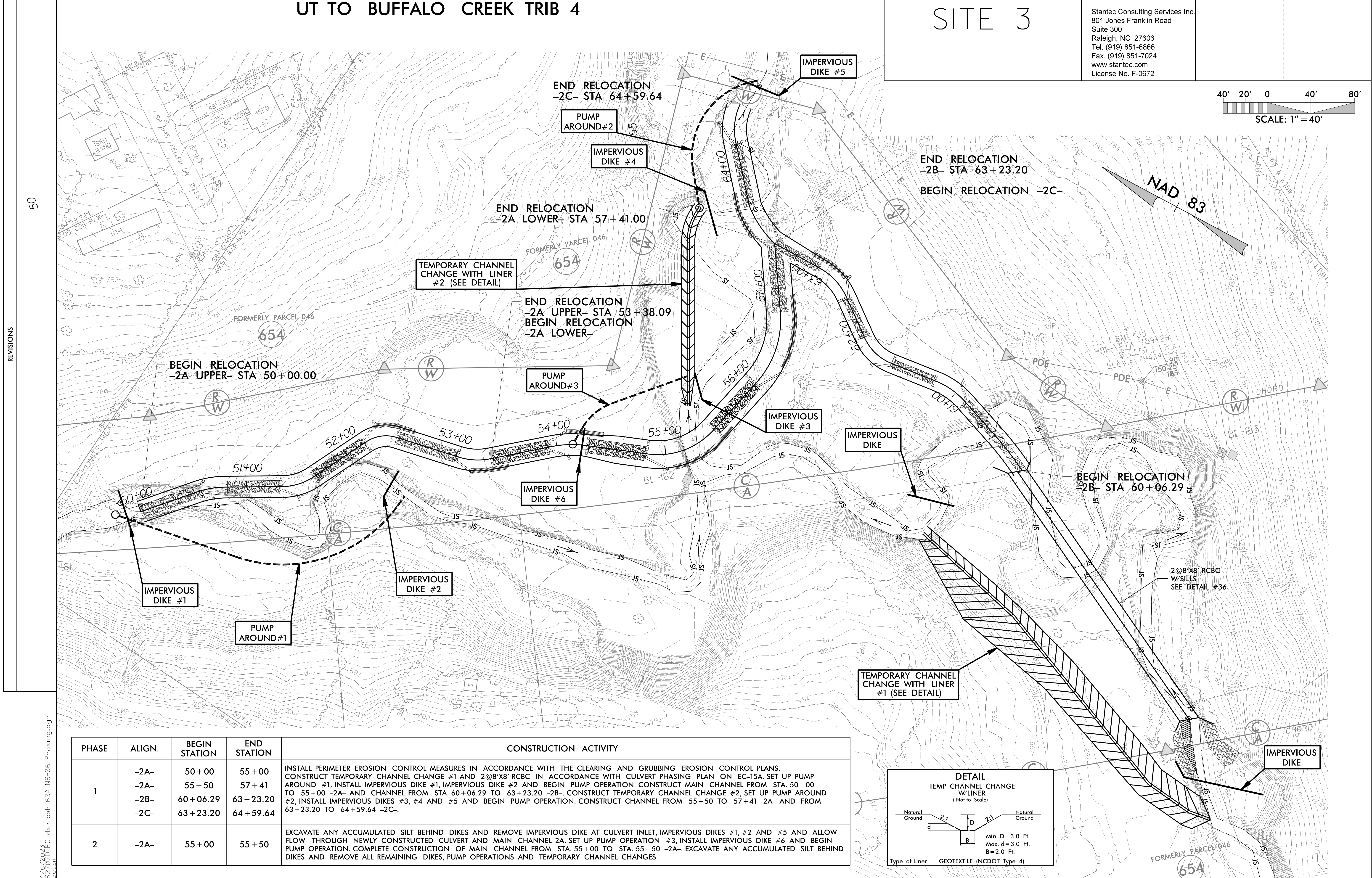
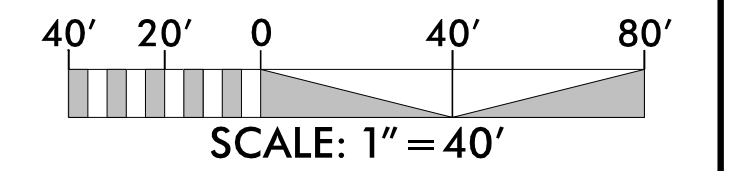
UT TO BUFFALO CREEK TRIB 4

SITE 3

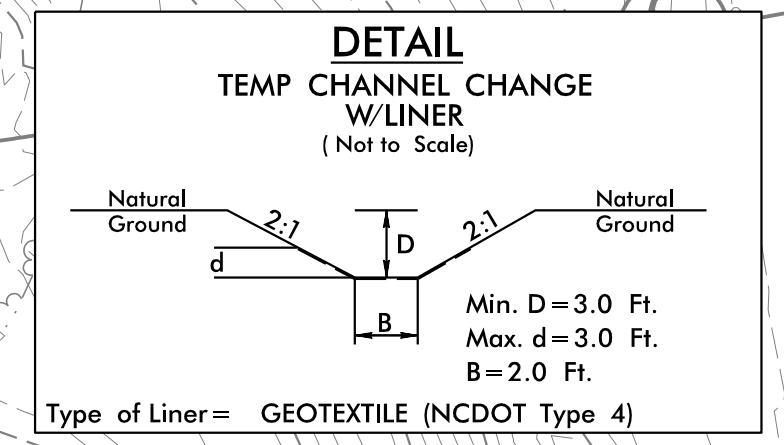


Stantec Consulting Services Inc.
801 Jones Franklin Road
Suite 300
Raleigh, NC 27606
Tel. (919) 851-6866
Fax. (919) 851-7024
www.stantec.com
License No. F-0672

PROJECT REFERENCE NO. R2707D
SHEET NO. EC-63A/NS-06
PROJECT ENGINEER



PHASE	ALIGN.	BEGIN STATION	END STATION	CONSTRUCTION ACTIVITY
1	-2A-	50+00	55+00	INSTALL PERIMETER EROSION CONTROL MEASURES IN ACCORDANCE WITH THE CLEARING AND GRUBBING EROSION CONTROL PLANS. CONSTRUCT TEMPORARY CHANNEL CHANGE #1 AND 2@8'X8' RCBC IN ACCORDANCE WITH CULVERT PHASING PLAN ON EC-15A. SET UP PUMP AROUND #1, INSTALL IMPERVIOUS DIKE #1, IMPERVIOUS DIKE #2 AND BEGIN PUMP OPERATION. CONSTRUCT MAIN CHANNEL FROM STA. 50+00 TO 55+00 -2A- AND CHANNEL FROM STA. 60+06.29 TO 63+23.20 -2B-. CONSTRUCT TEMPORARY CHANNEL CHANGE #2, SET UP PUMP AROUND #2, INSTALL IMPERVIOUS DIKES #3, #4 AND #5 AND BEGIN PUMP OPERATION. CONSTRUCT CHANNEL FROM 55+50 TO 57+41 -2A- AND FROM 63+23.20 TO 64+59.64 -2C-.
	-2A-	55+50	57+41	
	-2B-	60+06.29	63+23.20	
	-2C-	63+23.20	64+59.64	
2	-2A-	55+00	55+50	EXCAVATE ANY ACCUMULATED SILT BEHIND DIKES AND REMOVE IMPERVIOUS DIKE AT CULVERT INLET, IMPERVIOUS DIKES #1, #2 AND #5 AND ALLOW FLOW THROUGH NEWLY CONSTRUCTED CULVERT AND MAIN CHANNEL 2A. SET UP PUMP OPERATION #3, INSTALL IMPERVIOUS DIKE #6 AND BEGIN PUMP OPERATION. COMPLETE CONSTRUCTION OF MAIN CHANNEL FROM STA. 55+00 TO STA. 55+50 -2A-. EXCAVATE ANY ACCUMULATED SILT BEHIND DIKES AND REMOVE ALL REMAINING DIKES, PUMP OPERATIONS AND TEMPORARY CHANNEL CHANGES.



50

REVISIONS

A:\2020\2020\EC.dsn_psh_63A_NS-06_Phasing.dgn