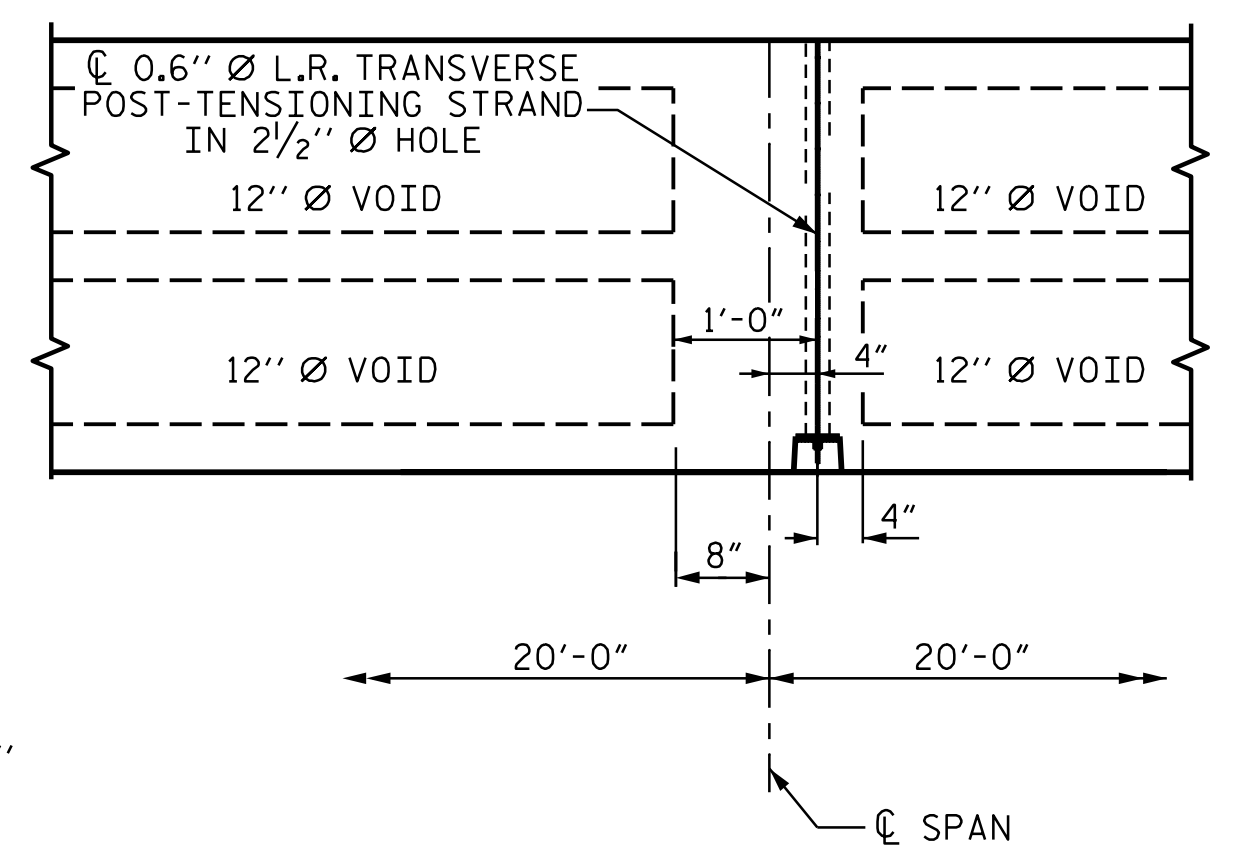
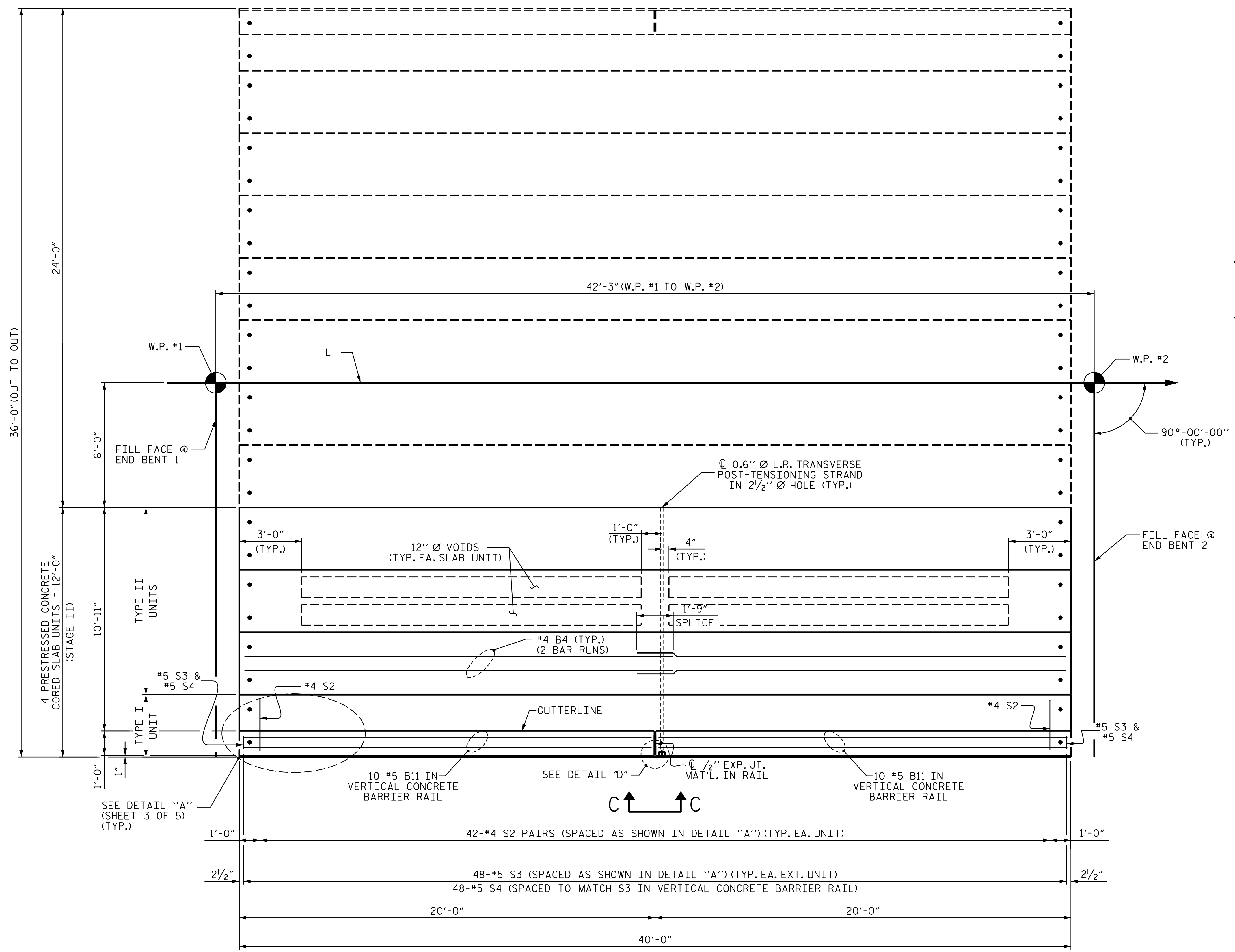


3/24/2023 4:18:30PM -14 B-5893 Bridge 19 over Cub Creek Structures\2.0 Drafting\DNs\401_021_B5893_SMJ_CS4.dgn



DETAIL "D"
 #4 S2 BARS MAY BE SHIFTED AS NECESSARY TO MAINTAIN 1" CLEAR TO GROUTED RECESS AND 2 1/2" Ø TRANSVERSE POST-TENSIONING STRAND HOLES

PLAN OF UNIT - STAGE II

(SEE GROUTED RECESS DETAIL VIEW C-C SEE SHEET 2 OF 5.)

PROJECT NO. B-5893
MITCHELL COUNTY
 STATION: 12+89.50 -L-
 SHEET 4 OF 5

STATE OF NORTH CAROLINA
 DEPARTMENT OF TRANSPORTATION
 RALEIGH

**PLAN OF 40' UNIT
 33'-10" CLEAR ROADWAY
 90° SKEW
 STAGE II**

DOCUMENT NOT CONSIDERED FINAL
 UNLESS ALL SIGNATURES COMPLETED

Seal of **J. WHEATLEY**, Professional Engineer, License No. 036787, dated 3/24/2023.

wsp WSP USA Inc.
 434 FAYETTEVILLE STREET
 SUITE 1500
 RALEIGH, NC 27601
 TEL: 1.919.836.4040
 LICENSE NO. F-0165

DESIGNED BY:	J. WHEATLEY	DATE:	MAR 2023
DRAWN BY:	J. WHEATLEY	DATE:	MAR 2023
CHECKED BY:	T. KIRSCHBAUM	DATE:	MAR 2023
DESIGN ENGINEER OF RECORD:	J. WHEATLEY	DATE:	MAR 2023

REVISIONS				SHEET NO.	
NO.	BY:	DATE:	NO.	BY:	DATE:
1			3		
2			4		

TOTAL SHEETS: 24