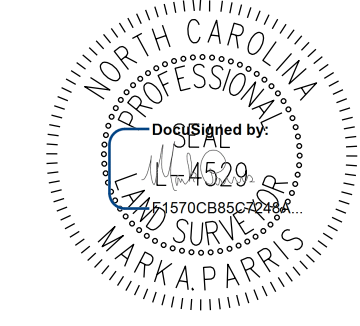


Location and Surveys



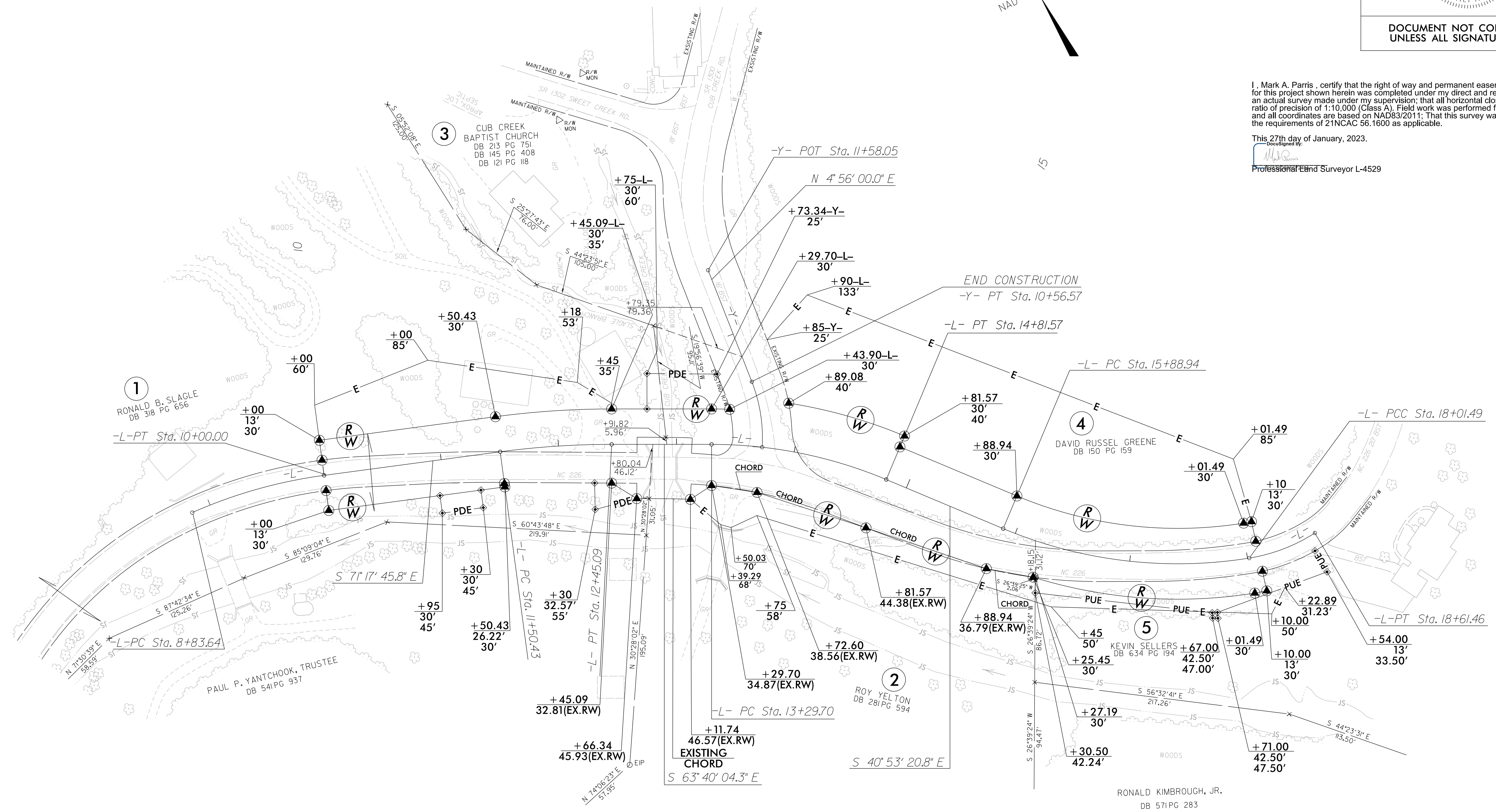
PROJECT SURVEYOR



DOCUMENT NOT CONSIDERED FINAL UNLESS ALL SIGNATURES COMPLETED

-Y-
PI Sta 10+28.74
Δ = 24' 56" 03.1" (LT)
D = 44' 04" 25.2"
L = 56.57'
T = 28.74'
R = 130.00'

-L-
PI Sta 9+42.21 Δ = 16' 17" 27.9" (RT) D = 14' 00" 00.0" L = 116.36' T = 58.58' R = 409.26'
PI Sta 11+97.83 Δ = 7' 37" 41.6" (RT) D = 8' 03" 30.5" L = 94.66' T = 47.40' R = 711.00'
PI Sta 14+06.65 Δ = 22' 46" 43.5" (RT) D = 14' 59" 56.0" L = 151.87' T = 76.95' R = 382.00'
PI Sta 16+98.04 Δ = 31' 52" 46.1" (LT) D = 14' 59" 56.0" L = 212.55' T = 109.10' R = 382.00'
PI Sta 18+31.91 Δ = 23' 41' 57.2" (LT) D = 39' 30' 51.5" L = 59.98' T = 30.42' R = 145.00'



I, Mark A. Parris, certify that the right of way and permanent easement monumentation for this project shown herein was completed under my direct and responsible charge from an actual survey made under my supervision; that all horizontal closures had a minimum ratio of precision of 1:10,000 (Class A). Field work was performed from 1/26/23 to 1/27/23, and all coordinates are based on NAD83/2011. That this survey was performed to meet the requirements of 21NCAC 56.1600 as applicable.
This 27th day of January, 2023.
Professional Land Surveyor L-4529

REVISIONS

7-FEB-2023 15:06 V:\NCS\2023\1506-V031200-040 B5893.con.\Surveys\TO BE SENT\B5893.LS.rw04.dgn
1506-V031200-040 B5893.con.\Surveys\TO BE SENT\B5893.LS.rw04.dgn
1506-V031200-040 B5893.con.\Surveys\TO BE SENT\B5893.LS.rw04.dgn

NOTES:

- 1. IF FURTHER INFORMATION REGARDING PROJECT CONTROL IS NEEDED PLEASE CONTACT THE LOCATION AND SURVEYS UNIT.
- 2. PROJECT CONTROL WAS ESTABLISHED USING GNSS, THE GLOBAL NAVIGATION SATELLITE SYSTEM.
- 3. RIGHT OF WAY MONUMENTATION ESTABLISHED 1/26/23 TO 1/27/23 .