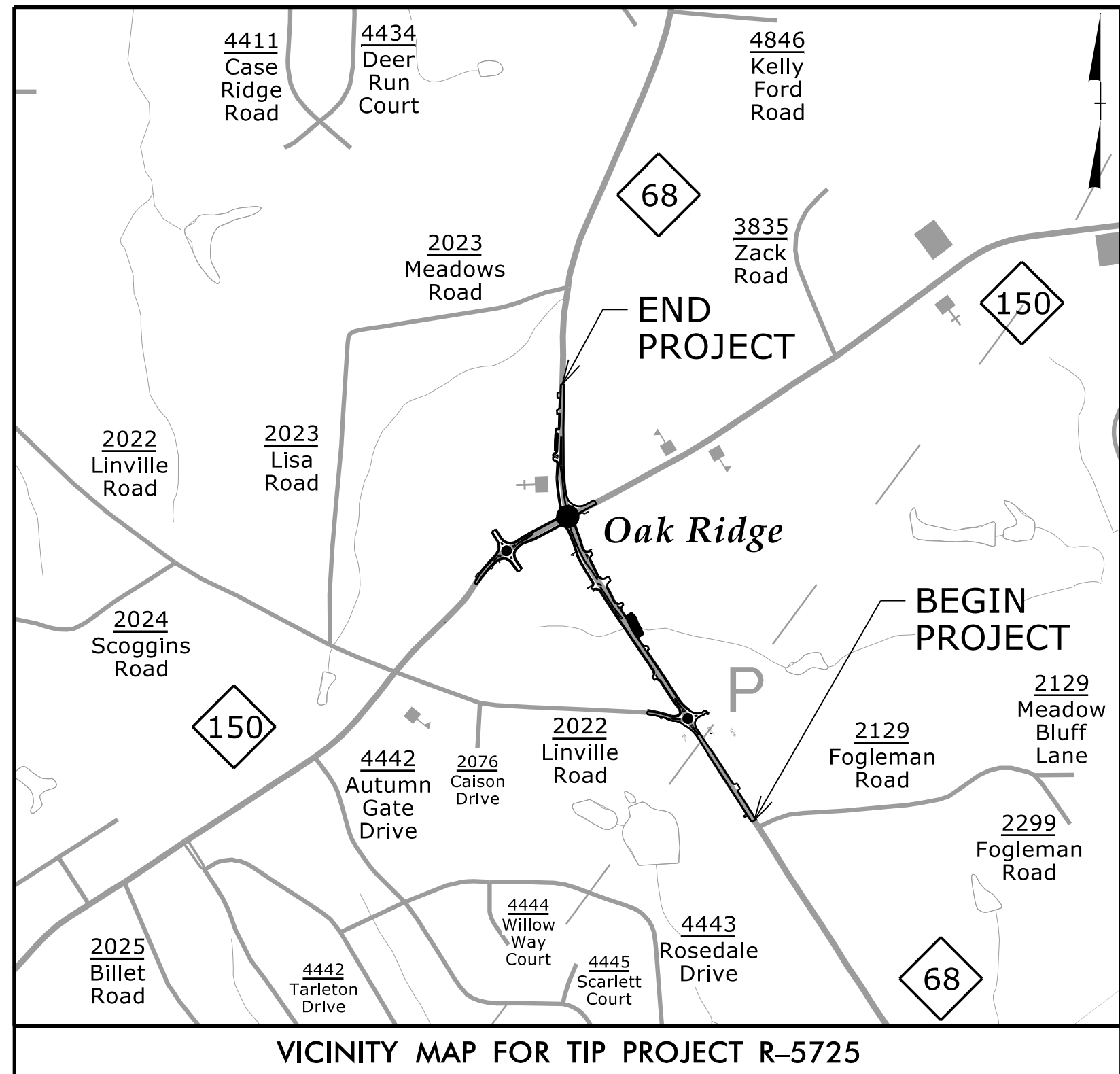


TIP PROJECT: R-5725



STATE OF NORTH CAROLINA
DIVISION OF HIGHWAYS

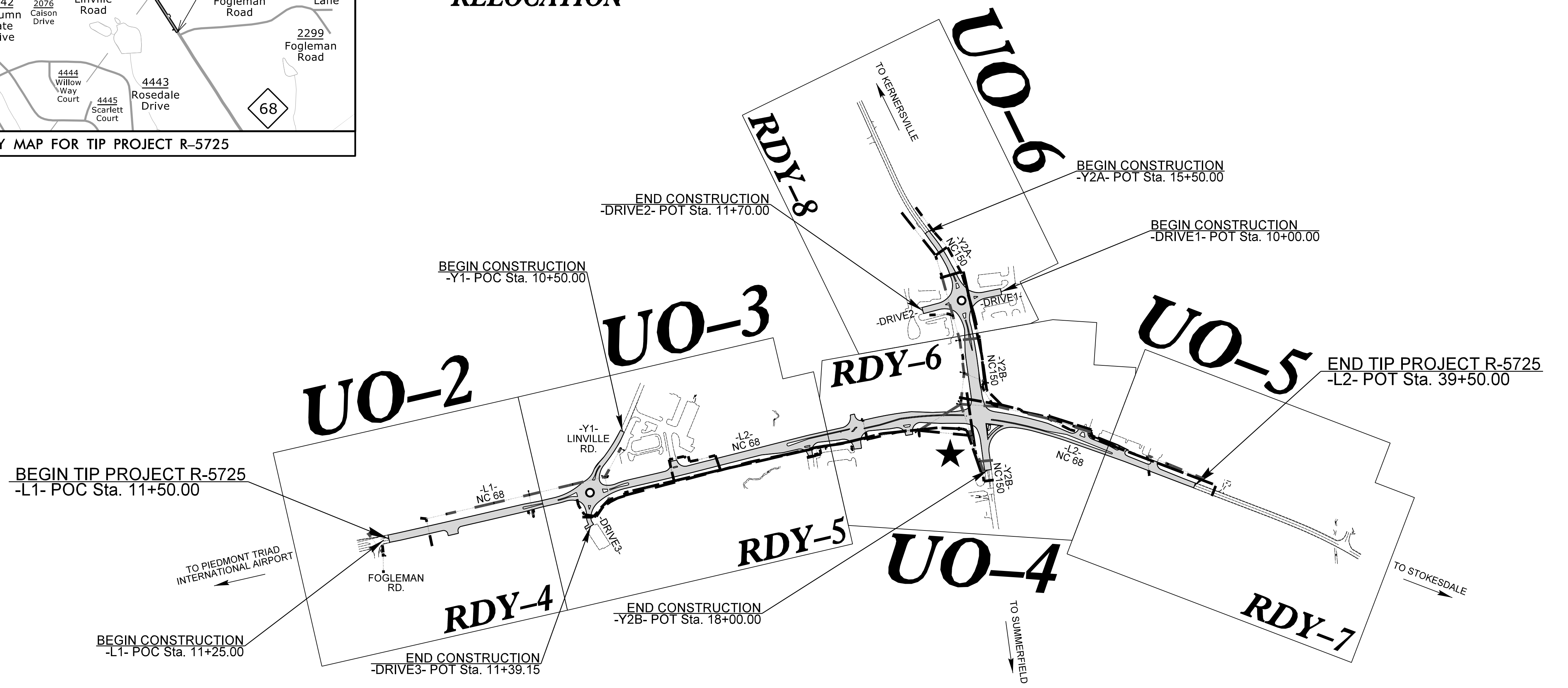
**UTILITIES BY OTHERS PLANS
GUILFORD COUNTY**

**LOCATION: INTERSECTION IMPROVEMENTS ALONG NC 68
AND NC 150 IN OAK RIDGE**

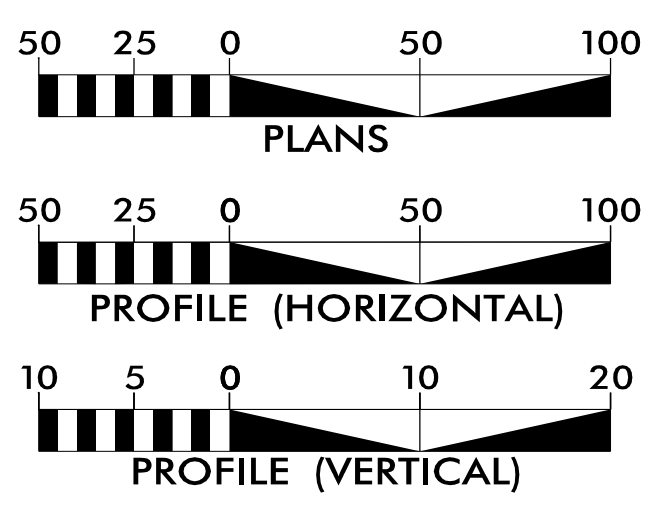
**TYPE OF WORK: COMMUNICATIONS, GAS, AND POWER
RELOCATION**

T.I.P. NO.	SHEET NO.
R-5725	UO-1

NOTE:
ALL UTILITY WORK SHOWN ON THIS SHEET WILL BE DONE BY OTHERS.
NO PAYMENT WILL BE MADE TO THE CONTRACTOR FOR UTILITY WORK SHOWN ON THIS SHEET.



GRAPHIC SCALES



INDEX OF SHEETS

SHEET NO.:	DESCRIPTION:
UO-1	TITLE SHEET
UO-2 THRU UO-6	UBO PLAN SHEETS

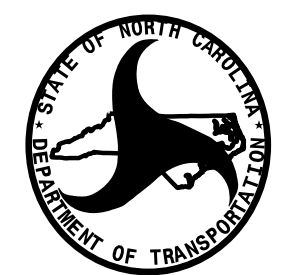
UTILITY OWNERS WITH CONFLICTS

- (A) COMMUNICATIONS - AT&T
- (B) COMMUNICATIONS - CHARTER
- (C) POWER - DUKE ENERGY
- (D) GAS - PIEDMONT

PREPARED IN THE OFFICE OF:



MICHAEL BURNS, PE PROJECT ENGINEER
ANDY YOUNG, PE PROJECT DESIGN ENGINEER



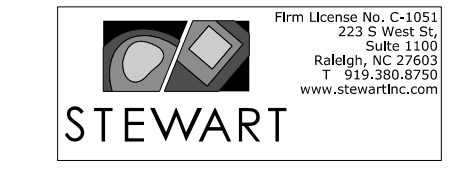
DIVISION OF HIGHWAYS
DIVISION 7
1584 YANCEYVILLE STREET
GREENSBORO NC 27415-1496
PHONE (336) 487-0000
FAX (336) 334-3637

BRIAN KETNER, PE NCDOT CONTACT

3/15/2023
U:\Proj\AR5725_ut_tsh_U001_psh.dgn
USER:burnsm

UTILITIES BY OTHERS

NOTE:
ALL PROPOSED UTILITY WORK
SHOWN ON THIS SHEET WILL
BE DONE BY OTHERS



NOTE:
A MAJOR GAS PIPELINE EASEMENT (TRANSCO) CROSSES NC 68 JUST SOUTH OF LINVILLE ROAD. THIS EASEMENT CONTAINS THREE ACTIVE GAS PIPELINES:

1. 42" DUCTILE IRON ENCASEMENT OVER A 36" STEEL PIPE
2. 42" DUCTILE IRON ENCASEMENT OVER A 30" STEEL PIPE
3. ABANDONED 42" DUCTILE IRON ENCASEMENT OVER A 36" STEEL PIPE

THE PIPELINE EASEMENT ALSO CONTAINS A CATHODE PROTECTION SYSTEM, ALL OF WHICH ARE OWNED BY WILLIAMS COMPANY.

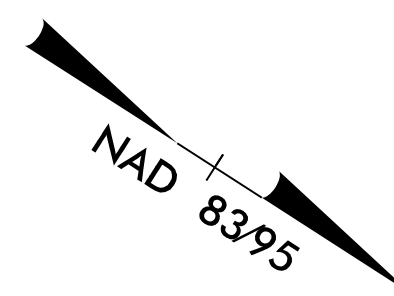
ADDITIONALLY, THERE IS A FIBER OPTIC CABLE THAT IS CONTAINED WITHIN THE EASEMENT THAT IS OWNED BY BRIGHTSPEED.

NOTE:
PRIOR TO ANY WORK BEING COMPLETED WITHIN THE TRANSCO PIPELINE EASEMENT, CONTRACTOR MUST REACH OUT TO WILLIAM'S COMPANY POINT OF CONTACT. CONTACT INFORMATION IS AS FOLLOWS:

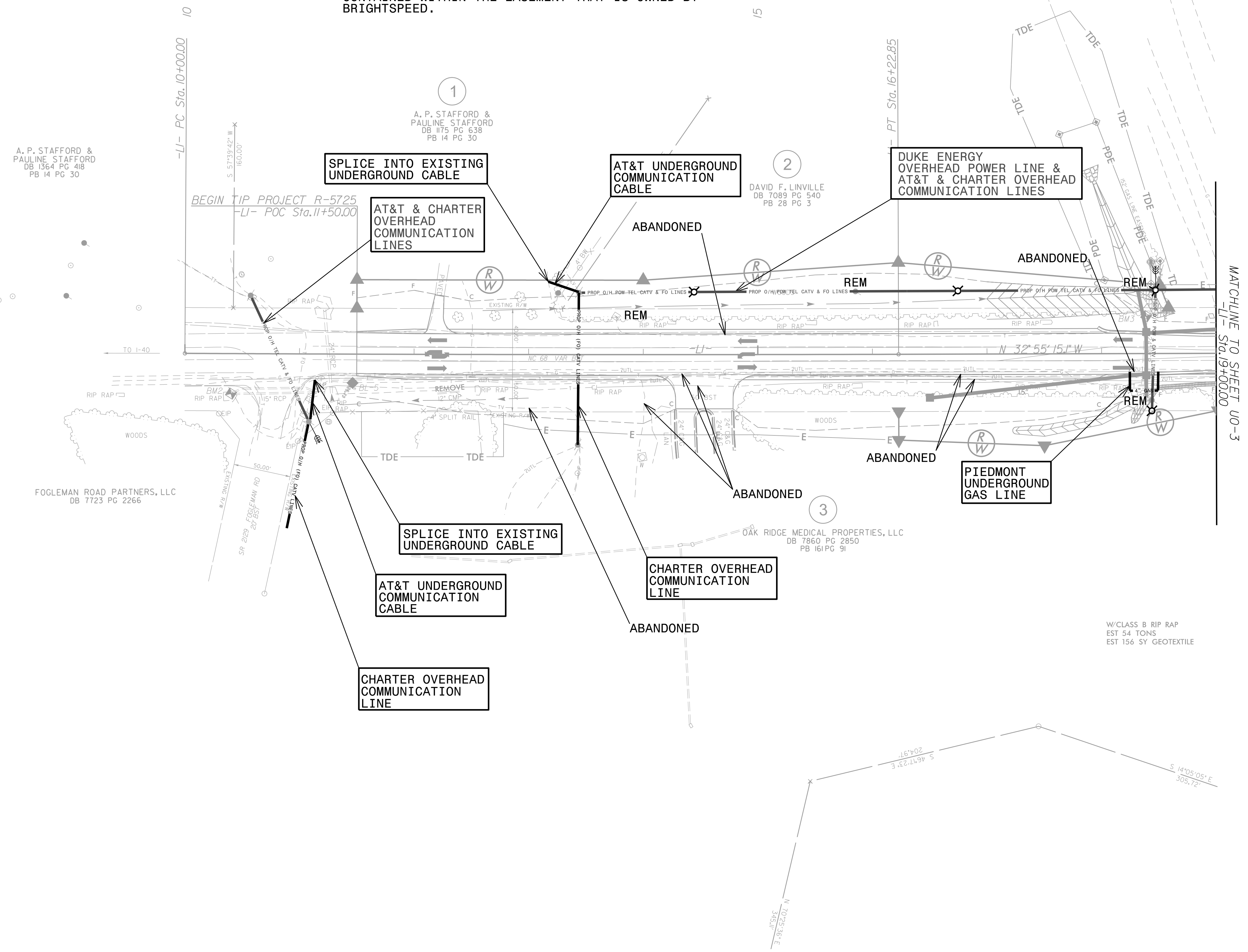
MIKE VIETOR
WILLIAMS COMPANY
336-361-3029

PRIOR TO ANY WORK BEING COMPLETED WITHIN THE TRANSCO PIPELINE EASEMENT, CONTRACTOR MUST REACH OUT TO BRIGHTSPEED'S POINT OF CONTACT. CONTACT INFORMATION IS AS FOLLOWS:

JASON WILLIAMS
BRIGHTSPEED
336-215-8732



REVISIONS



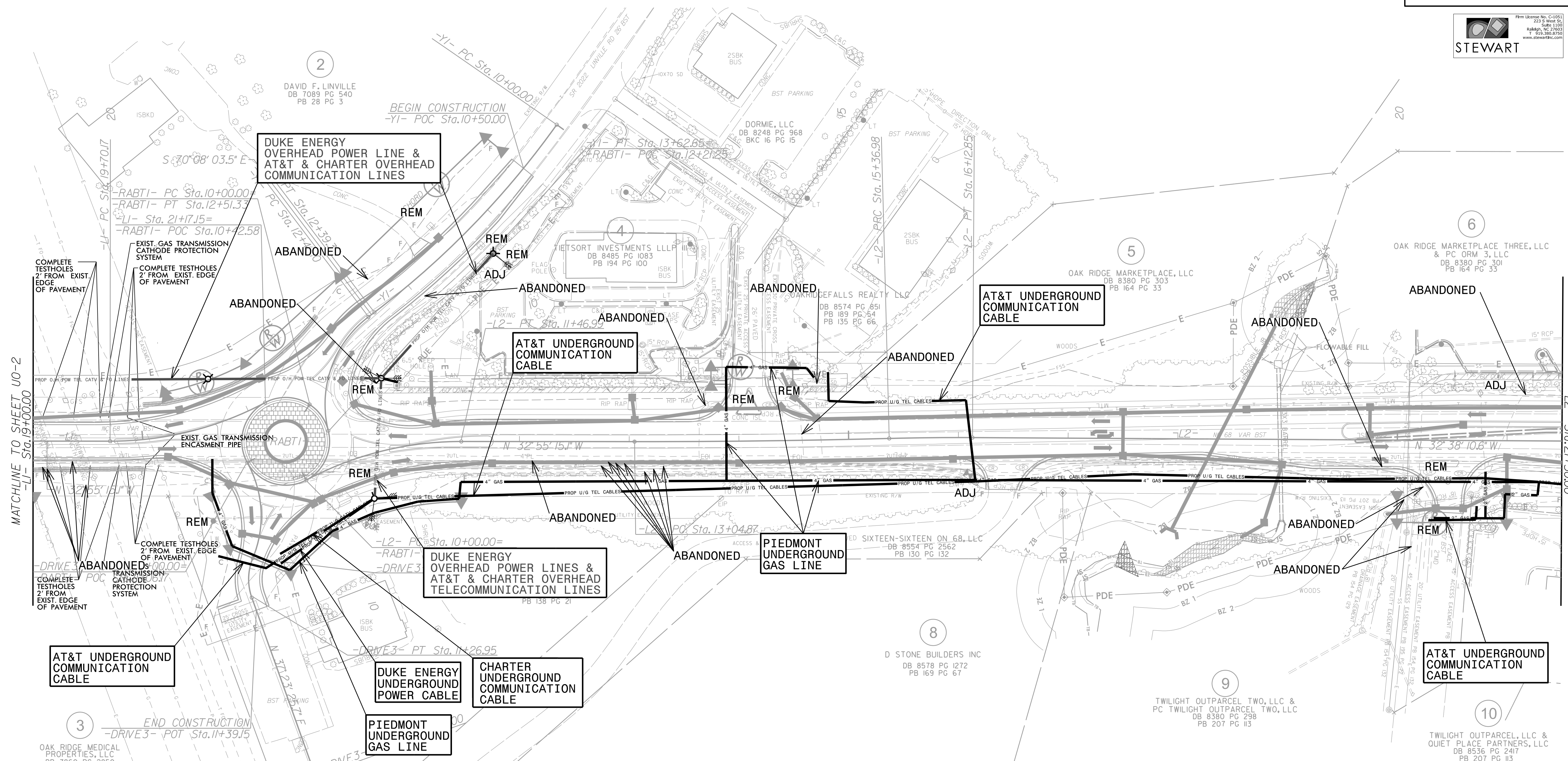
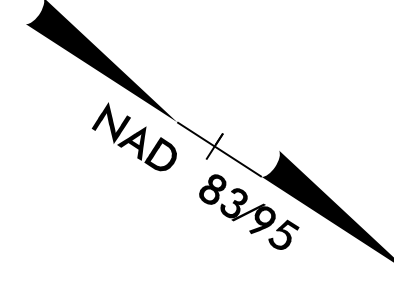
W/CLASS B RIP RAP
EST 54 TONS
EST 156 SY GEOTEXTILE

5/14/99

3/14/2023
ut_rdy4_U002_psh.dgn
JSE/brb

UTILITIES BY OTHERS

NOTE:
ALL PROPOSED UTILITY WORK SHOWN ON THIS SHEET WILL BE DONE BY OTHERS



REVISIONS

MATCHLINE TO SHEET U0-2
LI- Sta. 9+00.00

MATCHLINE TO SHEET U0-4
LI- Sta. 21+50.00

NOTE:

A MAJOR GAS PIPELINE EASEMENT (TRANSCO) CROSSES NC 68 JUST SOUTH OF LINVILLE ROAD. THIS EASEMENT CONTAINS THREE ACTIVE GAS PIPELINES:

1. 42" DUCTILE IRON ENCASEMENT OVER A 36" STEEL PIPE
2. 42" DUCTILE IRON ENCASEMENT OVER A 30" STEEL PIPE
3. ABANDONED 42" DUCTILE IRON ENCASEMENT OVER A 36" STEEL PIPE

THE PIPELINE EASEMENT ALSO CONTAINS A CATHODE PROTECTION SYSTEM, ALL OF WHICH ARE OWNED BY WILLIAMS COMPANY.

ADDITIONALLY, THERE IS A FIBER OPTIC CABLE THAT IS CONTAINED WITHIN THE EASEMENT THAT IS OWNED BY BRIGHTSPEED.

NOTE:

PRIOR TO ANY WORK BEING COMPLETED WITHIN THE TRANSCO PIPELINE EASEMENT, UTILITY OWNER MUST REACH OUT TO WILLIAM'S COMPANY POINT OF CONTACT. CONTACT INFORMATION IS AS FOLLOWS:

MIKE VIETOR
WILLIAMS COMPANY
336-361-3029

PRIOR TO ANY WORK BEING COMPLETED WITHIN THE TRANSCO PIPELINE EASEMENT, UTILITY OWNER MUST REACH OUT TO BRIGHTSPEED'S POINT OF CONTACT. CONTACT INFORMATION IS AS FOLLOWS:

JASON WILLIAMS
BRIGHTSPEED
336-215-8732

5/14/99

3/15/2023 ut_r.dj5_U003_psh.dgn
11:51:00

UTILITIES BY OTHERS

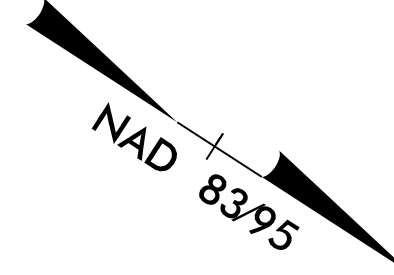
NOTE:
ALL PROPOSED UTILITY WORK SHOWN ON THIS SHEET WILL BE DONE BY OTHERS



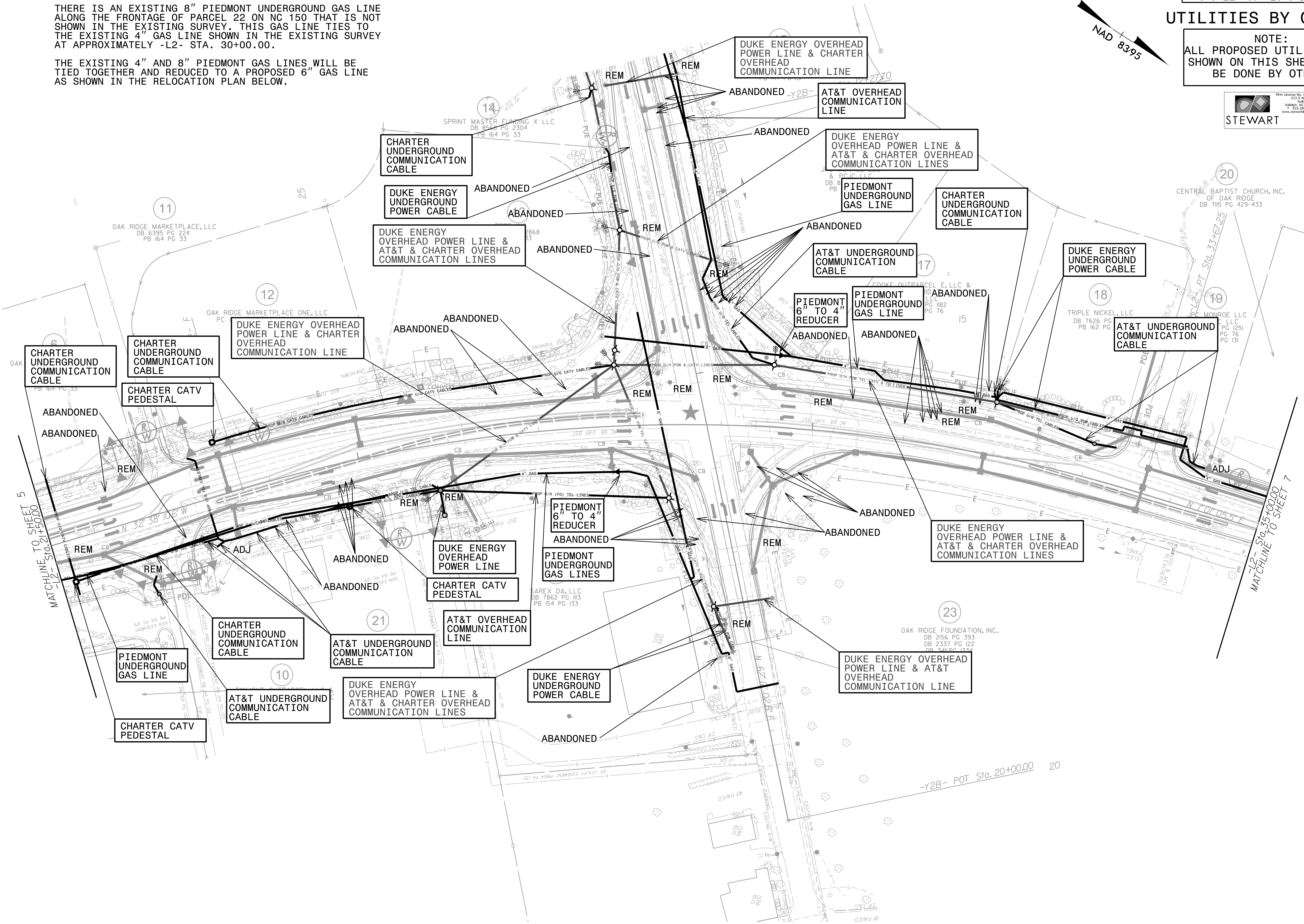
NOTE:

THERE IS AN EXISTING 8" PIEDMONT UNDERGROUND GAS LINE ALONG THE FRONTAGE OF PARCEL 22 ON NC 150 THAT IS NOT SHOWN IN THE EXISTING SURVEY. THIS GAS LINE TIES TO THE EXISTING 4" GAS LINE SHOWN IN THE EXISTING SURVEY AT APPROXIMATELY -L2- STA. 30+00.00.

THE EXISTING 4" AND 8" PIEDMONT GAS LINES WILL BE TIED TOGETHER AND REDUCED TO A PROPOSED 6" GAS LINE AS SHOWN IN THE RELOCATION PLAN BELOW.



REVISIONS

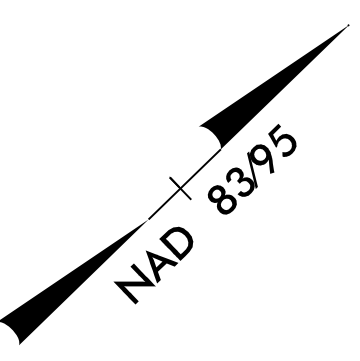


MATCHLINE TO SHEET 5
-L2- Sta. 21+50.00

MATCHLINE TO SHEET 7
-L2- Sta. 35+00.00

UTILITIES BY OTHERS

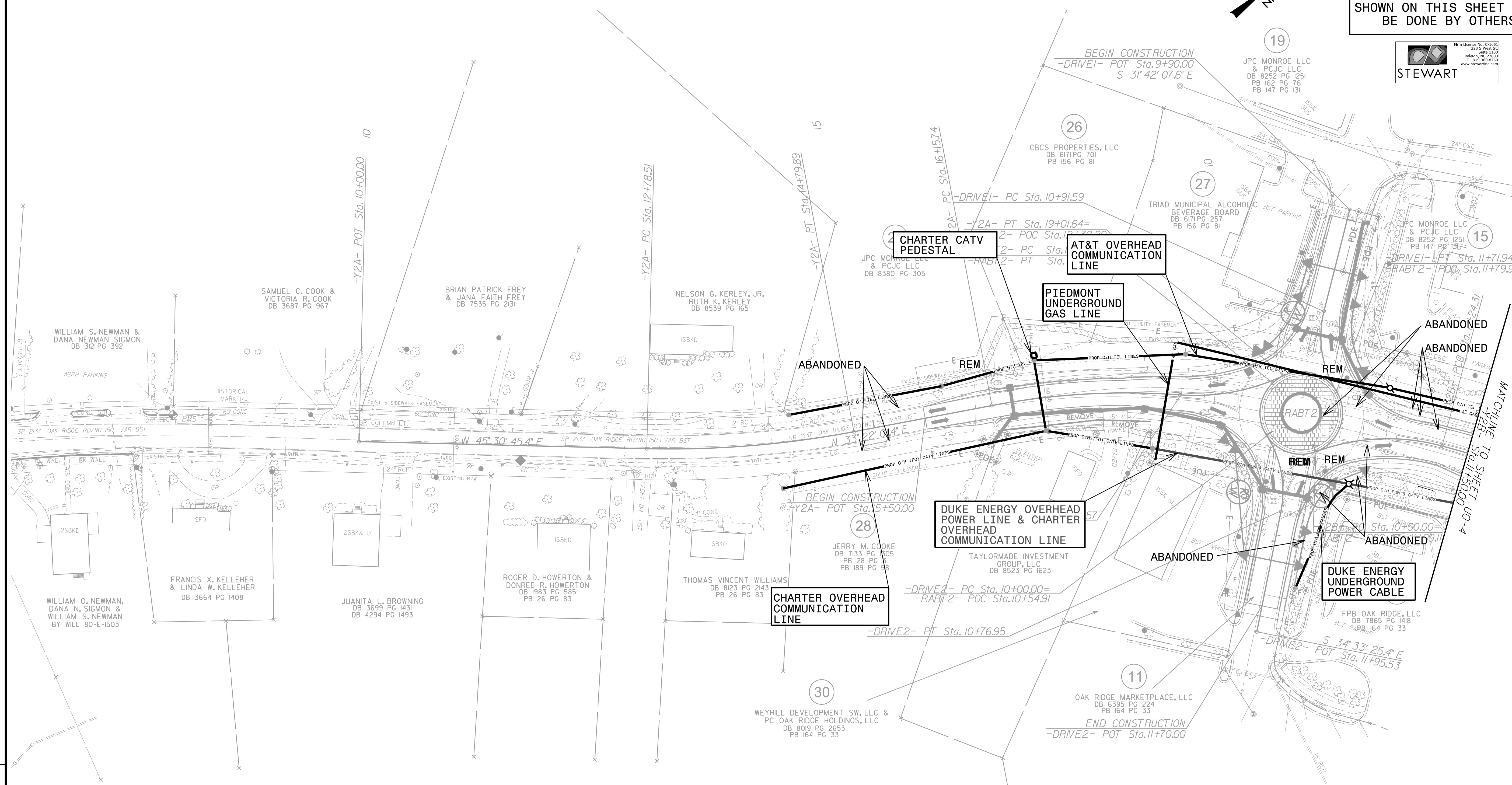
NOTE:
ALL PROPOSED UTILITY WORK
SHOWN ON THIS SHEET WILL
BE DONE BY OTHERS



REVISIONS

5/14/2023

3/14/2023
I:\5725\rdy8\U006\psh.dgn
JSE



CHARTER CATV PEDESTAL

AT&T OVERHEAD COMMUNICATION LINE

PIEDMONT UNDERGROUND GAS LINE

DUKE ENERGY OVERHEAD POWER LINE & CHARTER OVERHEAD COMMUNICATION LINE

DUKE ENERGY UNDERGROUND POWER CABLE

CHARTER OVERHEAD COMMUNICATION LINE

ABANDONED

ABANDONED

ABANDONED

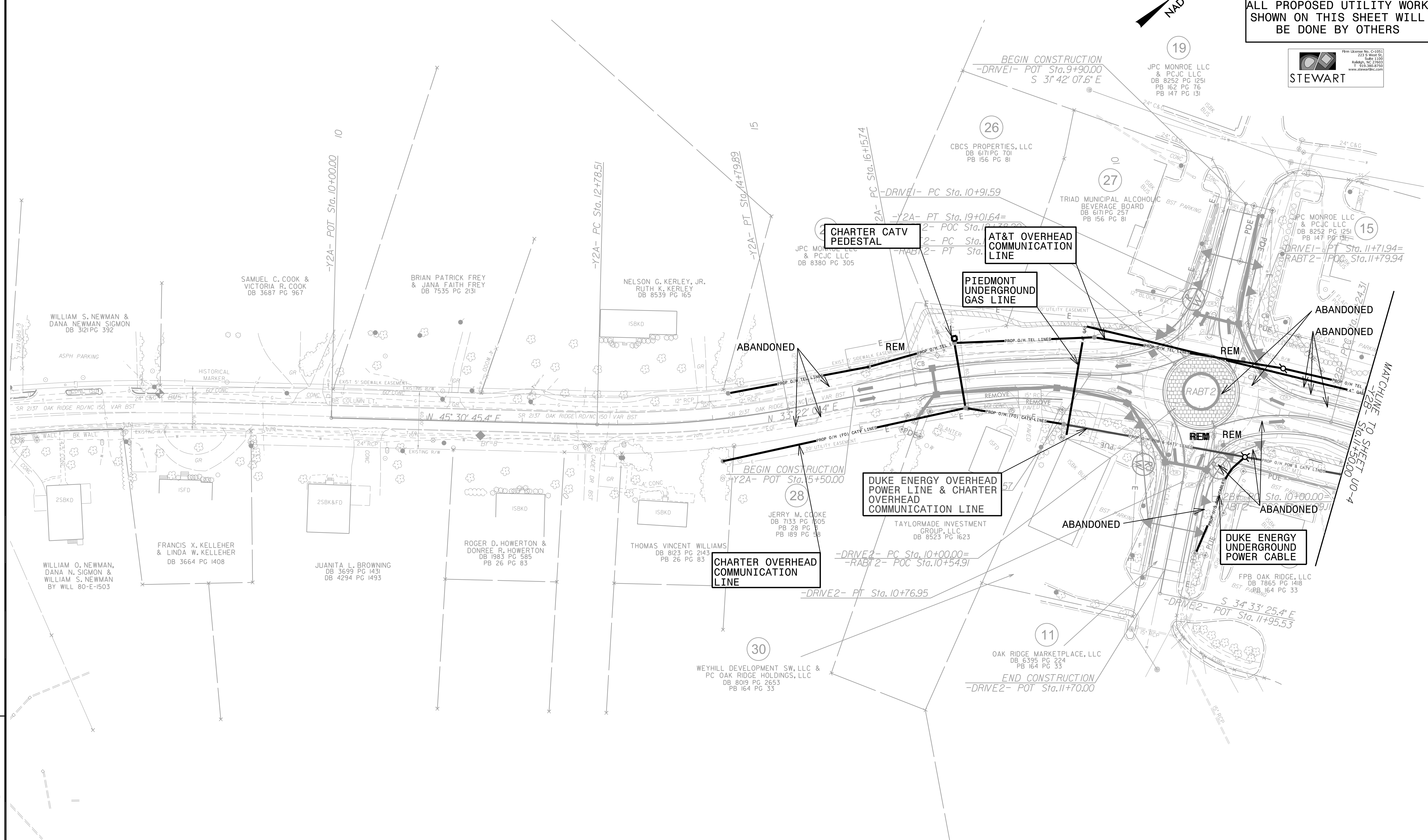
ABANDONED

MATCHLINE TO SHEET U0-4
-Y2B- POT Sta. 11+50.00

BEGIN CONSTRUCTION
-DRIVE1- POT Sta. 9+90.00
S 31° 42' 07.6" E

BEGIN CONSTRUCTION
-Y2A- POT Sta. 5+50.00

END CONSTRUCTION
-DRIVE2- POT Sta. 11+70.00



WILLIAM S. NEWMAN & DANA NEWMAN SIGMON
DB 3121 PG 392

SAMUEL C. COOK & VICTORIA R. COOK
DB 3687 PG 967

BRIAN PATRICK FREY & JANA FAITH FREY
DB 7535 PG 2131

NELSON G. KERLEY, JR. & RUTH K. KERLEY
DB 8539 PG 165

WILLIAM O. NEWMAN, DANA N. SIGMON & WILLIAM S. NEWMAN
BY WILL 80-E-1503

FRANCIS X. KELLEHER & LINDA W. KELLEHER
DB 3664 PG 1408

JUANITA L. BROWNING
DB 3699 PG 1431
DB 4294 PG 1493

ROGER D. HOWERTON & DONREE R. HOWERTON
DB 1983 PG 585
PB 26 PG 83

THOMAS VINCENT WILLIAMS
DB 8123 PG 2143
PB 26 PG 83

JERRY M. COOKE
DB 7133 PG 1505
PB 28 PG 8
PB 189 PG 58

TAYLORMADE INVESTMENT GROUP, LLC
DB 8523 PG 1623

OAK RIDGE MARKETPLACE, LLC
DB 6395 PG 224
PB 164 PG 33

FPB OAK RIDGE, LLC
DB 7865 PG 1418
BST PARB, 164 PG 33

CBCS PROPERTIES, LLC
DB 6171 PG 701
PB 156 PG 81

TRIAD MUNICIPAL ALCOHOLIC BEVERAGE BOARD
DB 6171 PG 257
PB 156 PG 81

JPC MONROE LLC & PCJC LLC
DB 8252 PG 1251
PB 147 PG 131

JPC MONROE LLC & PCJC LLC
DB 8252 PG 1251
PB 162 PG 76
PB 147 PG 131

JPC MONROE LLC & PCJC LLC
DB 8380 PG 305

Firm license No. C-1051
233 S. West St., Suite 1100
Raleigh, NC 27601
T 919.386.8799
www.stewartinc.com

STEWART

26

27

15

30

11

19

