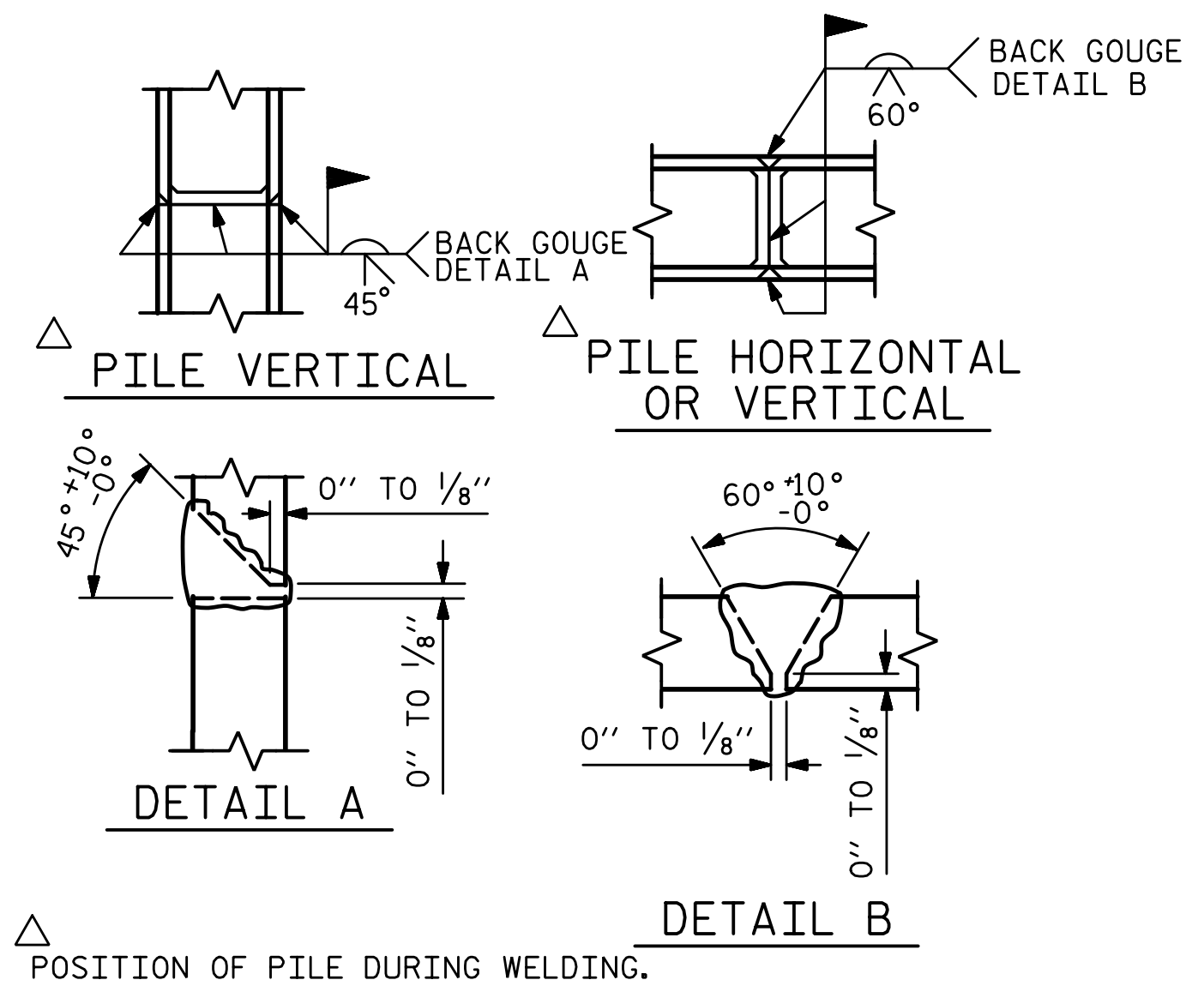
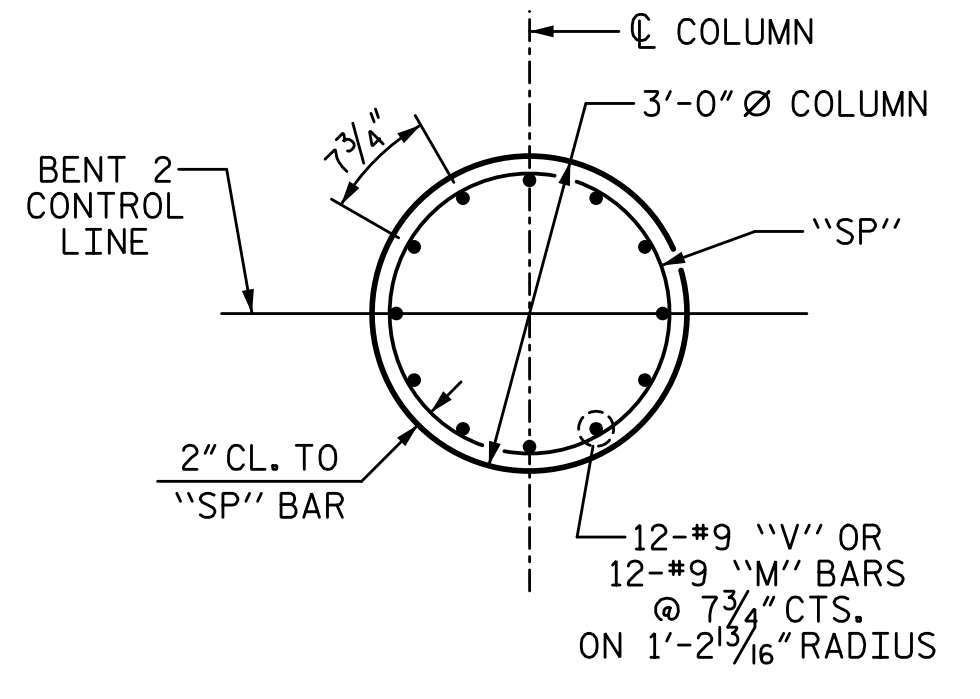


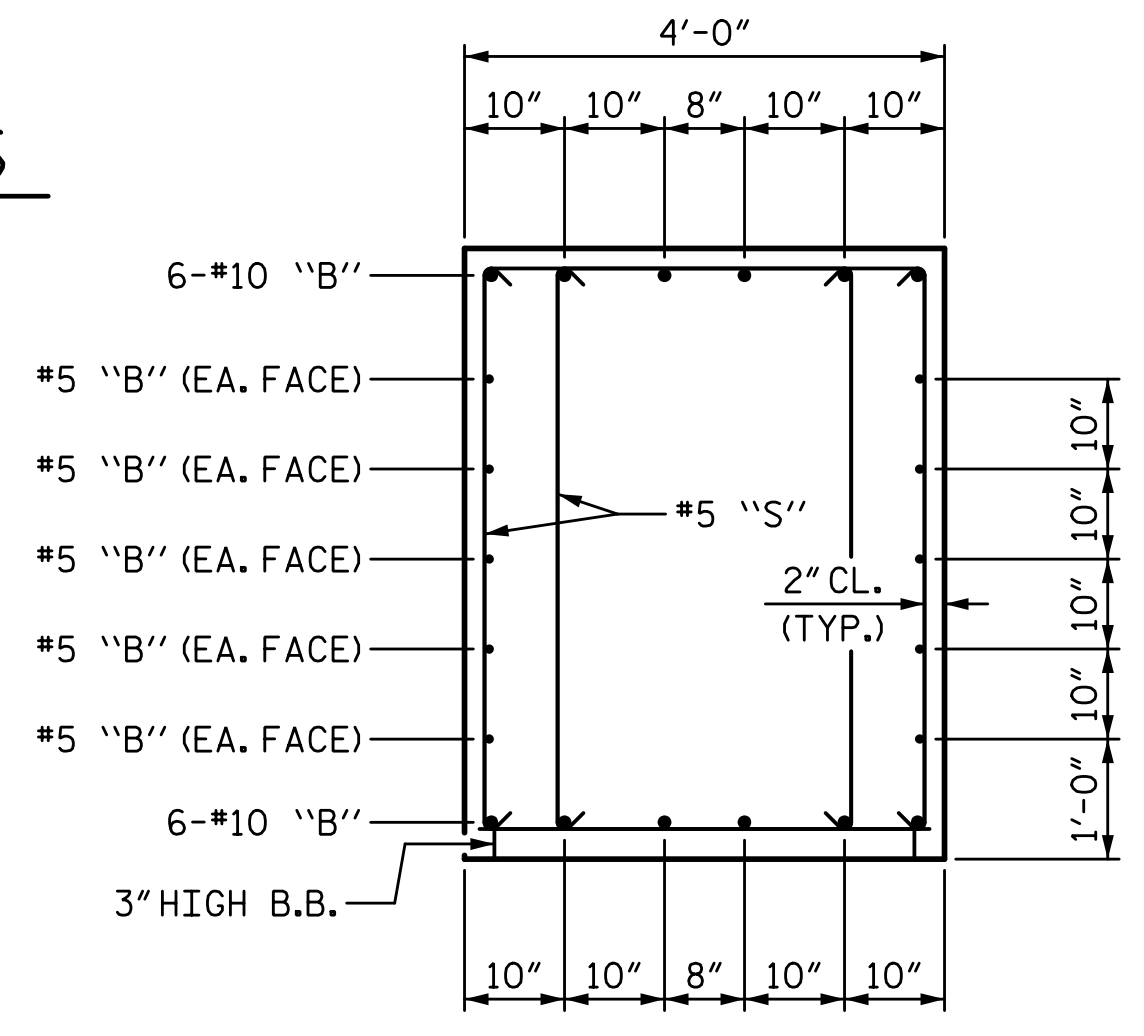
4/6/2023 12:02:10 PM P:\Raleigh\Projects\2018\Division 9 (Mott MacDonald)\U-2729\Structures\Drawings\Final\U2729_SMU_B2_330290.dgn



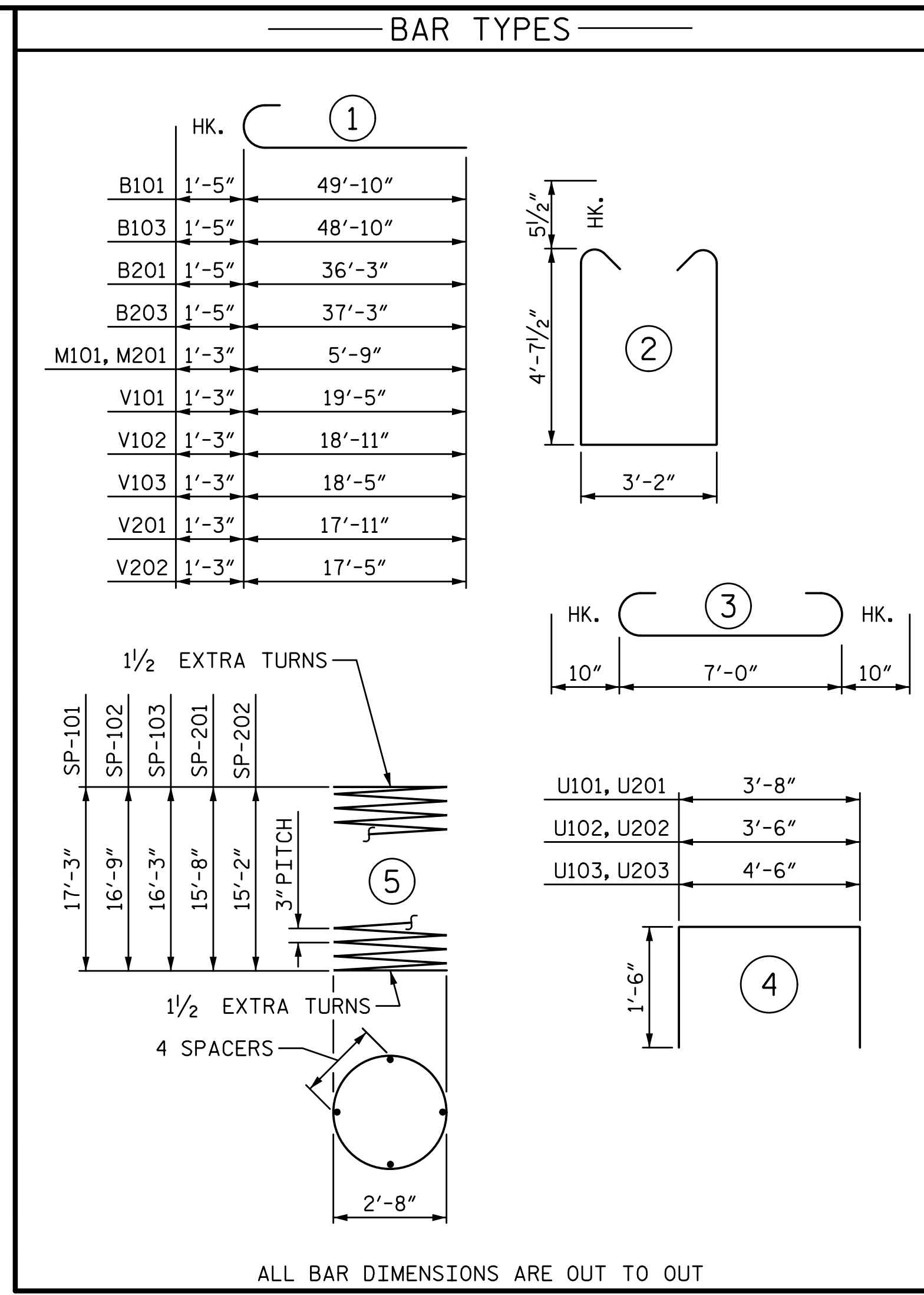
PILE SPLICING DETAILS



PLAN OF COLUMN

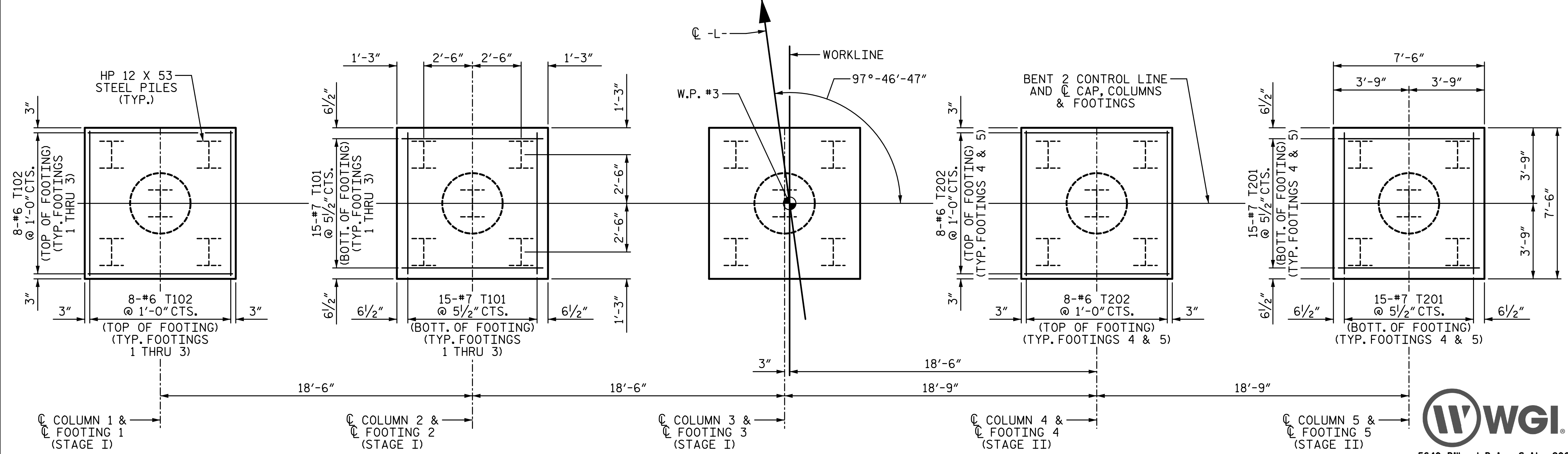


SECTION A-A



BILL OF MATERIAL											
BENT 2											
STAGE I					STAGE II						
BAR	NO.	SIZE	TYPE	LENGTH	WEIGHT	BAR	NO.	SIZE	TYPE	LENGTH	WEIGHT
B101	6	#10		51'-3"	1323	B201	6	#10		37'-8"	972
B102	20	#5	STR	27'-1"	565	B202	10	#5	STR	37'-1"	387
B103	6	#10		50'-3"	1297	B203	6	#10		38'-8"	998
B104	6	#4	STR	4'-2"	17	B204	6	#4	STR	4'-1"	16
B105	30	#4	STR	5'-10"	117	B205	24	#4	STR	4'-3"	68
M101, M201	1	#9		7'-0"	857	M201	24	#9		7'-0"	571
S101	86	#5		13'-4"	1196	S201	76	#5		13'-4"	1057
T101	90	#7		8'-8"	1594	T201	60	#7		8'-8"	1063
T102	48	#6	STR	7'-0"	505	T202	32	#6	STR	7'-0"	336
U101	59	#4		6'-8"	263	U201	45	#4		6'-8"	200
U102	5	#4		6'-6"	22	U202	5	#4		6'-6"	22
U103	4	#4		7'-6"	20	U203	4	#4		7'-6"	20
V101	12	#9		20'-8"	843	V201	12	#9		19'-2"	782
V102	12	#9		20'-2"	823	V202	12	#9		18'-8"	762
V103	12	#9		19'-8"	802						
SP-101	1	*		594'-1"	397	SP-201	1	*		544'-7"	364
SP-102	1	*		577'-7"	386	SP-202	1	*		528'-1"	353
SP-103	1	*		561'-1"	375						
REINFORCING STEEL					10244 LB	REINFORCING STEEL					7254 LB
SPIRAL COL. REINF. STEEL					1158 LB	SPIRAL COL. REINF. STEEL					717 LB
CLASS "A" CONCRETE BREAKDOWN						CLASS "A" CONCRETE BREAKDOWN					
POUR 1 (FOOTINGS)					17.8 CY	POUR 1 (FOOTINGS)					11.9 CY
POUR 2 (COLUMNS)					12.9 CY	POUR 2 (COLUMNS)					8.0 CY
POUR 3 (CAP)					36.7 CY	POUR 3 (CAP)					29.0 CY
TOTAL					67.4 CY	TOTAL					48.9 CY
HP 12 X 53 STEEL PILES						HP 12 X 53 STEEL PILES					
NO. 15					1050 LF	NO. 10					700 LF
PILE DRIVING EQUIPMENT SETUP						PILE DRIVING EQUIPMENT SETUP					
HP 14 X 73 STEEL PILES					15 EA	HP 14 X 73 STEEL PILES					10 EA

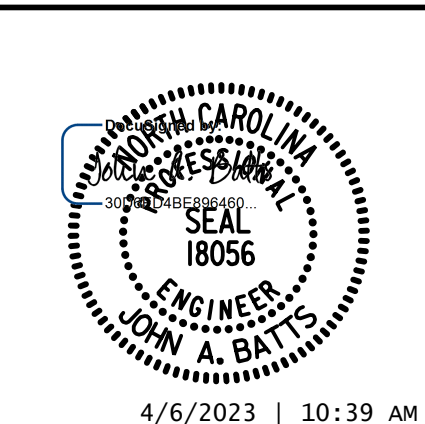
* THE 'SP' SPIRAL REINFORCING STEEL SHALL BE W20 OR D-20 COLD DRAWN WIRE OR #4 PLAIN OR DEFORMED BAR.



PLAN OF FOOTINGS

DRAWN BY: T. BANKOVICH DATE: 9-22
 CHECKED BY: T.J. BEACH DATE: 9-22
 DESIGN ENGINEER OF RECORD: J.A. BATTS DATE: 9-22

(PILE PLACEMENT AND DIMENSIONS ARE TYPICAL FOR EACH FOOTING)
 (REINFORCING STEEL IS TYPICAL FOR EACH FOOTING, EACH STAGE)



PROJECT NO. U-2729
 FORSYTH COUNTY
 STATION: 33+99.11 -L-

SHEET 3 OF 3

STATE OF NORTH CAROLINA DEPARTMENT OF TRANSPORTATION RALEIGH SUBSTRUCTURE					
BENT 2					
REVISIONS					
NO.	BY:	DATE:	NO.	BY:	DATE:
1			3		
2			4		

SHEET NO. S-50
TOTAL SHEETS 59

DOCUMENT NOT CONSIDERED FINAL
 UNLESS ALL SIGNATURES COMPLETED