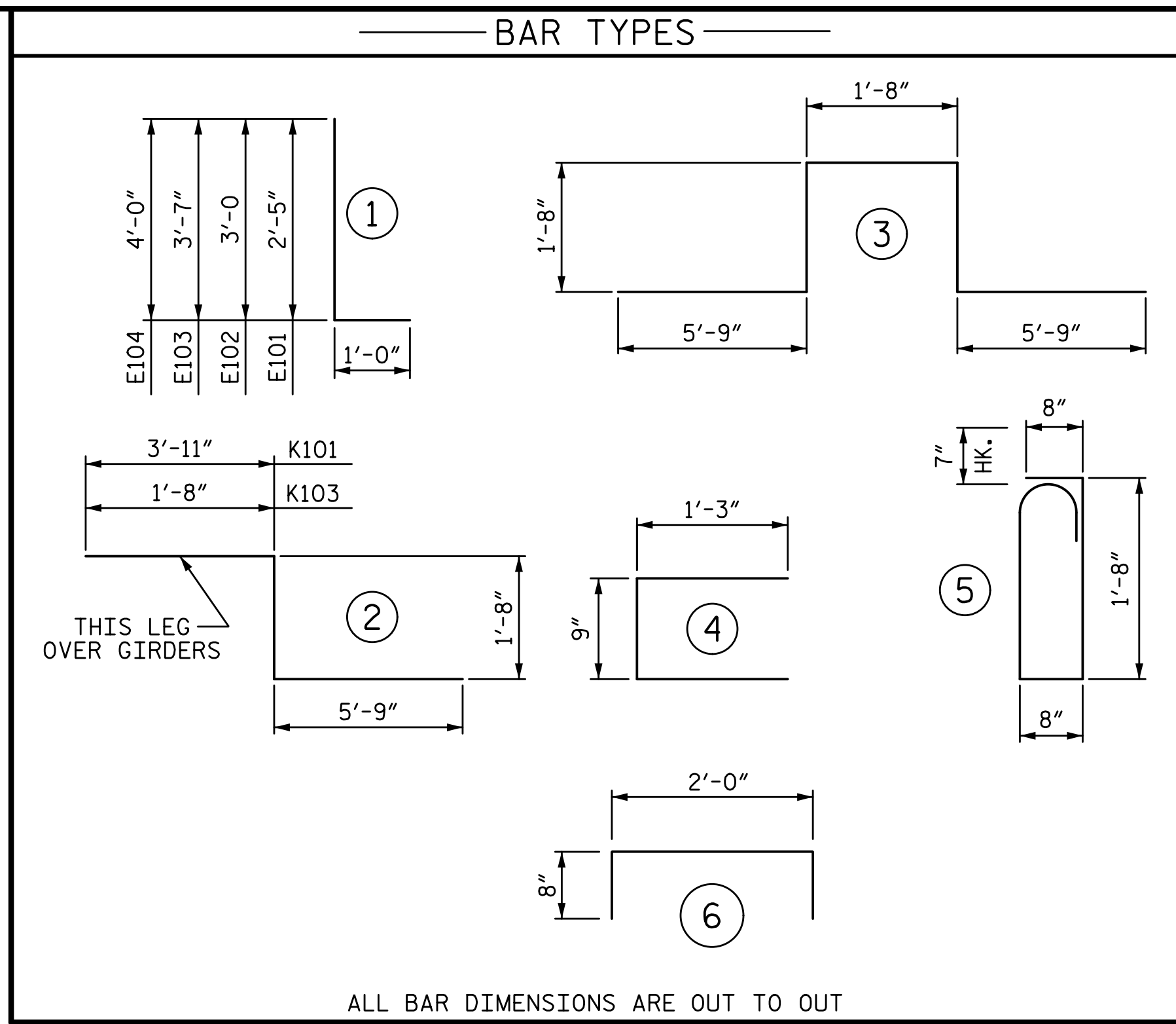
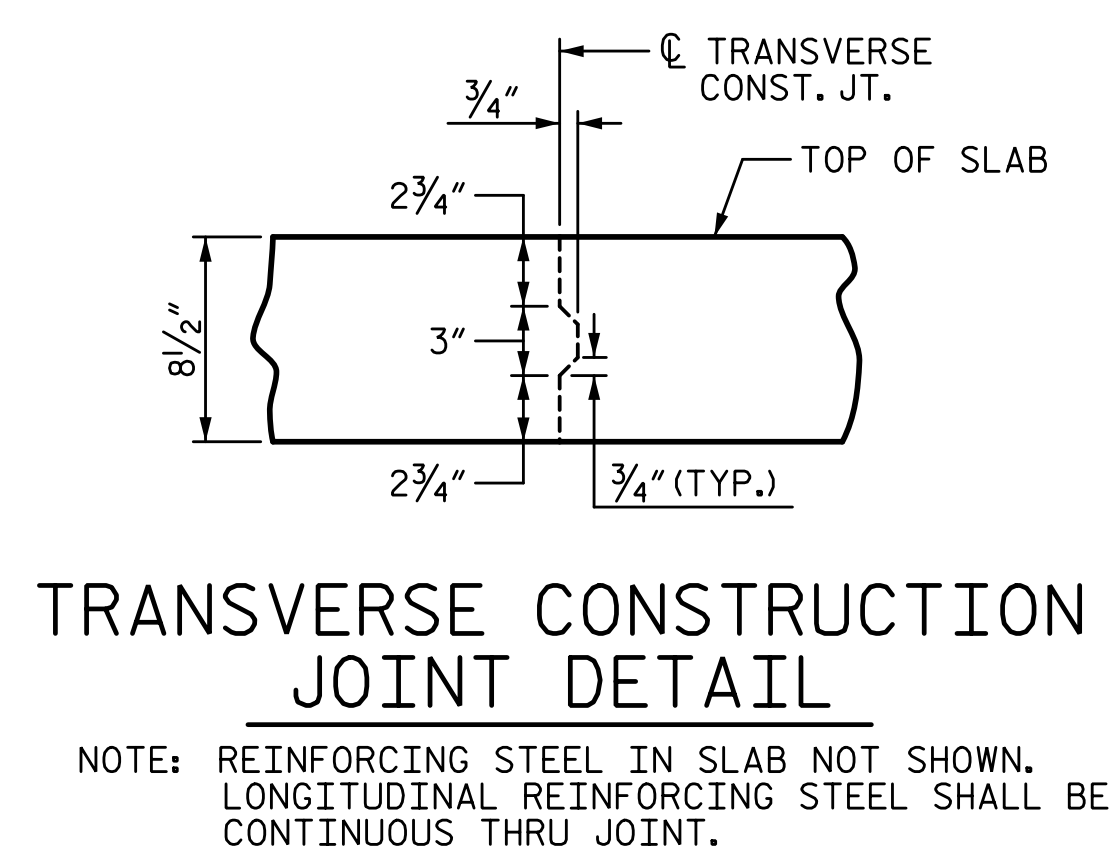
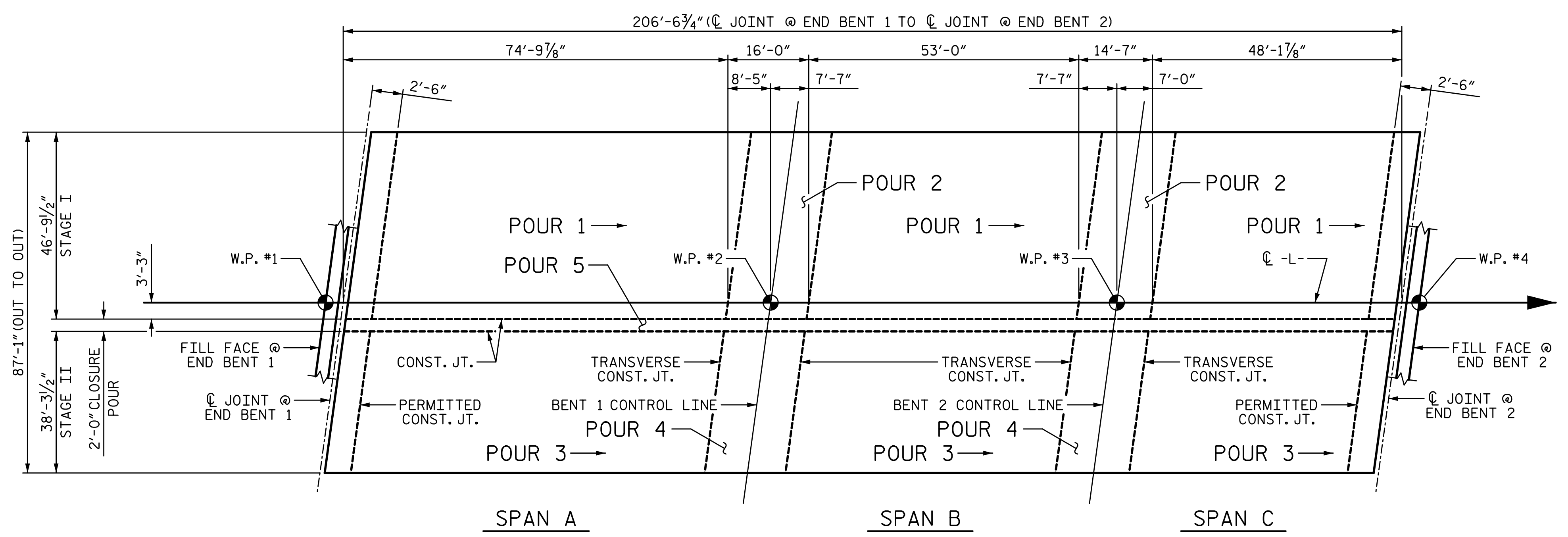


4/6/2023 12:02:04 PM P:\Raleigh\Projects\2018\Division 9 (Mott MacDonald)\U-2729\Structures\Drawings\Final\U2729_SMU_BM_330290.dgn



BILL OF MATERIAL													
STAGE I													
BAR	NO.	SIZE	TYPE	LENGTH	WEIGHT	BAR	NO.	SIZE	TYPE	LENGTH	WEIGHT		
* A1001	400	#5	STR	46'-5"	19365	* B110	32	#5	STR	55'-6"	1852		
A1002	400	#5	STR	46'-5"	19365	* B111	32	#4	STR	22'-0"	470		
						* B112	32	#5	STR	47'-1"	1571		
* A1101	2	#5	STR	44'-2"	92	* B113	32	#4	STR	36'-0"	770		
* A1102	2	#5	STR	40'-6"	84	* B114	62	#5	STR	32'-9"	2118		
* A1103	2	#5	STR	36'-10"	77	* B115	62	#5	STR	28'-7"	1848		
* A1104	2	#5	STR	33'-2"	69	* B116	18	#4	STR	29'-4"	353		
* A1105	2	#5	STR	29'-6"	62	* B117	12	#4	STR	35'-2"	282		
* A1106	2	#5	STR	25'-10"	54	* B118	12	#4	STR	28'-8"	230		
* A1107	2	#5	STR	22'-2"	46	* B119	6	#4	STR	35'-9"	143		
* A1108	2	#5	STR	18'-6"	39	* B120	3	#4	STR	15'-0"	30		
* A1109	2	#5	STR	14'-10"	31	* B121	6	#4	STR	35'-2"	141		
* A1110	2	#5	STR	11'-2"	23	* B122	6	#4	STR	28'-8"	115		
* A1111	2	#5	STR	7'-6"	16	* B123	12	#4	STR	2'-11"	23		
* A1112	2	#5	STR	3'-11"	8	* B124	12	#4	STR	2'-9"	22		
						* B125	12	#4	STR	2'-7"	21		
A1201	2	#5	STR	44'-2"	92	* B126	12	#4	STR	2'-6"	20		
A1202	2	#5	STR	40'-6"	84	* B127	92	#4	STR	2'-6"	154		
A1203	2	#5	STR	36'-10"	77								
A1204	2	#5	STR	33'-2"	69	* D101	412	#6	STR	4'-10"	2991		
A1205	2	#5	STR	29'-6"	62	D202	412	#6	STR	4'-10"	2991		
A1206	2	#5	STR	25'-10"	54								
A1207	2	#5	STR	22'-2"	46	* E101	4	#7	1	3'-5"	28		
A1208	2	#5	STR	18'-6"	39	* E102	4	#7	1	4'-0"	33		
A1209	2	#5	STR	14'-10"	31	* E103	4	#7	1	4'-7"	37		
A1210	2	#5	STR	11'-2"	23	* E104	4	#7	1	5'-0"	41		
A1211	2	#5	STR	7'-6"	16								
A1212	2	#5	STR	3'-11"	8	* F101	4	#6	STR	1'-8"	10		
						* F102	4	#6	STR	3'-3"	20		
B101	60	#5	STR	59'-5"	3718	* F103	8	#6	STR	3'-5"	41		
B102	173	#4	STR	10'-0"	1156	* F104	4	#6	STR	3'-5"	21		
B103	60	#4	STR	39'-6"	1583								
B104	60	#5	STR	28'-0"	1752	* G1	2	#5	STR	46'-10"	98		
B105	60	#4	STR	32'-6"	1303	* G10	203	#4	STR	6'-4"	859		
B106	60	#5	STR	38'-4"	2399								
B107	53	#4	STR	31'-11"	1130	* K101	4	#8	2	11'-4"	121		
B108	53	#4	STR	34'-9"	1230	* K102	16	#8	3	16'-6"	705		
* B109	64	#4	STR	28'-10"	1233	* K103	4	#8	2	9'-1"	97		
						K104	20	#4	STR	6'-10"	91		
						K105	20	#6	STR	6'-10"	205		
						* S1	70	#4	4	3'-3"	152		
						* S2	70	#5	5	5'-3"	383		
						* U1	60	#4	6	3'-4"	134		



REINFORCING STEEL	37524 LB
EPOXY COATED REINFORCING STEEL	37133 LB
* INDICATES EPOXY COATED REINFORCING STEEL	

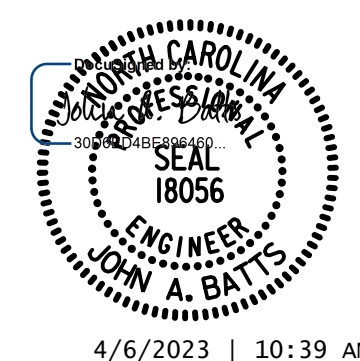
PROJECT NO. U-2729
 FORSYTH COUNTY
 STATION: 33+99.11 -L-
 SHEET 1 OF 2

STATE OF NORTH CAROLINA
 DEPARTMENT OF TRANSPORTATION
 RALEIGH
 SUPERSTRUCTURE

BILL OF MATERIAL

REVISIONS				SHEET NO.	
NO.	BY:	DATE:	NO.	BY:	DATE:
1			3		
2			4		

SHEET NO. S-39
TOTAL SHEETS 59



DRAWN BY: T. BANKOVICH DATE: 9-22
 CHECKED BY: T.J. BEACH DATE: 9-22
 DESIGN ENGINEER OF RECORD: J.A. BATTS DATE: 9-22

DOCUMENT NOT CONSIDERED FINAL
 UNLESS ALL SIGNATURES COMPLETED