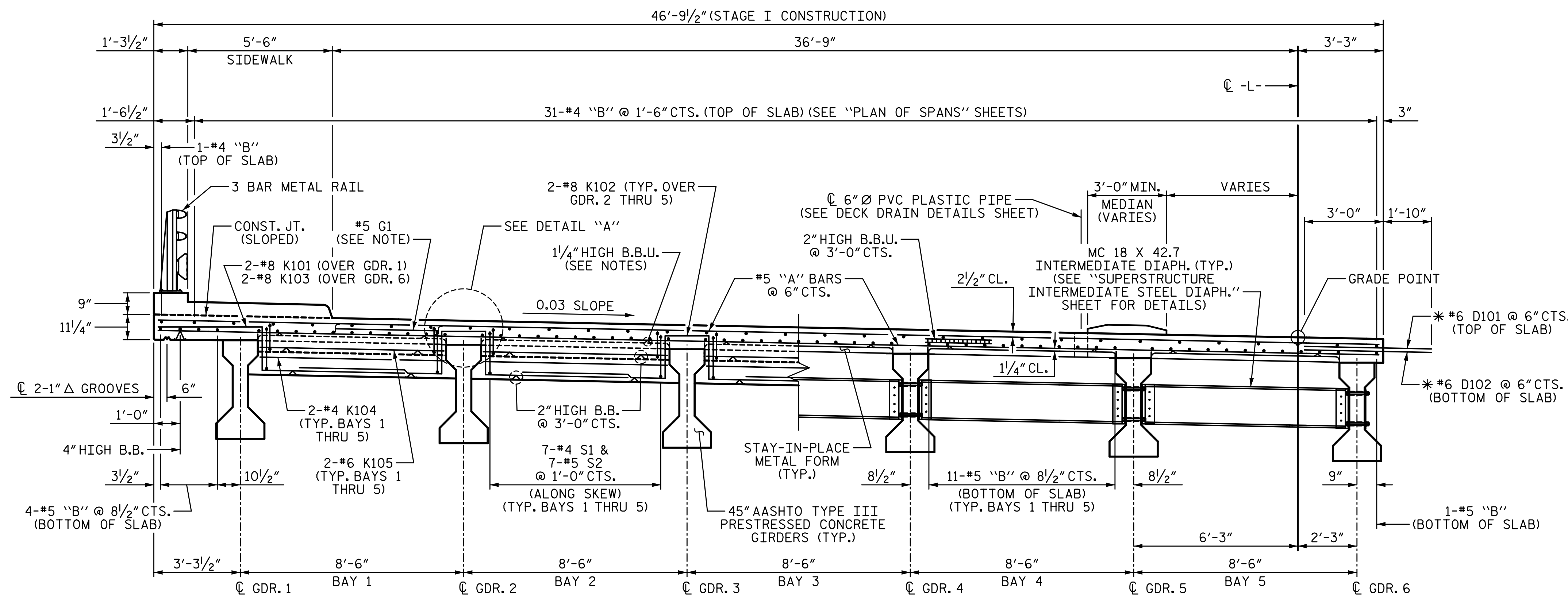


4/6/2023 12:01:46 PM P:\Raleigh\Projects\2018\Division 9 (Mott MacDonald)\U-2729\Structures\Drawings\Final\U2729\_SMU\_TS\_330290.dgn



**PARTIAL TYPICAL SECTION**  
(SHOWING END BENT DIAPHRAGM)

**PARTIAL TYPICAL SECTION**  
(SHOWING INTERMEDIATE DIAPHRAGM)

**NOTES:**

PROVIDE 1/4" HIGH BEAM BOLSTERS UPPER AT 4'-0" CTS. ATOP THE STAY-IN-PLACE METAL FORMS TO SUPPORT THE BOTTOM MAT OF "A" BARS. WHEN USING REMOVABLE FORMS, PROVIDE CONTINUOUS HIGH CHAIRS FOR METAL DECK (C.H.C.M.) @ 4'-0" CTS. WITH A HEIGHT TO SUPPORT THE BOTTOM MAT OF "A" BARS A CLEAR DISTANCE OF 2 1/2" ABOVE THE TOP OF THE REMOVABLE FORM.

LONGITUDINAL STEEL MAY BE SHIFTED SLIGHTLY, AS NECESSARY, TO AVOID INTERFERENCE WITH STIRRUPS IN PRESTRESSED CONCRETE GIRDERS.

CONCRETE SIDEWALK IN CONTINUOUS UNIT SHALL NOT BE CAST UNTIL ALL SLAB CONCRETE IN THAT UNIT HAS BEEN CAST AND HAS REACHED A MINIMUM COMPRESSIVE STRENGTH OF 3,000 PSI.

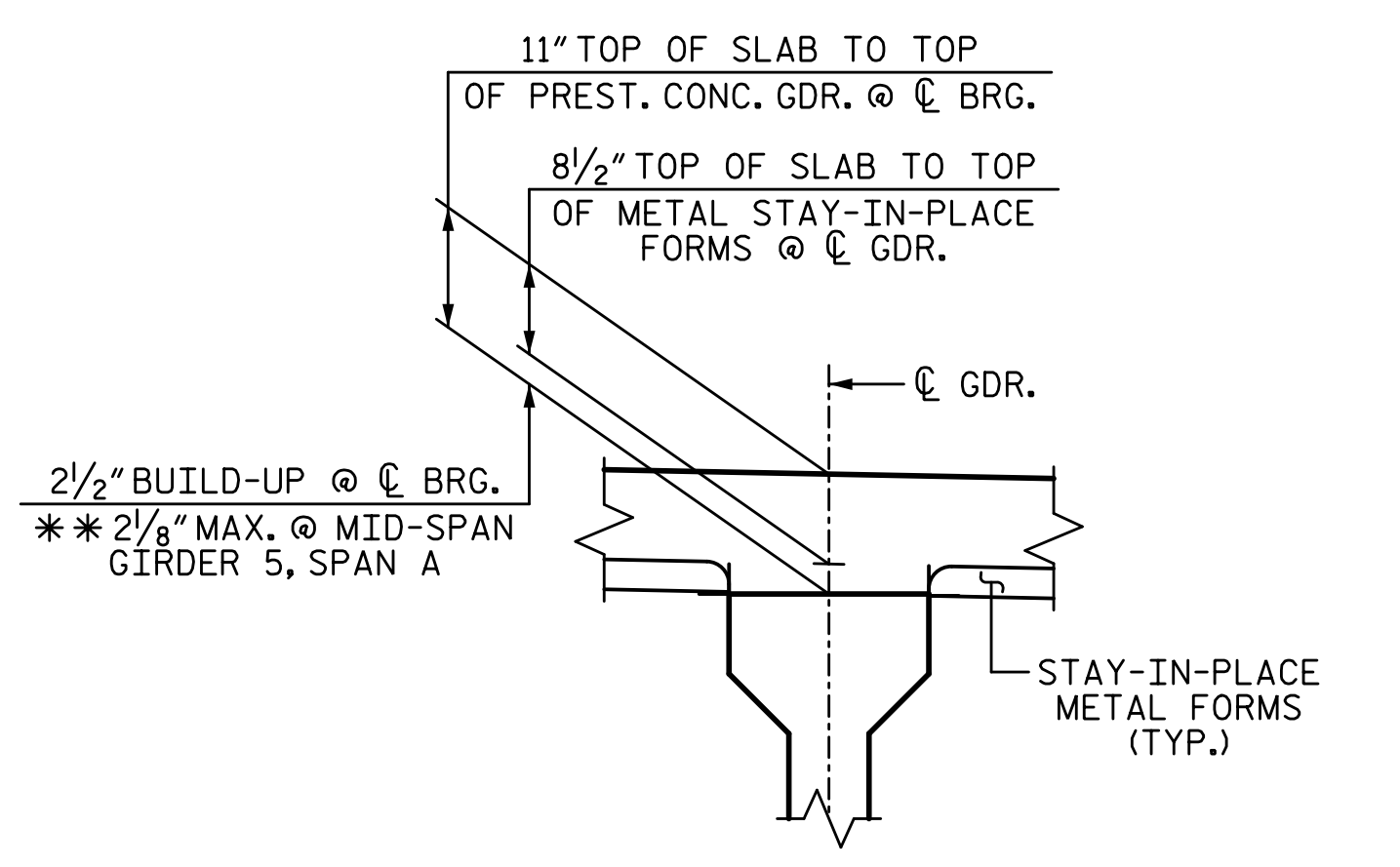
PREVIOUSLY CAST CONCRETE IN A CONTINUOUS UNIT SHALL HAVE ATTAINED A MINIMUM COMPRESSIVE STRENGTH OF 3,000 PSI BEFORE ADDITIONAL CONCRETE IS CAST IN THE UNIT.

\*#6 D101 & D201 DOWELS SHALL BE PLACED IN THE SAME HORIZONTAL PLANE AS THE TOP REINFORCING STEEL. #6 D102 & D202 DOWELS SHALL BE PLACED IN THE SAME HORIZONTAL PLANE AS THE BOTTOM REINFORCING STEEL.

#5 "G" BAR MAY BE SHIFTED SLIGHTLY, AS NECESSARY, TO CLEAR REINFORCING STEEL AND STIRRUPS.

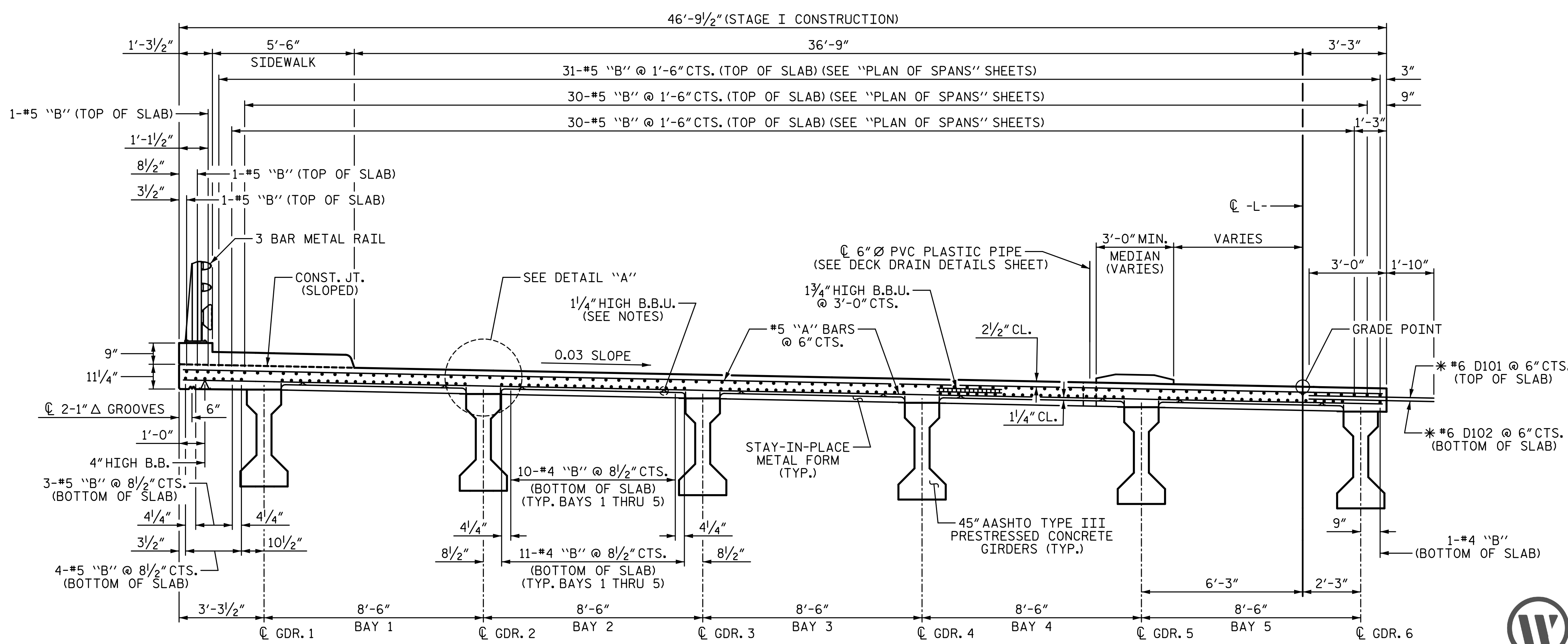
3'-0" MIN. MEDIAN SHALL BE POURED AFTER STAGE II IS COMPLETE, SEE CONSTRUCTION SEQUENCE SHEET.

DECK STEEL MAY BE SHIFTED SLIGHTLY TO CLEAR DECK DRAINS.



**DETAIL "A"**  
(TYP. EA. GDR.)

(\*\* BASED ON PREDICTED FINAL CAMBER AND THEORETICAL GRADE LINE ELEVATIONS)



**PARTIAL TYPICAL SECTION**  
(SHOWING LINK SLAB REGION INTERIOR BENT)

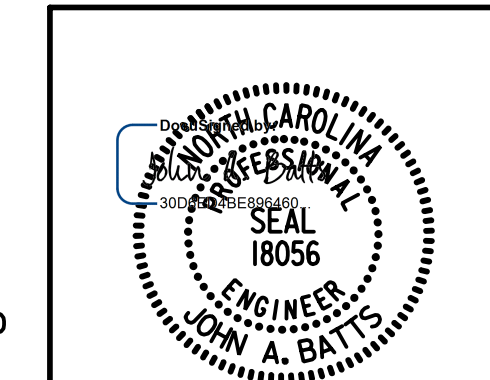
PROJECT NO. U-2729  
FORSYTH COUNTY  
 STATION: 33+99.11 -L-

SHEET 1 OF 3

STATE OF NORTH CAROLINA  
 DEPARTMENT OF TRANSPORTATION  
 RALEIGH  
 SUPERSTRUCTURE

**TYPICAL SECTION**

STAGE I



**W WGI**  
 5640 Dillard Drive, Suite 200  
 Cary, NC 27518  
 LICENSURE NO. C-4434

DRAWN BY: T. BANKOVICH	DATE: 9-22
CHECKED BY: T.J. BEACH	DATE: 9-22
DESIGN ENGINEER OF RECORD: J.A. BATTS	DATE: 9-22

REVISIONS				SHEET NO.	
NO.	BY:	DATE:	NO.	DATE:	S-6
1			3		TOTAL SHEETS
2			4		59

**DOCUMENT NOT CONSIDERED FINAL  
 UNLESS ALL SIGNATURES COMPLETED**