


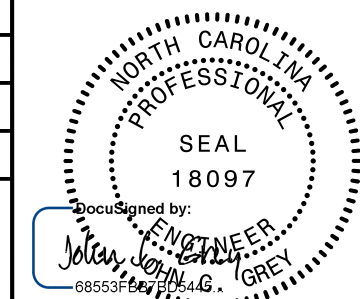
5/14/99

NOTE:
THE ESTIMATED QUANTITY OF DUCTILE IRON WATER PIPE FITTINGS ON THIS PLAN SHEET IS 2,370 POUNDS. THE ACTUAL QUANTITY AND TYPE OF FITTINGS MAY VARY BASED ON FIELD CONDITIONS.

PREPARED IN THE OFFICE OF:



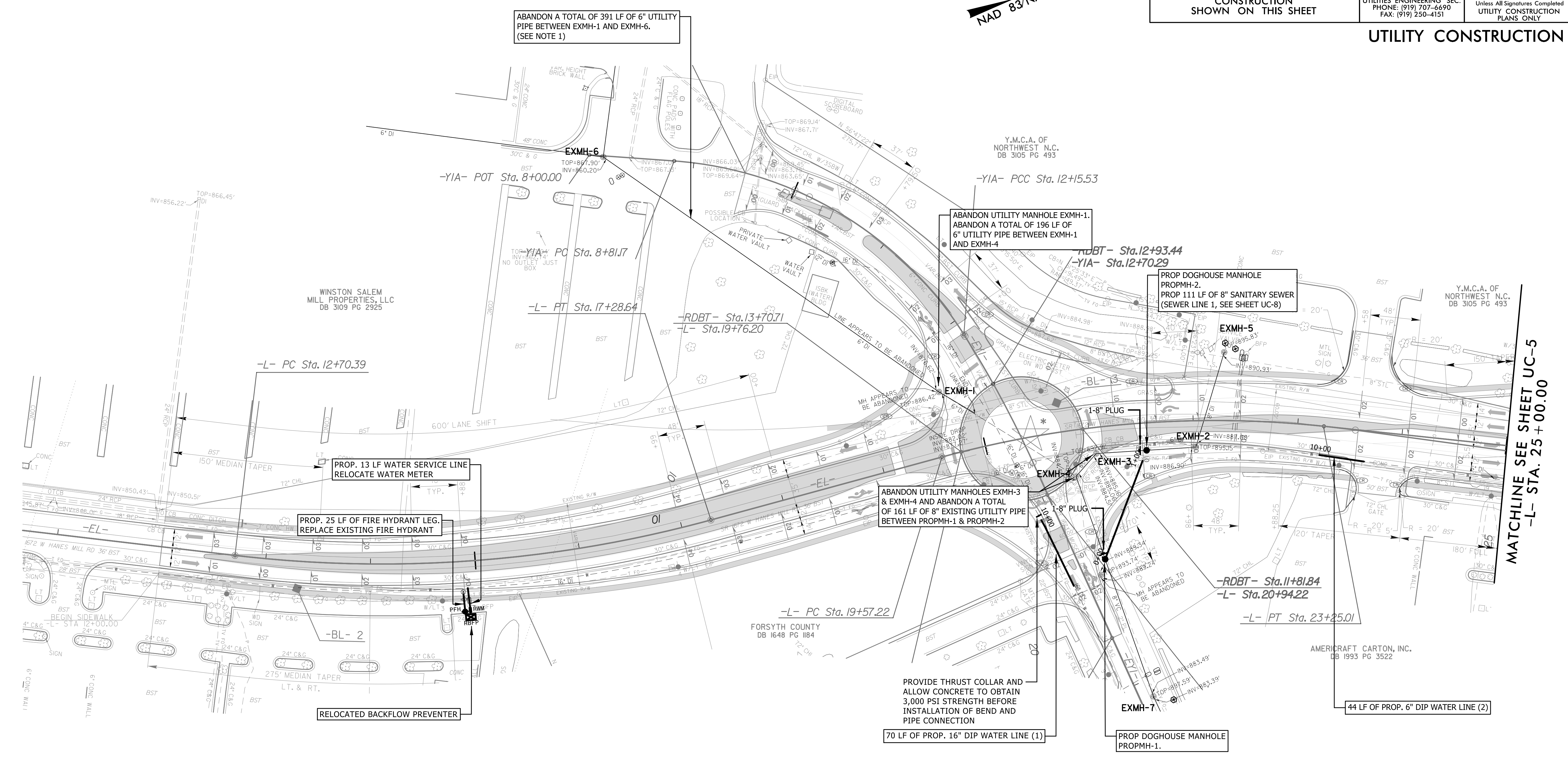
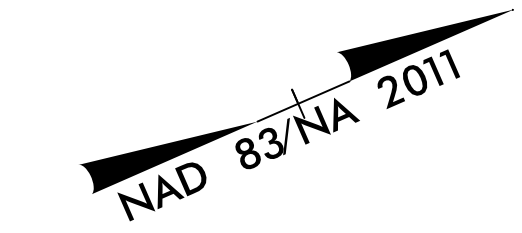
300 S. Main Street • Winston-Salem, NC 27101
(863) 722-5328 • thewootencompany.com
License Number: F-0115

PROJECT REFERENCE NO.	U-2729	SHEET NO.	UC-4
DESIGNED BY:	JPM		
DRAWN BY:	BTH		
CHECKED BY:	JPM		
APPROVED BY:	JCG		
REVISED:	2/2022	NORTH CAROLINA DEPARTMENT OF TRANSPORTATION UTILITIES ENGINEERING SEC. PHONE: (919) 707-6690 FAX: (919) 250-4151	

VERTICAL SCALE: 1" = 5'
HORIZONTAL SCALE: 1" = 25'

WATER LINE AND SEWER LINE CONSTRUCTION SHOWN ON THIS SHEET

UTILITY CONSTRUCTION



- NOTES:**
- THE SANITARY SEWER LINE SHOWN IN PARCEL 2 IS A PRIVATE LINE. CONFIRM WITH OWNER THAT IT IS NO LONGER IN USE PRIOR TO ABANDONMENT.

SEE SHEET UC-7 FOR WATER PROFILE
SEE SHEET UC-8 FOR SEWER PROFILE

EXISTING SEWER MANHOLE INFORMATION			PROPOSED SEWER MANHOLE INFORMATION
EXMH-1 C/L INV:876.62 RIM:886.42	EXMH-3 INV IN:884.51 INV OUT:884.41 RIM:892.11	EXMH-5 C/L INV:890.93 RIM:895.83	PROPMH-1 C/L INV:884.06 RIM:895.00
EXMH-2 INV IN:887.00 INV OUT:886.90 PROP INV OUT:886.90 RIM:895.15	EXMH-4 INV IN:885.16 INV OUT:885.06 RIM:892.91	EXMH-6 INV OUT:860.20 RIM:867.90	PROPMH-2 C/L INV:886.09 RIM:896.17
		EXMH-7 INV IN:883.49 INV OUT:883.39 RIM:897.59	

MATCHLINE SEE SHEET UC-5
-L- STA. 25 + 00.00